

Existing Acreage: 1,049.145
 Proposed Acreage: 1,052.5729

Legend:	
---	Existing District Boundary
—	Proposed Tracts to be Annexed by the District

VICINITY MAP

1" = 2000'

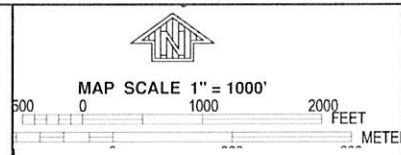
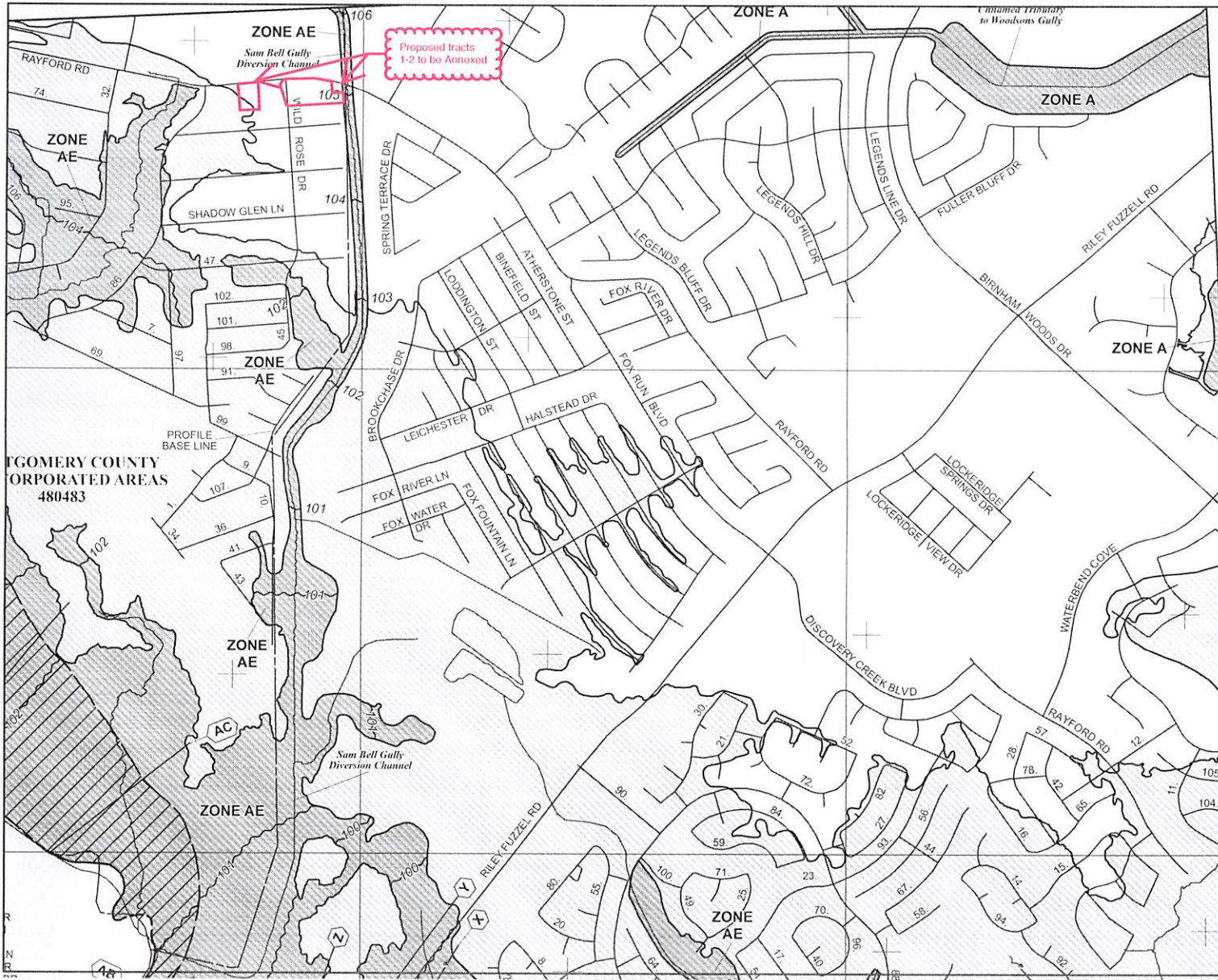
MAP REF: KEY MAP[®] 293 A,B,E,F



A&S Engineers, Inc.

10377 Stella Link Road
 Houston, TX 77025
 713 / 942 / 2700

Texas Engineering Registration No. F-000802




NFIP PANEL 0685G

FIRM
 FLOOD INSURANCE RATE MAP
 MONTGOMERY COUNTY,
 TEXAS
 AND INCORPORATED AREAS

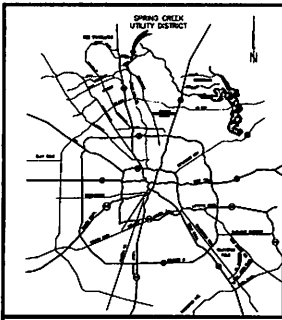
PANEL 685 OF 750
 (SEE MAP INDEX FOR FIRM PANEL LAYOUT)

CONTAINS:
 COMMUNITY NUMBER PANEL SUB-H
 MONTGOMERY COUNTY 480483 0085 G

Notice to User: The Map Number shown below should be used when placing map orders; the Community Number shown above should be used on insurance applications for the subject community.

 **MAP NUMBER**
 48339C0685G
MAP REVISED
 AUGUST 18, 2014
 Federal Emergency Management Agency

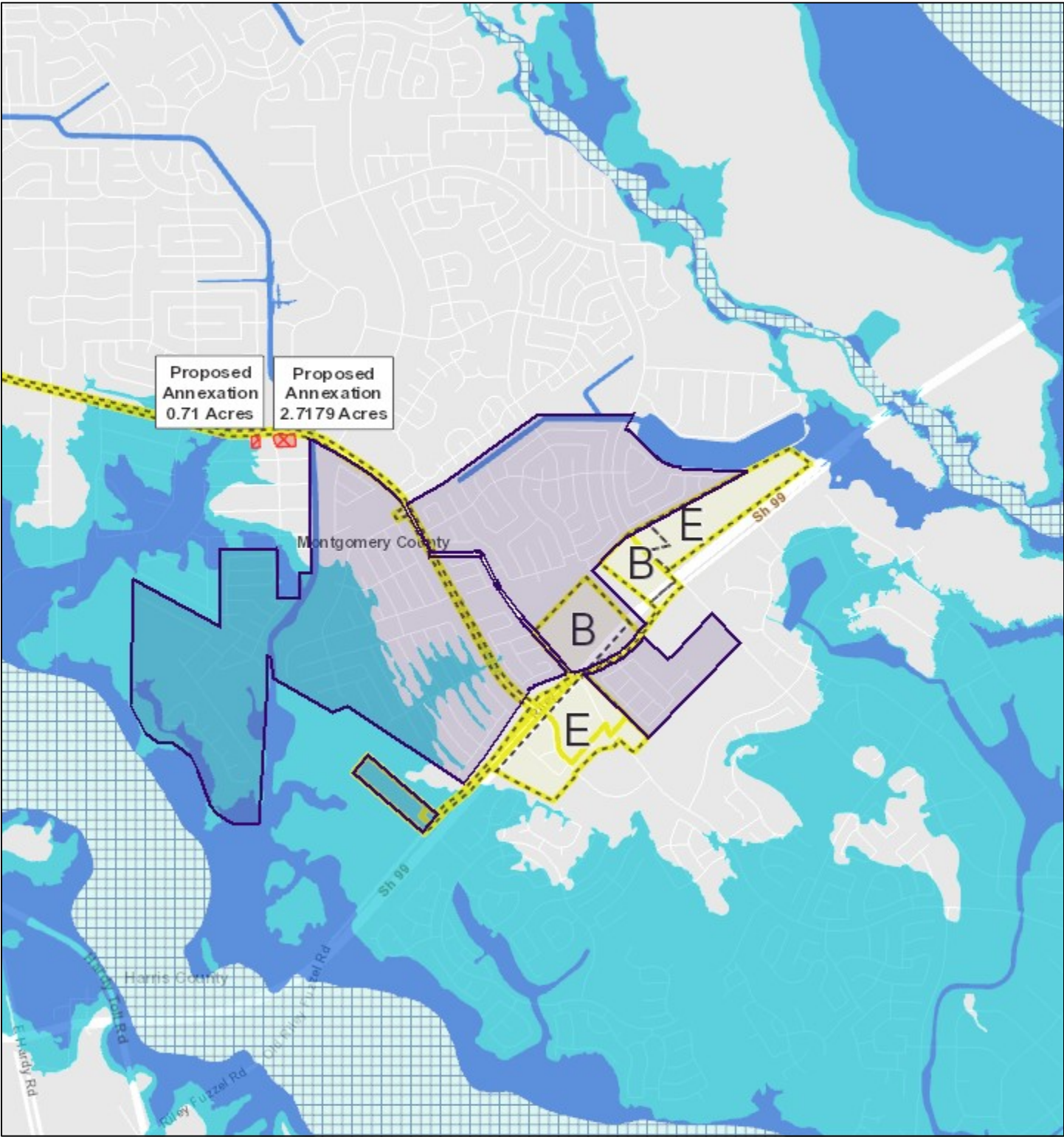
This is an official copy of a portion of the above referenced flood map. It was extracted using F-MIT On-Line. This map does not reflect changes or amendments which may have been made subsequent to the date on the title block. For the latest product information about National Flood Insurance Program flood maps check the FEMA Flood Map Store at www.msc.fema.gov



Curve No.	Ch Length	Radius	Delta	Ch Bearing	Ch Length
C1	75.27	17142	147°59'37"	S 14°26'21" W	151.27
C2	101.22	12914	87°52'37"	S 24°34'42" E	161.88
C3	202.15	12914	47°50'30"	S 47°34'41" E	262.13
C4	304.46	10122	10°45'44"	S 70°34'41" W	439.36
C5	388.52	10122	27°32'51"	S 47°32'32" W	586.98
C6	51.30	688.89	87°27'27"	S 47°34'41" E	117.32
C7	101.22	12914	17°52'30"	S 72°34'41" E	161.88
C8	161.88	12914	37°52'30"	S 47°32'32" W	262.13
C9	262.13	12914	57°52'30"	S 24°34'42" E	463.26
C10	362.38	12914	77°52'30"	S 0°34'42" E	664.40
C11	462.63	12914	97°52'30"	S 14°34'42" E	865.53
C12	562.88	12914	117°52'30"	S 24°34'42" E	1066.66
C13	663.13	12914	137°52'30"	S 34°34'42" E	1267.79
C14	763.38	12914	157°52'30"	S 44°34'42" E	1468.92
C15	863.63	12914	177°52'30"	S 54°34'42" E	1670.05
C16	963.88	12914	197°52'30"	S 64°34'42" E	1871.18
C17	1064.13	12914	217°52'30"	S 74°34'42" E	2072.31
C18	1164.38	12914	237°52'30"	S 84°34'42" E	2273.44
C19	1264.63	12914	257°52'30"	S 94°34'42" E	2474.57
C20	1364.88	12914	277°52'30"	S 104°34'42" E	2675.70
C21	1465.13	12914	297°52'30"	S 114°34'42" E	2876.83
C22	1565.38	12914	317°52'30"	S 124°34'42" E	3077.96
C23	1665.63	12914	337°52'30"	S 134°34'42" E	3279.09
C24	1765.88	12914	357°52'30"	S 144°34'42" E	3480.22
C25	1866.13	12914	377°52'30"	S 154°34'42" E	3681.35
C26	1966.38	12914	397°52'30"	S 164°34'42" E	3882.48
C27	2066.63	12914	417°52'30"	S 174°34'42" E	4083.61
C28	2166.88	12914	437°52'30"	S 184°34'42" E	4284.74
C29	2267.13	12914	457°52'30"	S 194°34'42" E	4485.87
C30	2367.38	12914	477°52'30"	S 204°34'42" E	4687.00
C31	2467.63	12914	497°52'30"	S 214°34'42" E	4888.13
C32	2567.88	12914	517°52'30"	S 224°34'42" E	5089.26
C33	2668.13	12914	537°52'30"	S 234°34'42" E	5290.39
C34	2768.38	12914	557°52'30"	S 244°34'42" E	5491.52
C35	2868.63	12914	577°52'30"	S 254°34'42" E	5692.65
C36	2968.88	12914	597°52'30"	S 264°34'42" E	5893.78
C37	3069.13	12914	617°52'30"	S 274°34'42" E	6094.91
C38	3169.38	12914	637°52'30"	S 284°34'42" E	6296.04
C39	3269.63	12914	657°52'30"	S 294°34'42" E	6497.17
C40	3369.88	12914	677°52'30"	S 304°34'42" E	6698.30
C41	3470.13	12914	697°52'30"	S 314°34'42" E	6899.43
C42	3570.38	12914	717°52'30"	S 324°34'42" E	7100.56
C43	3670.63	12914	737°52'30"	S 334°34'42" E	7301.69
C44	3770.88	12914	757°52'30"	S 344°34'42" E	7502.82
C45	3871.13	12914	777°52'30"	S 354°34'42" E	7703.95
C46	3971.38	12914	797°52'30"	S 364°34'42" E	7905.08
C47	4071.63	12914	817°52'30"	S 374°34'42" E	8106.21
C48	4171.88	12914	837°52'30"	S 384°34'42" E	8307.34
C49	4272.13	12914	857°52'30"	S 394°34'42" E	8508.47
C50	4372.38	12914	877°52'30"	S 404°34'42" E	8709.60
C51	4472.63	12914	897°52'30"	S 414°34'42" E	8910.73
C52	4572.88	12914	917°52'30"	S 424°34'42" E	9111.86
C53	4673.13	12914	937°52'30"	S 434°34'42" E	9312.99
C54	4773.38	12914	957°52'30"	S 444°34'42" E	9514.12
C55	4873.63	12914	977°52'30"	S 454°34'42" E	9715.25
C56	4973.88	12914	997°52'30"	S 464°34'42" E	9916.38
C57	5074.13	12914	1017°52'30"	S 474°34'42" E	10117.51
C58	5174.38	12914	1037°52'30"	S 484°34'42" E	10318.64
C59	5274.63	12914	1057°52'30"	S 494°34'42" E	10519.77
C60	5374.88	12914	1077°52'30"	S 504°34'42" E	10720.90
C61	5475.13	12914	1097°52'30"	S 514°34'42" E	10922.03
C62	5575.38	12914	1117°52'30"	S 524°34'42" E	11123.16
C63	5675.63	12914	1137°52'30"	S 534°34'42" E	11324.29
C64	5775.88	12914	1157°52'30"	S 544°34'42" E	11525.42
C65	5876.13	12914	1177°52'30"	S 554°34'42" E	11726.55
C66	5976.38	12914	1197°52'30"	S 564°34'42" E	11927.68
C67	6076.63	12914	1217°52'30"	S 574°34'42" E	12128.81
C68	6176.88	12914	1237°52'30"	S 584°34'42" E	12329.94
C69	6277.13	12914	1257°52'30"	S 594°34'42" E	12531.07
C70	6377.38	12914	1277°52'30"	S 604°34'42" E	12732.20
C71	6477.63	12914	1297°52'30"	S 614°34'42" E	12933.33
C72	6577.88	12914	1317°52'30"	S 624°34'42" E	13134.46
C73	6678.13	12914	1337°52'30"	S 634°34'42" E	13335.59
C74	6778.38	12914	1357°52'30"	S 644°34'42" E	13536.72
C75	6878.63	12914	1377°52'30"	S 654°34'42" E	13737.85
C76	6978.88	12914	1397°52'30"	S 664°34'42" E	13938.98
C77	7079.13	12914	1417°52'30"	S 674°34'42" E	14140.11
C78	7179.38	12914	1437°52'30"	S 684°34'42" E	14341.24
C79	7279.63	12914	1457°52'30"	S 694°34'42" E	14542.37
C80	7379.88	12914	1477°52'30"	S 704°34'42" E	14743.50
C81	7480.13	12914	1497°52'30"	S 714°34'42" E	14944.63
C82	7580.38	12914	1517°52'30"	S 724°34'42" E	15145.76
C83	7680.63	12914	1537°52'30"	S 734°34'42" E	15346.89
C84	7780.88	12914	1557°52'30"	S 744°34'42" E	15548.02
C85	7881.13	12914	1577°52'30"	S 754°34'42" E	15749.15
C86	7981.38	12914	1597°52'30"	S 764°34'42" E	15950.28
C87	8081.63	12914	1617°52'30"	S 774°34'42" E	16151.41
C88	8181.88	12914	1637°52'30"	S 784°34'42" E	16352.54
C89	8282.13	12914	1657°52'30"	S 794°34'42" E	16553.67
C90	8382.38	12914	1677°52'30"	S 804°34'42" E	16754.80
C91	8482.63	12914	1697°52'30"	S 814°34'42" E	16955.93
C92	8582.88	12914	1717°52'30"	S 824°34'42" E	17157.06
C93	8683.13	12914	1737°52'30"	S 834°34'42" E	17358.19
C94	8783.38	12914	1757°52'30"	S 844°34'42" E	17559.32
C95	8883.63	12914	1777°52'30"	S 854°34'42" E	17760.45
C96	8983.88	12914	1797°52'30"	S 864°34'42" E	17961.58
C97	9084.13	12914	1817°52'30"	S 874°34'42" E	18162.71
C98	9184.38	12914	1837°52'30"	S 884°34'42" E	18363.84
C99	9284.63	12914	1857°52'30"	S 894°34'42" E	18564.97
C100	9384.88	12914	1877°52'30"	S 904°34'42" E	18766.10

Curve No.	Ch Length	Radius	Delta	Ch Bearing	Ch Length
C1	75.27	17142	147°59'37"	S 14°26'21" W	151.27
C2	101.22	12914	87°52'37"	S 24°34'42" E	161.88
C3	202.15	12914	47°50'30"	S 47°34'41" E	262.13
C4	304.46	10122	10°45'44"	S 70°34'41" W	439.36
C5	388.52	10122	27°32'51"	S 47°32'32" W	586.98
C6	51.30	688.89	87°27'27"	S 47°34'41" E	117.32
C7	101.22	12914	17°52'30"	S 72°34'41" E	161.88
C8	161.88	12914	37°52'30"	S 47°32'32" W	262.13
C9	262.13	12914	57°52'30"	S 24°34'42" E	463.26
C10	362.38	12914	77°52'30"	S 0°34'42" E	664.40
C11	462.63	12914	97°52'30"	S 14°34'42" E	865.53
C12	562.88	12914	117°52'30"	S 24°34'42" E	1066.66
C13	663.13	12914	137°52'30"	S 34°34'42" E	1267.79
C14	763.38	12914	157°52'30"	S 44°34'42" E	1468.92
C15	863.63	12914	177°52'30"	S 54°34'42" E	1670.05
C16	963.88	12914	197°52'30"	S 64°34'42" E	1871.18
C17	1064.13	12914	217°52'30"	S 74°34'42" E	2072.31
C18	1164.38	12914	237°52'30"	S 84°34'42" E	2273.44
C19	1264.63	12914	257°52'30"	S 94°34'42" E	2474.57
C20	1364.88	12914	277°52'30"	S 104°34'42" E	2675.70
C21	1465.13	12914	297°52'30"	S 114°34'42" E	2876.83
C22	1565.38	12914	317°52'30"	S 124°34'42" E	3077.96
C23	1665.63	12914	337°52'30"	S 134°34'42" E	3279.09
C24	1765.88	12914	357°52'30"	S 144°34'42" E	3480.22
C25	1866.13	12914	377°52'30"	S 154°34'42" E	3681.35
C26	1966.38	12914	397°52'30"	S 164°34'42" E	3882.48
C27	2066.63	12914	417°52'30"	S 174°34'42" E	4083.61
C28	2166.88	12914	437°52'30"	S 184°34'42" E	4284.74
C29	2267.13	12914	457°52'30"	S 194°34'42" E	4485.87
C30	2367.38	12914	477°52'30"	S 204°34'42" E	4687.00
C31	2467.63	12914	497°52'30"	S 214°34'42" E	4888.13
C32	2567.88	12914	517°52'30"	S 224°34'42" E	5089.26
C33	2668.13	12914	537°52'30"	S 234°34'42" E	5290.39
C34	2768.38	12914	557°52'30"	S 244°34'42" E	5491.52
C35	2868.63	12914	577°52'30"	S 254°34'42" E	5692.65
C36	2968.88	12914	597°52'30"	S 264°34'42" E	5893.78
C37	3069.13	12914	617°52'30"	S 274°34'42" E	6094.91
C38	3169.38	12914	637°52'30"	S 284°34'42" E	6296.04
C39	3269.63	12914	657°52'30"	S 294°34'42" E	6497.17
C40	3369.88	12914	677°52'30"	S 304°34'42" E	6698.30
C41	3470.13	12914	697°52'30"	S 314°34'42" E	6899.43
C42	3570.38	12914	717°52'30"	S 324°34'42" E	7100.56
C43	3670.63	12914	737°52'30"	S 334°34'42" E	7301.69
C44	3770.88	12914	757°52'30"	S 344°34'42" E	7502.82
C45	3871.13	12914	777°52'30"	S 354°34'42" E	7703.95
C46	3971.38	12914	797°52'30"	S 364°34'42" E	7905.08
C47	4071.63	12914	817°52'30"	S 374°34'42" E	8106.21
C48	4171.88	12914	837°52'30"	S 384°34'42" E	8307.34
C49	4272.13	12914	857°52'30"	S 394°34'42" E	8508.47
C50	4372.38	12914	877°52'30"	S 404°34'42" E	8709.60
C51	4472.63	12914	897°52'30"	S 414°34'42" E	8910.73
C52	4572.88	12914	917°52'30"	S 424°34'42" E	9111.86
C53	4673.13	12914	937°52'30"	S 434°34'42" E	9312.99
C54	4773.38	12914	957°52'30"	S 444°34'42" E	9514.12
C55	4873.63	12914	977°52'30"	S 454°34'42" E	9715.25
C56	4973.88	12914	997°52'30"	S 464°34'42" E	9916.38
C57	5074.13	12914	1017°52'30"	S 474°34'42" E	10117.51
C58	5174.38	12914	1037°52'30"	S 484°34'42" E	10318.64

Spring Creek UD (3.4279acres)



9/23/2019

- Existing Acreage of District
- 500 Year Floodplain
- Proposed Annexation
- Floodway
- Council Districts
- City Limits

- Flood Hazard Zones**
- 100 Year Floodplain

