

The hydraulic analysis of Turkey Creek was conducted to support Turkey Creek Drainage Gate Rehabilitation project at IAH. The rehabilitation project aims to replace the existing trash rack with a proposed sluiced gate type trash rack for 4 -8' x 8' box culverts along Turkey Creek under the service road. The project location map is included in Figure 1. The preliminary design of the proposed sluice gate is included in attachment 1.

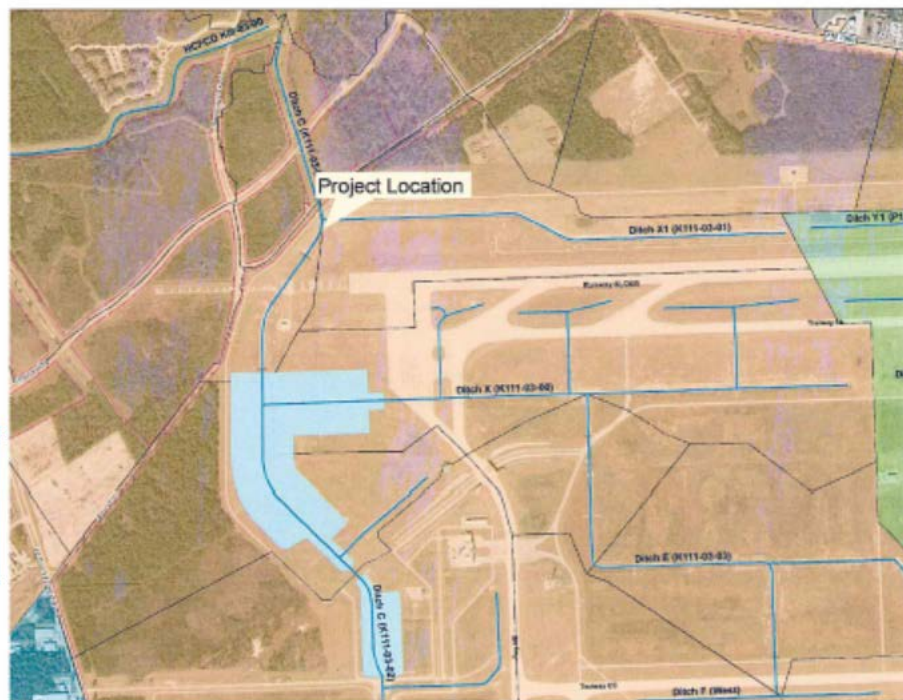


Figure 1 - Location Map