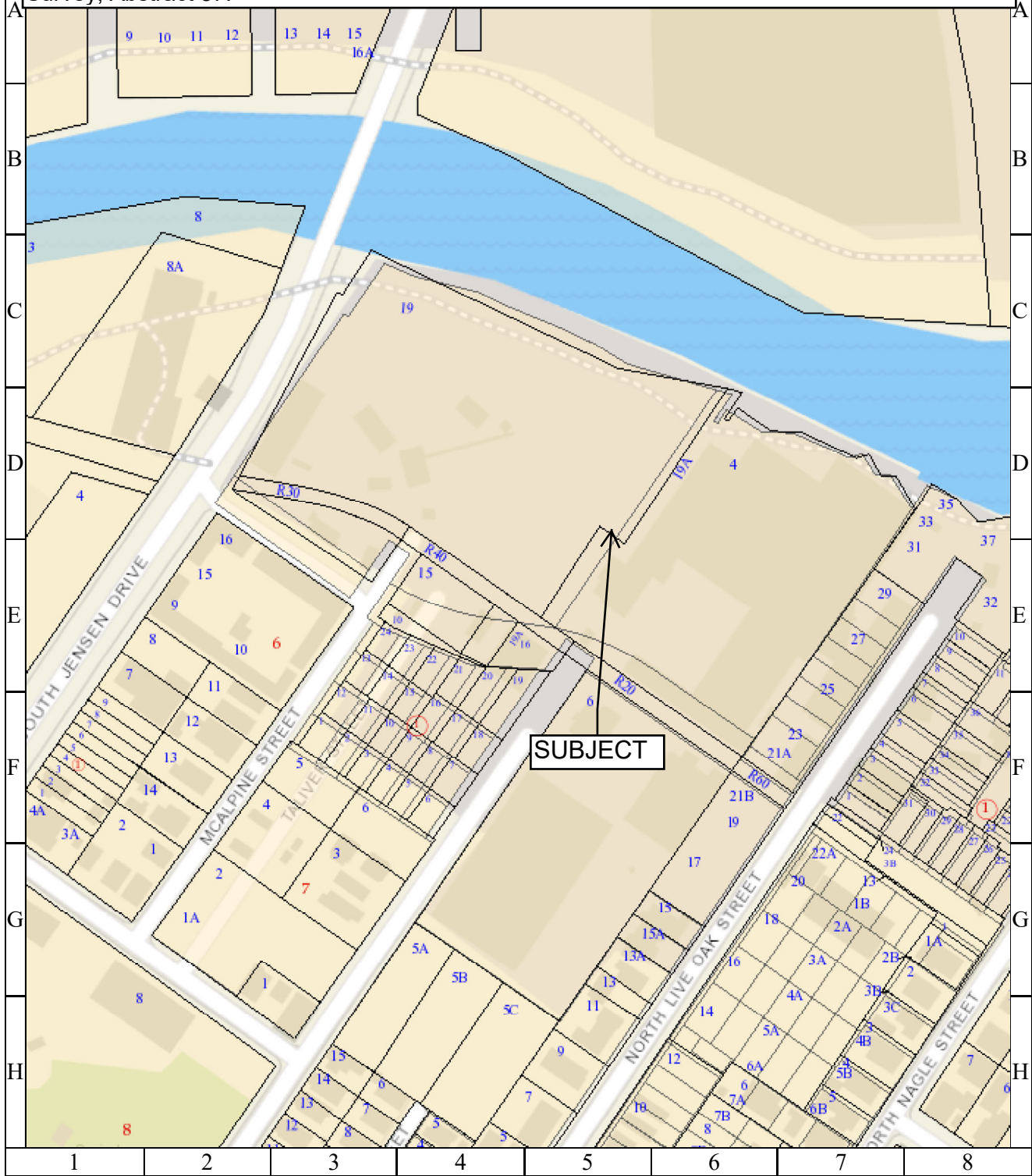


**Parcel Map - Parcel SY17-038A through SY17-038E, SY17-066A, SY17-066B, SY17-067, LY16-009, LY16-007, LY17-036, and LY17-037**

Abandonment and sale of: 1) a 6 foot-wide storm sewer easement; 2) three variable-width storm sewer easements; and 3) a 10 foot-wide prescriptive storm sewer easement, in exchange for conveyance to the City of a 20 foot-wide storm sewer easement, located out of the S. M. Williams Survey, Abstract 87.



1 inch = 56 feet

**CITY OF HOUSTON**  
 Department of Public Works and Engineering  
 Geographic Information & Management System (GIMS)



DISCLAIMER: THIS MAP REPRESENTS THE BEST INFORMATION AVAILABLE TO THE CITY.  
 THE CITY DOES NOT WARRANT ITS ACCURACY OR COMPLETENESS.