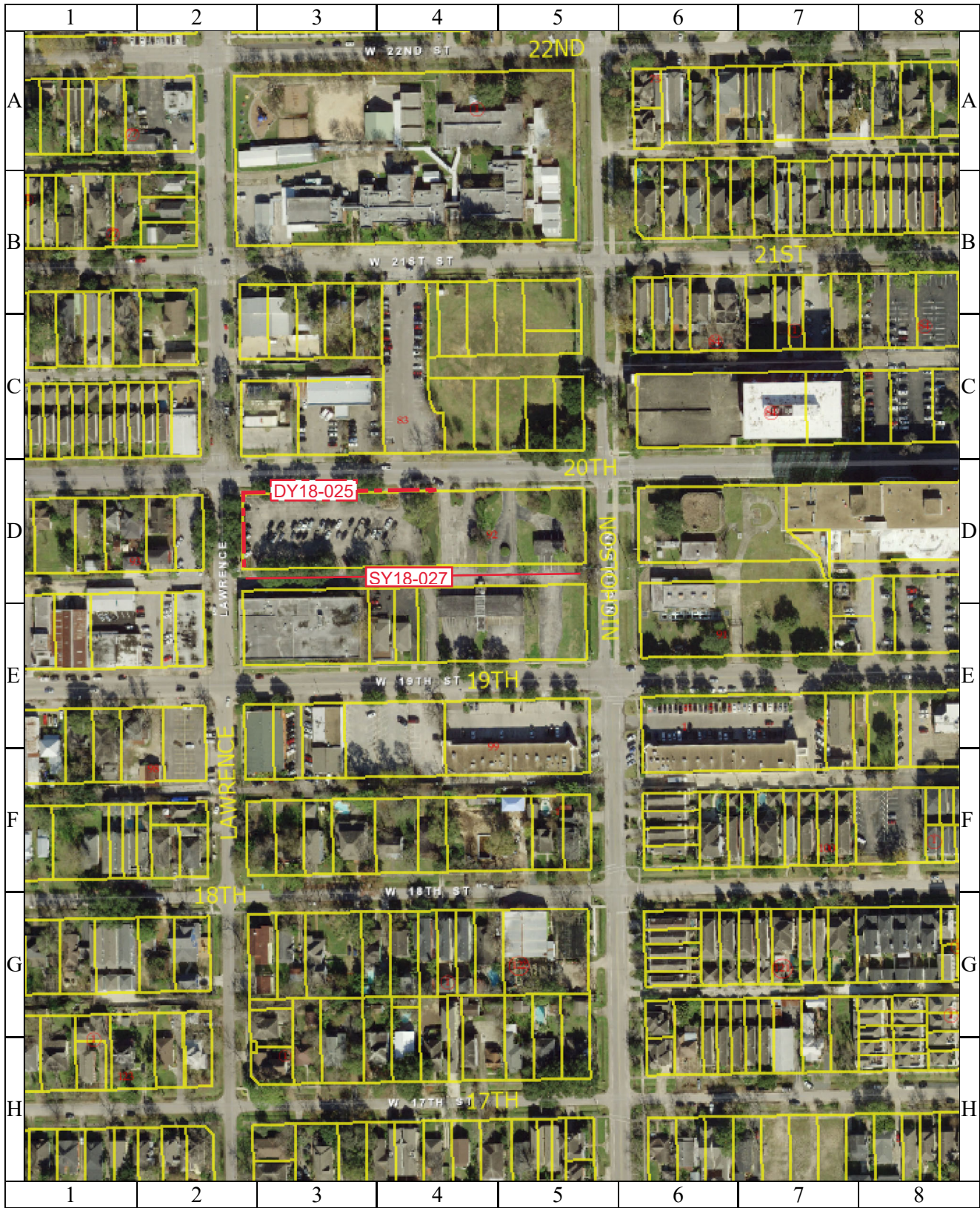


# Parcel Map/Aerial Map - Parcels SY18-027 and DY18-025

Abandonment and sale of a variable width utility easement, from Lawrence Street to Nicholson Street, in exchange for conveyance to the City of a 15-foot wide sanitary sewer easement, all located within Block 92, of the Houston Heights Addition, out of the John Austin Survey, A-1.



1 inch = 79 feet

**CITY OF HOUSTON**  
 Department of Public Works and Engineering  
 Geographic Information & Management System (GIMS)

DISCLAIMER: THIS MAP REPRESENTS THE BEST INFORMATION AVAILABLE TO THE CITY.  
 THE CITY DOES NOT WARRANT ITS ACCURACY OR COMPLETENESS.

