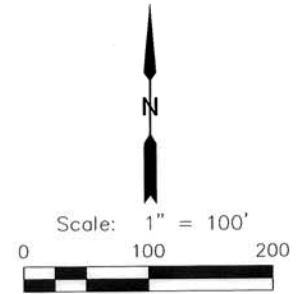


## Survey of Parcels SY18-045A and SY18-045B

Sale and conveyance of a 20 foot-wide water line easement and a 25 foot-wide sanitary sewer line easement, located out of the 130 foot-wide fee strip to the City of Houston West Canal, situated in the Talcott Patching Survey, Abstract No. 619.

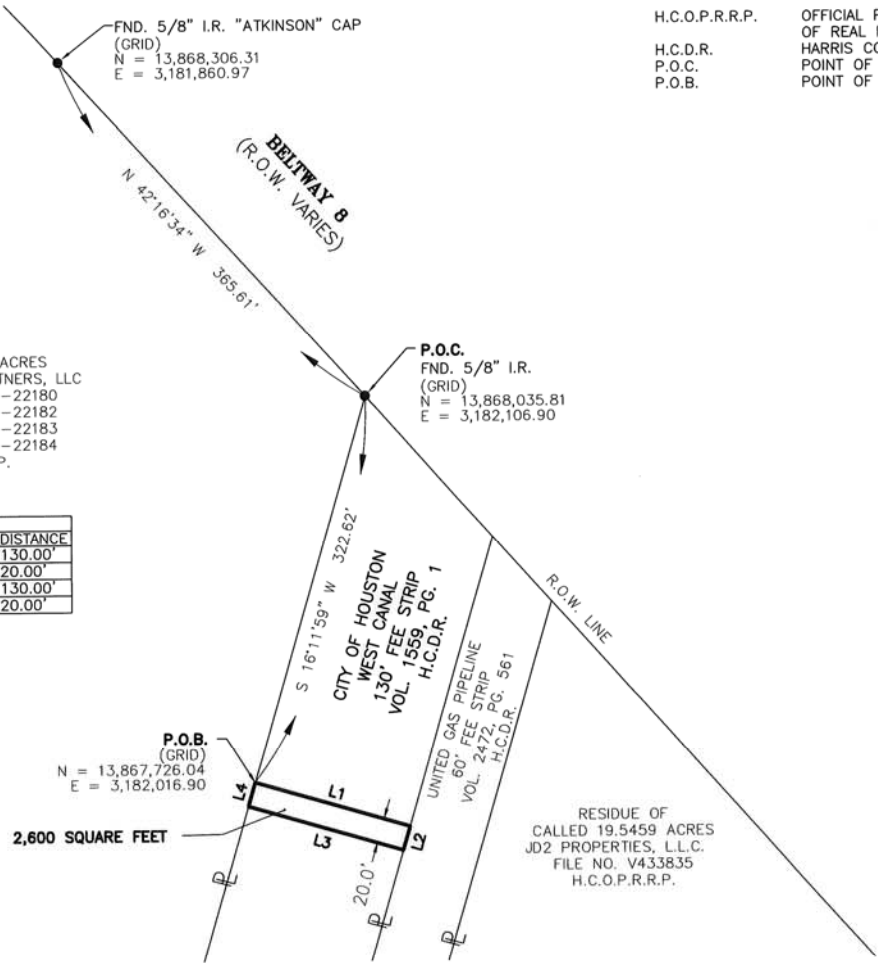
**LEGEND**

H.C.O.P.R.R.P. OFFICIAL PUBLIC RECORDS  
OF REAL PROPERTY OF HARRIS COUNTY  
H.C.D.R. HARRIS COUNTY DEED RECORDS  
P.O.C. POINT OF COMMENCEMENT  
P.O.B. POINT OF BEGINNING



CALLED 11.3915 ACRES  
UVALDE REALTY PARTNERS, LLC  
FILE NO. RP-2016-22180  
FILE NO. RP-2016-22182  
FILE NO. RP-2016-22183  
FILE NO. RP-2016-22184  
H.C.O.P.R.R.P.

LINE TABLE		
LINE	BEARING	DISTANCE
L1	S 73°54'26" E	130.00'
L2	S 16°11'59" W	20.00'
L3	N 73°54'26" W	130.00'
L4	N 16°11'59" E	20.00'



**EXHIBIT OF  
2,600 SQUARE FEET  
20' WATERLINE EASEMENT  
LOCATED IN THE  
TALCOTT PATCHING SURVEY, A-619  
CITY OF HOUSTON,  
HARRIS COUNTY, TEXAS**

**LJA Surveying, Inc.**  
2929 Briarpark Drive  
Suite 175  
Houston, Texas 77042  
Phone 713.953.5200  
Fax 713.953.5026  
T.B.P.L.S. Firm No. 10194382



**HOUSTON PUBLIC WORKS**

**APPROVAL**  
*[Signature]* DATE 8/6/18  
**SURVEY SECTION** *[Signature]* **RIGHT OF WAY SECTION**

KEY MAP No. 457L	GIMS MAP No. 5860B
PARCEL NO. <u>SY18-045A</u>	
JOB NO.	
WBS NO.	
ILMS NO.	

- NOTES:**
- 1) ALL BEARINGS REFERENCED TO THE TEXAS COORDINATE SYSTEM, CENTRAL ZONE, NAD 83, 2011 ADJUSTMENT
  - 2) ALL COORDINATES SHOWN HEREON ARE GRID COORDINATES. TO CONVERT GRID COORDINATES TO SURFACE COORDINATES APPLY THE COMBINED SCALE FACTOR OF 0.9999020545
  - 3) CORNER MONUMENTS NOT SET AT CLIENT'S REQUEST.
  - 4) THIS EXHIBIT IS ACCOMPANIED BY A SEPARATE LEGAL DESCRIPTION.

*[Signature]*  
CHARLES L. JURICA RPLS  
REGISTERED PROFESSIONAL LAND SURVEYOR  
TEXAS REGISTRATION NO. 6696  
LJA SURVEYING, INC.



I:\Projects\1808\SY18-045A\SY18-045A.dwg, 50 FT. TIE-IN, REVISED.dwg, 7/27/2018

CALLED 11.3915 ACRES  
 UVALDE REALTY PARTNERS, LLC  
 FILE NO. RP-2016-22180  
 FILE NO. RP-2016-22182  
 FILE NO. RP-2016-22183  
 FILE NO. RP-2016-22184  
 H.C.O.P.R.R.P.

FND. 5/8" I.R. "ATKINSON" CAP  
 (GRID)  
 N = 13,868,306.31  
 E = 3,181,860.97

LEGEND  
 H.C.O.P.R.R.P. OFFICIAL PUBLIC RECORDS  
 OF REAL PROPERTY OF HARRIS COUNTY  
 H.C.D.R. HARRIS COUNTY DEED RECORDS  
 P.O.C. POINT OF COMMENCEMENT  
 P.O.B. POINT OF BEGINNING

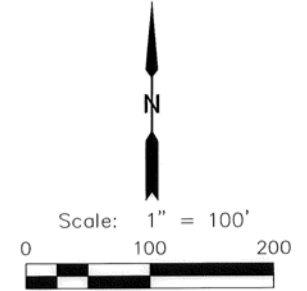


EXHIBIT OF  
 3,250 SQUARE FEET  
 25' SANITARY SEWER EASEMENT  
 LOCATED IN THE  
 TALCOTT PATCHING SURVEY, A-619  
 CITY OF HOUSTON,  
 HARRIS COUNTY, TEXAS

LINE TABLE		
LINE	BEARING	DISTANCE
L1	S 73°54'26" E	130.00'
L2	S 16°11'59" W	25.00'
L3	N 73°54'26" W	130.00'
L4	N 16°11'59" E	25.00'

P.O.B.  
 (GRID)  
 N = 13,867,706.83  
 E = 3,182,011.32

3,250 SQUARE FEET

BELTWAY B  
 (R.O.W. VARIES)

P.O.C.  
 FND. 5/8" I.R.  
 (GRID)  
 N = 13,868,035.81  
 E = 3,182,106.90

CITY OF HOUSTON  
 WEST CANAL  
 130' FEE STRIP  
 VOL. 1559, PG. 1  
 H.C.D.R.

UNITED GAS PIPELINE  
 60' FEE STRIP  
 VOL. 2472, PG. 561  
 H.C.D.R.


RESIDUE OF  
 CALLED 19.5459 ACRES  
 JD2 PROPERTIES, L.L.C.  
 FILE NO. V433835  
 H.C.O.P.R.R.P.

R.O.W. LINE

- NOTES:
- 1) ALL BEARINGS REFERENCED TO THE TEXAS COORDINATE SYSTEM, CENTRAL ZONE, NAD 83, 2011 ADJUSTMENT
  - 2) ALL COORDINATES SHOWN HEREON ARE GRID COORDINATES. TO CONVERT GRID COORDINATES TO SURFACE COORDINATES APPLY THE COMBINED SCALE FACTOR OF 0.9999020545
  - 3) CORNER MONUMENTS NOT SET AT CLIENT'S REQUEST.
  - 4) THIS EXHIBIT IS ACCOMPANIED BY A SEPARATE LEGAL DESCRIPTION.

*Charles L. Jurica*  
 CHARLES L. JURICA, RPLS  
 REGISTERED PROFESSIONAL LAND SURVEYOR  
 TEXAS REGISTRATION NO. 6696  
 LJA SURVEYING, INC.



LJA Surveying, Inc.   
 2929 Briarpark Drive Phone 713.953.5200  
 Suite 175 Fax 713.953.5026  
 Houston, Texas 77042 T.B.P.L.S. Firm No. 10194382



HOUSTON PUBLIC WORKS

APPROVAL

*RJV*

SURVEY SECTION

3/6/19  
 DATE *[Signature]*

RIGHT OF WAY SECTION

KEY MAP No. 457L

5118-045B

GIMS MAP No. 5860B

JOB NO.

WBS NO.

ILMS NO.



SUT2