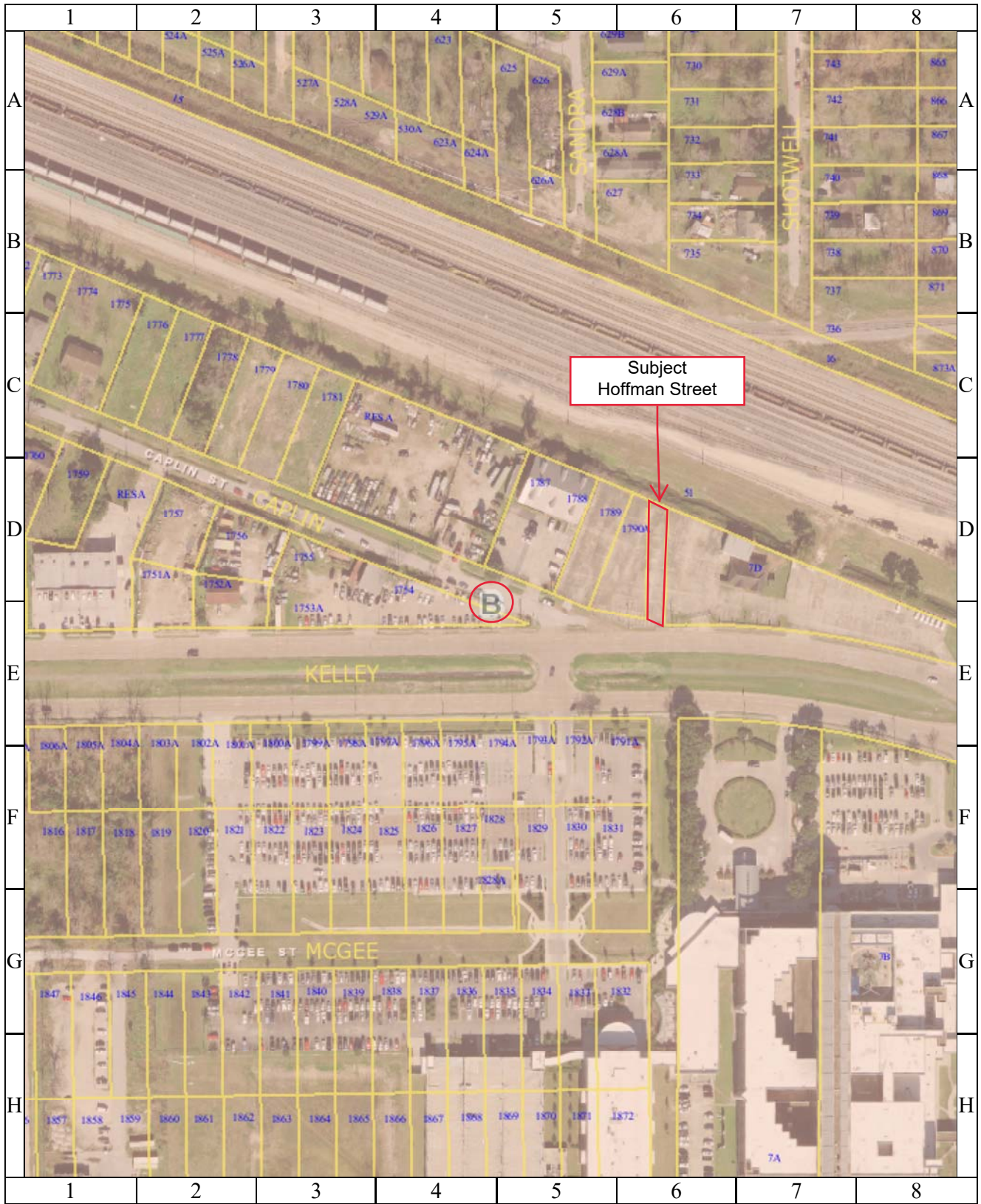


Council District Map - District B - Parcel SY18-061

Non-acceptance of Hoffman Street, from Kelley Street north to its terminus, located in the Kashmere Gardens Park Addition, out of the Harris and Wilson Two League Grant, A-32.



1 inch = 71 feet

CITY OF HOUSTON
Department of Public Works and Engineering
Geographic Information & Management System (GIMS)



DISCLAIMER: THIS MAP REPRESENTS THE BEST INFORMATION AVAILABLE TO THE CITY.
THE CITY DOES NOT WARRANT ITS ACCURACY OR COMPLETENESS.