

Legend

 Dowdell Public Utility District Boundary

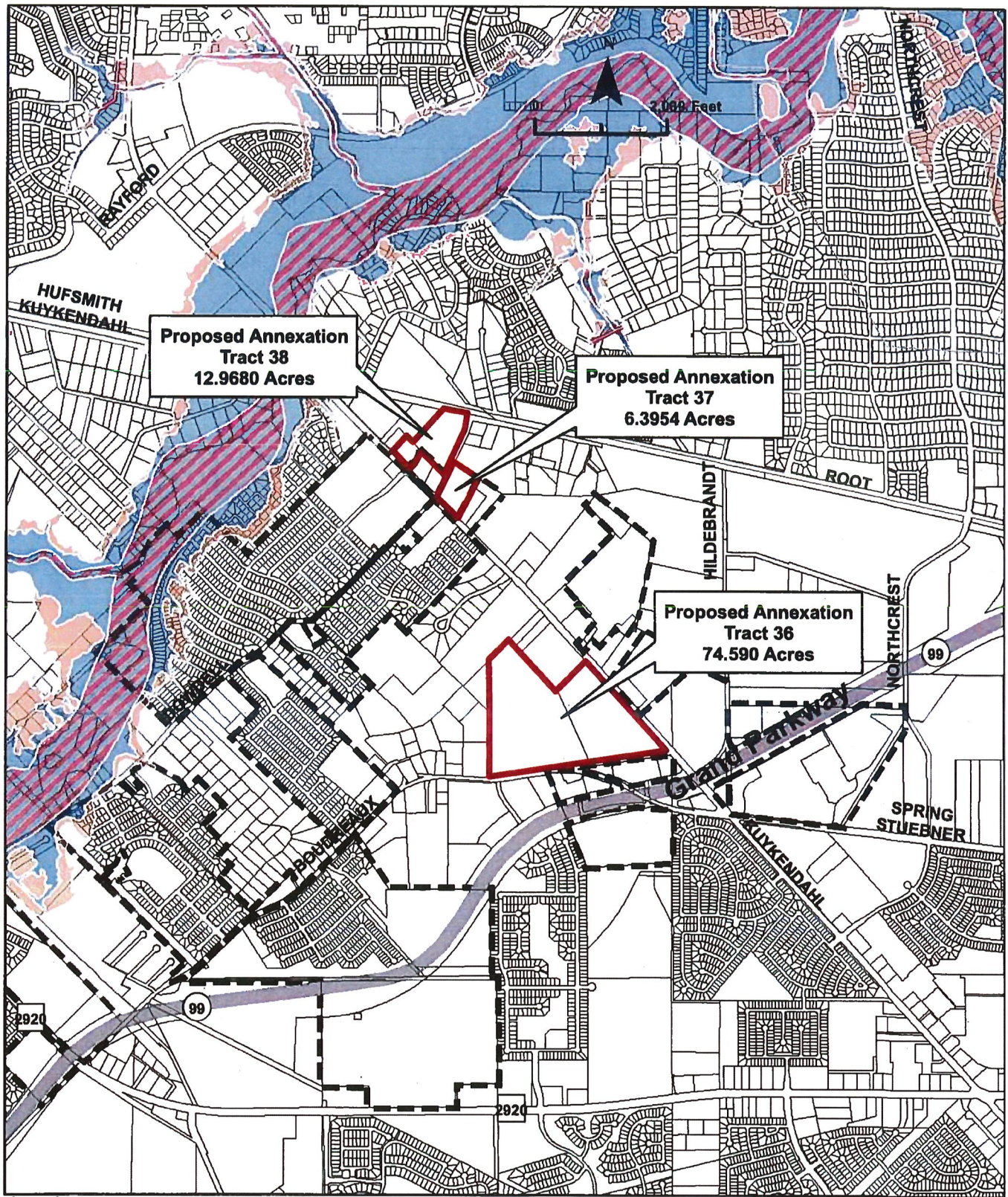
Dowdell Public Utility District

Vicinity
Key Map 290F, 290K

SOURCES: VDW&V 2018; H-GAC, 2014

F:\30000 Dowdell PUD\000-0\GIS\Maps\ArcMap\Tracts\363738Vicinity_8511P.mxd 6/6/2018 8:10:36 AM

VanDeWiele
& Vigler
Incorporated



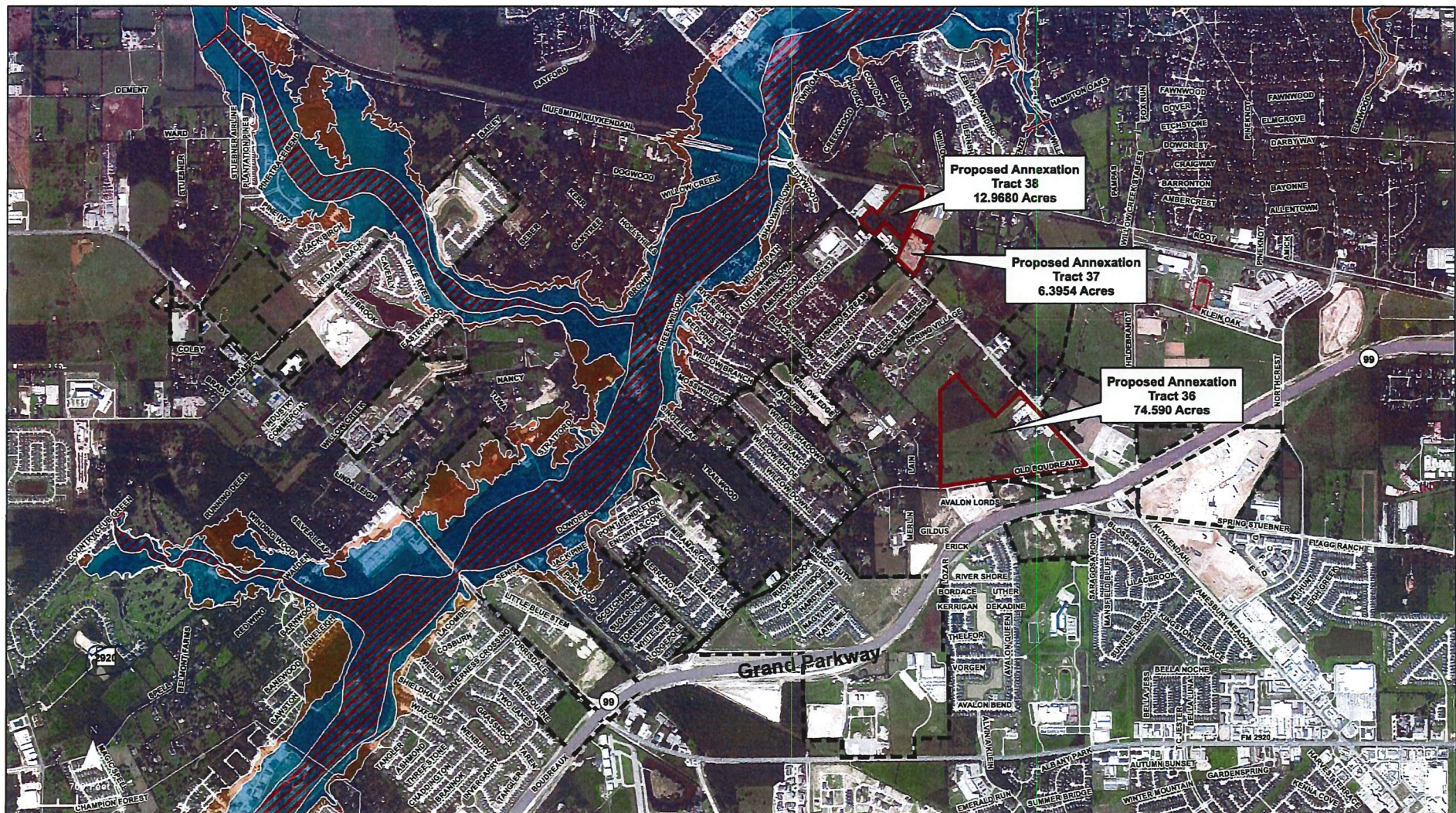
Dowdell Public Utility District

Annexation Tracts 36, 37, and 38
Flood Insurance Rate Map

FEMA: Panel 48201C0235M (Eff. 10/16/2013)
SOURCES: VDW&V 2018; H-GAC, 2014; FEMA 2013
F:\30000 Dowdell PUD\000-0\GIS\Maps\ArcMap\Tracts363738Flood_8511P.mxd 6/6/2018 9:26:31 AM

VanDeWiele
& Vigler
Incorporated

Page 18 of 25



- Legend**
- Dowdell Public Utility District Boundary
 - Regulatory Floodway
 - 100-Year Flood Zone
 - 500-Year Flood Zone

SOURCES: VDW&V 2016; H-GAC, 2014; ESRI 2014; FEMA 2015
F:\30000 Dowdell PUD\000-0\GIS\Map\ArcMap\Tracts\363738Floodplain_1117L.mxd 6/4/2018 11:21:10 AM

Dowdell Public Utility District
Flood Plain
Key Map 290F, 290K

*VanDeWiele
& Vogler
Incorporated*



400 0 400 800 1600 Feet

LINE TABLE - TRACT 8		
LINE	BEARING	DISTANCE
L1	N44°49'01"W	261.00'
L2	S89°25'44"E	21.12'
L3	S44°44'15"E	246.00'

LINE TABLE - TRACT 27		
LINE	BEARING	DISTANCE
1	N53°36'54"E	58.22
2	N50°44'31"E	161.71
3	S42°31'15"E	65.91
4	N48°23'04"E	39.59
5	S65°17'10"E	54.78
6	S59°18'06"E	66.31
7	S58°49'37"E	49.36
8	S56°57'11"E	91.66
9	S57°36'34"E	63.52
10	S44°12'43"E	55.42
11	S56°11'10"E	56.42
12	S54°31'00"E	22.16
13	S62°29'32"E	66.81
14	S50°04'50"E	54.63
15	S44°12'43"E	55.42
16	S31°29'11"E	27.05
17	S14°39'17"E	31.29
18	S10°34'47"E	44.26
19	S8°23'34"E	45.29
20	S10°34'47"E	31.27
21	N15°34'34"E	1.36
22	N45°02'43"E	225.56
23	S45°27'03"W	178.53
24	S47°45'40"E	254.53
25	S45°03'06"E	217.40
26	N45°33'55"E	217.40
27	N45°07'26"E	244.98

LINE TABLE - TRACT 21		
LINE	BEARING	DISTANCE
L1	N45°14'42"E	256.27'
L2	N89°25'36"E	153.68'
L3	S29°12'56"E	414.58'
L4	N60°52'03"E	267.92'
L5	S45°13'44"E	371.46'
L6	S44°48'03"W	75.65'

LINE TABLE - TRACT 2		
LINE	BEARING	DISTANCE
L1	N46°03'02"E	329.10'
L2	N73°25'02"E	222.00'
L3	S45°07'59"E	276.41'
L4	S45°10'27"W	624.69'
L5	N46°04'06"E	298.88'
L6	S46°25'05"E	4.86'
L7	N43°21'16"E	165.40'
L8	N45°42'06"E	74.65'
L9	N44°50'51"W	3.02'
L10	N45°22'50"E	61.80'

LINE TABLE - TRACT 21		
LINE	BEARING	DISTANCE
L1	N45°14'42"E	256.27'
L2	N89°25'36"E	153.68'
L3	S29°12'56"E	414.58'
L4	N60°52'03"E	267.92'
L5	S45°13'44"E	371.46'
L6	S44°48'03"W	75.65'

LINE TABLE - TRACT 2		
LINE	BEARING	DISTANCE
L1	N46°03'02"E	329.10'
L2	N73°25'02"E	222.00'
L3	S45°07'59"E	276.41'
L4	S45°10'27"W	624.69'
L5	N46°04'06"E	298.88'
L6	S46°25'05"E	4.86'
L7	N43°21'16"E	165.40'
L8	N45°42'06"E	74.65'
L9	N44°50'51"W	3.02'
L10	N45°22'50"E	61.80'

		OWNERSHIP TAB	
HA	CHERRY AND WIFE DARLYNN CHERRY		
HL	AARON L. CHERRY		
HC	BRADLEY A. FUCHS AND ANN B. FUCHS		
HE	DAVID R. JOHNSTON AND WIFE KAREN K. JOHNSTON		
HF	JAMES B. WIXTED AND WIFE KATHERINE B. WIXTED		
HG	H-M-W SPECIAL UTILITY DISTRICT		
HH	C. ROY DARDENNE AND WIFE VIRGINIA L. DARDENNE		
HI	SHARON E. BRANNEN		
HL	LAWRENCE D. TRAVLAND, II		
HK	LAWRENCE D. TRAVLAND AND MARY E. TRAVLAND		
HL	MARK E. FINNEY AND TRISA C. FINNEY		
HL	WAYNE WIDENER AND DEBRA WIDENER		
H.C.C. No. indicates Harris County Clerk's File Number			

7.58 ACRES	H.C.C.F.No.	20120032564
1.379 ACRES	H.C.C.F.No.	20180203683
2.096 ACRES	H.C.C.F.No.	20150316886
5.14 ACRES	H.C.C.F.No.	X124380
1.9753 ACRES	H.C.C.F.No.	V684909
1.9554 ACRES	H.C.C.F.No.	V197269
2.0088 ACRES	H.C.C.F.No.	V684914
1.000 ACRES	H.C.C.F.No.	Z325048
2.0223 ACRES	H.C.C.F.No.	Z00014919
2.0394 ACRES	H.C.C.F.No.	20090339742
1.000 ACRES	H.C.C.F.No.	20130464688
1.2115 ACRES	H.C.C.F.No.	20130464703
1.2238 ACRES	H.C.C.F.No.	T684650
1.1789 ACRES	H.C.C.F.No.	W048940

CHD. DIS.
566.86'

LINE TABLE-- TRACT 4		
LINE	BEARING	DISTANCE
L1	S46°13'00"W	38.33'
L2	S61°01'48"W	141.67'
L3	N80°44'48"W	67.30'
L4	N44°58'32"E	34.51'
L5	N45°01'28"W	36.12'
L6	N44°58'32"E	57.82'
L7	N45°01'28"W	59.50'
L8	N54°54'23"E	59.57'
L9	S51°10'07"E	56.92'
L10	N77°50'07"E	74.90'
L11	N06°07'04"W	24.51'
L12	S08°55'46"W	61.59'
L13	S31°50'56"W	61.59'
L14	S54°46'02"W	61.59'
L15	S77°41'04"W	61.59'
L16	N78°17'14"W	67.46'

LINE TABLE - TRACT 13		
LINE	LENGTH	BEARING
L1	25.32'	N00°15'30"E
L2	25.00'	S00°08'47"E

CURVE TABLE - TRACT 6					
CURVE	LENGTH	RADIUS	DELTA	CHD. BRG.	CHD. DIS.
C1	426.48'	1,115.92'	21°53'50"	N56°28'59"E	423.89'
C2	460.14'	1,175.92'	22°25'11"	N56°13'19"E	457.21'

LINE TABLE- TRACT 6		
LINE	BEARING	DISTANCE
L1	N02°07'10"W	20.87'
L2	S33°37'06"E	19.76'
L3	N00°08'47"W	25.00'
L4	N67°25'54"E	190.00'

LINE TABLE- TRACT 7		
LINE	BEARING	DISTANCE
L1	S44°56'42"W	3.41'
L2	S67°25'54"W	190.00'
L3	N44°54'51"W	39.42'
L4	S33°37'06"E	61.09'
L5	S45°32'04"W	30.55'

CURVE TABLE - TRACT 4					
CURVE	LENGTH	RADIUS	DELTA	CHD. BRG.	CHD. DIS.
C1	275.14'	1,175.92'	13°24'22"	S52°14'14"W	274.51'
C2	354.67'	1,175.92'	17°16'52"	S54°38'36"W	353.33'

CURVE TABLE - TRACT 7					
CURVE	LENGTH	RADIUS	DELTA	CHD. BRG.	CHD. DIS.
C1	436.66'	1,115.92'	22°25'11"	S56°13'19"W	433.88'
C2	144.06'	1,175.92'	07°01'10"	S63°55'19"W	143.97'

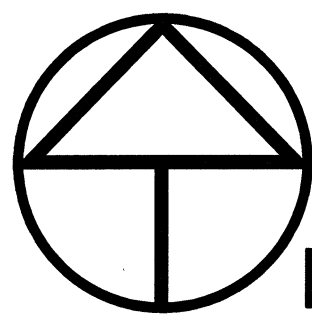
OWNERSHIP TABLE "A"			
A	Ricardo Navarro & Alicia Navarro	0.7305 Acres	H.C.C.F.No. T866113
B	John Earl Jones & Bency Green Jones	1.260 Acres	H.C.C.F.No. W444892
C	Ricky Larsson & Carla A. Larsson	4.000 Acres	H.C.C.F.No. T796337
D	Dudley I. Veal, III	1.260 Acres	H.C.C.F.No. U989495
E	Princess Investment, Inc.	1.4739 Acres	H.C.C.F.No. U503383
F	Dowd Plaza Center, L.L.C.	0.9108 Acres	H.C.C.F.No. U505107
G	Dowd Plaza Center, Ltd.	0.1153 Acres	H.C.C.F.No. T249983
H	Wills B. Kimbrell & Edith R. Kimbrell	1.6232 Acres	H.C.C.F.No. U681516
I	Henry Hiehouse & Florine Louise Hiehouse	0.051 Acres	H.C.C.F.No. V702965
J	Clinton D. Pendleton	2.668 Acres	H.C.C.F.No. V10. 111
K	George Lietner	0.15 Acres	H.C.C.F.No. Vol. 110, P. 168, H.C.D.R.
L	Harris County	Rem. 3.2 Acres	Vol. 538, P. 237, H.C.D.R.
M	Harris County	1.5 Acres	
N	George County	1.5 Acres	

OWNERSHIP TABLE "B"			
Louis J. Nagy or Carleen Nagy, Trustee	H.C.F.No. U812460		1/12th interest
Robert Howard Nagy	H.C.F.No. U946479		1/12th interest
The Nagy Living Trust, c/o Alice Elizabeth Nagy, Trustee	H.C.F.No. P501108		1/6th interest
Rosenda Howard	C.No. 169045, & 203162 P.R.H.C.T.		6th interest
Carl M. Leitner	C.No. 169045, & 203162 P.R.H.C.T.		6th interest
Judith M. Leitner	C.No. 169045, & 203162 P.R.H.C.T.		1/6th interest
Ruth Violet Leitner	C.No. 169045 P.C.B.C.T.		1/8th interest
George Wayne Leitner	C.No. 169045 P.C.B.C.T.		1/8th interest
James Michael Leitner	C.No. 169045 P.C.B.C.T.		1/8th interest
C.No. indicates Case Number			
H.C.F.No. indicates Harris County Clerk's File Number			
P.C.B.C.T. indicates Probate Court of Bell County, Texas			
P.R.H.C.T. indicates Probate Court of Harris County, Texas			

DISTRICT BOUNDARY MAP OF DOWDELL PUBLIC UTILITY DISTRICT
THIRTY-EIGHT TRACTS TOTALING 1,308.2889 ACRES OF LAND
SITUATED IN THE
THE ELIZABETH SMITH SURVEY, A-70, THE JAMES M. MCGEE
SURVEY, A-554, THE JAMES M. MCGEE SURVEY, A-558, THE JESSE
PRUITT SURVEY, A-629, THE JOHN BROCK SURVEY, A-122, THE
GULF, COLORADO AND SANTA FE RAILROAD COMPANY,
SURVEY, A-1301, AND THE WILLIAM HIRONYMUS SURVEY, A-352,
HARRIS COUNTY, TEXAS

COPYRIGHT © WINDROSE LAND SERVICES THIS DOCUMENT IS COPYRIGHTED AND IS AN INSTRUMENT OF SERVICE FOR THE SPECIFIC PROJECT OR TRANSACTION FOR WHICH IT WAS PREPARED. REUSE, COPYING OR MODIFICATION OF THIS DOCUMENT WHETHER IN HARD COPY OR ELECTRONIC FORMAT OTHER THAN FOR THE SPECIFIC PURPOSE INTENDED, WITHOUT WRITTEN PERMISSION FROM WINDROSE LAND SERVICES IS A VIOLATION OF FEDERAL COPYRIGHT LAW.

FILED BY: -	CHECKED BY: RPK	JOB NO. 52801
DRAWN BY: DG	DATE: JULY 2016	SHEET NO. 2 OF 3



NORTH

GRAPHIC SCALE: 1" = 400'

400 0 400 800 1600 Feet

LINE TABLE - TRACT 24			
LINE	BEARING	DISTANCE	
L1	N54°20'43"W	29.51'	
L2	N15°33'44"W	789.52'	
L3	N14°13'09"E	156.17'	
L4	N66°19'59"W	249.36'	
L5	N02°34'29"E	109.87'	
L6	N32°46'45"W	179.38'	

CURVE TABLE - TRACT 14					
CURVE	LENGTH	RADIUS	DELTA	CHD. BRG.	CHD. DIS.
C1	121.89'	130.27'	53°36'33"	N20°56'29"W	117.49'

CURVE TABLE - TRACT 9					
CURVE	LENGTH	RADIUS	DELTA	CHD. BRG.	CHD. DIS.
C1	105.42'	531.07'	11°22'25"	S38°49'40"W	105.25'
C2	159.16'	844.24'	10°48'07"	S38°32'30"W	158.93'
C3	40.47'	724.24'	03°12'08"	S42°20'30"W	40.47'
C4	206.34'	844.24'	14°00'13"	N47°44'34"E	205.83'
C5	55.87'	312.90'	10°13'47"	N49°37'46"E	55.79'
C6	31.92'	156.21'	11°42'27"	N27°07'34"W	31.86'
C7	3.10'	191.01'	00°55'44"	N32°30'53"W	3.10'

LINE TABLE - TRACT 1		
LINE	BEARING	DISTANCE
L1	N88°04'09"W	325.43'
L2	N44°57'38"W	61.59'
L3	S47°31'42"E	126.64'
L4	S73°16'29"W	61.64'
L5	N45°44'14"E	44.54'
L6	N44°15'46"W	225.36'
L7	N47°43'36"E	55.07'
L8	N81°47'36"E	72.30'
L9	N69°29'36"E	106.10'
L10	N73°04'36"E	99.90'
L11	N41°47'36"E	82.80'
L12	N21°20'36"E	93.50'
L13	N07°15'24"W	95.30'
L14	N20°03'36"E	68.90'
L15	N52°10'36"E	183.10'
L16	N43°58'40"E	122.82'
L17	S44°55'46"E	248.66'

LINE TABLE - TRACT 9		
LINE	BEARING	DISTANCE
L1	N42°40'26"E	251.33'
L2	N47°01'30"W	10.00'
L3	S32°41'15"E	140.05'
L4	S02°37'39"W	135.55'
L5	S68°15'49"E	238.07'
L6	S1°16'10"W	115.48'
L7	S54°17'33"E	126.94'
L8	S57°41'51"E	255.89'
L9	N70°13'25"W	210.22'
L10	S40°44'26"W	77.91'
L11	N47°40'37"W	60.02'
L12	N47°40'33"W	60.02'
L13	N40°44'26"E	74.60'
L14	N54°44'39"E	82.63'
L15	N44°30'53"E	209.24'
L16	N21°16'21"W	137.06'
L17	N32°58'45"W	45.77'

LINE TABLE - TRACT 27		
LINE	BEARING	DISTANCE
L1	N53°36'54"E	58.27'
L2	N50°44'13"E	161.71'
L3	N52°13'15"E	69.01'
L4	S48°23'04"E	55.59'
L5	S63°58'40"E	54.76'
L6	S59°18'08"E	68.31'
L7	S59°49'17"E	49.15'
L8	S58°57'11"E	91.66'
L9	S57°36'34"E	63.52'
L10	S47°40'37"E	14.10'
L11	S55°11'10"E	56.42'
L12	S54°31'00"E	22.16'
L13	S52°29'30"E	254.51'
L14	S50°04'50"E	54.63'
L15	S38°17'16"E	39.23'
L16	S31°29'11"E	57.05'
L17	S10°34'47"E	44.26'
L18	S6°29'34"W	45.29'
L19	S10°35'17"E	31.97'
L20	S01°54'54"W	1.36'
L21	N45°02'43"E	225.56'
L22	S45°02'43"E	178.53'
L23	S45°02'43"E	178.53'
L24	S47°45'40"E	254.51'
L25	S45°06'44"W	263.27'
L26	N44°53'55"E	217.40'
L27	N45°07'28"E	244.95'

MATCH LINE SEE SHEET 3 OF 3 SHEETS
MATCH LINE SEE SHEET 2 OF 3 SHEETS

LINE TABLE - TRACT 18		
LINE	BEARING	DISTANCE
L1	N88°23'32"E	420.57'
L2	S47°39'31"E	150.00'

LINE TABLE - TRACT 20		
LINE	BEARING	DISTANCE
L1	N47°43'02"W	258.24'
L2	N42°19'24"W	250.17'
L3	S47°40'37"E	138.22'
L4	S42°13'51"W	182.30'

CURVE TABLE - TRACT 20					
CURVE	LENGTH	RADIUS	DELTA	CHD. BEARING	CHD. DIST.
C1	143.78'	140.00'	58°50'27"	S18°11'31"E	137.54'

LINE TABLE - TRACT 23		
LINE	BEARING	DISTANCE
L1	S47°40'37"E	348.07'
L2	S42°19'24"W	250.17'
L3	N47°43'02"W	348.07'
L4	N42°19'24"E	250.42'

LINE TABLE - TRACT 19		
LINE	BEARING	DISTANCE
L1	N02°47'32"W	28.34'
L2	S47°41'22"E	272.14'
L3	N47°40'37"W	250.57'

OWNERSHIP TABLE "E"		
A	3 M & P Investments, Inc.	Res. "A"
B	Res. "A" Mahaffey Road Shopping Center	Res. "B"
C	Mahaffey Partners, LLC	
D	Res. "B" Mahaffey Road Shopping Center	7,700.00 Acres
E	Accent Building Products	
F	Twila Longness	
G	Anthony K. Hebert or Barbara N. Hebert	
H	Barbara Gault	
I	Anthony K. or Barbara Nell Hebert	16,244 S.F.
J	Michelle Elizabeth Williams	16,965 S.F.
K	Javier A. Molina and Maricela R. Molina	18,872 S.F.
L	Alma R. Casas	17,714 S.F.
M	Maria A. Gregorio	Lot 12
N	Jose Orlando Valasquez and wife,	18,970 S.F.
O	Rudis Elizabeth Valasquez	18,986 S.F.
P	M. Gregorio Cuevas and wife, Rosa Flores	19,060 S.F.
Q	Dwain E. Saunders	18,958 S.F.
R	Isidro Barrera	18,976 S.F.
S	Santiago Armenta	17,597 S.F.
T	Santiago Armenta	7,5864 Acres
U	Mahaffey Road Partnership, LLP	

H.C.C.F. No. Indicates Harris County Clerk's File Number
H.C.D.R. Indicates Harris County Deed Records
H.C.M.R. Indicates Harris County Map Records
F.C. No. Indicates Film Code Number

OWNERSHIP TABLE "F"		
A	William R. Matt	1.00 Acre
B	William R. Matt and wife, Joan M. Matt	2.00 Acres
C	Elan Development, L.P. (Tract I)	1,000 Acres
D	Teddy A. Klein & wife, Grace Leora Klein	1,500.5 Acres
E	(Parcel Two)	
F	Elan Development, L.P. (Tract IV)	0.507 Acre
G	Elan Development, L.P. (Tract III)	0.376 Acre
H	Elan Development, L.P. (Tract II)	1,526.5 Acres
I	(non-exclusive roadway easement)	
J	Frank Holding Co., Ltd.	2.5 Acres
K	Frank Holding Co., Ltd.	0.123 Acre
L	Frank Holding Co., Ltd.	2,536 Acres
M	Elan Development, L.P.	0.3811 Acre
N	Elan Development, L.P. (Tract I)	1,907 Acres
O	Elan Development, L.P. (Tract V)	1,257 Acres
P	Elan Development, L.P.	0.5299 Acre
Q	Elan Development, L.P.	0.6041 Acre
R	Elan Development, L.P.	0.4613 Acre
S	Elan Development, L.P.	0.1153 Acre
T	William Thomas Grissom, Sr.	1,511.3 Acres
U	and wife, Sylvia A. Grissom	
V	W.T. Grissom	1,721.6 Acres

H.C.C.F.No. Indicates Harris County Clerk's File Number
H.C.D.R. Indicates Harris County Deed Records

CURVE TABLE - TRACT 16					
CURVE	LENGTH	RADIUS	DELTA	CHD. BRG.	CHD. DIS.
C1	172.03'	125.00'	78°51'03"	S82°12'35"W	158.77'
C2	12.53'	10.00'	71°47'55"	S85°44'09"W	11.73'
C3	32.73'	28.00'	73°01'12"	S87°20'48"W	30.44'
C4	13.87'	10.00'	79°26'41"	S85°08'03"W	12.78'
C5	239.31'	795.79'	171°34'47"	S14°22'39"E	238.41'

OWNERSHIP TABLE "D"		
A	JOSE R. CERVANTES	0.7688 ACRE
B	AARON GUILLORY AND WIFE, TRACY GUILLORY	0.7754 ACRE
C	FRANK SIMS AND WIFE, SHIRLEY SIMS	0.7529 ACRE
D	LARRY JAMES ORODOWICZ AND WIFE, SUZANNE ORODOWICZ	0.7553 ACRE
E	LARRY JAMES ORODOWICZ AND WIFE, SUZANNE ORODOWICZ	0.7553 ACRE
F	PATRICK W. WRIGHT AND WIFE, DEBORAH WRIGHT	0.5000 ACRE
G	JIM GERHART, JR.	1.505 ACRES
H	SAGE ENTERPRISES, L.L.P. (RESIDUE)	3.4359 ACRES
I	LOWE HIGHLANDS RESTRICTED RESERVE "A"	
J	COUNTY OF HARRIS, TEXAS (TRACT TWO)	1.7526 ACRES

H.C.C.F. No. Indicates Harris County Clerk's File Number
H.C.D.R. Indicates Harris County Deed Records
H.C.M.R. Indicates Harris County Map Records
F.C. No. Indicates Film Code Number

LINE TABLE - TRACT 16		
LINE	BEARING	DISTANCE
L1	N58°21'53"W	20.02'
L2	S49°50'12"W	63.94'
L3	N55°08'37"W	6.58'
L4	S45°24'43"W	145.76'
L5	S67°06'43"W	95.26'
L6	S48°56'57"E	82.24'
L7	S05°45'51"E	21.22'
L8	S77°28'22"W	609.69'
L9	S46°56'57"E	208.16'
L10	S42°47'04"W	376.70'

LINE TABLE - TRACT 10		
LINE	BEARING	DISTANCE
L1	S44°17'55"W	10.15'
L2	N30°14'14"W	57.24'
L3	N59°03'09"E	215.12'

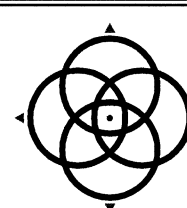
CURVE TABLE - TRACT 10					
CURVE	LENGTH	RADIUS	DELTA	CHD. BRG.	CHD. DIS.
C1	425.97'	5,669.65'	04°18'17"	N43°02'05"W	425.87'
C2	21.90'	5,669.65'	00°13'17"	N45°04'35"W	21.90'
C3	404.07'	5,669.65'	04°05'00"	N42°55'26"W	403.98'

LINE TABLE - TRACT 15		
LINE	BEARING	DISTANCE
L1	N45°09'29"W	32.50'
L2	N44°17'55"E	10.15'

CURVE TABLE - TRACT 15					
CURVE	LENGTH	RADIUS	DELTA	CHD. BRG.	CHD. DIS.
C1	567.40'	3,759.77'	08°38'48"	N49°28'53"W	566.86'

OWNERSHIP TABLE "H"		
HA	AARON CHERRY AND WIFE DARLYNN CHERRY	7.58 ACRES
HB	LPUSA, INC.	1,379 ACRES
HC	BRUSAI, INC.	2,096 ACRES
HD	JAMES A. FUCHS AND ANN B. FUCHS	5.14 ACRES
HE	DAVID R. JOHNSTON AND WIFE KAREN K. JOHNSTON	1,875.5 ACRES
HF	JAMES B. WIXTED	1,975 ACRES
HG	JAMES B. WIXTED AND WIFE KATHERINE B. WIXTED	2,008 ACRES
HH	W. SPECIAL UTILITY DISTRICT	1,000 ACRES
HI	C. ROLAND DARDENNE AND WIFE VIRGINIA L. DARDENNE	2,023 ACRES
HJ	SHARON E. BRANNEN	2,039 ACRES
HK	LAWRENCE D. TRAVLAND, II	1,228 ACRES
HL	LAWRENCE D. TRAVLAND AND MARY E. TRAVLAND	1,215 ACRES
HM	MARK E. FINNEY AND TRISA C. FINNEY	1,228 ACRES
HN	WAYNE WIDENER AND DEBRA WIDENER	1,1789 ACRES

H.C.C.F. No. Indicates Harris County Clerk's File Number



WINDROSE
LAND SURVEYING | PLATTING

3200 WILCREST, SUITE 325 | HOUSTON, TX 77042 | 713.458.2281
FIRM REGISTRATION NO. 10108800 | WINDROSESERVICES.COM

DISTRICT BOUNDARY MAP OF DOWDELL PUBLIC UTILITY DISTRICT
THIRTY-EIGHT TRACTS TOTALING 1,308,288.9 ACRES OF LAND
SITUATED IN THE
THE ELIZABETH SMITH SURVEY, A-70, THE JAMES M. MCGEE
SURVEY, A-554, THE JAMES M. MCGEE SURVEY, A-558, THE JESSE
PRUITT SURVEY, A-629, THE JOHN BROCK SURVEY, A-122, THE
GULF, COLORADO AND SANTA FE RAILROAD COMPANY,
SURVEY, A-1301, AND THE WILLIAM HIRONYMUS SURVEY, A-352,
HARRIS COUNTY, TEXAS

COPYRIGHT © WINDROSE LAND SERVICES THIS DOCUMENT IS COPYRIGHTED AND IS AN INSTRUMENT OF SERVICE FOR
THE SPECIFIC PROJECT OR TRANSACTION FOR WHICH IT WAS PREPARED. REUSE, COPYING OR MODIFICATION OF THIS
DOCUMENT WHETHER IN HARD COPY OR ELECTRONIC FORMAT OTHER THAN FOR THE SPECIFIC PURPOSE INTENDED,
WITHOUT WRITTEN PERMISSION FROM WINDROSE LAND SERVICES IS A VIOLATION OF FEDERAL COPYRIGHT LAW.

FILED BY:	-	CHECKED BY:	RPK	JOB NO.	52801
DRAWN BY:	DG	DATE:	JULY 2016	SHEET NO.	3 OF 3

Z:\52801-DOWDELL PUBLIC UTILITY DISTRICT MAP\3-PUB-384-PLATTING - TITLING - 11/20/17