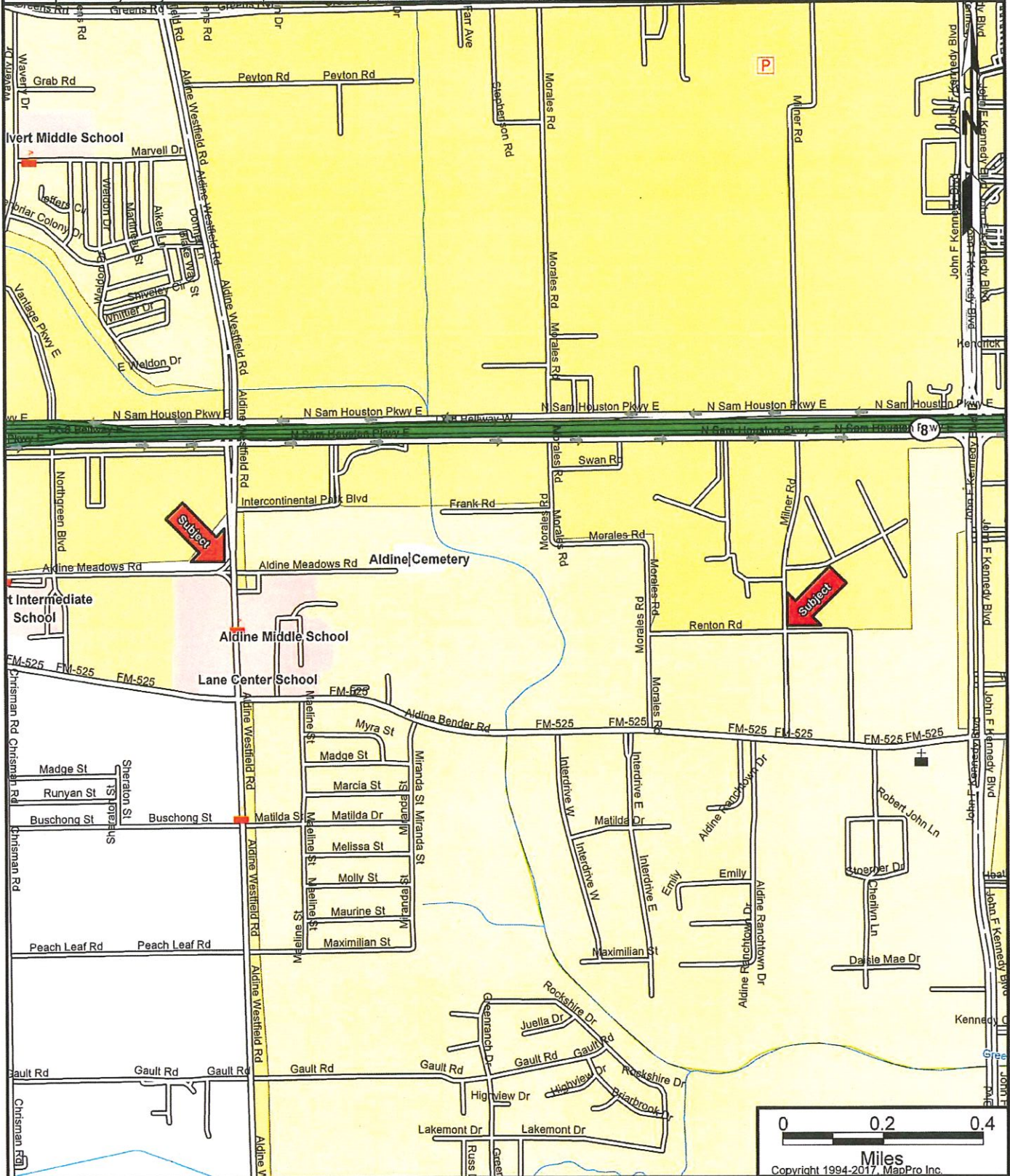


LOCATION MAP

Description: Easement Acquisition for 108-Inch Water Line from Milner Road to Aldine Westfield
 WBS #S-000900-0157-2; Council District B; Key Maps 373 V and 374S, T, W
 Subject Address: , Aldine, TX 77032
 Prepared by: City of Houston, 611 Walker, 19th Floor, Houston, TX 77002



CAUTION:

The location of property arrows shown on this map are approximate only. Inaccuracies may exist on map such as missing, incorrectly drawn, or incorrectly addressed streets. Please report any such inaccuracy to MapPro, Inc. so that appropriate corrections can be made.

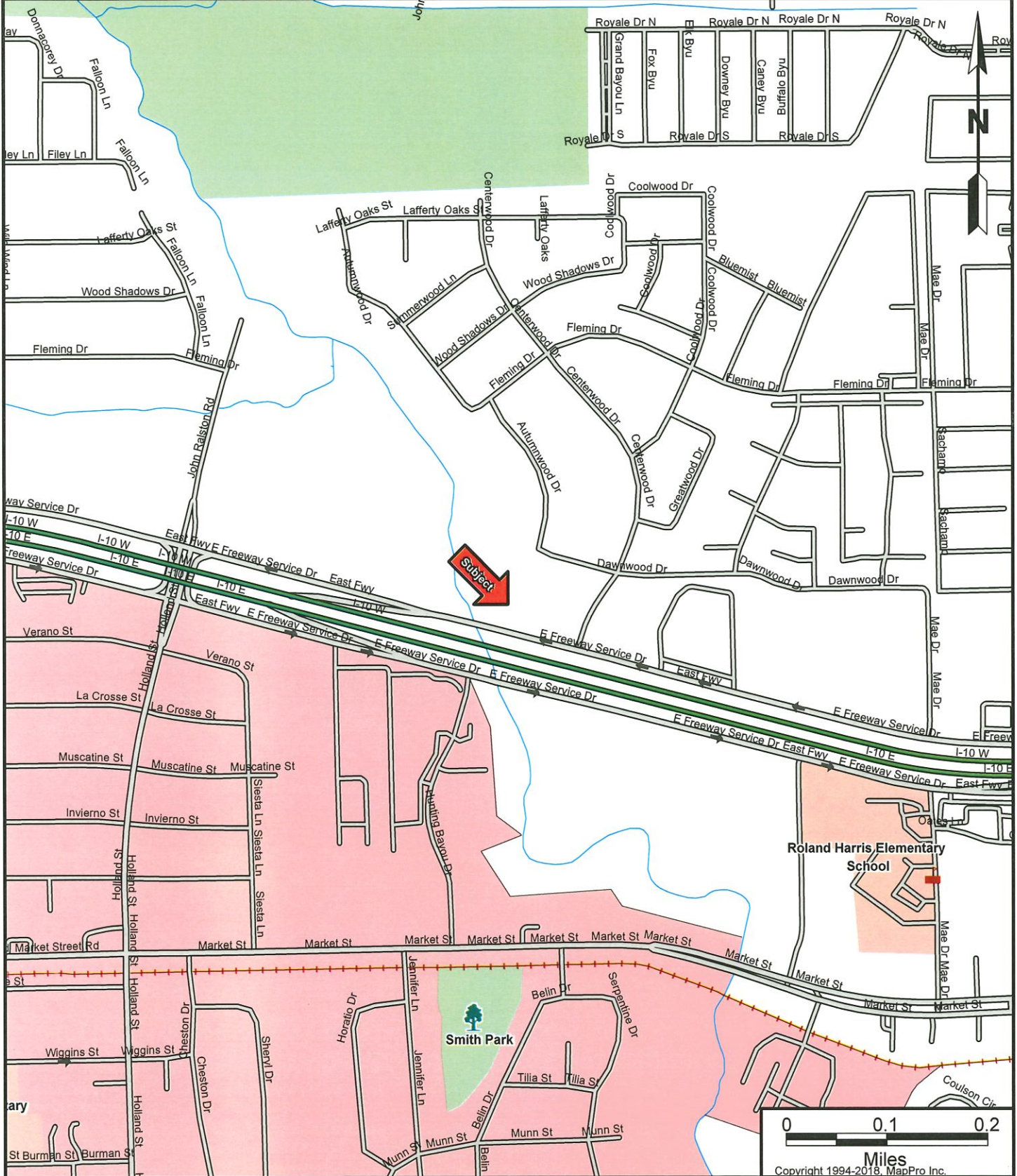
LOCATION MAP

Description: Miscellaneous Large Diameter Water Line Improvements - Package 1 Project [Map 1 of 2]

WBS# S-000900-0163-2; Council District I; Key Maps 496F and 493R

Subject Address: 11901 E Freeway Service Road, Houston, TX 77013

Prepared by: City of Houston, 611 Walker, 19th Floor, Houston, TX 77002



CAUTION:

The location of property arrows shown on this map are approximate only. Inaccuracies may exist on map such as missing, incorrectly drawn, or incorrectly addressed streets. Please report any such inaccuracy to MapPro, Inc. so that appropriate corrections can be made.

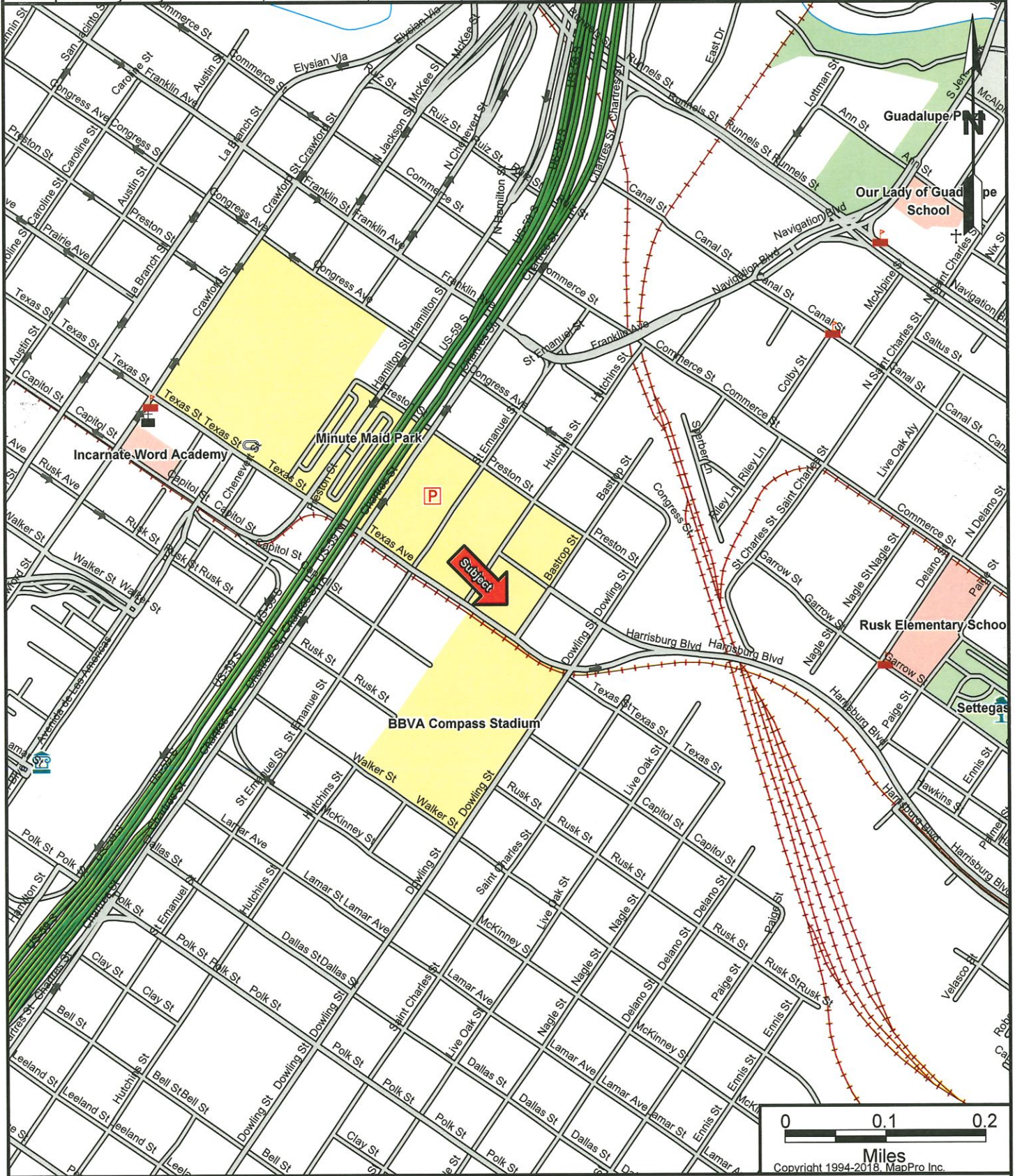
LOCATION MAP

Description: Miscellaneous Large Diameter Water Line Improvements - Package 1 [Map 2 of 2]

WBS: S-000900-0163-2; Council District I; Key Maps 496F, 493R

Subject Address: , Houston, TX 77003

Prepared by: City of Houston, 611 Walker, 19th Floor, Houston, TX 77002



CAUTION:

The location of property arrows shown on this map are approximate only. Inaccuracies may exist on map such as missing, incorrectly drawn, or incorrectly addressed streets. Please report any such inaccuracy to MapPro, Inc. so that appropriate corrections can be made.

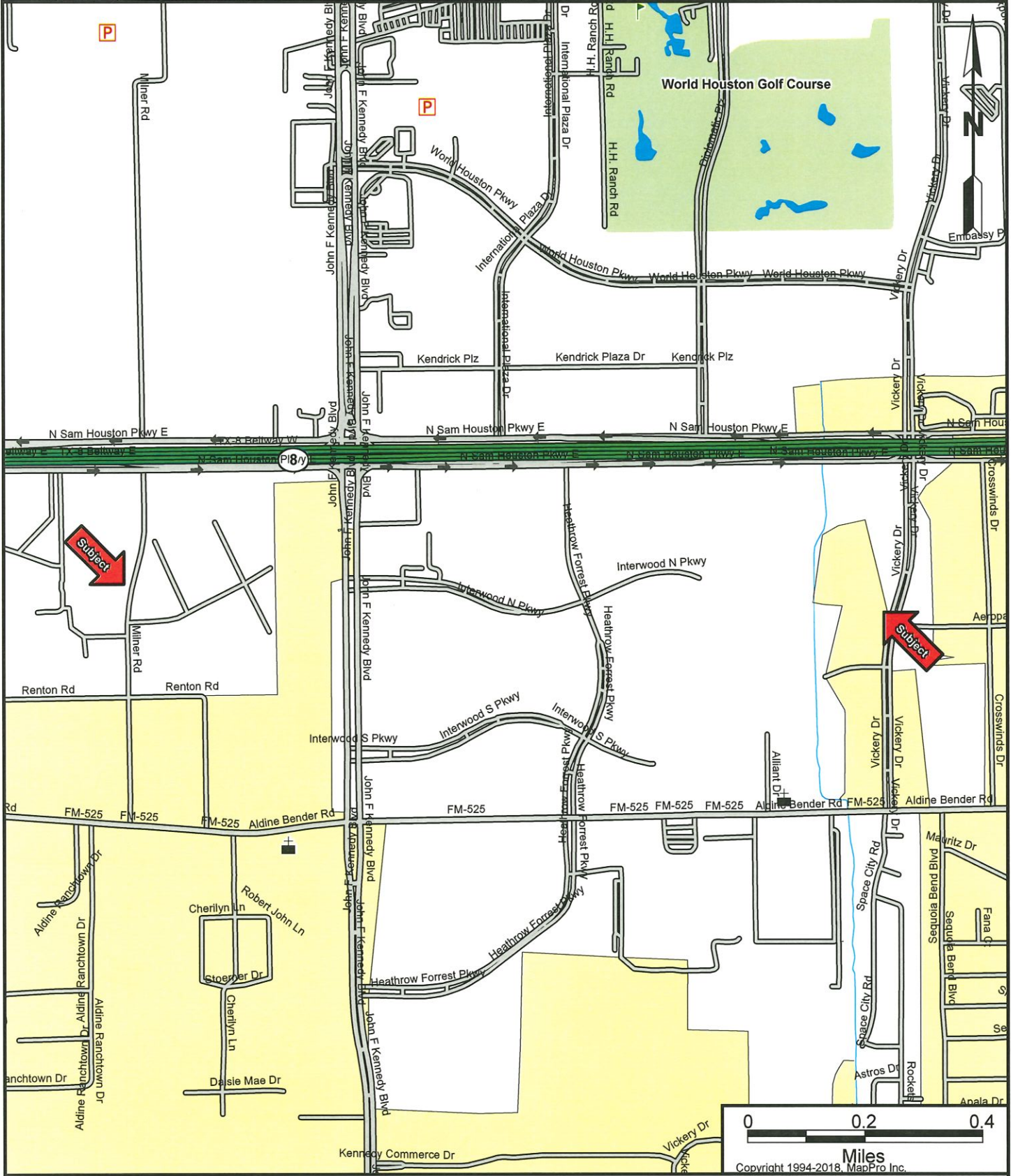
LOCATION MAP

Description: 108-Inch Water Line from Vickery Drive to Milner Road (Block A) Easement Acquisition

WBS# S-000900-0164-2; Council District B; Key Maps 374T, 374U and 374Y

Subject Address: , Houston, TX 77032

Prepared by: City of Houston, 611 Walker, 19th Floor, Houston, TX 77002



CAUTION:

The location of property arrows shown on this map are approximate only. Inaccuracies may exist on map such as missing, incorrectly drawn, or incorrectly addressed streets. Please report any such inaccuracy to MapPro, Inc. so that appropriate corrections can be made.

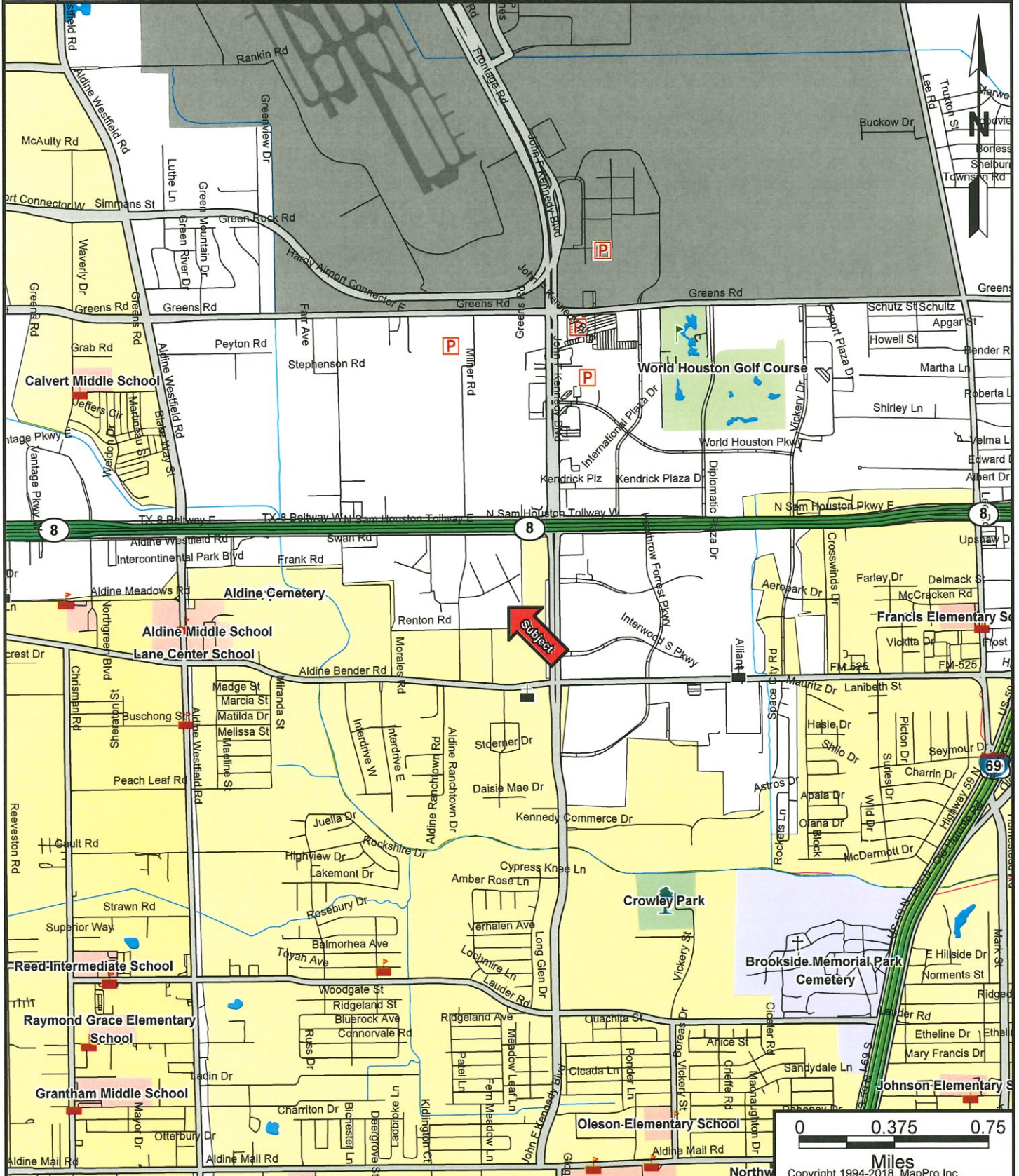
LOCATION MAP

Description: 108-Inch Water Line from Vickery Dr to Milner Rd (Block B) Easement Acquisition

WBS# S-000900-0164B-2-01; Council District B and ETJ; Key Map 374S, T

Subject Address: , Houston, TX 77032

Prepared by: City of Houston, 611 Walker, 19th Floor, Houston, TX 77002



CAUTION:

The location of property arrows shown on this map are approximate only. Inaccuracies may exist on map such as missing, incorrectly drawn, or incorrectly addressed streets. Please report any such inaccuracy to MapPro, Inc. so that appropriate corrections can be made.

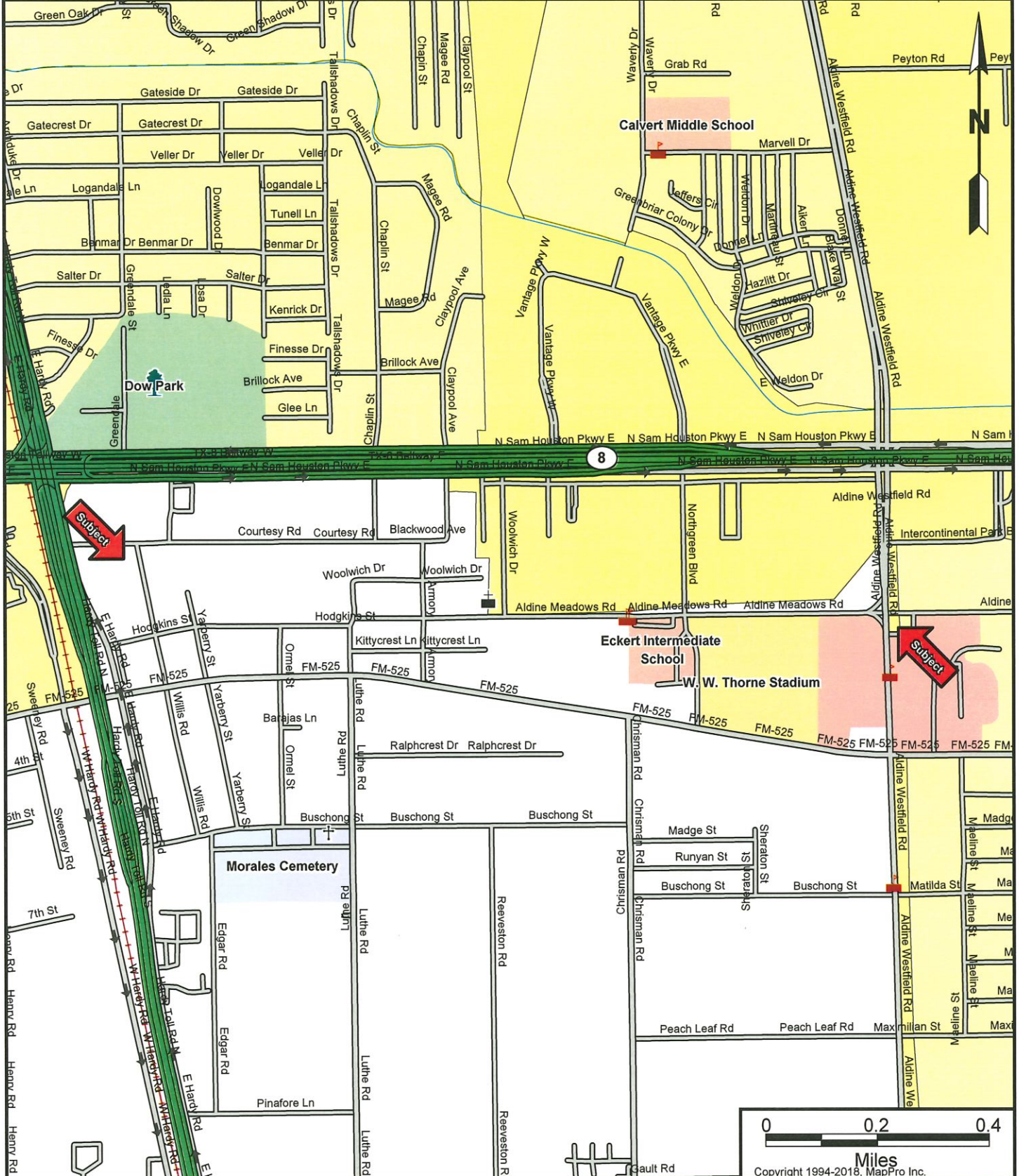
LOCATION MAP

Description: 108-Inch Water Line along City Easements from Aldine Westfield to Willis Street

WBS S-000900-0165-2; Council District B, ETJ; KEY MAP 373T,373U,373V

Subject Address: , Aldine, TX 77032

Prepared by: City of Houston, 611 Walker, 19th Floor, Houston, TX 77002



CAUTION:

The location of property arrows shown on this map are approximate only. Inaccuracies may exist on map such as missing, incorrectly drawn, or incorrectly addressed streets. Please report any such inaccuracy to MapPro, Inc. so that appropriate corrections can be made.

LOCATION MAP

Description: 66-Inch Water Line Interconnection along W Hardy Rd from Beltway 8 to Greens Rd

WBS S-000900-0166-2; Council District B; Key Map 373P and 373T

Subject Address: , Houston, TX 77060

Prepared by: City of Houston, 611 Walker, 19th Floor, Houston, TX 77002



CAUTION:

The location of property arrows shown on this map are approximate only. Inaccuracies may exist on map such as missing, incorrectly drawn, or incorrectly addressed streets. Please report any such inaccuracy to MapPro, Inc. so that appropriate corrections can be made.

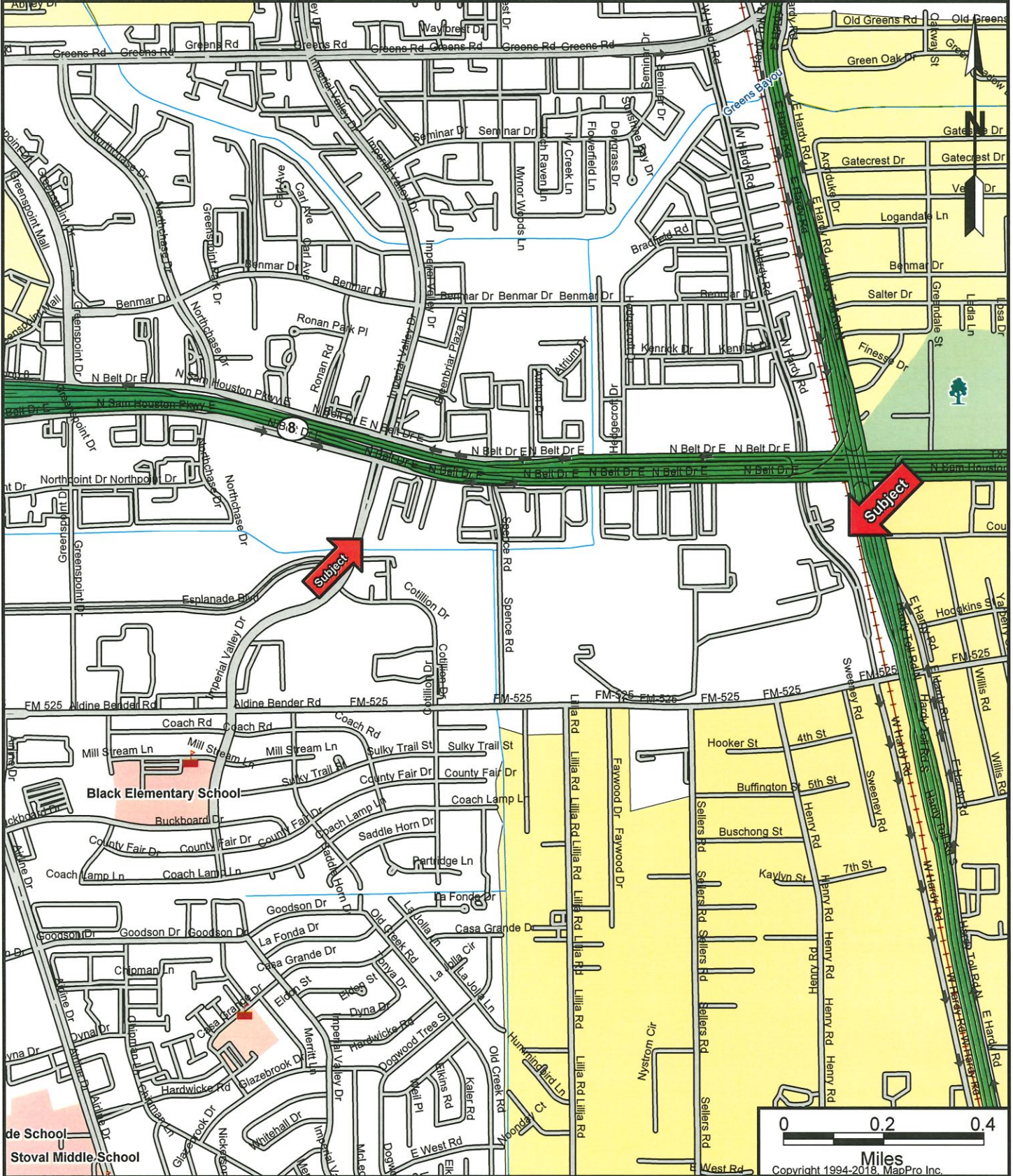
LOCATION MAP

Description: 108 INCH WATER LINE ALONG CITY EASEMENTS (FROM WILLIS RD TO IMPERIAL VALLEY)

WBS S-000900-0167-2; City Council B; Key Map 373S

Subject Address: 16102 Spence Rd, Houston, TX 77060

Prepared by: City of Houston, 611 Walker, 19th Floor, Houston, TX 77002

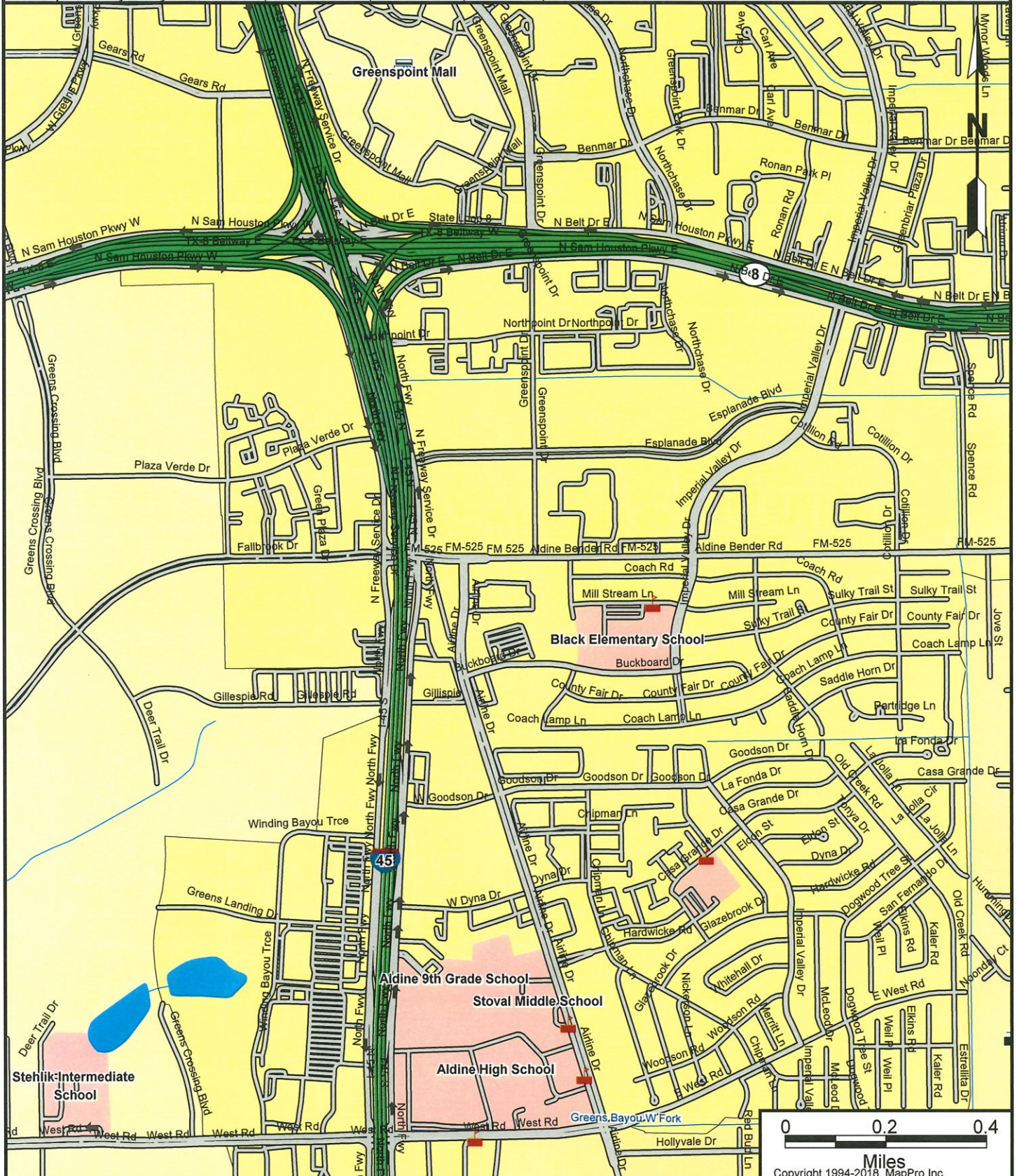


CAUTION:

The location of property arrows shown on this map are approximate only. Inaccuracies may exist on map such as missing, incorrectly drawn, or incorrectly addressed streets. Please report any such inaccuracy to MapPro, Inc. so that appropriate corrections can be made.

LOCATION MAP

Description: 108-INCH WATER LINE ALONG CITY EASEMENTS
 IMPERIAL VALLEY DRIVE TO GREEN PLAZA DRIVE;
 WBS S-000900-0168-2; Council District B; Key Maps
 Prepared by: City of Houston, 611 Walker, 19th Floor, Houston, TX 77002



CAUTION:

Inaccuracies may exist on map such as missing, incorrectly drawn, or incorrectly addressed streets. Please report any such inaccuracy to MapPro, Inc. so that appropriate corrections can be made.