

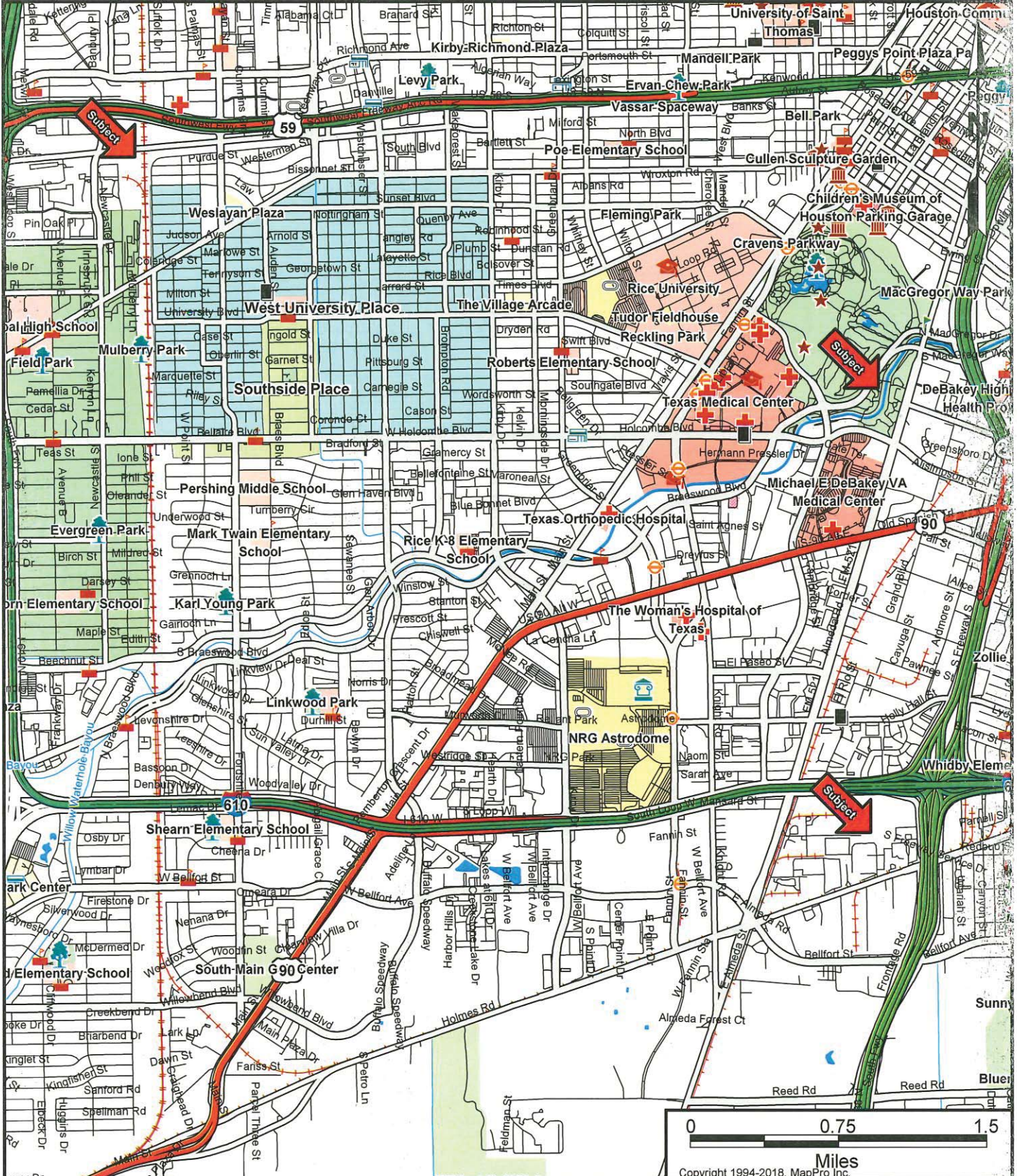
LOCATION MAP

Description: MacGregor Way North #1, Magnet and Westpark #1

Lift Station Renewal and Replacement

Subject Address: , Houston, TX 77030

Prepared by: City of Houston, 611 Walker, 19th Floor, Houston, TX 77002



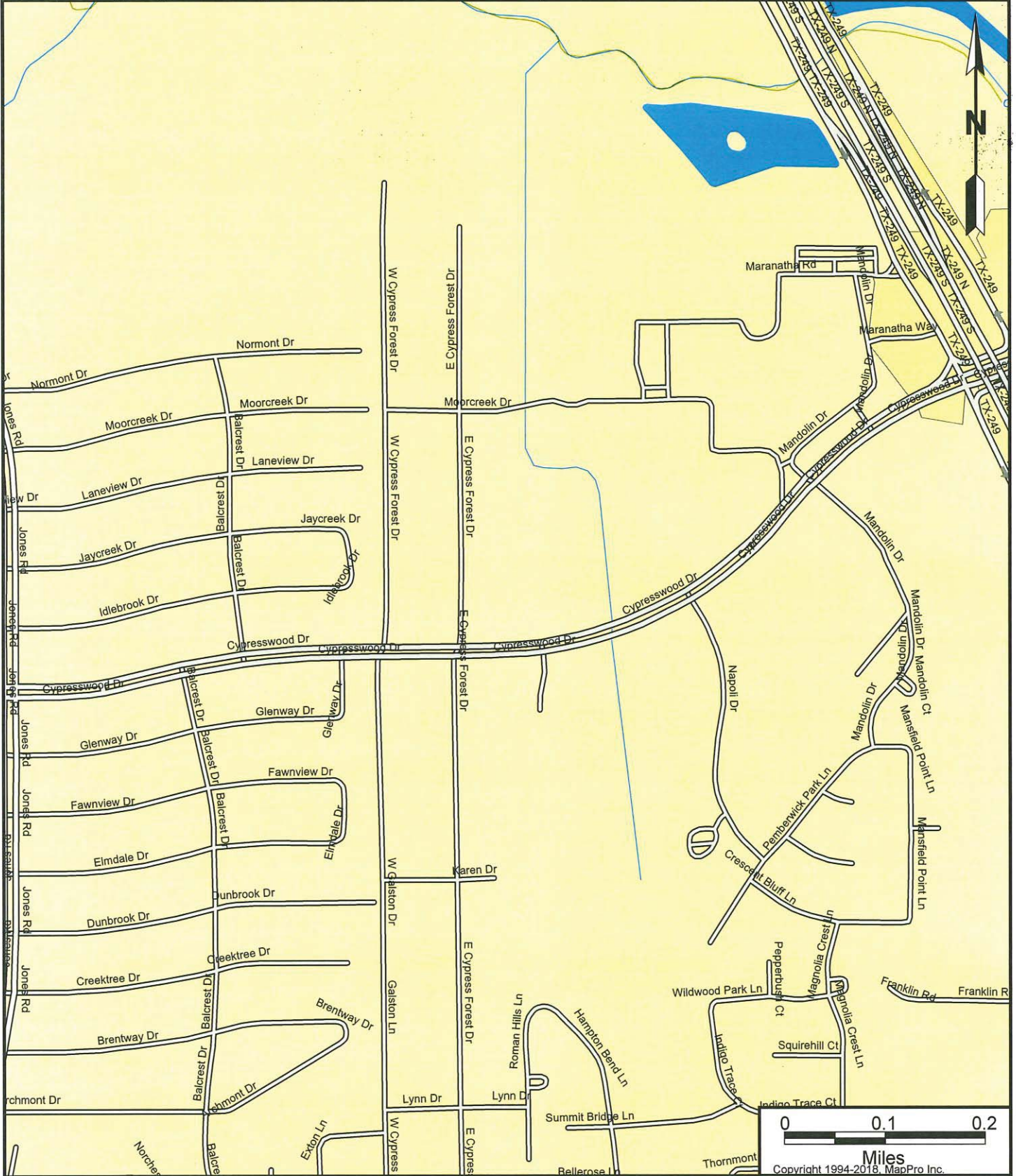
CAUTION:

The location of property arrows shown on this map are approximate only. Inaccuracies may exist on map such as missing, incorrectly drawn, or incorrectly addressed streets. Please report any such inaccuracy to MapPro, Inc. so that appropriate corrections can be made.

LOCATION MAP

Description: LIFT STATION DIVERSIONS FOR MUD #237 AND MUD #159 PROJECT
COUNCIL DISTRICT A; KEY MAP 370J AND 370K; WBS R-000267-117B-2

Prepared by: City of Houston, 611 Walker, 19th Floor, Houston, TX 77002



CAUTION:

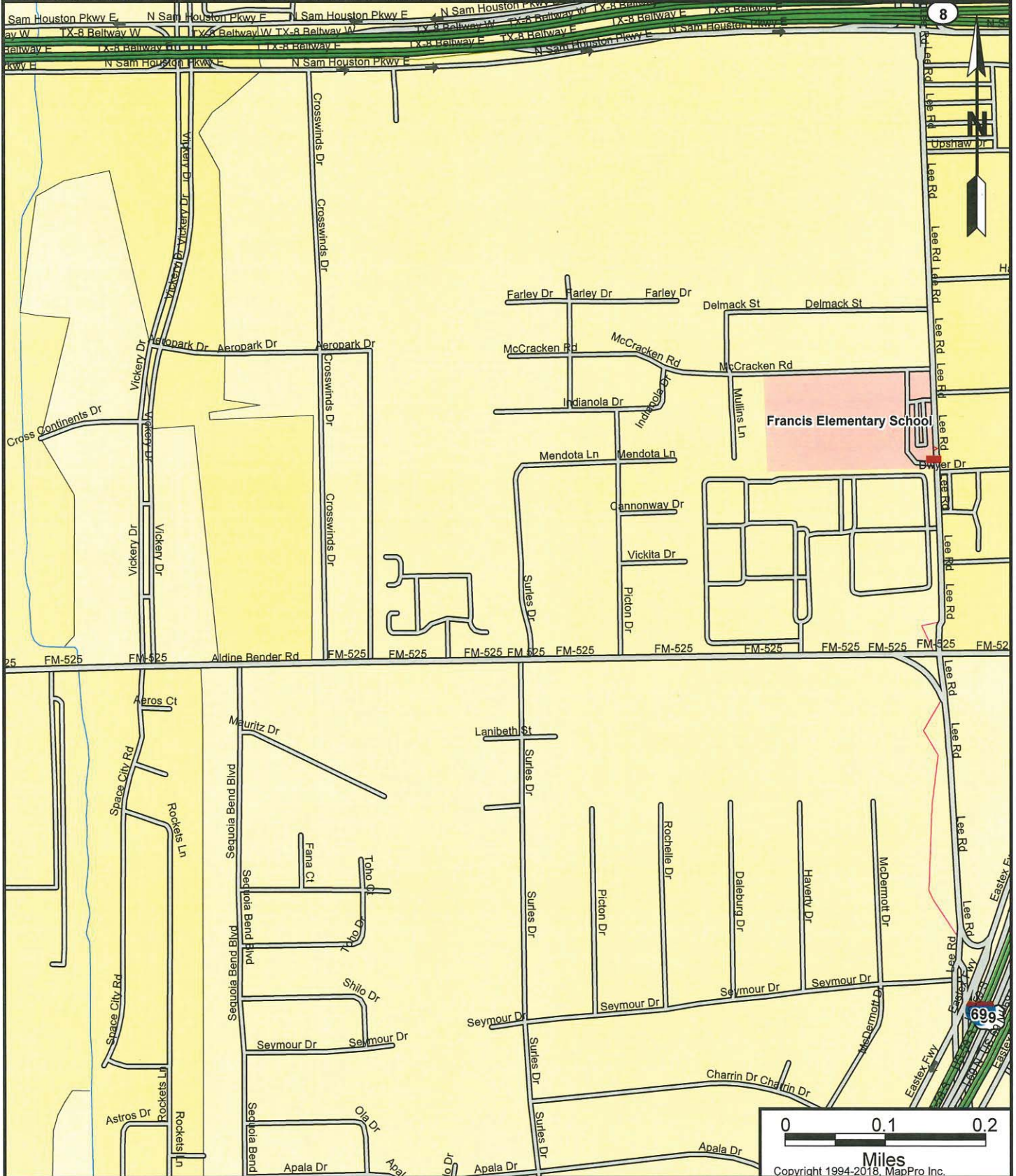
Inaccuracies may exist on map such as missing, incorrectly drawn, or incorrectly addressed streets. Please report any such inaccuracy to MapPro, Inc. so that appropriate corrections can be made.

LOCATION MAP

Description: ABANDONMENT AND FLOW DIVERSION OF INTERWOOD, MUD #266 AND VICKERY LIFT STATIONS PROJECT

WBS# R-000267-121B-2-01; Council District B and ETJ; Key Map(s) 374Y and 374Z

Prepared by: City of Houston, 611 Walker, 19th Floor, Houston, TX 77002



CAUTION:

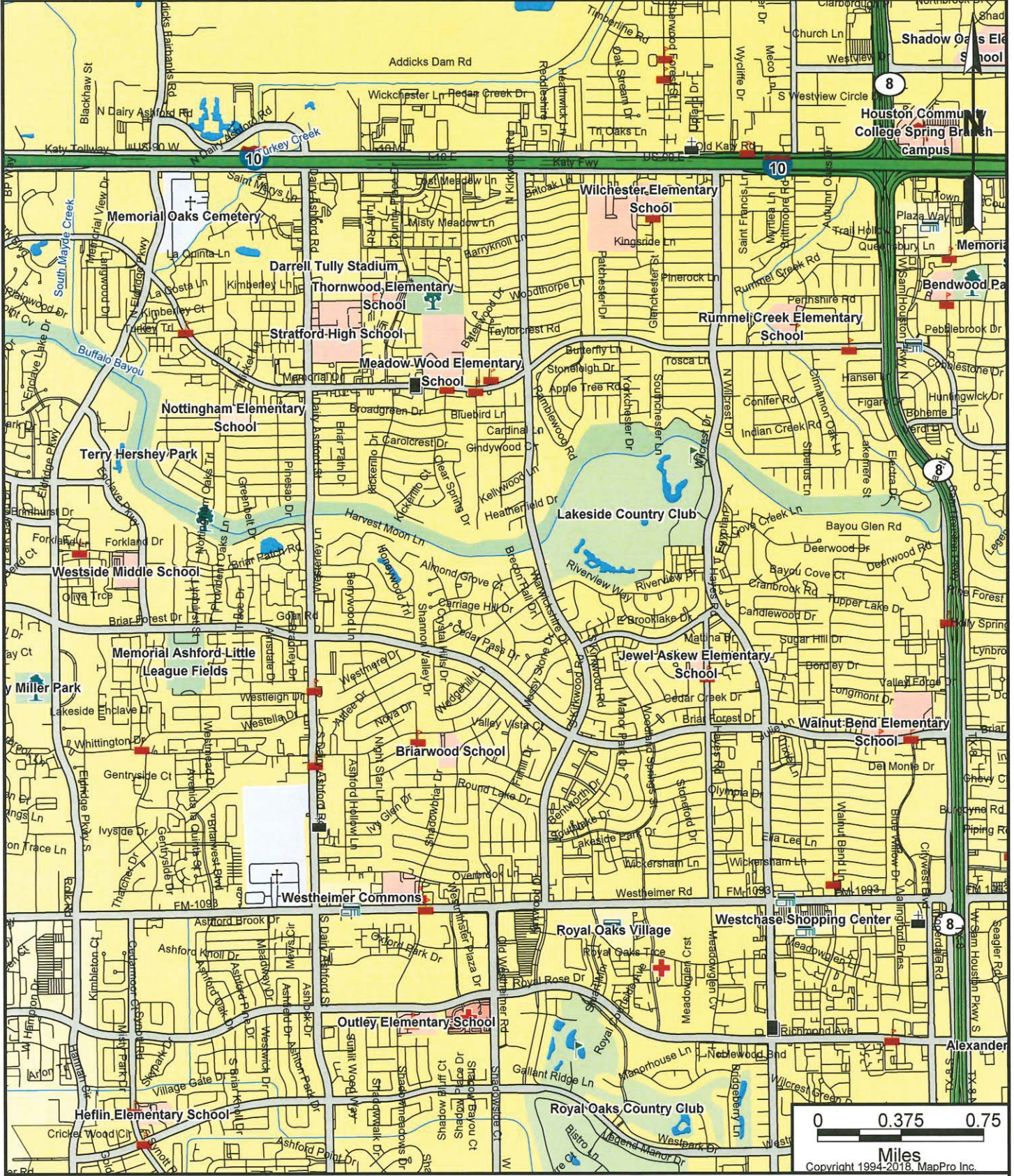
Inaccuracies may exist on map such as missing, incorrectly drawn, or incorrectly addressed streets. Please report any such inaccuracy to MapPro, Inc. so that appropriate corrections can be made.

LOCATION MAP

Description: ACQUISITION OF REAL ESTATE FOR DIVERSION AND ABANDONMENT OF
KIRKWOOD #3 LIFT STATION TO NEW HARVEST MOON LIFT STATION

WBS# R-000536-0021-2; Council District G; Key Map 489J

Prepared by: City of Houston, 611 Walker, 19th Floor, Houston, TX 77002



CAUTION:

Inaccuracies may exist on map such as missing, incorrectly drawn, or incorrectly addressed streets. Please report any such inaccuracy to MapPro, Inc. so that appropriate corrections can be made.

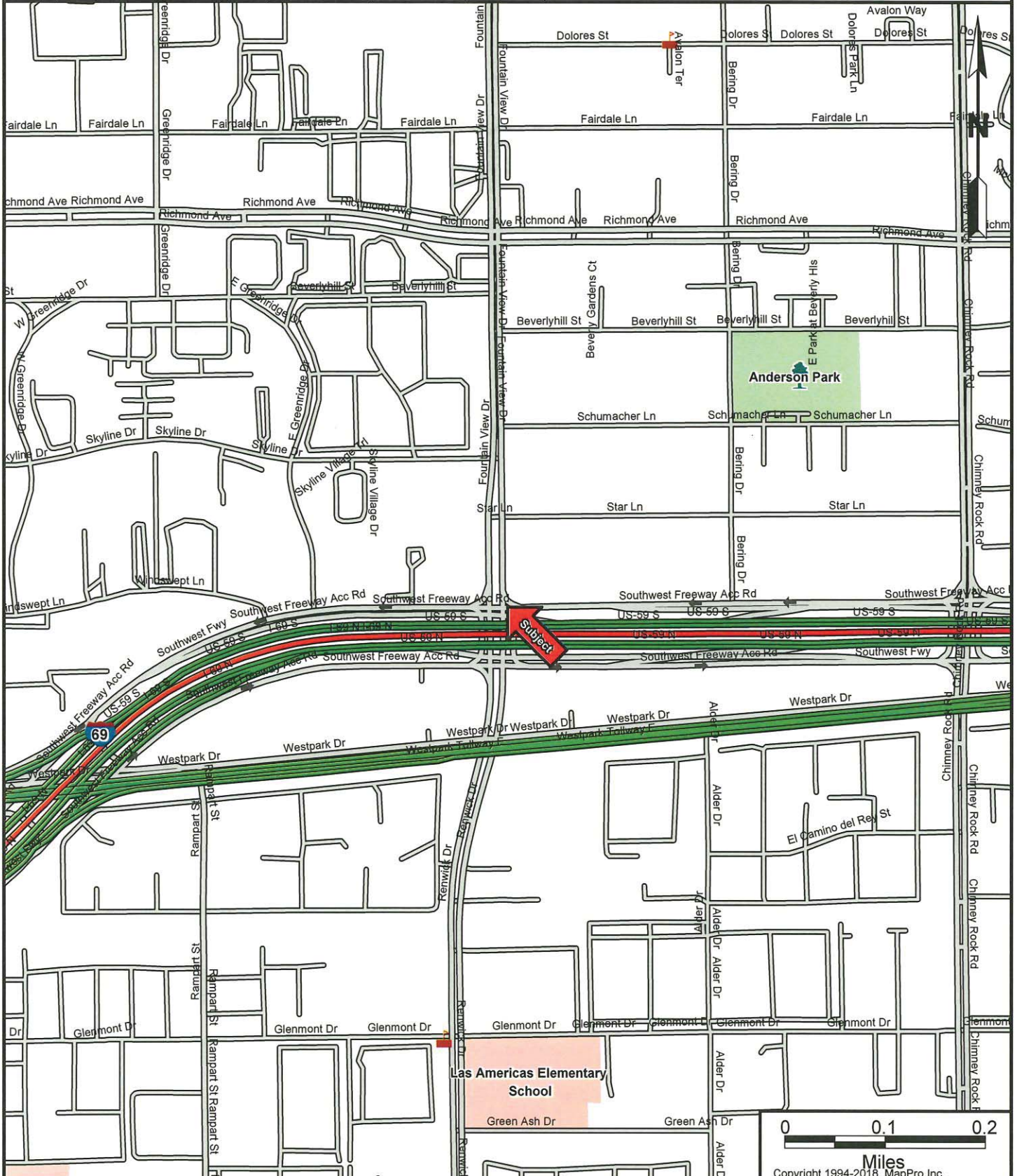
LOCATION MAP

Description: FOUNTAIN VIEW REGIONAL LIFT STATION CONSTRUCTION

WBS# R-000536-0023-2-01; Council District J; Key Map 491

Subject Address: , Houston, TX 77057

Prepared by: City of Houston, 611 Walker, 19th Floor, Houston, TX 77002



CAUTION:

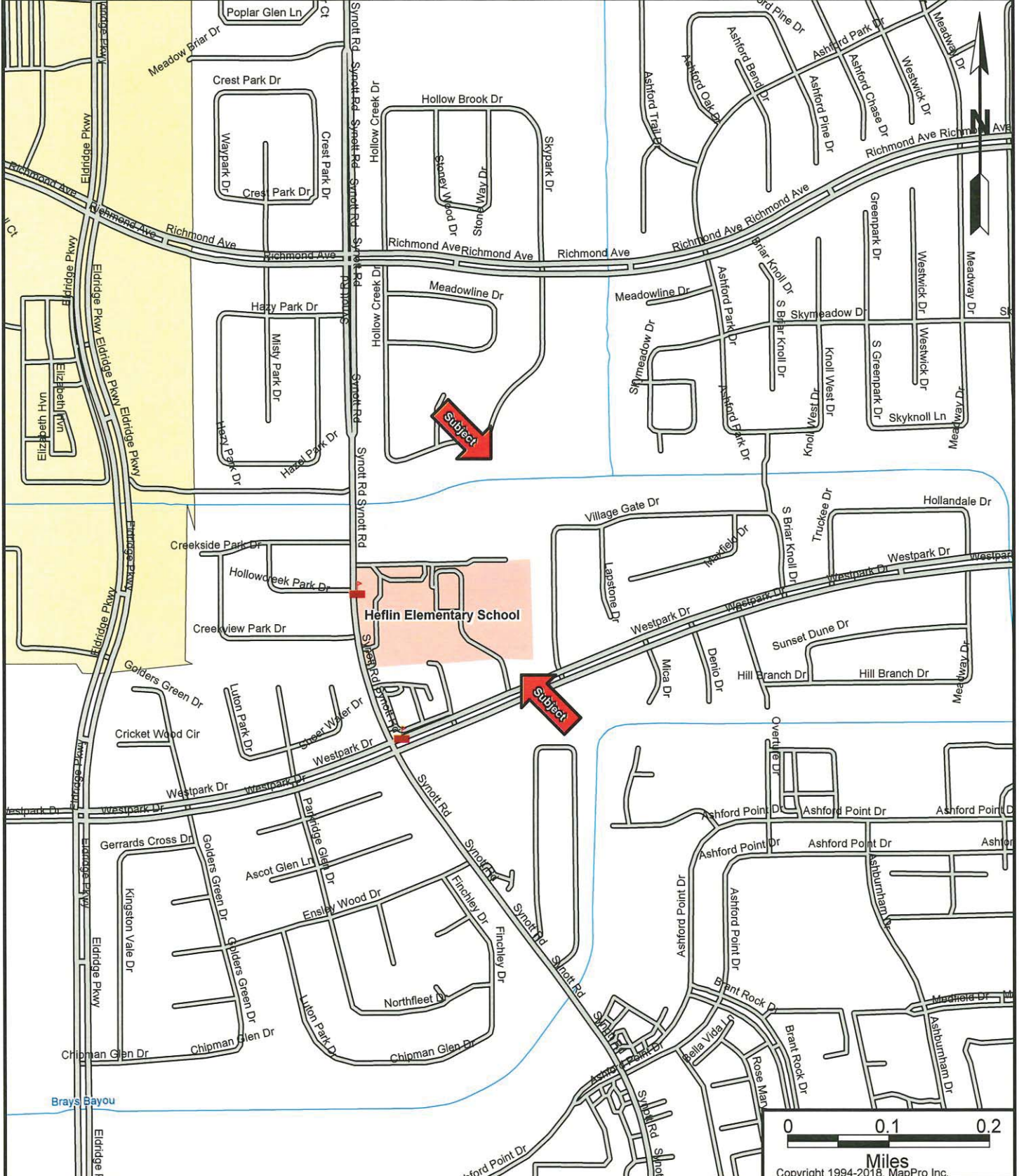
The location of property arrows shown on this map are approximate only. Inaccuracies may exist on map such as missing, incorrectly drawn, or incorrectly addressed streets. Please report any such inaccuracy to MapPro, Inc. so that appropriate corrections can be made.

LOCATION MAP

Description: FACILITIES CONSOLIDATION: CHELFORD CITY DIVERSION PACKAGE 1 LIFT STATION PROJECT
WBS# R-000536-0024-2; Council District F; Key Map 488Y

Subject Address: , Houston, TX 77082

Prepared by: City of Houston, 611 Walker, 19th Floor, Houston, TX 77002



CAUTION:

The location of property arrows shown on this map are approximate only. Inaccuracies may exist on map such as missing, incorrectly drawn, or incorrectly addressed streets. Please report any such inaccuracy to MapPro, Inc. so that appropriate corrections can be made.

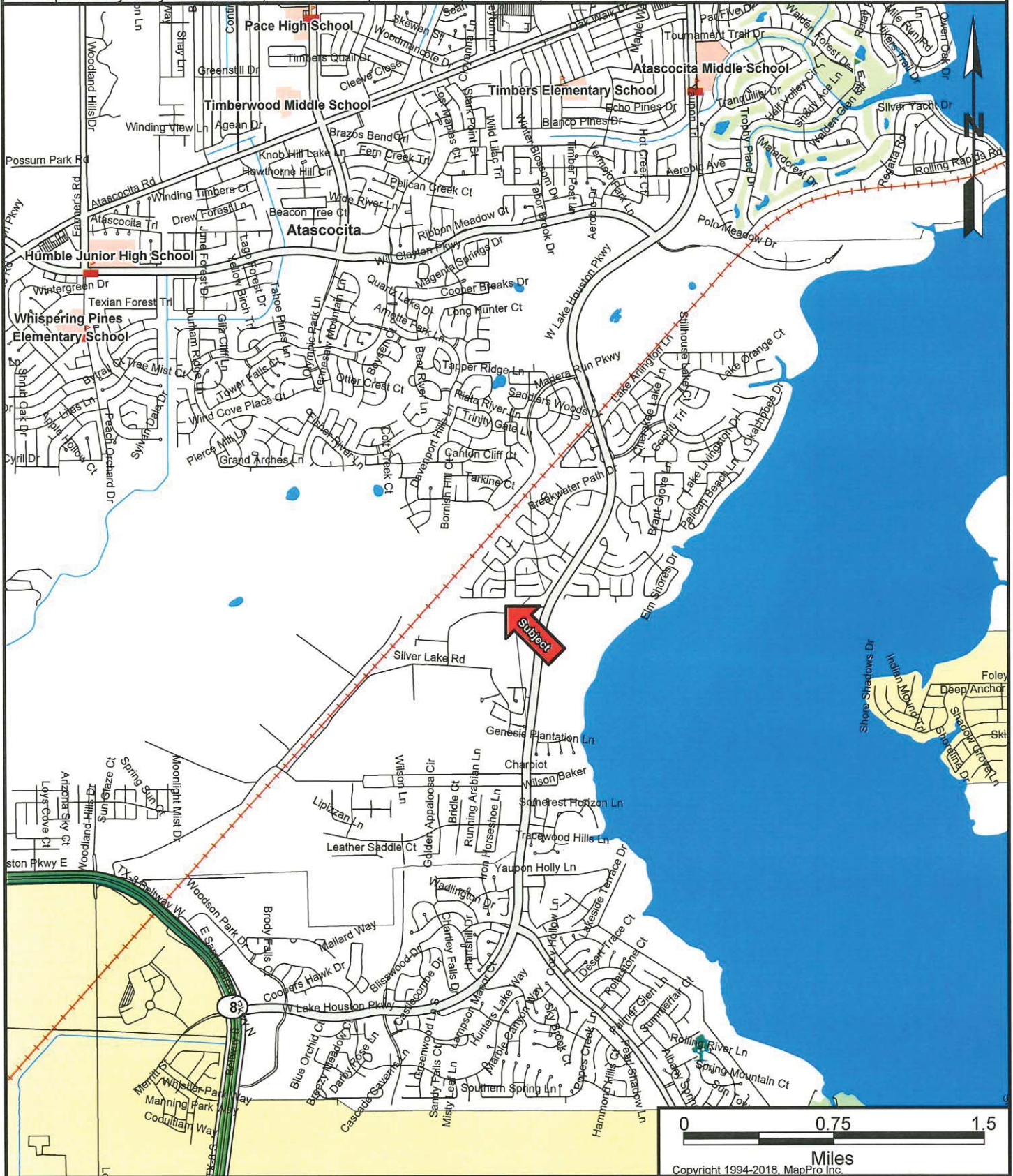
LOCATION MAP

Description: Description : West Lake Housotn Parkway Lift Station (MUD#499)

WBS R-090534-0001-2-01

Subject Address: 13111 Sweetgum Shores Dr, Atascocita, TX 77044

Prepared by: City of Houston, 611 Walker, 19th Floor, Houston, TX 77002

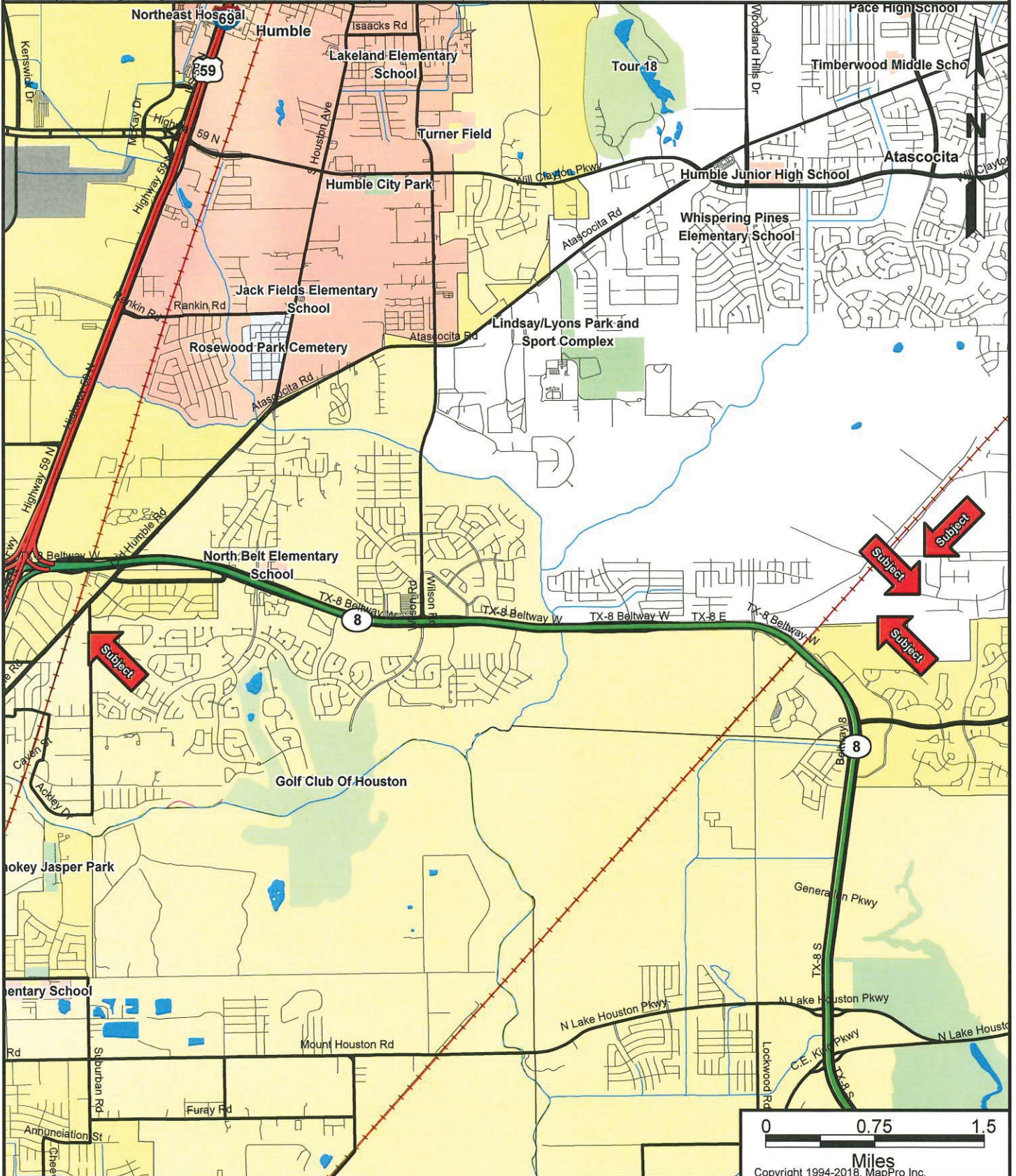


CAUTION:

The location of property arrows shown on this map are approximate only. Inaccuracies may exist on map such as missing, incorrectly drawn, or incorrectly addressed streets. Please report any such inaccuracy to MapPro, Inc. so that appropriate corrections can be made.

LOCATION MAP

Description: Northeast Water Purification Plant 320 MGD Expansion
WBS #S-00066-0019-2-01; Council District E; Key Maps 377S
Subject Address: , Houston, TX 77044
Prepared by: City of Houston, 611 Walker, 19th Floor, Houston, TX 77002

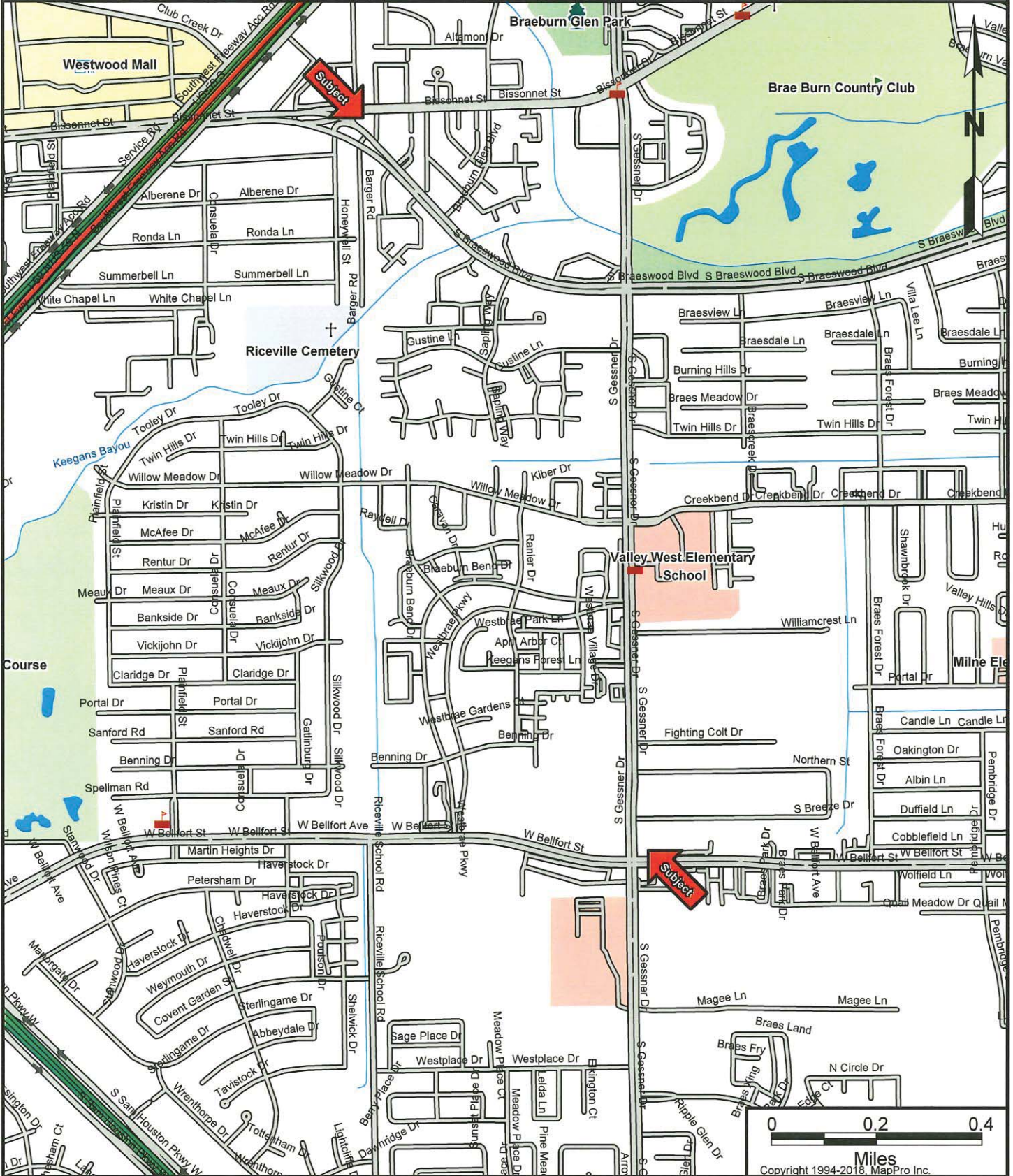


CAUTION:

The location of property arrows shown on this map are approximate only. Inaccuracies may exist on map such as missing, incorrectly drawn, or incorrectly addressed streets. Please report any such inaccuracy to MapPro, Inc. so that appropriate corrections can be made.

LOCATION MAP

Description: 42-Inch Water Line from W Belfort Ave to Bissonnet St along Braes Forest Dr
 WBS #S-000900-0112-2; Council District J,K; Key Map 530B and X,Y,W,N,E,S
 Subject Address: , Houston, TX 77074
 Prepared by: City of Houston, 611 Walker, 19th Floor, Houston, TX 77002



CAUTION:

The location of property arrows shown on this map are approximate only. Inaccuracies may exist on map such as missing, incorrectly drawn, or incorrectly addressed streets. Please report any such inaccuracy to MapPro, Inc. so that appropriate corrections can be made.

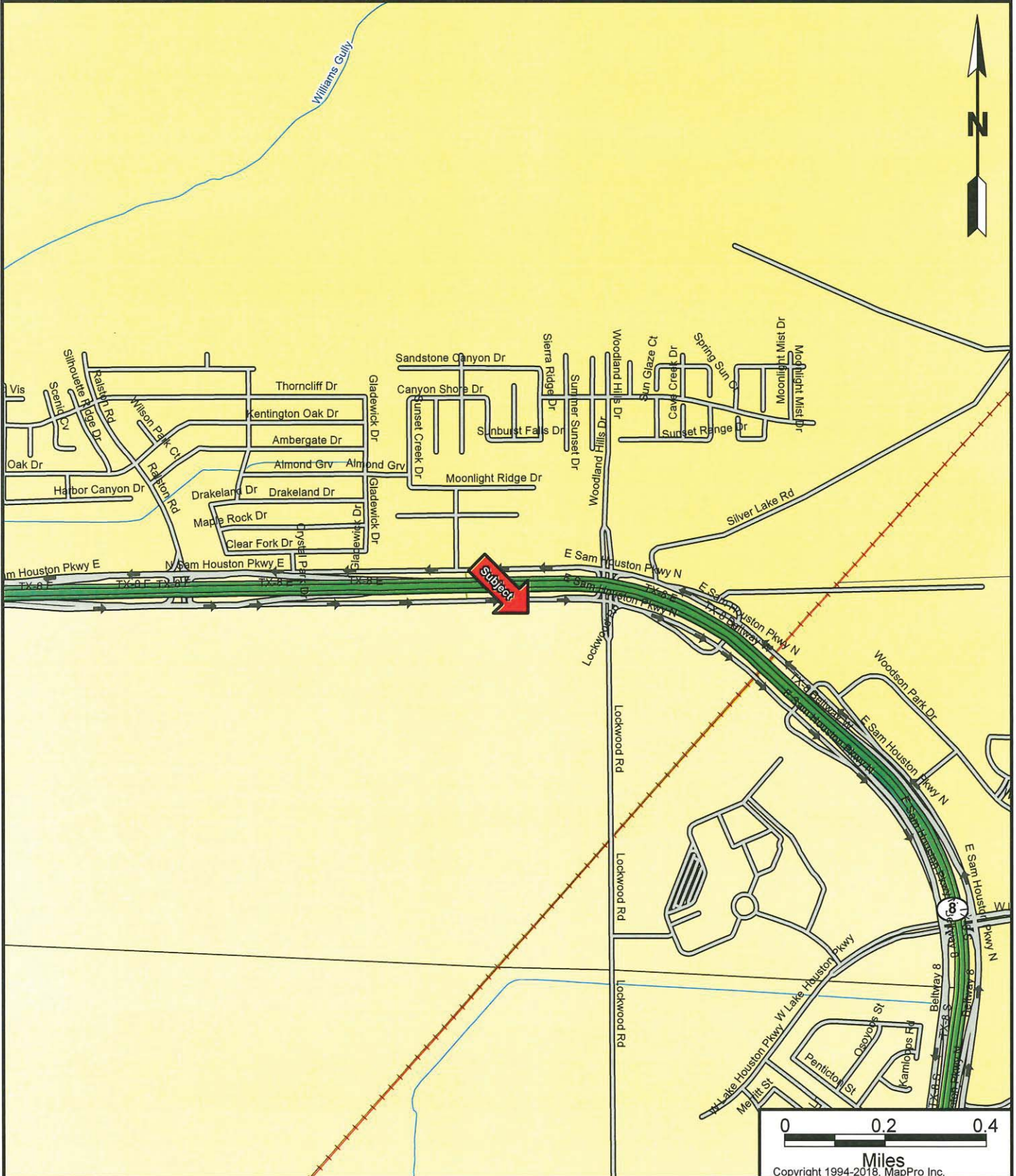
LOCATION MAP

Description: 108-inch Waterline Along City Easements (from UPRR to John Ralston)

WBS S-000900-0154-2; Parcels AY17-363 & AY17-364; Council District E; Key Map 376Y

Subject Address: , Houston, TX 77044

Prepared by: City of Houston, 611 Walker, 19th Floor, Houston, TX 77002



CAUTION:

The location of property arrows shown on this map are approximate only. Inaccuracies may exist on map such as missing, incorrectly drawn, or incorrectly addressed streets. Please report any such inaccuracy to MapPro, Inc. so that appropriate corrections can be made.