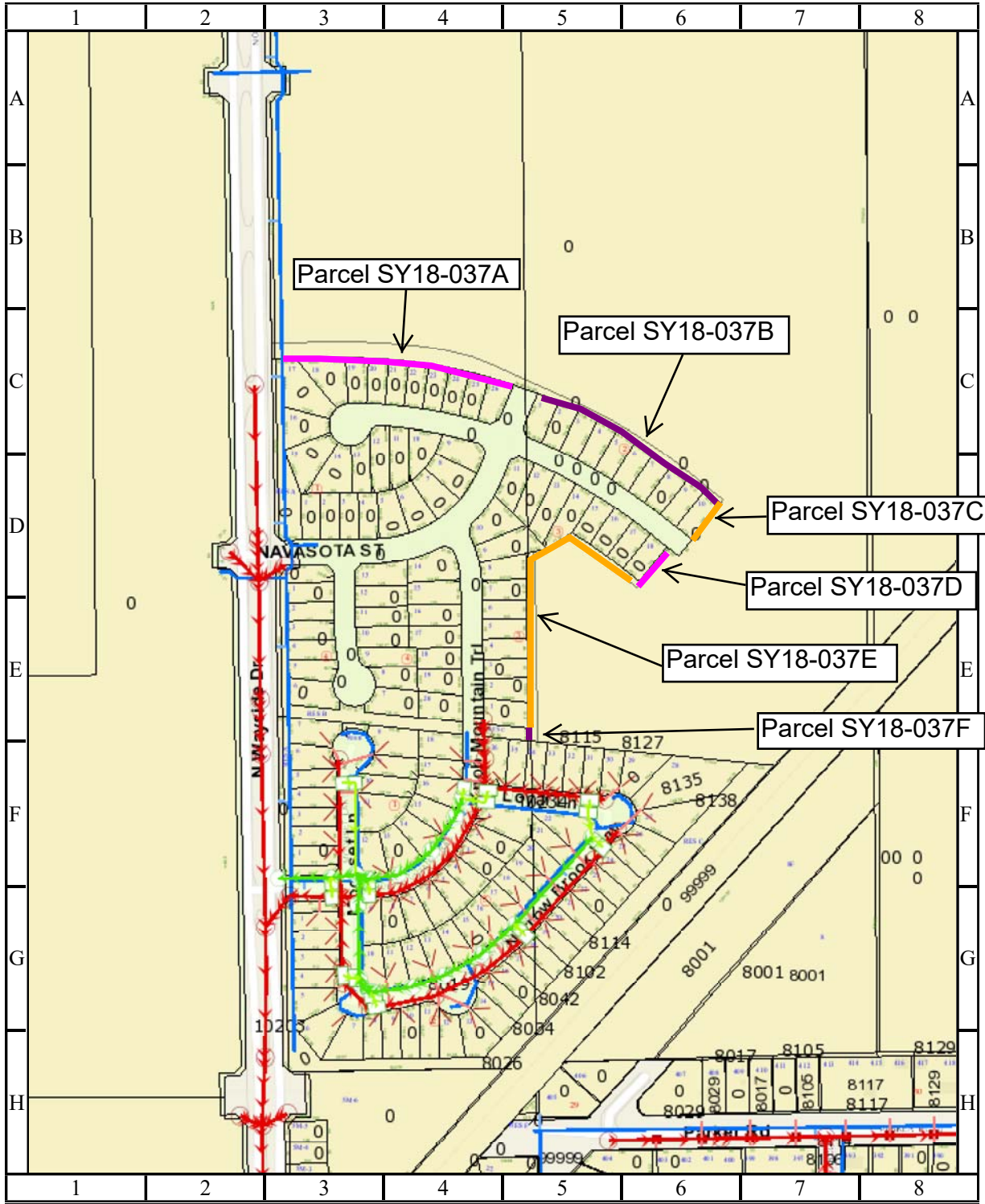


Subject: Abandonment and sale of four 14 foot-wide utility easements and two 10 foot-wide utility easements, all located within the Wayside Village Subdivision, Section 2, out of the Eli Noland Survey, A-600. **Parcels SY18-037A through SY18-037F**



CITY OF HOUSTON

Department of Public Works and Engineering
 Geographic Information & Management System (GIMS)
 1 inch = 105 feet

DISCLAIMER: THIS MAP REPRESENTS THE BEST INFORMATION AVAILABLE TO THE CITY.
 THE CITY DOES NOT WARRANT ITS ACCURACY OR COMPLETENESS.
 FIELD VERIFICATIONS SHOULD BE DONE AS NECESSARY.

