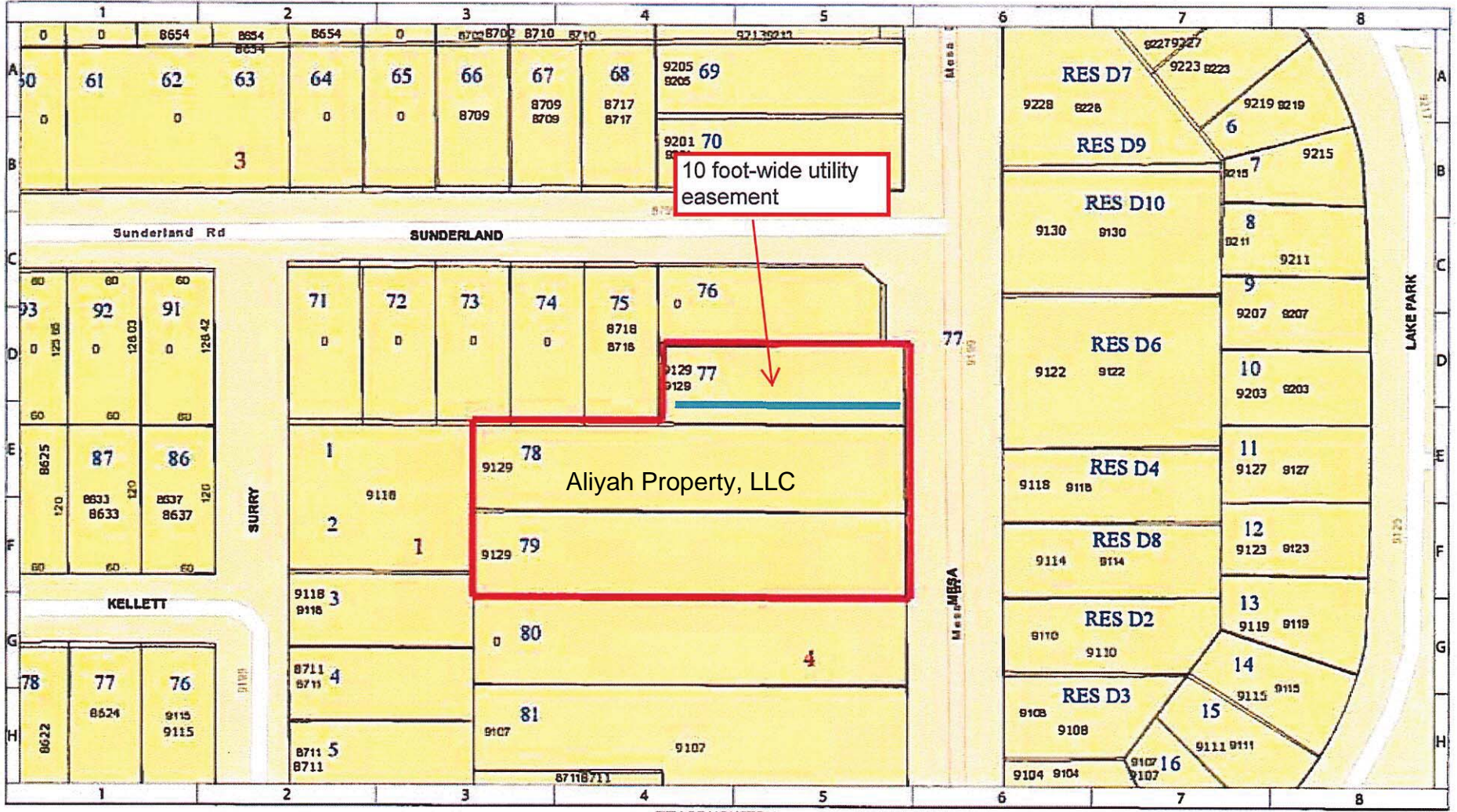


Subject: Abandonment and sale of a 10 foot-wide utility easement, located within Unrestricted Reserve A of the Mesa Development Subdivision, out of the Eli Noland Survey, A-600. **Parcel SY17-055**



CITY OF HOUSTON
 Department of Public Works and Engineering
 Geographic Information & Management System (GIMS)
 DISCLAIMER: THIS MAP REPRESENTS THE BEST INFORMATION AVAILABLE TO THE CITY.
 THE CITY DOES NOT WARRANT ITS ACCURACY OR COMPLETENESS.
 FIELD VERIFICATIONS SHOULD BE DONE AS NECESSARY.



- 10- foot-wide Utility easement requested to be abandoned
- Property Line