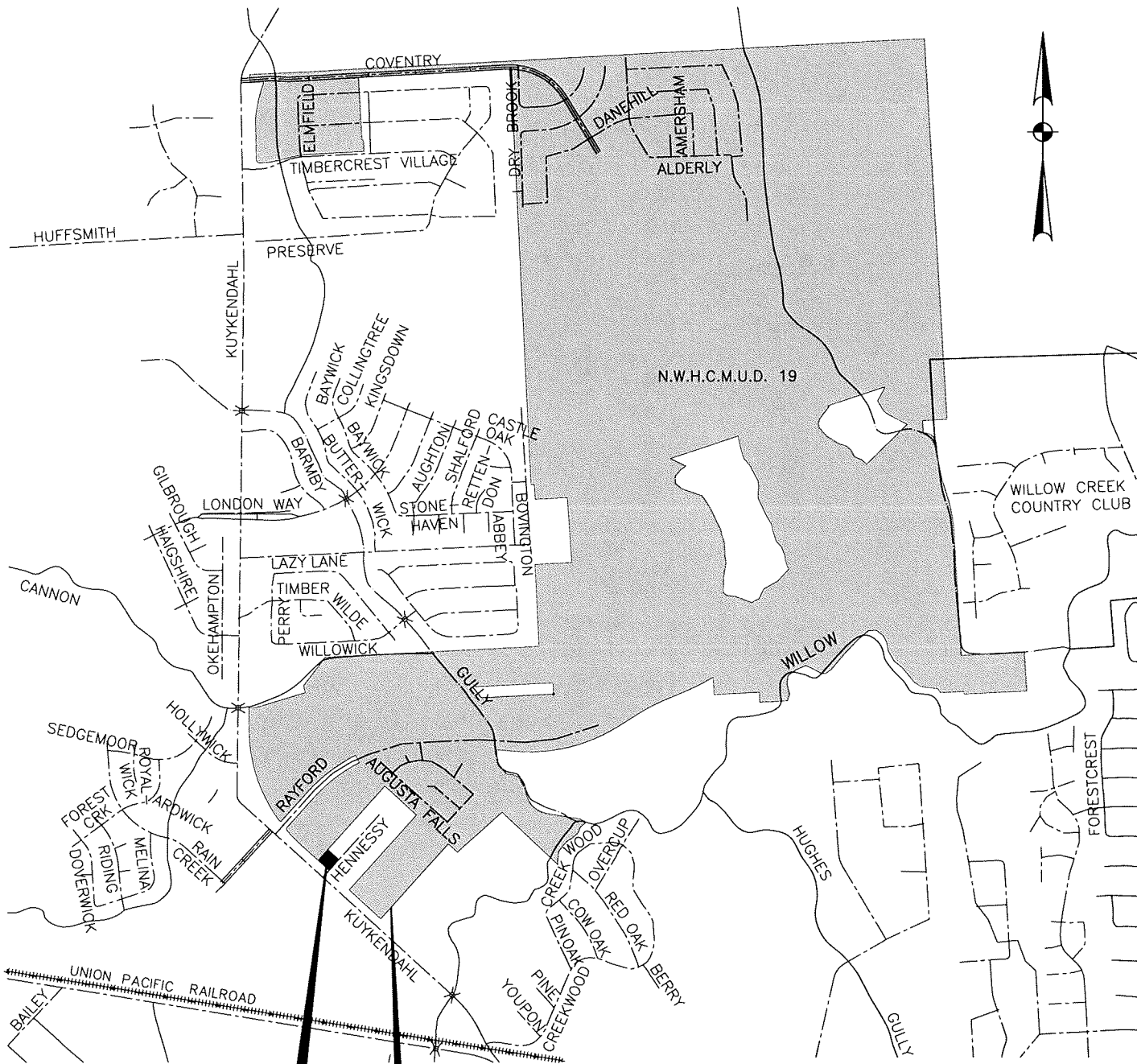


L:\3201\_NWHCMUD\_19\03201\_405\_13732 ACRES ANNEXATION\CAD\EXHIBITS\2.374AC VICINITY MAP.DWG May. 4, 2017-4:01 PM KYLE CLAWSON



N.W.H.C.M.U.D. No.19  
VICINITY MAP

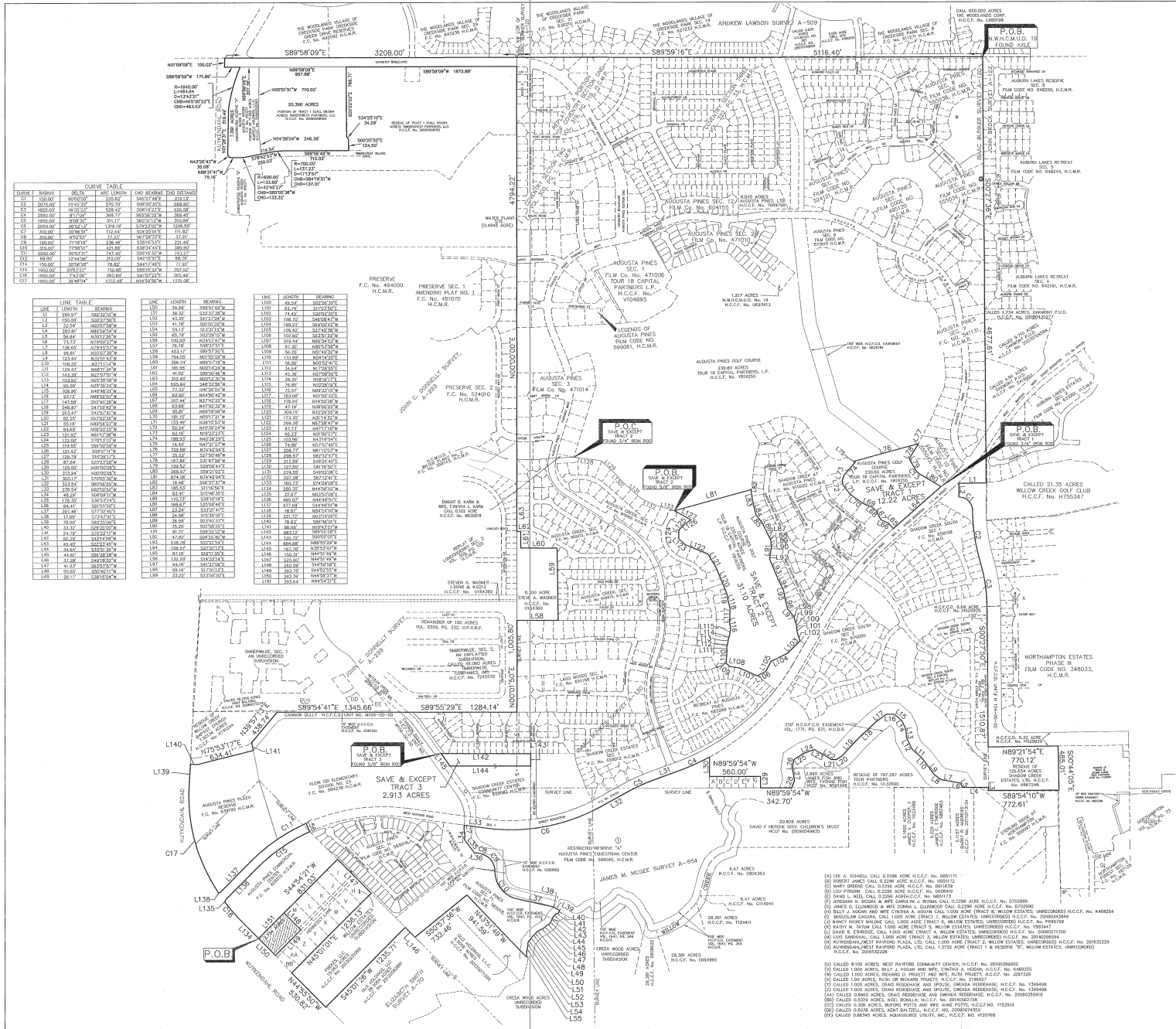
ANNEXATION TRACT  
2.374 ACRES

N.W.H.C.M.U.D. 19  
BOUNDARY



16340 Park Ten Place  
Suite 350  
Houston, Texas 77084  
(713) 461-9600

TEXAS FIRM REGISTRATION NO. F-487  
DATE: MAY, 2017 SCALE: N.T.S.



**CURVE TABLE**

CHORD BEARING	CHORD DISTANCE	ARC BEARING	ARC DISTANCE
01	100.000	90.000	100.000
02	100.000	90.000	100.000
03	100.000	90.000	100.000
04	100.000	90.000	100.000
05	100.000	90.000	100.000
06	100.000	90.000	100.000
07	100.000	90.000	100.000
08	100.000	90.000	100.000
09	100.000	90.000	100.000
10	100.000	90.000	100.000
11	100.000	90.000	100.000
12	100.000	90.000	100.000
13	100.000	90.000	100.000
14	100.000	90.000	100.000
15	100.000	90.000	100.000
16	100.000	90.000	100.000
17	100.000	90.000	100.000
18	100.000	90.000	100.000
19	100.000	90.000	100.000
20	100.000	90.000	100.000
21	100.000	90.000	100.000
22	100.000	90.000	100.000
23	100.000	90.000	100.000
24	100.000	90.000	100.000
25	100.000	90.000	100.000
26	100.000	90.000	100.000
27	100.000	90.000	100.000
28	100.000	90.000	100.000
29	100.000	90.000	100.000
30	100.000	90.000	100.000
31	100.000	90.000	100.000
32	100.000	90.000	100.000
33	100.000	90.000	100.000
34	100.000	90.000	100.000
35	100.000	90.000	100.000
36	100.000	90.000	100.000
37	100.000	90.000	100.000
38	100.000	90.000	100.000
39	100.000	90.000	100.000
40	100.000	90.000	100.000
41	100.000	90.000	100.000
42	100.000	90.000	100.000
43	100.000	90.000	100.000
44	100.000	90.000	100.000
45	100.000	90.000	100.000
46	100.000	90.000	100.000
47	100.000	90.000	100.000
48	100.000	90.000	100.000
49	100.000	90.000	100.000
50	100.000	90.000	100.000
51	100.000	90.000	100.000
52	100.000	90.000	100.000
53	100.000	90.000	100.000
54	100.000	90.000	100.000
55	100.000	90.000	100.000
56	100.000	90.000	100.000
57	100.000	90.000	100.000
58	100.000	90.000	100.000
59	100.000	90.000	100.000
60	100.000	90.000	100.000
61	100.000	90.000	100.000
62	100.000	90.000	100.000
63	100.000	90.000	100.000
64	100.000	90.000	100.000
65	100.000	90.000	100.000
66	100.000	90.000	100.000
67	100.000	90.000	100.000
68	100.000	90.000	100.000
69	100.000	90.000	100.000
70	100.000	90.000	100.000
71	100.000	90.000	100.000
72	100.000	90.000	100.000
73	100.000	90.000	100.000
74	100.000	90.000	100.000
75	100.000	90.000	100.000
76	100.000	90.000	100.000
77	100.000	90.000	100.000
78	100.000	90.000	100.000
79	100.000	90.000	100.000
80	100.000	90.000	100.000
81	100.000	90.000	100.000
82	100.000	90.000	100.000
83	100.000	90.000	100.000
84	100.000	90.000	100.000
85	100.000	90.000	100.000
86	100.000	90.000	100.000
87	100.000	90.000	100.000
88	100.000	90.000	100.000
89	100.000	90.000	100.000
90	100.000	90.000	100.000
91	100.000	90.000	100.000
92	100.000	90.000	100.000
93	100.000	90.000	100.000
94	100.000	90.000	100.000
95	100.000	90.000	100.000
96	100.000	90.000	100.000
97	100.000	90.000	100.000
98	100.000	90.000	100.000
99	100.000	90.000	100.000
100	100.000	90.000	100.000

**LINE TABLE**

LINE	BEARING	DISTANCE	LINE	BEARING	DISTANCE
L1	S89°58'09\"/>				

**LEGENDS OF AUGUSTA PINES**

LINE	BEARING	DISTANCE	LINE	BEARING	DISTANCE
L101	S89°58'09\"/>				



- NOTES:**
1. ALL BEARINGS REFERENCED TO N.W.H.C.M.U.D. 19 BOUNDARY MAP PREPARED BY SANDERS ENGINEERING CORPORATION.
  2. P.O.C. INDICATES POINT OF COMMENCING. FOR INDICATES POINT OF BEGINNING. H.C.C.F. NO. INDICATES HARRIS COUNTY CLERK'S FILE NUMBER. H.C.M.R. INDICATES HARRIS COUNTY MAP RECORDS. H.C.D.R. INDICATES HARRIS COUNTY DEED RECORDS. F.C.N. INDICATES FILE CODE NUMBER.
  3. A METES AND BOUNDS DESCRIPTION OF THE SUBJECT TRACT HAS BEEN PREPARED BY MILLER SURVEY GROUP AND ACCOMPANIES THIS EXHIBIT.

EXECUTED, AFFIRMED AND ACKNOWLEDGED BY THE UNDERSIGNED MEMBERS OF THE BOARD OF DIRECTORS OF NORTHWEST HARRIS COUNTY MUNICIPAL UTILITY DISTRICT NUMBER 19, HARRIS COUNTY, TEXAS, PURSUANT TO SECTION 49-055 (6), TEXAS WATER CODE (AMENDED).

**DIRECTORS:**

- PRESIDENT \_\_\_\_\_
- VICE PRESIDENT \_\_\_\_\_
- ASSISTANT VICE PRESIDENT \_\_\_\_\_
- SECRETARY \_\_\_\_\_
- ASSISTANT SECRETARY \_\_\_\_\_

STATE OF TEXAS  
COUNTY OF HARRIS

BEFORE ME, THE UNDERSIGNED, ON THIS DAY PERSONALLY APPEARED \_\_\_\_\_, THE PERSONS WHOSE NAMES ARE SUBSCRIBED ABOVE, AND AFFIRMED AND ACKNOWLEDGED THAT THEY EXECUTED THE SAME IN THE CAPACITY THEREIN STATED.

GIVEN UNDER MY HAND AND SEAL OF OFFICE, THIS \_\_\_\_ DAY OF \_\_\_\_\_ 2017.

NOTARY PUBLIC IN AND FOR THE STATE OF TEXAS  
MY COMMISSION EXPIRES \_\_\_\_\_

I HEREBY CERTIFY THAT THIS DOCUMENT WAS PREPARED UNDER 22TAC63.21, DOES NOT REFLECT THE RESULTS OF AN O.N. ON THE GROUND SURVEY, AND IS NOT TO BE USED TO CONVEY OR ESTABLISH INTERESTS IN REAL PROPERTY EXCEPT THOSE RIGHTS AND INTERESTS IMPLIED OR ESTABLISHED BY THE CREATOR OR RECONFIGURATION OF THE BOUNDARY OF THE POLITICAL SUBDIVISION FOR WHICH IT WAS PREPARED.

DATED THIS 23RD DAY OF MARCH, 2017.

*Cardyn J. Egan*  
CARDYN J. EGAN, R.P.L.S.  
TEXAS REGISTRATION NO. 62333  
JARDINE@MILLERSURVEY.COM



**NORTHWEST HARRIS COUNTY MUNICIPAL UTILITY DISTRICT No. 19 ANNEXATION TRACT 2.374 ACRES**

LOCATED IN THE ISAAC BUNKER SURVEY, ABSTRACT-120; THE JOHN C. DONNELLY SURVEY, ABSTRACT-233; THE JAMES M. MCCOY SURVEY, ABSTRACT-554; THE JOHN BROCK SURVEY, ABSTRACT-122; AND THE ELIZABETH SMITH SURVEY, ABSTRACT-70; HARRIS COUNTY, TEXAS

**MILLER SURVEY-GROUP**  
www.millersurvey.com  
1760 WEST SAM HOUSTON PARKWAY NORTH • HOUSTON, TEXAS 77043  
PHONE 713-413-1900 • FAX 713-413-1944  
TEXAS FIRM REGISTRATION NO. 504700

JOB NO: 1167    SCALE: 1"=500'    DRAWN BY: BEW    CHECKED BY: CJO    FIELD BOOK: N/A  
DWG. NO: M019-02M-03212017    DATE: 9-17-14    M&B NO: 177088