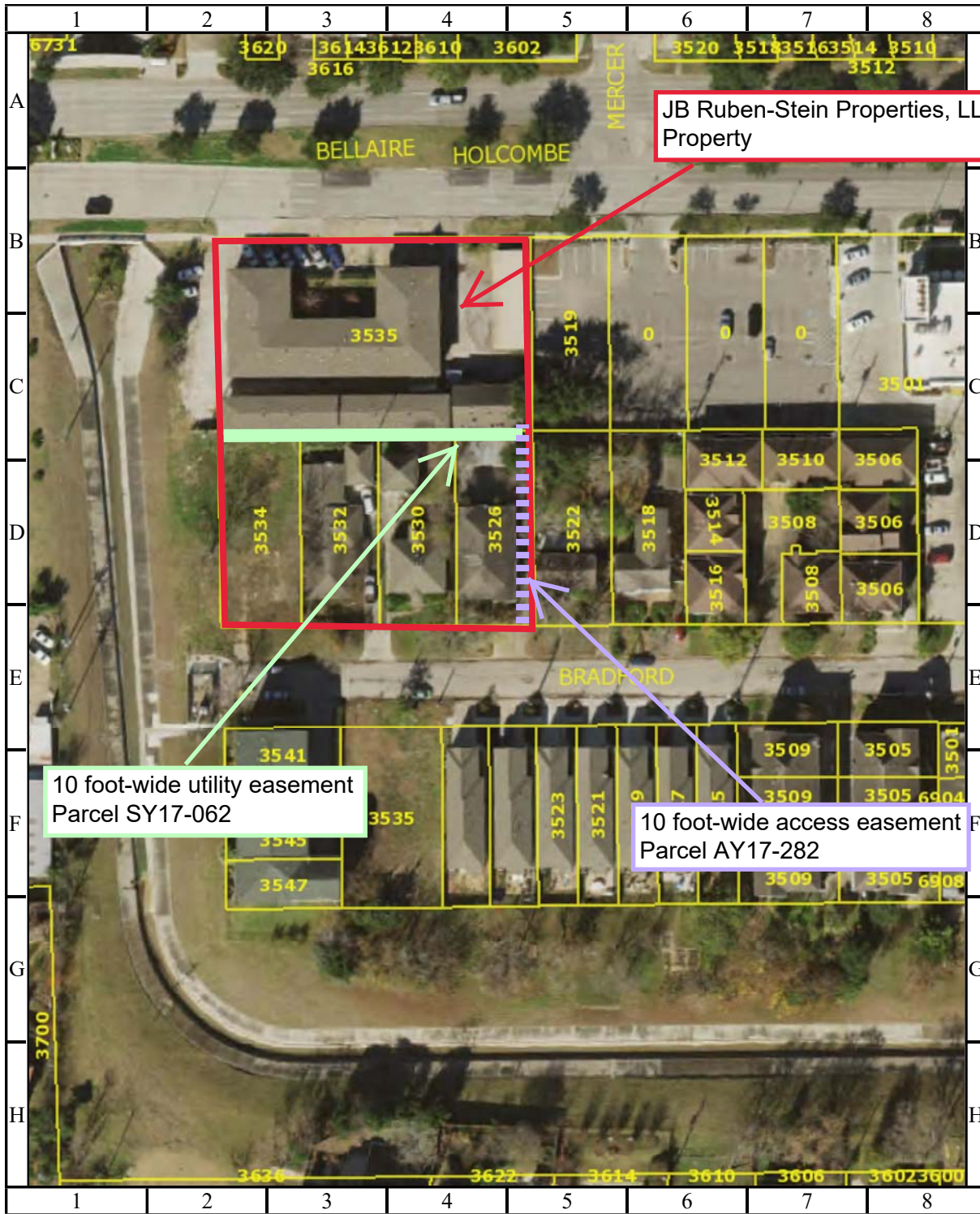


**Subject:** Abandonment and sale of a 10 foot-wide utility easement within Lots 18 through 21, Block 1, in exchange for conveyance to the City of a 10 foot-wide access easement within Lot 18, Block 1, both located within the Bradford Place Subdivision, out of the A.C. Reynolds Survey, A-61. **Parcels SY17-062 and AY17- 282**



**CITY OF HOUSTON**  
 Department of Public Works and Engineering  
 Geographic Information & Management System (GIMS)  
 1 inch = 29 feet

DISCLAIMER: THIS MAP REPRESENTS THE BEST INFORMATION AVAILABLE TO THE CITY.  
 THE CITY DOES NOT WARRANT ITS ACCURACY OR COMPLETENESS.  
 FIELD VERIFICATIONS SHOULD BE DONE AS NECESSARY.

