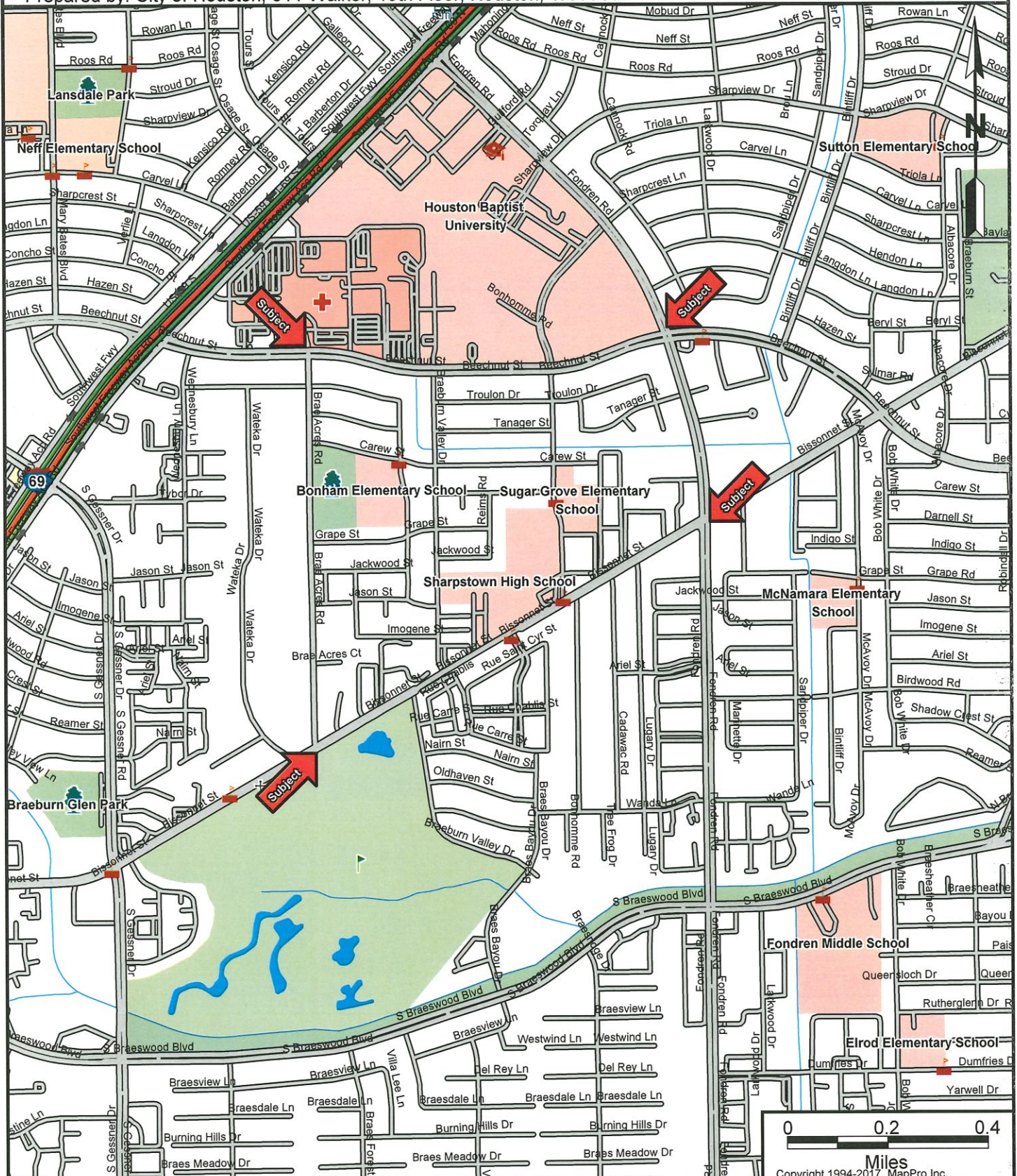


LOCATION MAP

Description: Sharpstown Area II Water Line Replacement Easement Acquisition
 WBS #S-000035-0194-2; Council District J; Key maps 530K,L,M,P, Q, R
 Subject Address: , Houston, TX 77074
 Prepared by: City of Houston, 611 Walker, 19th Floor, Houston, TX 77002



CAUTION: The location of property arrows shown on this map are approximate only. Inaccuracies may exist on map such as missing, incorrectly drawn, or incorrectly addressed streets. Please report any such inaccuracy to MapPro, Inc. so that appropriate corrections can be made.

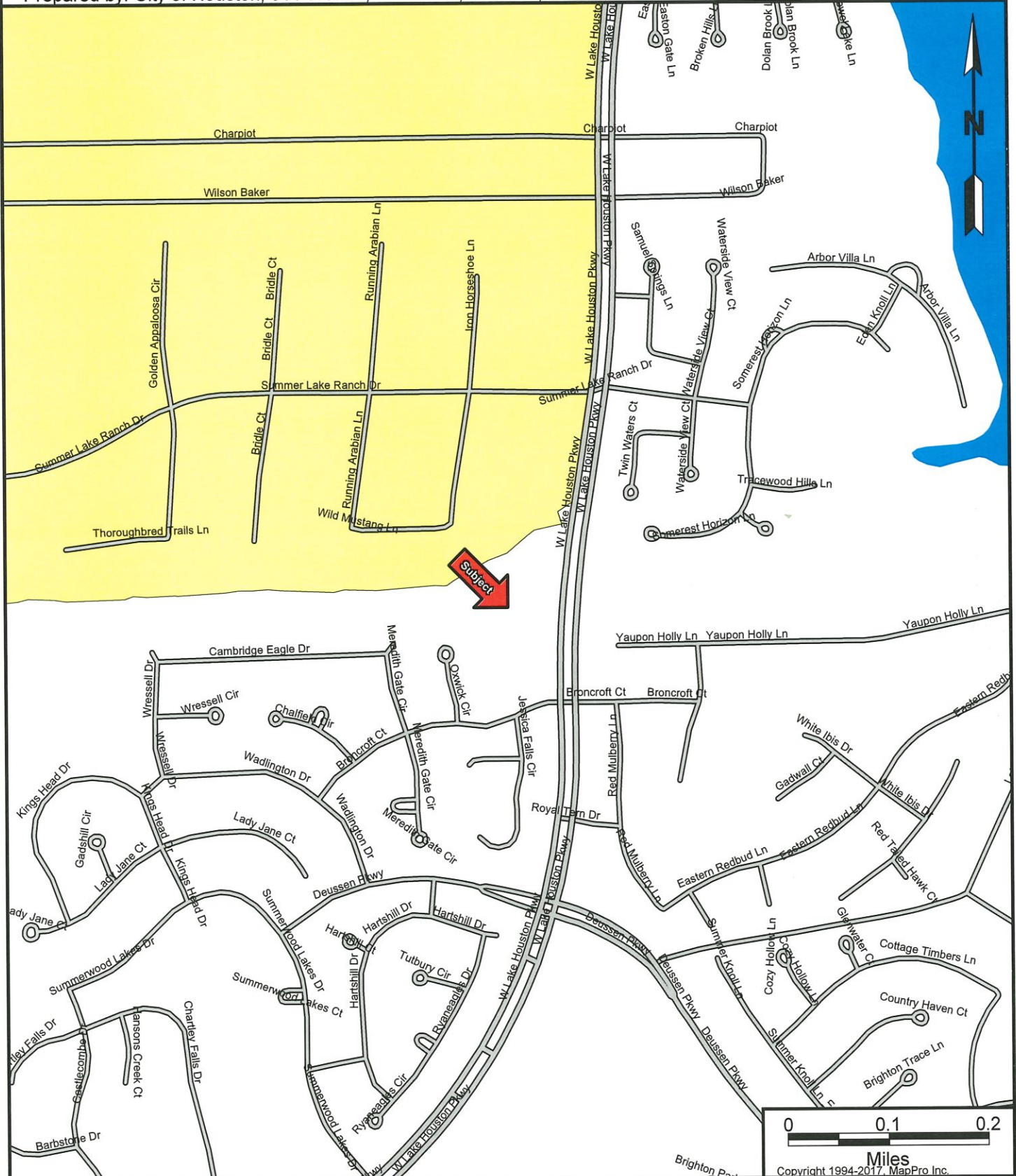
LOCATION MAP

Description: NORTHEAST WATER PURIFICATION PLANT EXPANSION EXPANSION (NEWPP)

WBS S-000065-0002-2; Council District ETJ; Key Map 377T

Subject Address: 13900 Rowboat Way, Houston, TX 77044

Prepared by: City of Houston, 611 Walker, 19th Floor, Houston, TX 77002

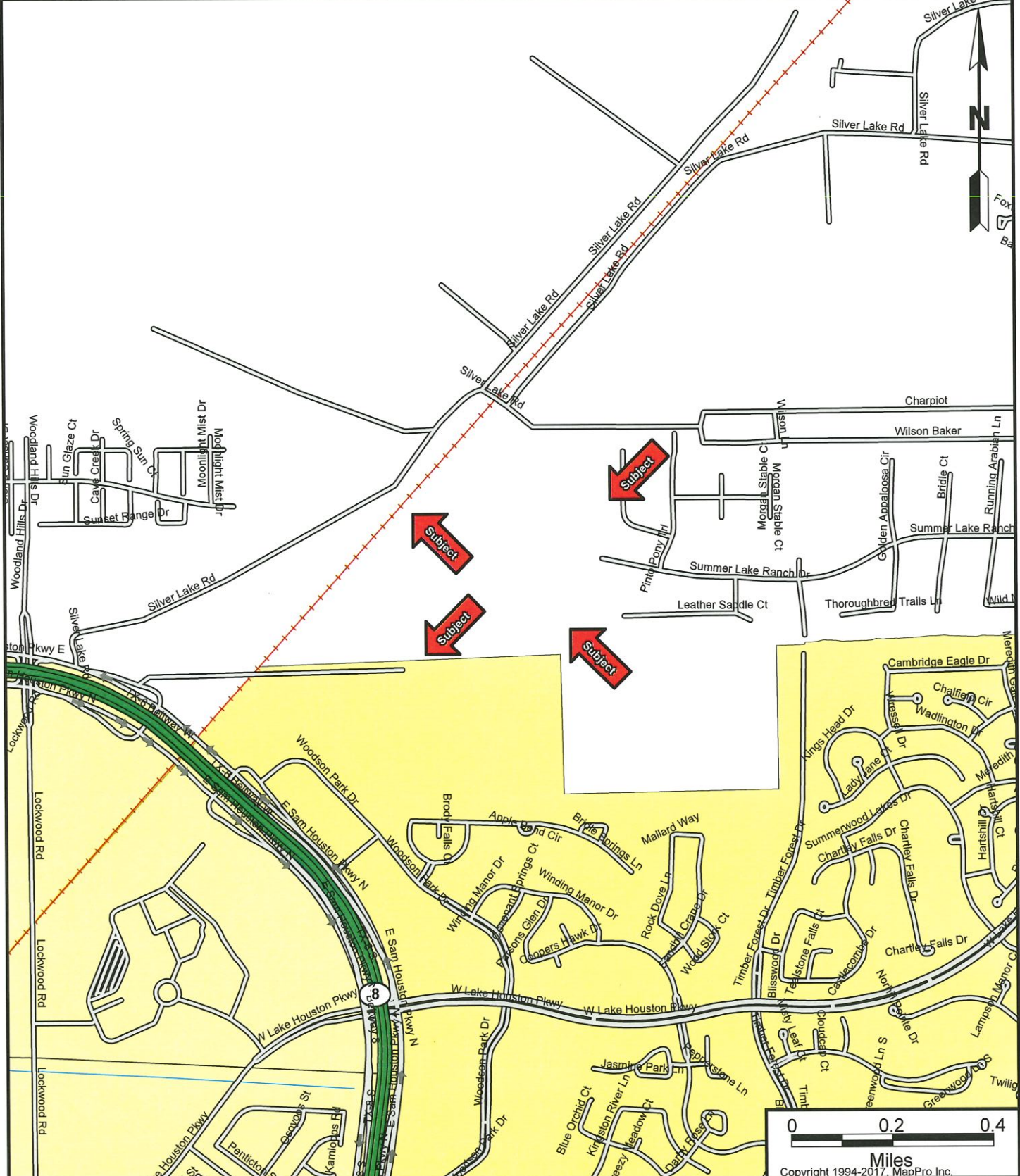


CAUTION:

The location of property arrows shown on this map are approximate only. Inaccuracies may exist on map such as missing, incorrectly drawn, or incorrectly addressed streets. Please report any such inaccuracy to MapPro, Inc. so that appropriate corrections can be made.

LOCATION MAP

Description: Northeast Water Purification Plant 320 MGD Expansion
 WBS S-000066-0019-2-01, Council District E, Kep Map 377S
 Subject Address: , Atascocita, TX 77044
 Prepared by: City of Houston, 611 Walker, 19th Floor, Houston, TX 77002

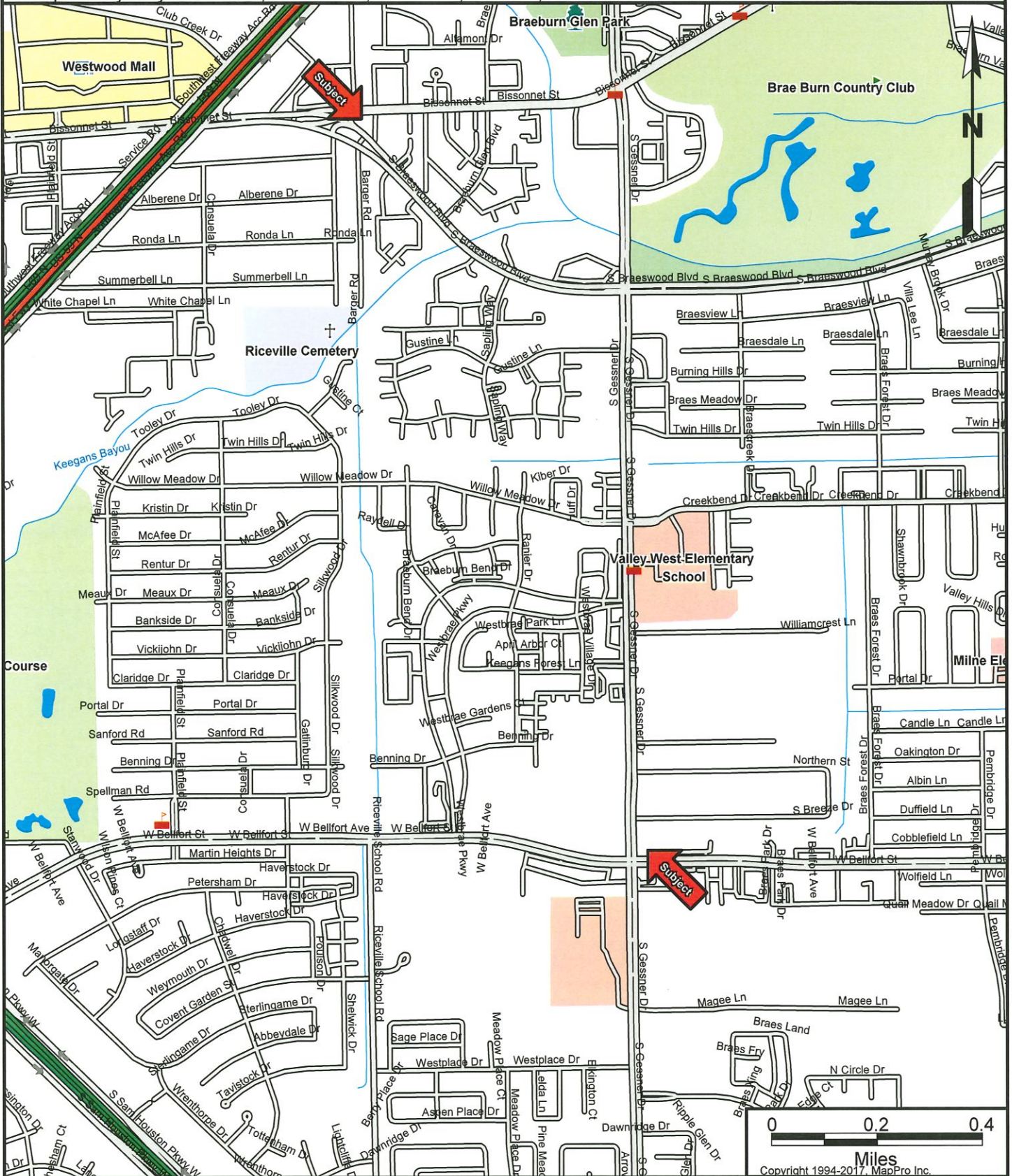


CAUTION:

The location of property arrows shown on this map are approximate only. Inaccuracies may exist on map such as missing, incorrectly drawn, or incorrectly addressed streets. Please report any such inaccuracy to MapPro, Inc. so that appropriate corrections can be made.

LOCATION MAP

Description: 42-Inch Water Line from W Belfort Ave to Bissonnet St along Braes Forest Dr
 WBS #S-000900-0112-2; Council District J,K; Key Map 530B and X,Y,W,N,E,S
 Subject Address: , Houston, TX 77074
 Prepared by: City of Houston, 611 Walker, 19th Floor, Houston, TX 77002



CAUTION:

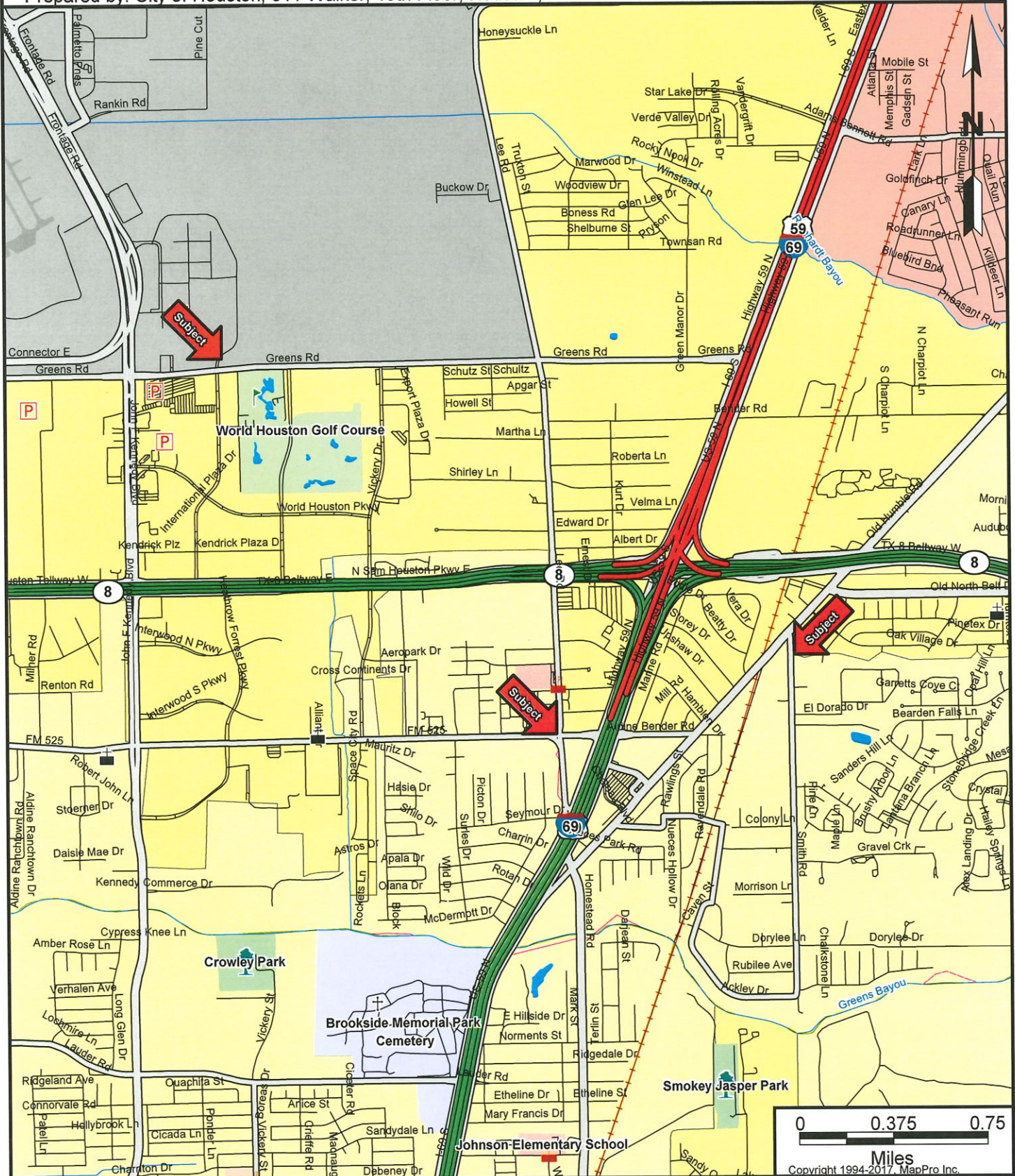
The location of property arrows shown on this map are approximate only. Inaccuracies may exist on map such as missing, incorrectly drawn, or incorrectly addressed streets. Please report any such inaccuracy to MapPro, Inc. so that appropriate corrections can be made.

LOCATION MAP

Description: 54-INCH WATERLINE ALONG VICKERY DRIVE FROM AEROPARK TO WORLD HOUSTON TO WORLD HOUSTON PARKWAY PROJECT; WBS# S-000900-0127-2-01; Key Map 374U, V

Subject Address: 15350 Vickery Dr, Houston, TX 77032

Prepared by: City of Houston, 611 Walker, 19th Floor, Houston, TX 77002



CAUTION:

The location of property arrows shown on this map are approximate only. Inaccuracies may exist on map such as missing, incorrectly drawn, or incorrectly addressed streets. Please report any such inaccuracy to MapPro, Inc. so that appropriate corrections can be made.

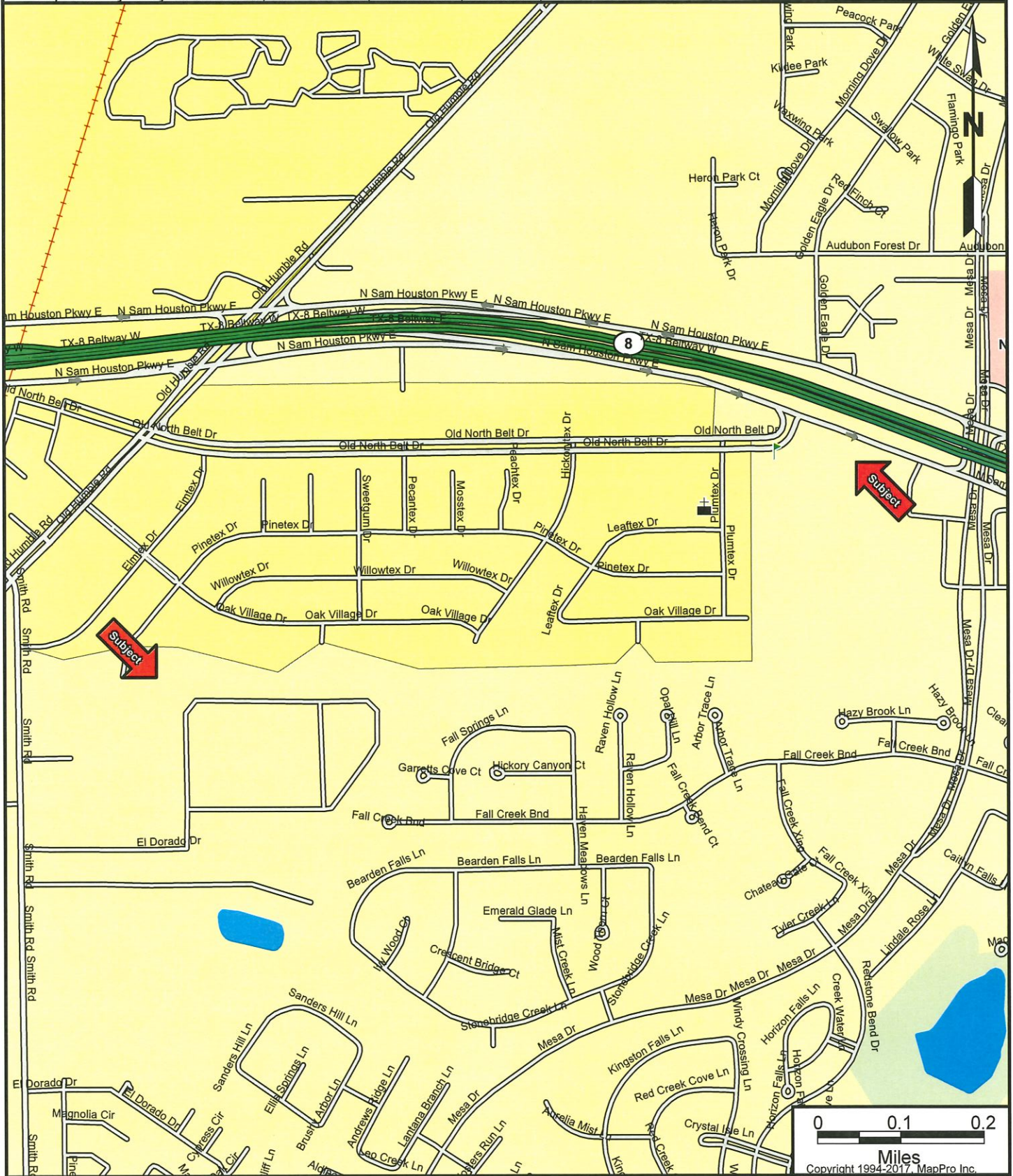
LOCATION MAP

Description: 108-Inch Water Line along city Easements from East of Bellow Falls Ln to Smith Rd

WBS# S-000900-0140A-2; Council Districts B and ETJ; Key Map 375T and U

Subject Address: , Humble, TX 77396

Prepared by: City of Houston, 611 Walker, 19th Floor, Houston, TX 77002



CAUTION:

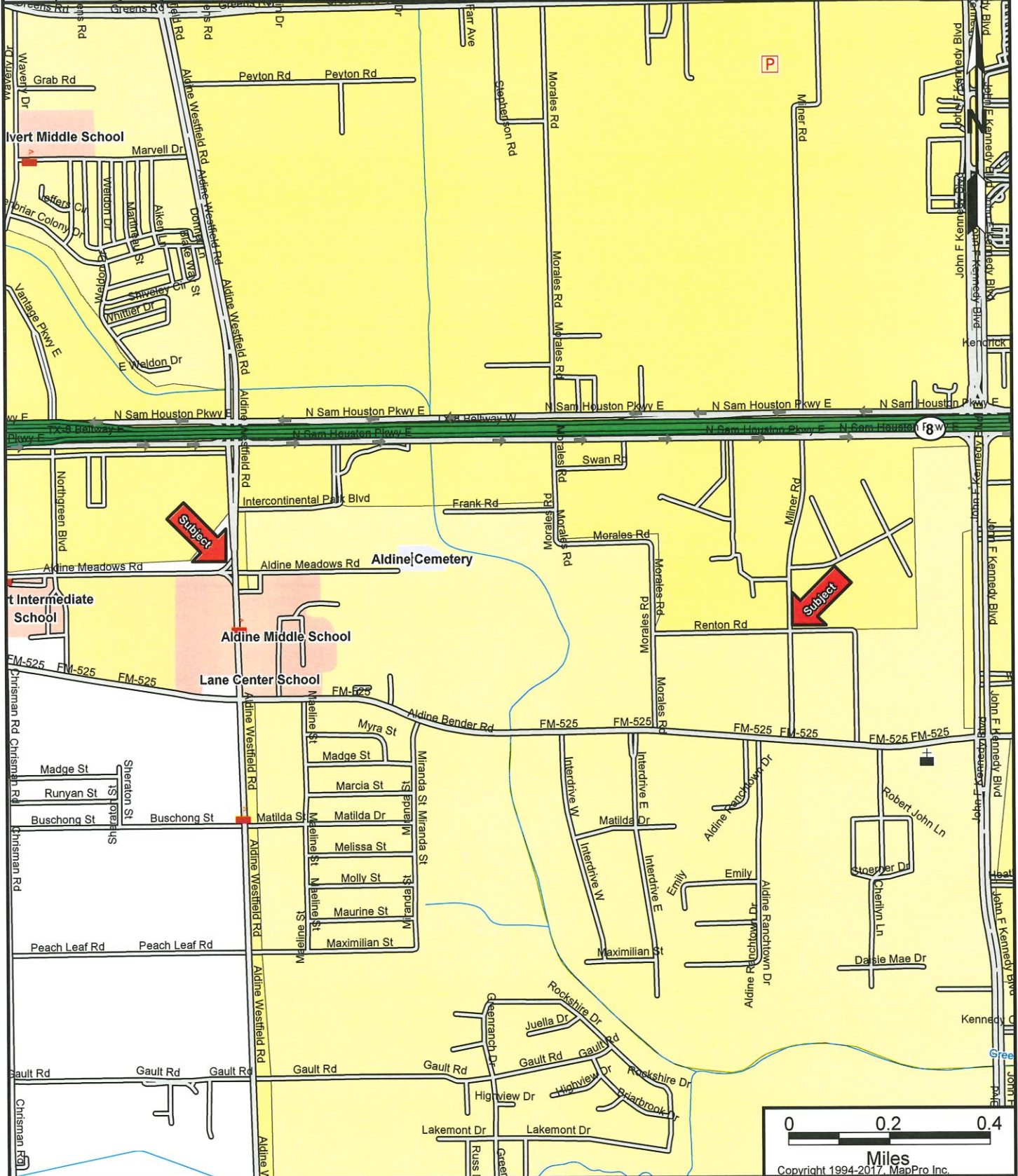
The location of property arrows shown on this map are approximate only. Inaccuracies may exist on map such as missing, incorrectly drawn, or incorrectly addressed streets. Please report any such inaccuracy to MapPro, Inc. so that appropriate corrections can be made.

LOCATION MAP

Description: Easement Acquisition for 108-Inch Water Line from Milner Road to Aldine Westfield
WBS #S-000900-0157-2; Council District B; Key Maps 373 V and 374S,T,W

Subject Address: , Aldine, TX 77032

Prepared by: City of Houston, 611 Walker, 19th Floor, Houston, TX 77002



CAUTION:

The location of property arrows shown on this map are approximate only. Inaccuracies may exist on map such as missing, incorrectly drawn, or incorrectly addressed streets. Please report any such inaccuracy to MapPro, Inc. so that appropriate corrections can be made.

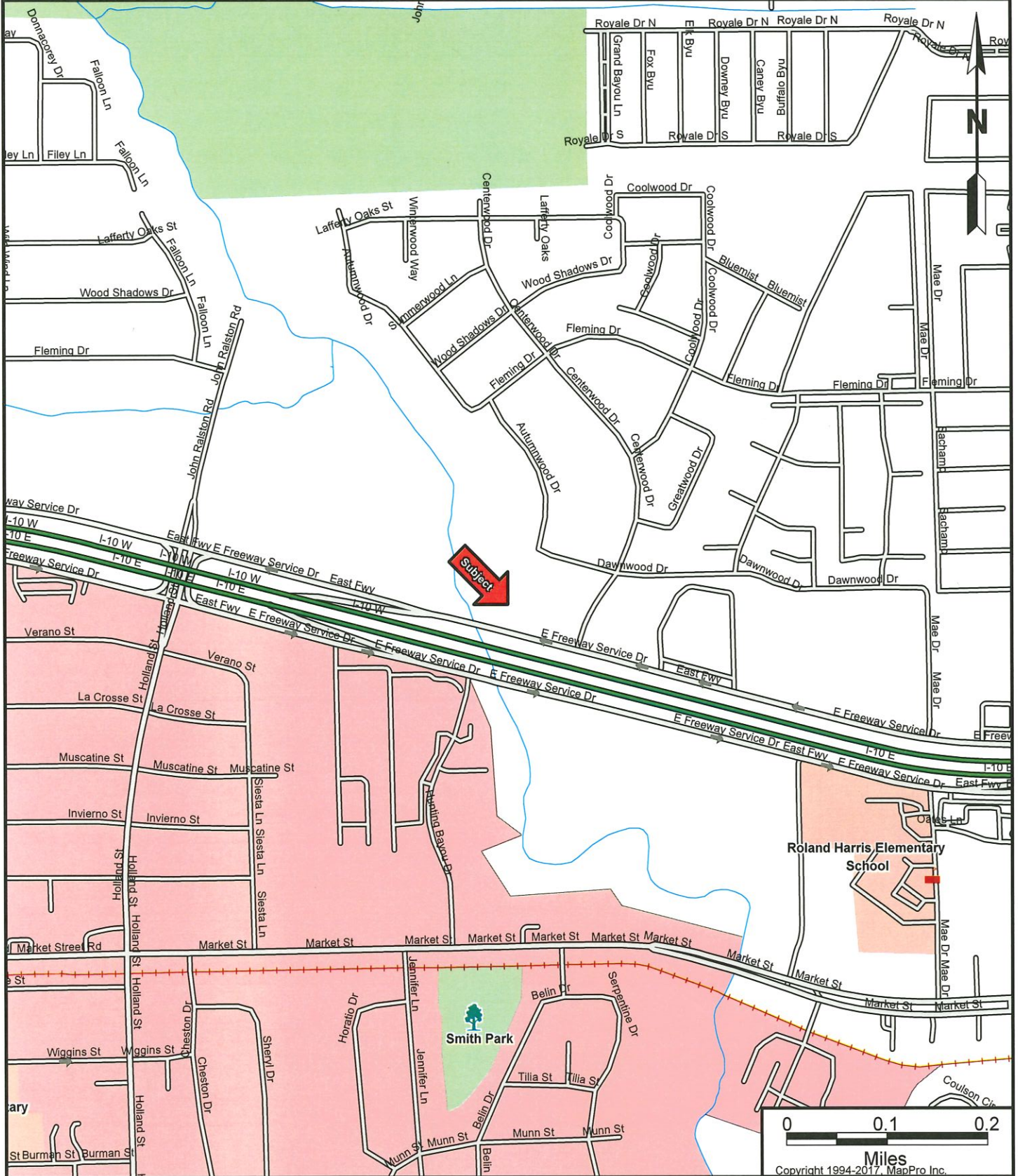
LOCATION MAP

Description: Miscellaneous Large Diameter Water Line Improvements - Package 1 Project [Map 1 of 2]

WBS# S-000900-0163-2; Council District I; Key Maps 496F and 493R

Subject Address: 11901 E Freeway Service Road, Houston, TX 77013

Prepared by: City of Houston, 611 Walker, 19th Floor, Houston, TX 77002



CAUTION:

The location of property arrows shown on this map are approximate only. Inaccuracies may exist on map such as missing, incorrectly drawn, or incorrectly addressed streets. Please report any such inaccuracy to MapPro, Inc. so that appropriate corrections can be made.

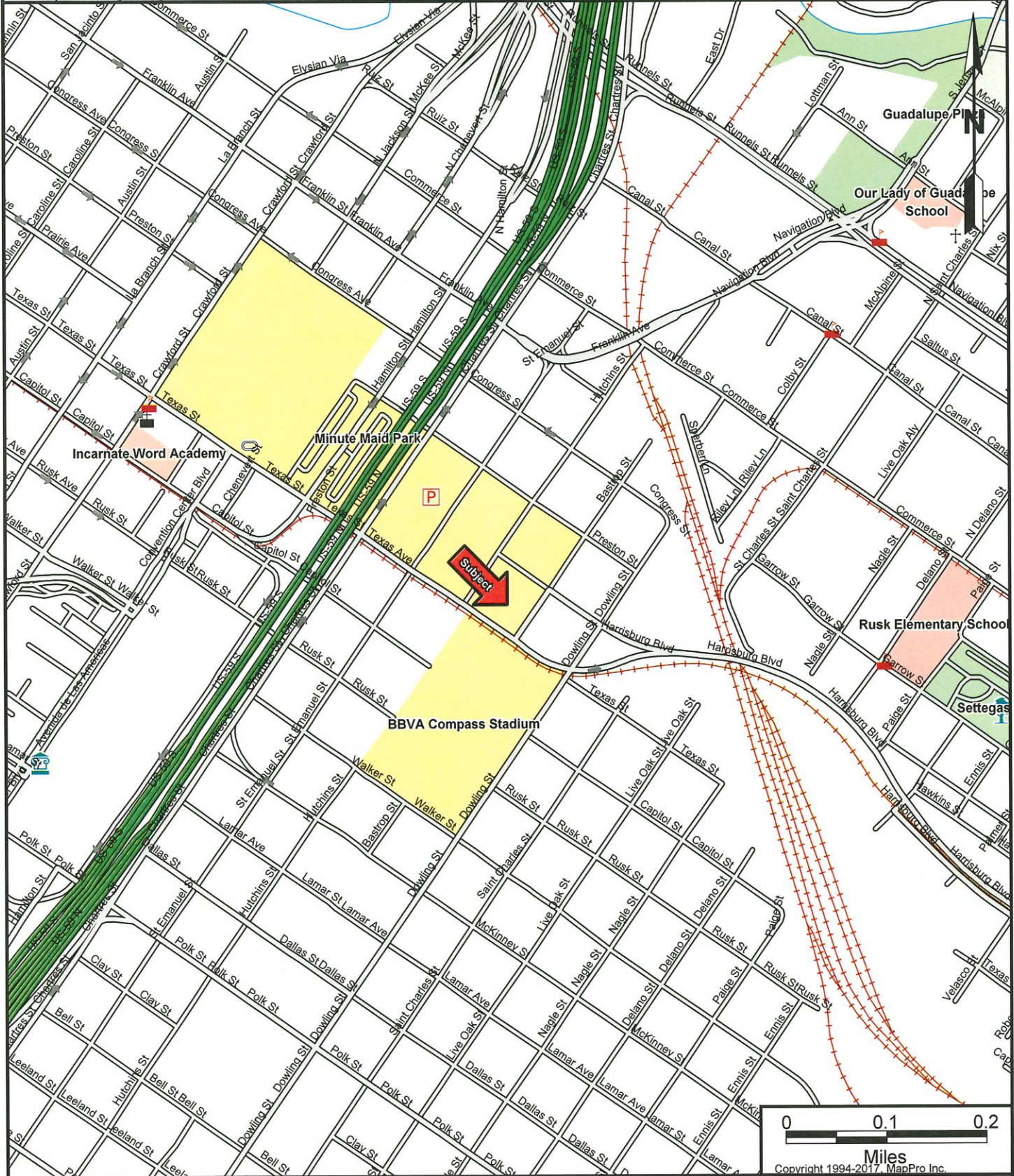
LOCATION MAP

Description: Miscellaneous Large Diameter Water Line Improvements - Package 1 [Map 2 of 2]

WBS: S-000900-0163-2; Council District I; Key Maps 496F, 493R

Subject Address: , Houston, TX 77003

Prepared by: City of Houston, 611 Walker, 19th Floor, Houston, TX 77002



CAUTION:

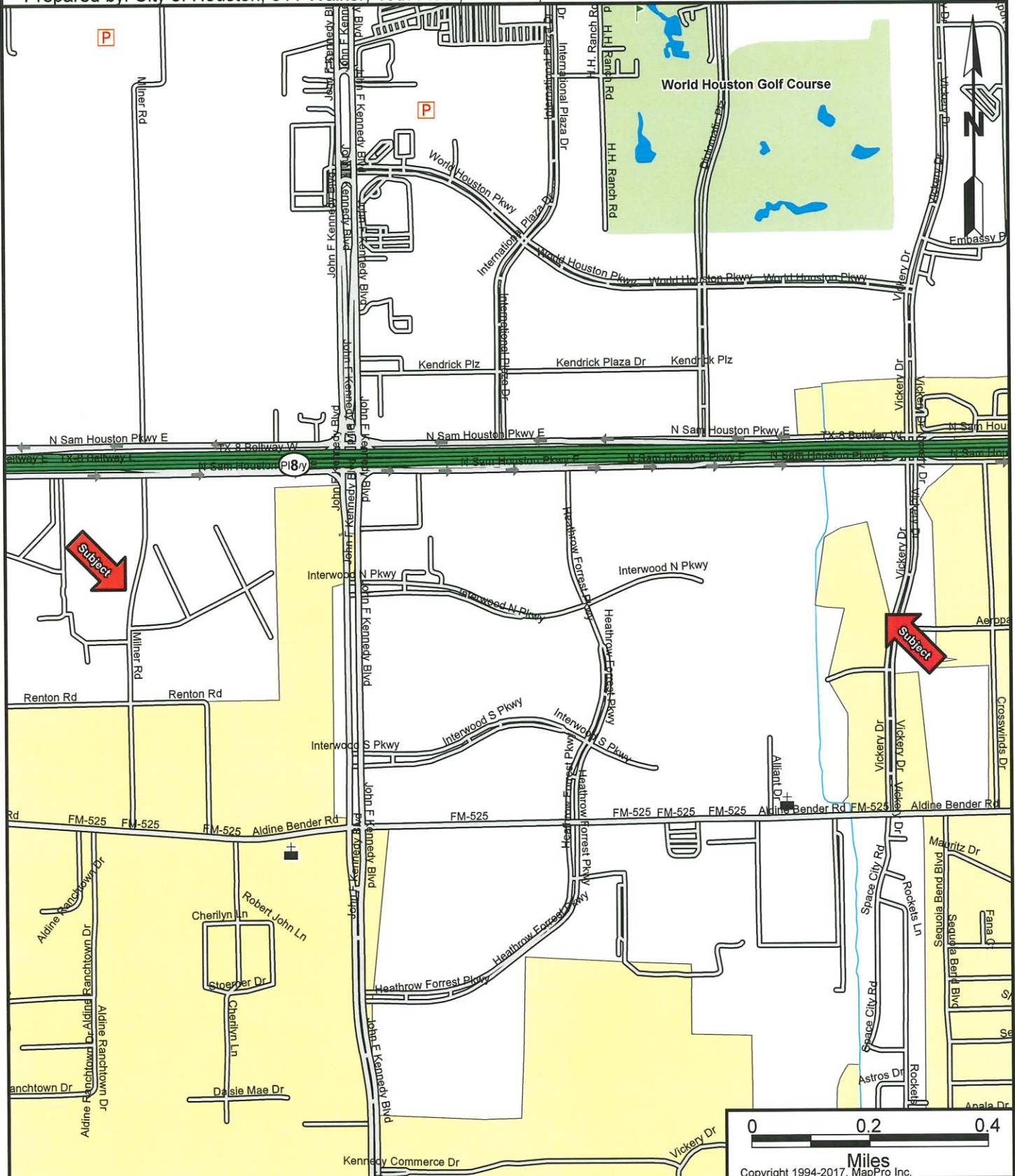
The location of property arrows shown on this map are approximate only. Inaccuracies may exist on map such as missing, incorrectly drawn, or incorrectly addressed streets. Please report any such inaccuracy to MapPro, Inc. so that appropriate corrections can be made.

LOCATION MAP

Description: 108-Inch Water Line from Vickery Drive to Milner Road (Block A) Easement Acquisition
WBS# S-000900-0164-2; Council District B; Key Maps 374T, 374U and 374Y

Subject Address: , Houston, TX 77032

Prepared by: City of Houston, 611 Walker, 19th Floor, Houston, TX 77002



CAUTION:

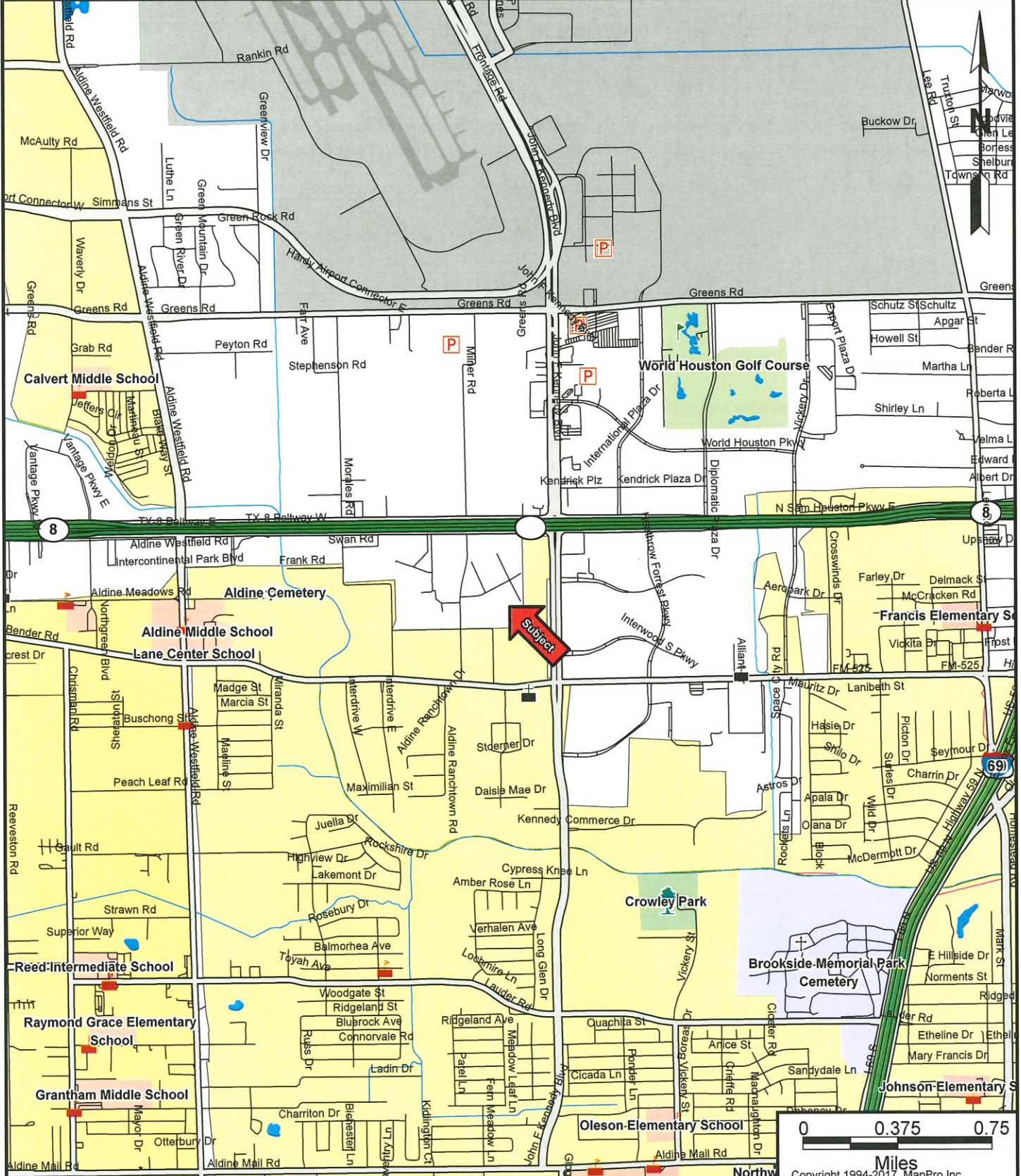
The location of property arrows shown on this map are approximate only. Inaccuracies may exist on map such as missing, incorrectly drawn, or incorrectly addressed streets. Please report any such inaccuracy to MapPro, Inc. so that appropriate corrections can be made.

LOCATION MAP

Description: 108-Inch Water Line from Vickery Dr to Milner Rd (Block B) Easement Acquisition
WBS# S-000900-0164B-2-01; Council District B and ETJ; Key Map 374S, T

Subject Address: , Houston, TX 77032

Prepared by: City of Houston, 611 Walker, 19th Floor, Houston, TX 77002



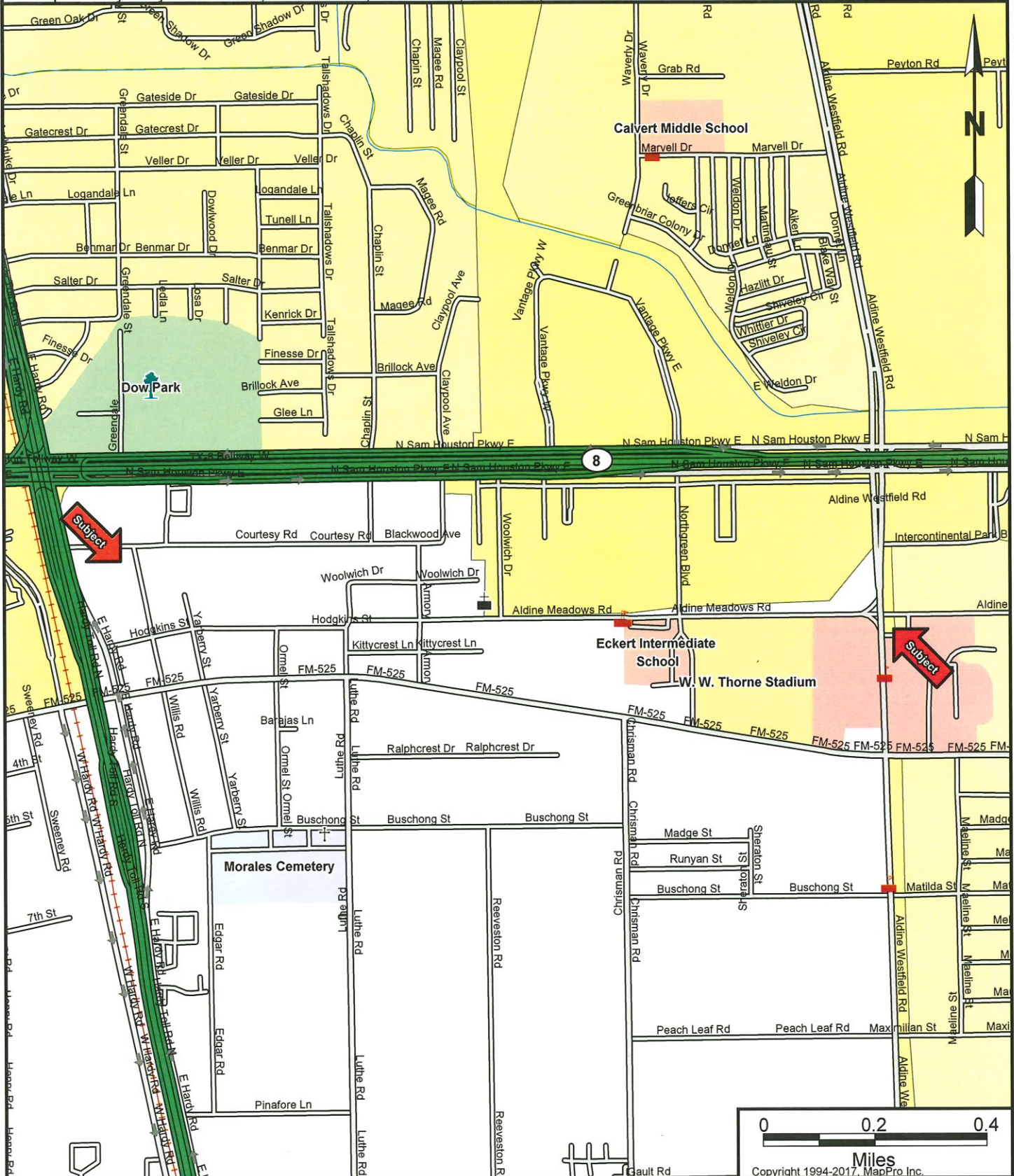
CAUTION: The location of property arrows shown on this map are approximate only. Inaccuracies may exist on map such as missing, incorrectly drawn, or incorrectly addressed streets. Please report any such inaccuracy to MapPro, Inc. so that appropriate corrections can be made.

LOCATION MAP

Description: 108-Inch Water Line along City Easements from Aldine Westfield to Willis Street
WBS S-000900-0165-2; Council District B, ETJ; KEY MAP 373T,373U,373V

Subject Address: , Aldine, TX 77032

Prepared by: City of Houston, 611 Walker, 19th Floor, Houston, TX 77002



CAUTION:

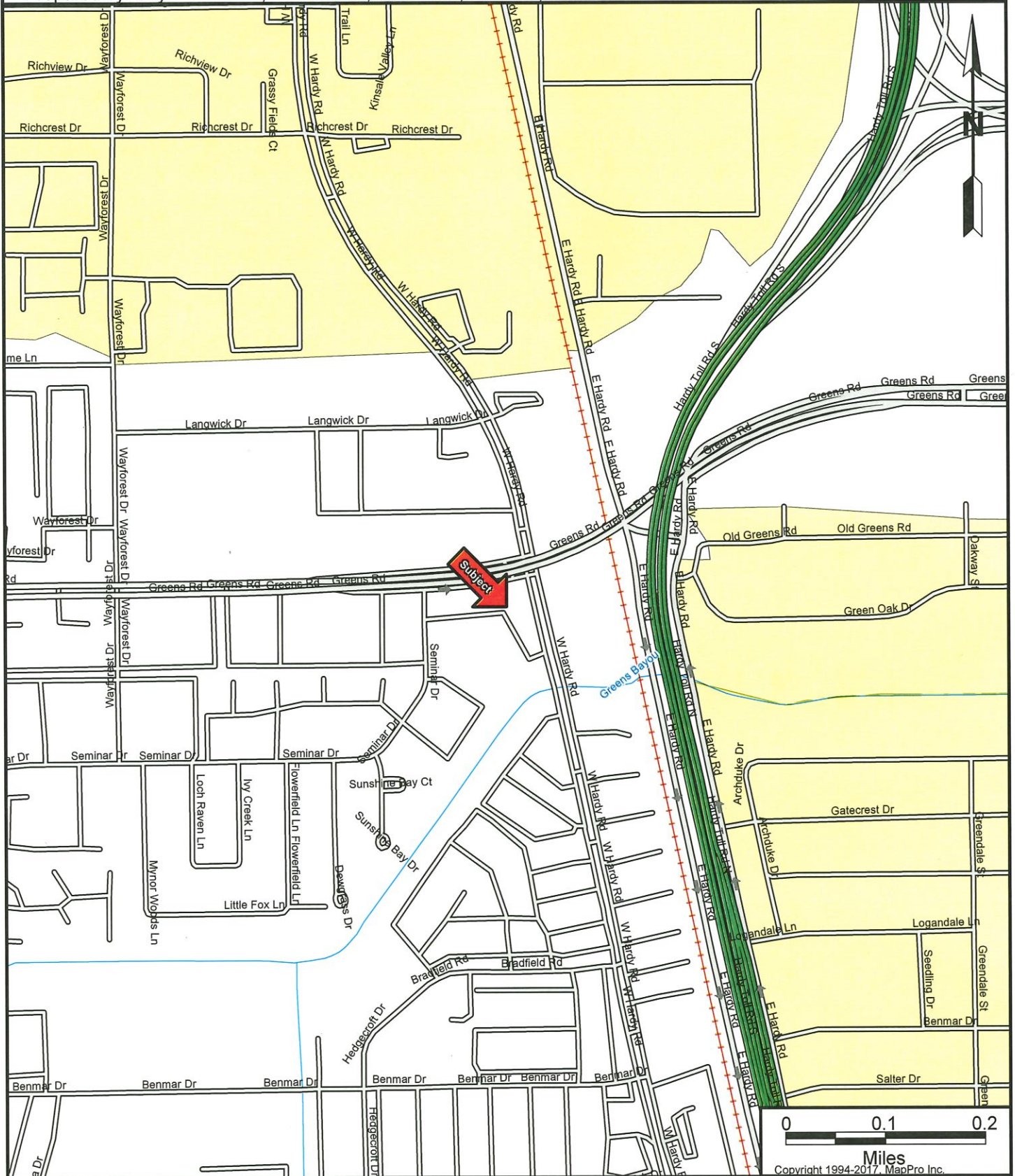
The location of property arrows shown on this map are approximate only. Inaccuracies may exist on map such as missing, incorrectly drawn, or incorrectly addressed streets. Please report any such inaccuracy to MapPro, Inc. so that appropriate corrections can be made.

LOCATION MAP

Description: 66-Inch Water Line Interconnection along W Hardy Rd from Beltway 8 to Greens Rd
WBS S-000900-0166-2; Council District B; Key Map 373P and 373T

Subject Address: , Houston, TX 77060

Prepared by: City of Houston, 611 Walker, 19th Floor, Houston, TX 77002



CAUTION:

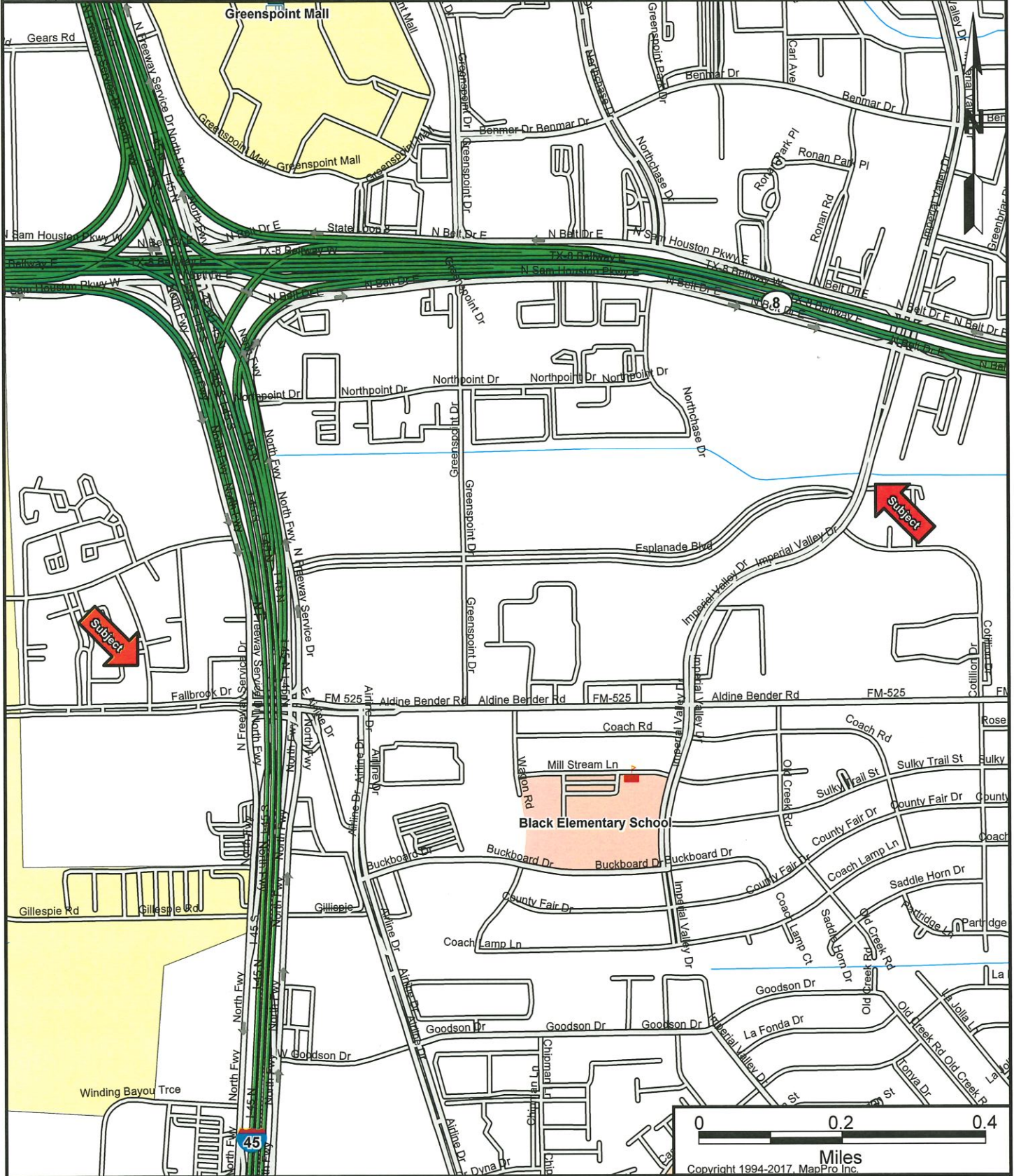
The location of property arrows shown on this map are approximate only. Inaccuracies may exist on map such as missing, incorrectly drawn, or incorrectly addressed streets. Please report any such inaccuracy to MapPro, Inc. so that appropriate corrections can be made.

LOCATION MAP

Description: 108-Inch Water Line along City Easements from Imperial Valley Dr to Green Plaza Dr
WBS S-000900-0168-2; Council District B; Key Maps 373S and 373V

Subject Address: , Houston, TX 77038

Prepared by: City of Houston, 611 Walker, 19th Floor, Houston, TX 77002



CAUTION:

The location of property arrows shown on this map are approximate only. Inaccuracies may exist on map such as missing, incorrectly drawn, or incorrectly addressed streets. Please report any such inaccuracy to MapPro, Inc. so that appropriate corrections can be made.