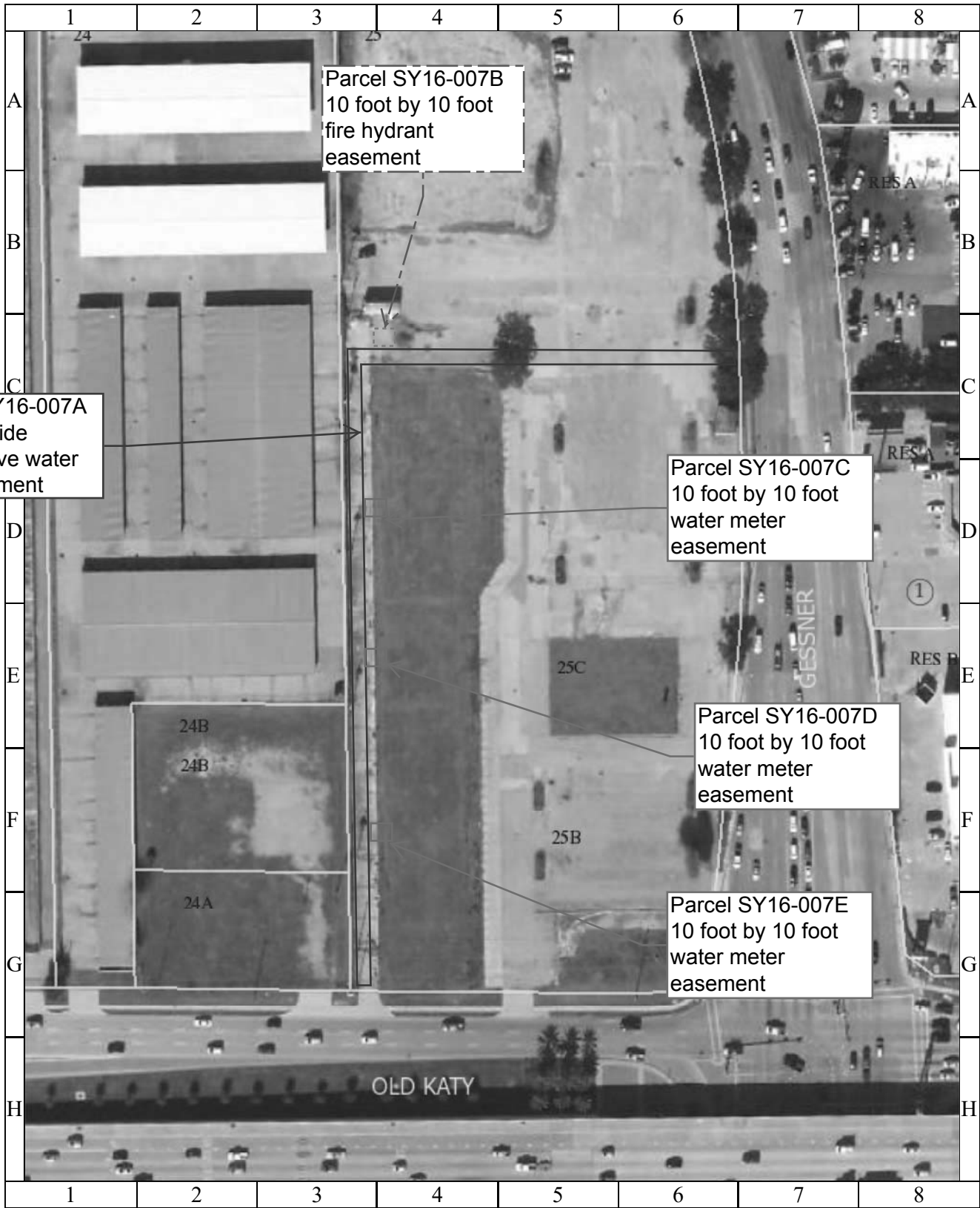


PARCEL MAP - Abandonment and sale of: 1) a 10-foot-wide prescriptive water line easement; 2) a 10 foot by 10 foot fire hydrant easement; and 3) three 10 foot by 10 foot water meter easements, located within Lots 24 and 25, Block 1, of the Frost and Settegast First Addition, out of the George Bellows Survey, A-3.



Parcel SY16-007A
10-foot-wide
prescriptive water
line easement

Parcel SY16-007B
10 foot by 10 foot
fire hydrant
easement

Parcel SY16-007C
10 foot by 10 foot
water meter
easement

Parcel SY16-007D
10 foot by 10 foot
water meter
easement

Parcel SY16-007E
10 foot by 10 foot
water meter
easement



1 inch = 42 feet

CITY OF HOUSTON
Department of Public Works and Engineering
Geographic Information & Management System (GIMS)



DISCLAIMER: THIS MAP REPRESENTS THE BEST INFORMATION AVAILABLE TO THE CITY.
THE CITY DOES NOT WARRANT ITS ACCURACY OR COMPLETENESS.