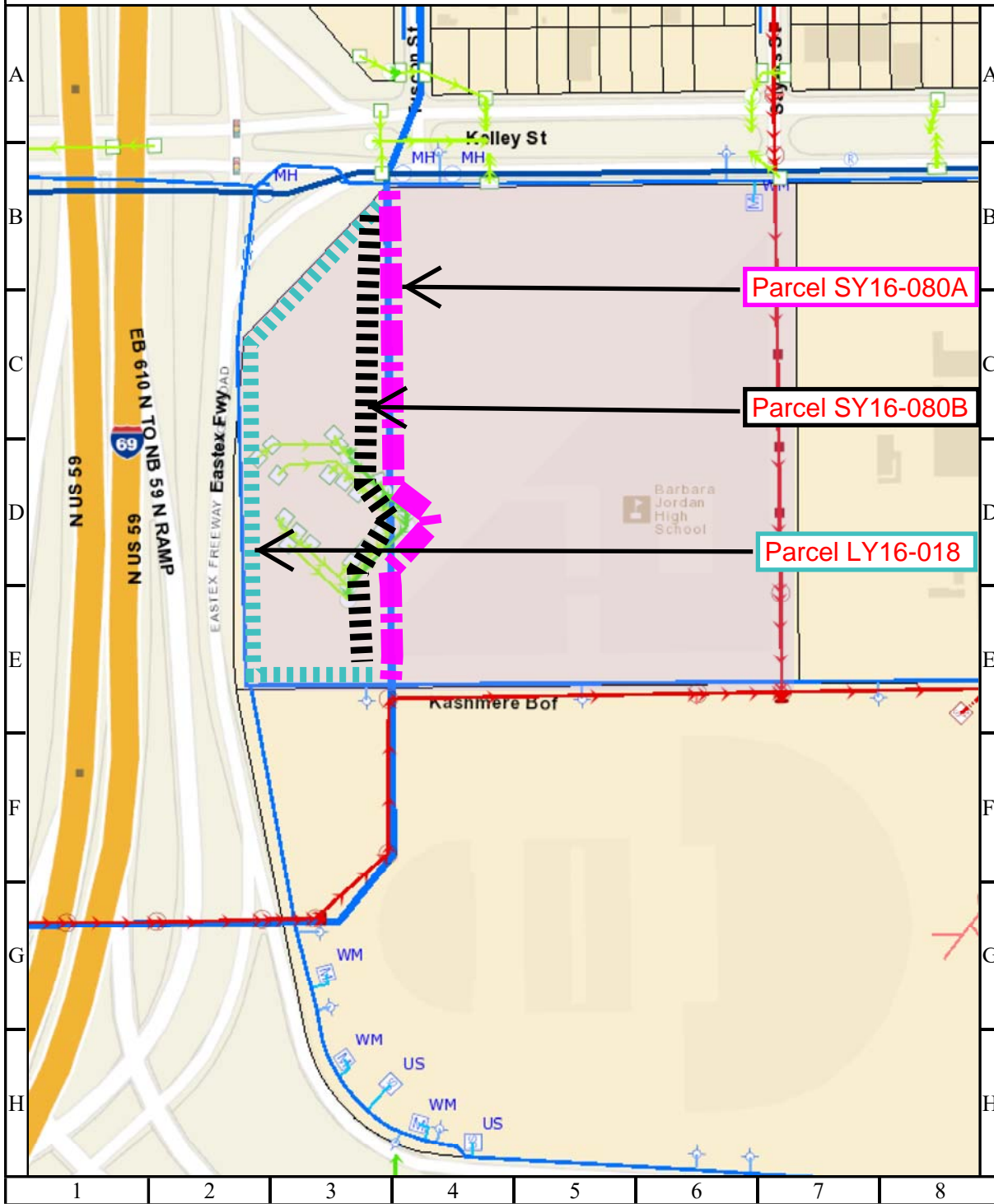


Subject: Abandonment and sale of: 1) a 20 foot-wide water line easement and 2) a 40 foot-wide drainage easement, in exchange for conveyance to the City of: 1) a variable-width storm sewer easement, all located in Restricted Reserve A, Block 1, Barbara Jordan High School Subdivision, out of the J.S. Collins Survey, A-195. **Parcels SY16-080A, SY16-080B, and LY16-018**



CITY OF HOUSTON
Department of Public Works and Engineering
Geographic Information & Management System (GIMS)
 1 inch = 73 feet

DISCLAIMER: THIS MAP REPRESENTS THE BEST INFORMATION AVAILABLE TO THE CITY.
 THE CITY DOES NOT WARRANT ITS ACCURACY OR COMPLETENESS.
 FIELD VERIFICATIONS SHOULD BE DONE AS NECESSARY.

