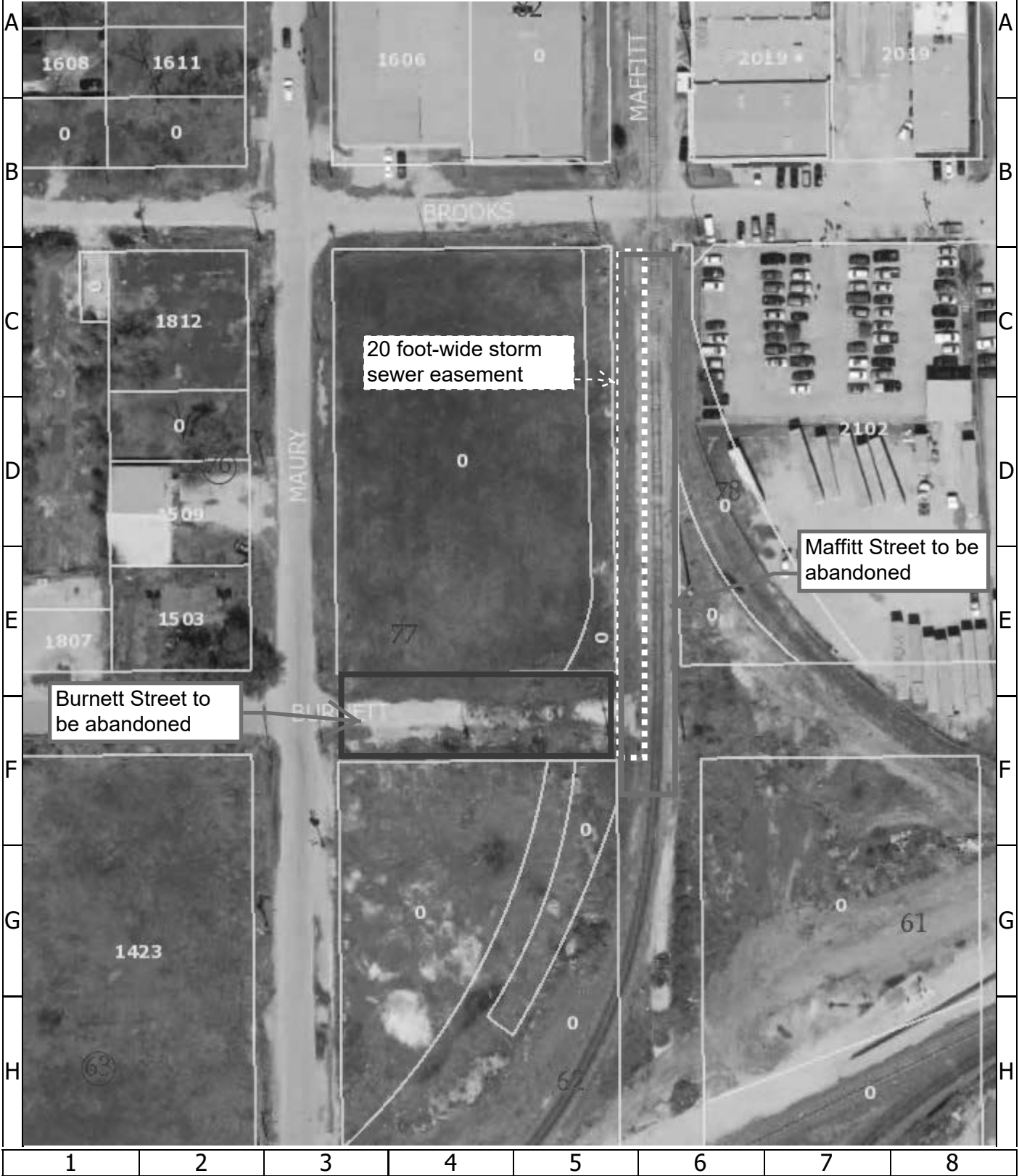


Parcel and Aerial Map

Abandonment and sale of Burnett Street, from Maury Street to Maffitt Street, and Maffitt Street, from Brooks Street south ±359 feet, in exchange for conveyance to the City of a 20 foot-wide storm sewer easement within Maffitt Street, all located within the S.F. Noble's Addition, out of the John Austin Survey, A-1. **SY17-005A, SY17-005B, and LY17-022**



**CITY OF HOUSTON**  
**Department of Public Works and Engineering**  
**Geographic Information & Management System**