

CURRENT ACREAGE:	3,555.052
CONSENT TRACT 1:	22.591
CONSENT TRACT 2:	85.599
EXISTING PLUS PROPOSED:	3,663.242

VICINITY MAP OF
 DISTRICT BOUNDARY & ANNEXATION
 HARRIS-MONTGOMERY COUNTIES M.U.D. NO. 386

THE WOODLANDS DEVELOPMENT COMPANY
 Two Hughes Landing 1790 Hughes Landing Blvd. Suite 600
 The Woodlands, Texas 77380
 Phone: (281) 719-6100 Fax: (281) 719-6111
 SCALE: 1"=6000' DATE: 05/2016 DRAWING NO.: HC-ANK-0516

FM 2920

CURVE TABLE
(CONSENT TRACT 1)

STATION	BEARING	ANGLE	CHORD BEARING	CHORD DISTANCE
01	S 41°41'45" W	90.000'	S 41°41'45" W	90.000'
02	S 72°22'27" W	23.367'	S 72°22'27" W	23.367'
03	S 22°22'27" W	39.000'	S 22°22'27" W	39.000'
04	S 72°22'27" W	328.200'	S 72°22'27" W	328.200'
05	S 22°22'27" W	328.200'	S 22°22'27" W	328.200'

CURVE TABLE
(CONSENT TRACT 2)

STATION	BEARING	ANGLE	CHORD BEARING	CHORD DISTANCE
06	S 72°22'27" W	33.000'	S 72°22'27" W	33.000'
07	S 41°41'45" W	60.000'	S 41°41'45" W	60.000'
08	S 72°22'27" W	103.000'	S 72°22'27" W	103.000'
09	S 22°22'27" W	844.800'	S 22°22'27" W	844.800'
10	S 72°22'27" W	1,183.000'	S 72°22'27" W	1,183.000'
11	S 41°41'45" W	844.800'	S 41°41'45" W	844.800'
12	S 72°22'27" W	306.000'	S 72°22'27" W	306.000'
13	S 22°22'27" W	1,183.000'	S 22°22'27" W	1,183.000'
14	S 72°22'27" W	22.000'	S 72°22'27" W	22.000'
15	S 22°22'27" W	445.000'	S 22°22'27" W	445.000'
16	S 72°22'27" W	23.000'	S 72°22'27" W	23.000'
17	S 41°41'45" W	44.000'	S 41°41'45" W	44.000'
18	S 72°22'27" W	306.000'	S 72°22'27" W	306.000'
19	S 22°22'27" W	33.000'	S 22°22'27" W	33.000'
20	S 72°22'27" W	33.000'	S 72°22'27" W	33.000'

LINE TABLE
(CONSENT TRACT 1)

LINE NO.	BEARING	DISTANCE
L1	N 41°41'45" E	30.000'
L2	S 47°22'27" W	30.000'
L3	S 41°41'45" E	30.000'
L4	S 50°22'27" E	35.400'
L5	N 41°41'45" E	20.000'
L6	S 72°22'27" W	30.000'
L7	S 47°22'27" W	30.000'
L8	S 22°22'27" W	30.000'
L9	S 72°22'27" W	30.000'
L10	S 22°22'27" W	30.000'
L11	S 72°22'27" W	30.000'
L12	S 22°22'27" W	30.000'
L13	S 72°22'27" W	30.000'

LINE TABLE
(CONSENT TRACT 2)

LINE NO.	BEARING	DISTANCE
L14	S 72°22'27" W	30.000'
L15	S 41°41'45" E	30.000'
L16	S 72°22'27" W	30.000'
L17	S 41°41'45" E	30.000'
L18	S 72°22'27" W	30.000'
L19	S 41°41'45" E	30.000'
L20	S 72°22'27" W	30.000'
L21	S 41°41'45" E	30.000'
L22	S 72°22'27" W	30.000'
L23	S 41°41'45" E	30.000'
L24	S 72°22'27" W	30.000'
L25	S 41°41'45" E	30.000'
L26	S 72°22'27" W	30.000'
L27	S 41°41'45" E	30.000'
L28	S 72°22'27" W	30.000'
L29	S 41°41'45" E	30.000'
L30	S 72°22'27" W	30.000'

CONSENT TRACT 1
22,591 ACRES

CONSENT TRACT 2
85,599 ACRES

EXISTING HARRIS-MONTGOMERY COUNTIES
M.U.D. No. 386
TRACT "A"
3,138.126 Acres

EXISTING HARRIS-MONTGOMERY COUNTIES
M.U.D. No. 386
TRACT "C"
8.459 ACRES

MAP SHOWING
PROPOSED ANNEXATION TO
HARRIS-MONTGOMERY COUNTIES
MUNICIPAL UTILITY DISTRICT
NO. 386
108.190 ACRES
OUT OF THE
GEORGE GALBRAITH SURVEY A-22
W. H. MARCH SURVEY A-567
HARRIS COUNTY, TEXAS

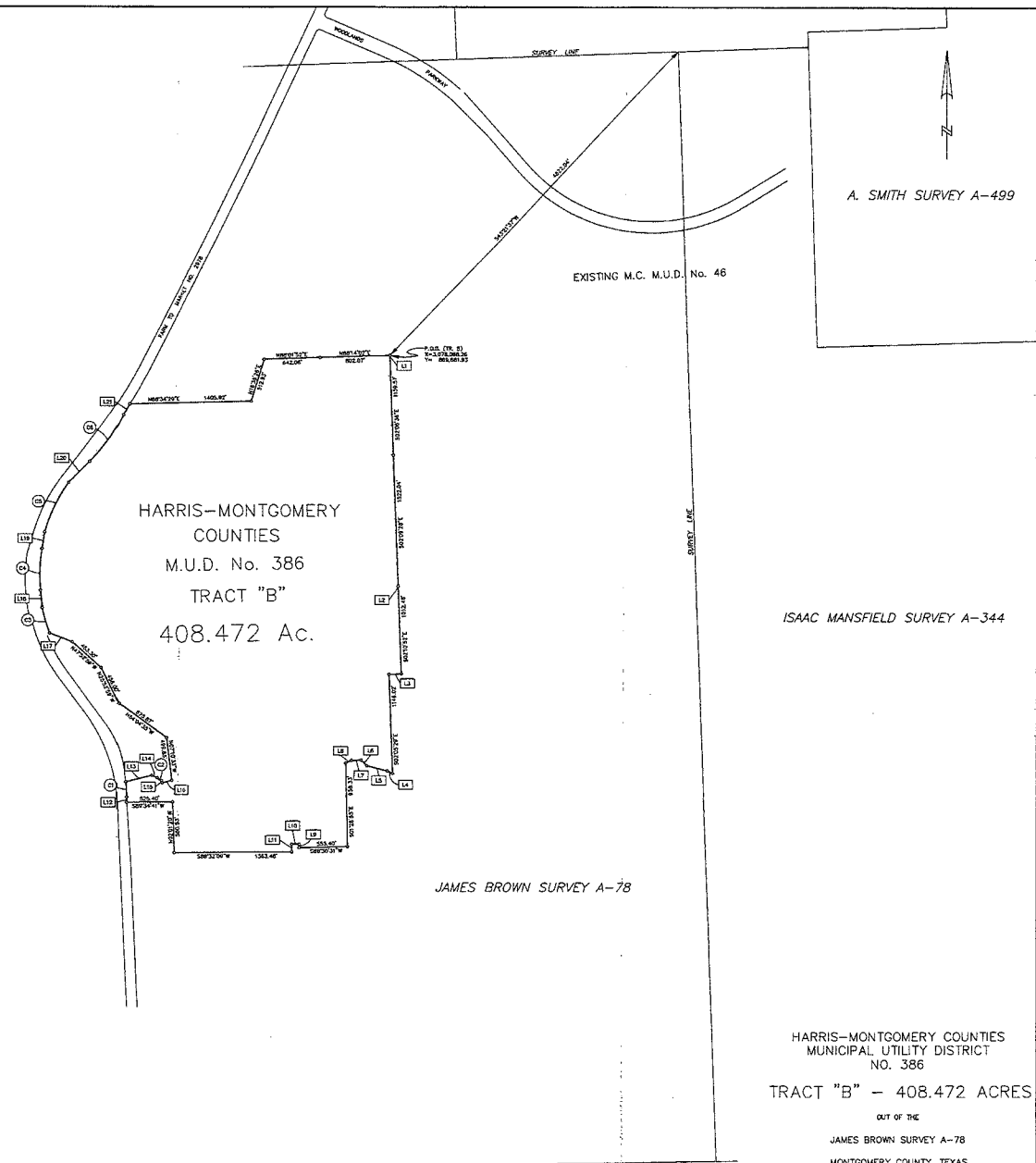
NOTE:
All Control is Referred To The 1927 Texas State
Plane Coordinate System, Lambert Projection,
South Central Zone.

Scale 1" = 600'

SHEET 1 OF 2

CURVE TABLE					
CURVE NO.	DELTA	RADIUS	ARC	CHORD BEARING	CHORD DISTANCE
C1	08°05'44"	1881.53	174.41'	N 04°23'27" W	174.35'
C2	08°15'20"	55.00'	43.81'	S 07°24'07" E	60.12'
C3	09°27'22"	1848.88'	310.88'	N 10°21'28" W	310.32'
C4	14°50'50"	1838.85'	481.85'	N 01°57'13" E	480.32'
C5	19°18'12"	1808.85'	644.01'	N 25°08'54" E	640.88'
C6	18°22'00"	2333.13'	663.67'	N 35°53'18" E	661.41'

LINE TABLE		
LINE NO.	BEARING	DISTANCE
L1	S 07°48'35" E	0.48'
L2	N 88°00'11" E	0.00'
L3	S 87°08'14" W	140.84'
L4	N 64°11'08" W	68.23'
L5	N 73°22'36" W	242.19'
L6	N 44°42'32" W	64.87'
L7	S 87°50'47" W	110.06'
L8	S 65°58'40" W	72.88'
L9	N 07°58'20" W	40.00'
L10	S 80°25'19" W	84.33'
L11	S 07°29'20" E	87.80'
L12	N 07°30'35" W	56.18'
L13	N 70°55'10" E	208.00'
L14	S 47°21'01" E	48.30'
L15	S 14°01'13" E	27.75'
L16	N 78°54'36" E	114.22'
L17	N 88°22'50" W	273.80'
L18	N 00°32'47" W	183.37'
L19	N 09°27'13" E	193.37'
L20	N 44°30'21" E	343.91'
L21	N 28°02'36" E	143.54'



NOTE:
 All Control is Referred To The 1927 Texas State
 Plane Coordinate System, Lambert Projection,
 South Central Zone.

HARRIS-MONTGOMERY COUNTIES
 MUNICIPAL UTILITY DISTRICT
 NO. 386
 TRACT "B" - 408.472 ACRES
 OUT OF THE
 JAMES BROWN SURVEY A-78
 MONTGOMERY COUNTY, TEXAS
 Scale: 1" = 600'
 April, 2017
 SH. 2 OF 2