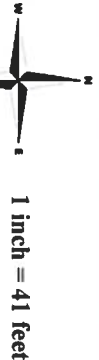
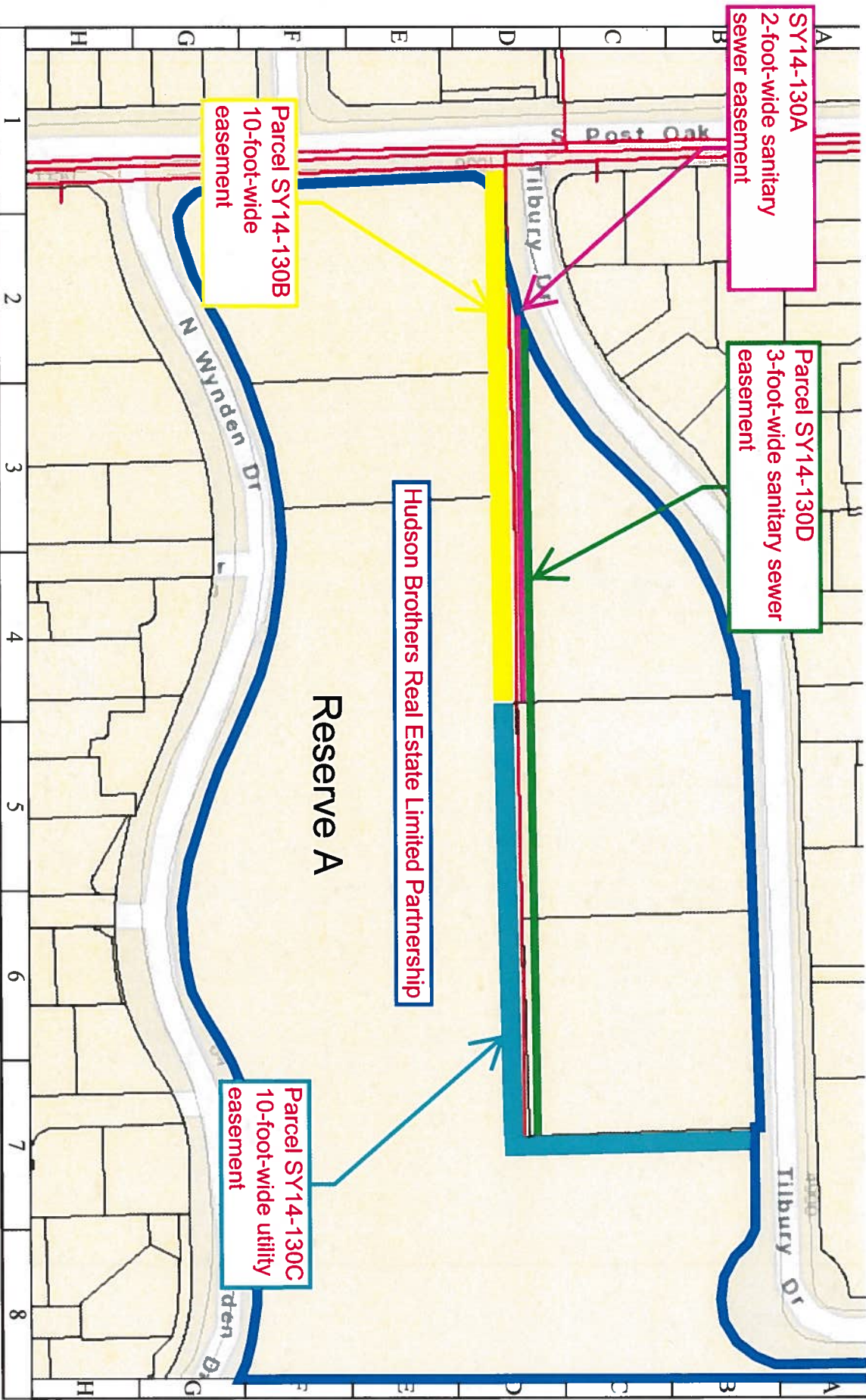


Parcel Map

Abandonment and sale of: 1) a 2-foot-wide sanitary sewer easement, from ±150 feet east of the northeast property line of Reserve A east ±250 feet; 2) a 10-foot-wide easement, from the northeast property line of Reserve A east ±425 feet; 3) a 10-foot-wide utility easement, from ±425 feet east of the northeast property line of Reserve A east ±425 feet, then north to Tilbury Drive; and 4) a 3-foot-wide sanitary sewer easement, from the northeast property line of Reserve A east ±400 feet, all located within the West Oaks Subdivision, out of the William White Survey. Parcels SY14-130A through SY14-130D



CITY OF HOUSTON
 Department of Public Works and Engineering
 Geographic Information & Management System (GIMS)

DISCLAIMER: THIS MAP REPRESENTS THE BEST INFORMATION AVAILABLE TO THE CITY.
 THE CITY DOES NOT WARRANT ITS ACCURACY OR COMPLETENESS.
 FIELD VERIFICATIONS SHOULD BE DONE AS NECESSARY.



City Of Houston Council District D Dwight Boykins

Legend

- Wateway
- District D

Amendment to Council Motion
2011-0029, Parcels S710-074,
AY10-331, AY10-332A through
AY10-332D, QY10-007, and VY10-039



Source: GIS Services Division
Date: January 2014
Reference: pl17375_D

This map is made available for reference purposes only and should not be substituted for a survey product. The City of Houston will not accept liability of any kind in conjunction with its use.

