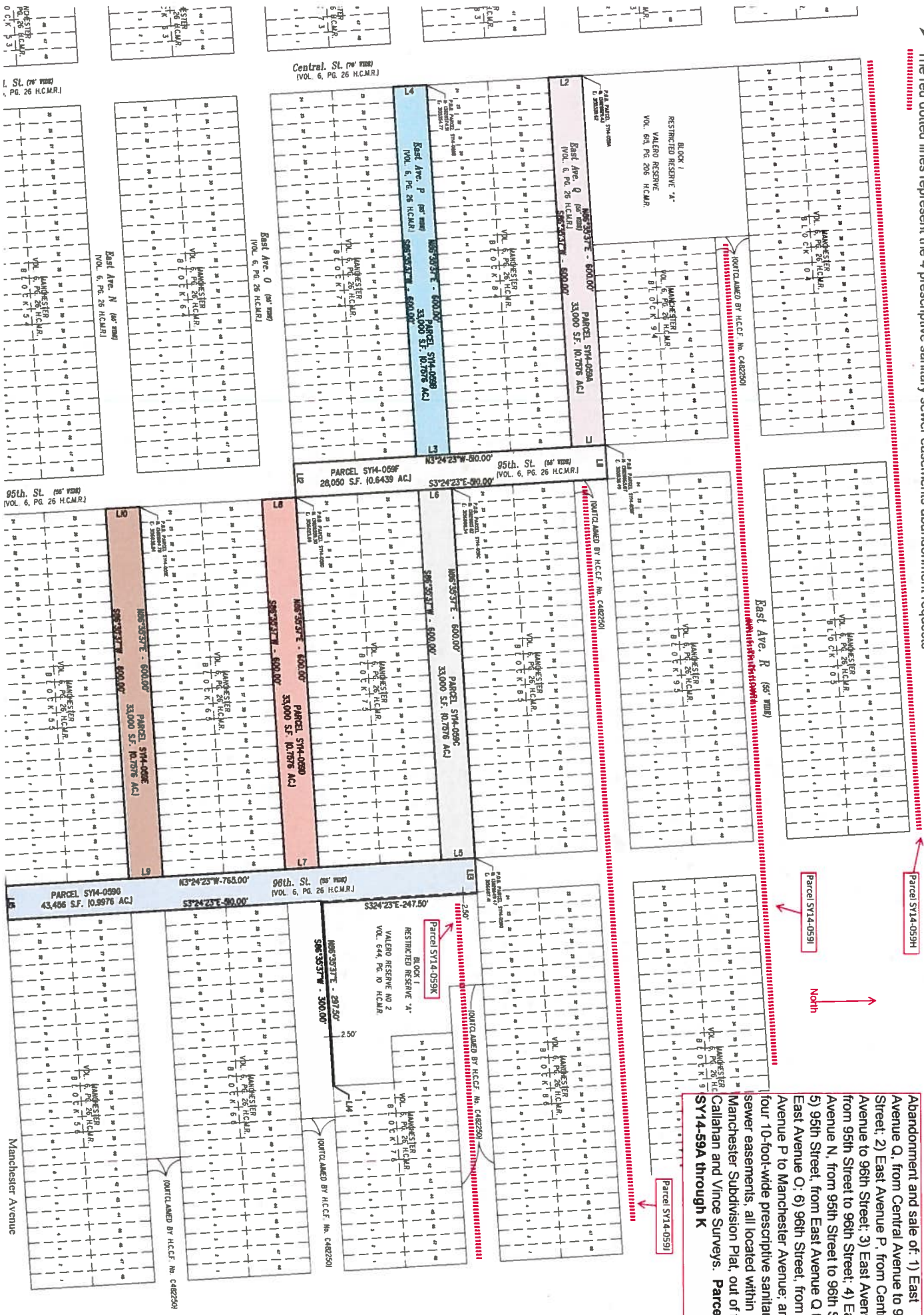
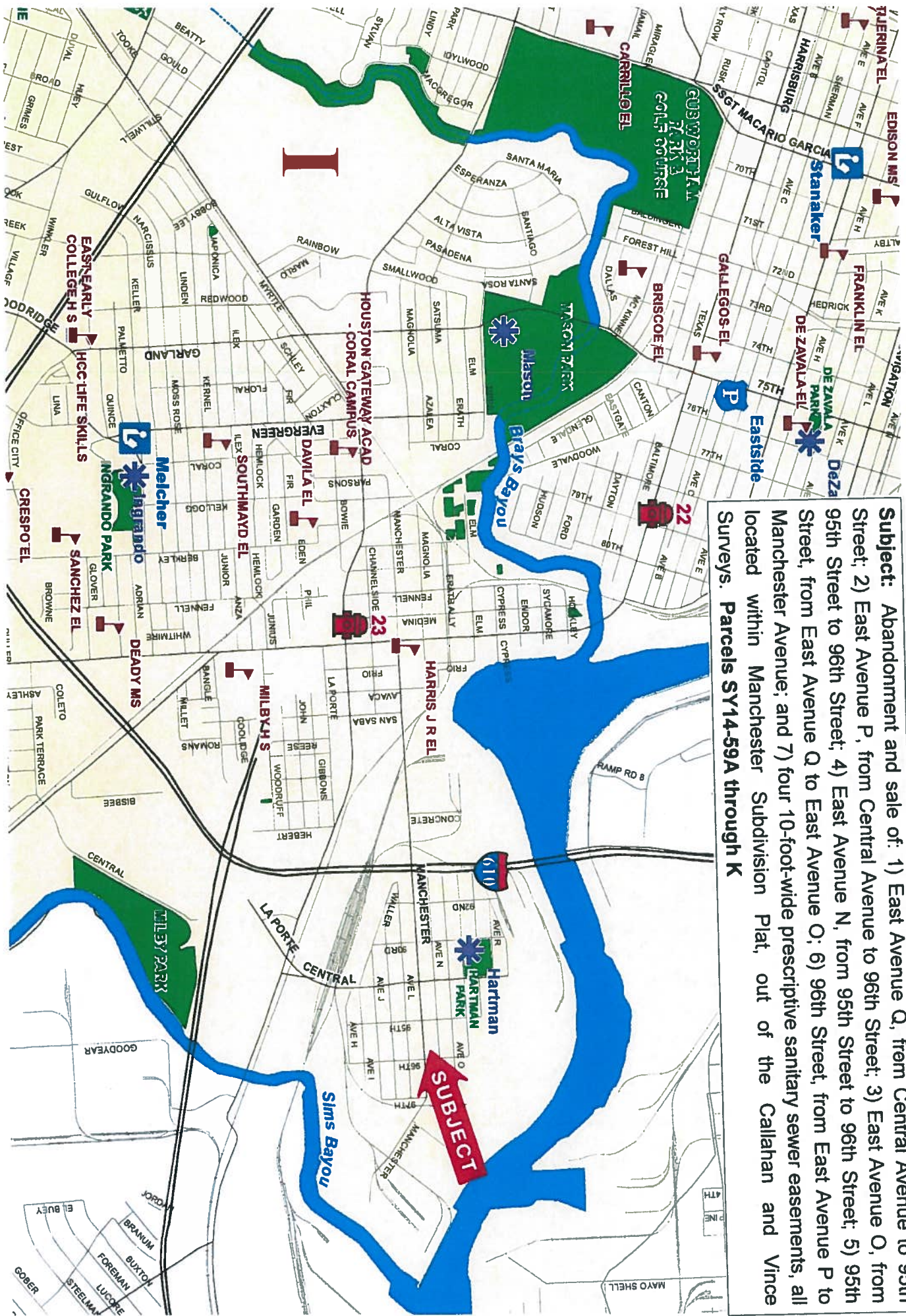


The different colored areas represent individual street abandonment requests
 The red dotted lines represent the 4 prescriptive sanitary sewer easements abandonment requests



Abandonment and sale of: 1) East Avenue Q, from Central Avenue to 95th Street; 2) East Avenue P, from Central Avenue to 96th Street; 3) East Avenue O, from 95th Street to 96th Street; 4) East Avenue N, from 95th Street to 96th Street; 5) 95th Street, from East Avenue Q to East Avenue O; 6) 96th Street, from East Avenue P to Manchester Avenue; and 7) four 10-foot-wide prescriptive sanitary sewer easements, all located within Manchester Subdivision Plat, out of the Callahan and Vince Surveys. **Parcels SY4-59A through K**

Manchester Avenue



Subject: Abandonment and sale of: 1) East Avenue Q, from Central Avenue to 95th Street; 2) East Avenue P, from Central Avenue to 96th Street; 3) East Avenue O, from 95th Street to 96th Street; 4) East Avenue N, from 95th Street to 96th Street; 5) 95th Street, from East Avenue Q to East Avenue O; 6) 96th Street, from East Avenue P to Manchester Avenue; and 7) four 10-foot-wide prescriptive sanitary sewer easements, all located within Manchester Subdivision Plat, out of the Callahan and Vince Surveys. Parcels SY14-59A through K