

LEGEND:
 ACRES - BUILDING AREA
 FC - FIRM CODE COUNTY CLERK'S FILE
 HCR - HARRIS COUNTY DEED RECORDS
 HPL - HOUSTON LIGHTING & POWER
 S.O.W. - RIGHT OF WAY
 S.F. - SQUARE FEET

FILED
 197819
 11 AM
 29 JUN 2008
 11:00 AM
 17/12/08 10:43



STATE OF TEXAS
 COUNTY OF HARRIS
 I, Carol DeLano, County Clerk of Harris County, Texas, do hereby certify that the foregoing plat is a true and correct copy of the original as filed in my office on this 11th day of June, 2008.

APPROVED AND FORWARDED:
William C. Gehring
 COUNTY CLERK

1. THE SUBDIVISION IS A SUBDIVISION OF LAND SITUATED IN THE ABRAHAM SCALES SURVEY, ABSTRACT NO. 687, HARRIS COUNTY, TEXAS, ALSO BEING A PLAT OF CALLED LOT SIX (6) IN AN UNRECORDED SUBDIVISION PREPARED BY H.H. MORELAND SURVEY, OF THAT CERTAIN 41.472 ACRES OF LAND DESCRIBED IN VOL. 4446, PG. 460, OUT OF THE HARRIS COUNTY DEED RECORDS, HARRIS COUNTY, TEXAS.

2. UNLESS OTHERWISE INDICATED, THE MEASURING LINES (ML) SHOWN ON THIS PLAT ARE MEASURED TO THE CENTER OF THE MEASURING LINE (ML) UNLESS OTHERWISE INDICATED. THE MEASURING LINES (ML) SHOWN ON THIS PLAT ARE MEASURED TO THE CENTER OF THE MEASURING LINE (ML) UNLESS OTHERWISE INDICATED.

3. THE MEASURING LINES (ML) SHOWN ON THIS PLAT ARE MEASURED TO THE CENTER OF THE MEASURING LINE (ML) UNLESS OTHERWISE INDICATED. THE MEASURING LINES (ML) SHOWN ON THIS PLAT ARE MEASURED TO THE CENTER OF THE MEASURING LINE (ML) UNLESS OTHERWISE INDICATED.

4. THE MEASURING LINES (ML) SHOWN ON THIS PLAT ARE MEASURED TO THE CENTER OF THE MEASURING LINE (ML) UNLESS OTHERWISE INDICATED. THE MEASURING LINES (ML) SHOWN ON THIS PLAT ARE MEASURED TO THE CENTER OF THE MEASURING LINE (ML) UNLESS OTHERWISE INDICATED.

5. THE MEASURING LINES (ML) SHOWN ON THIS PLAT ARE MEASURED TO THE CENTER OF THE MEASURING LINE (ML) UNLESS OTHERWISE INDICATED. THE MEASURING LINES (ML) SHOWN ON THIS PLAT ARE MEASURED TO THE CENTER OF THE MEASURING LINE (ML) UNLESS OTHERWISE INDICATED.

6. THE MEASURING LINES (ML) SHOWN ON THIS PLAT ARE MEASURED TO THE CENTER OF THE MEASURING LINE (ML) UNLESS OTHERWISE INDICATED. THE MEASURING LINES (ML) SHOWN ON THIS PLAT ARE MEASURED TO THE CENTER OF THE MEASURING LINE (ML) UNLESS OTHERWISE INDICATED.

7. THE MEASURING LINES (ML) SHOWN ON THIS PLAT ARE MEASURED TO THE CENTER OF THE MEASURING LINE (ML) UNLESS OTHERWISE INDICATED. THE MEASURING LINES (ML) SHOWN ON THIS PLAT ARE MEASURED TO THE CENTER OF THE MEASURING LINE (ML) UNLESS OTHERWISE INDICATED.

8. THE MEASURING LINES (ML) SHOWN ON THIS PLAT ARE MEASURED TO THE CENTER OF THE MEASURING LINE (ML) UNLESS OTHERWISE INDICATED. THE MEASURING LINES (ML) SHOWN ON THIS PLAT ARE MEASURED TO THE CENTER OF THE MEASURING LINE (ML) UNLESS OTHERWISE INDICATED.

9. THE MEASURING LINES (ML) SHOWN ON THIS PLAT ARE MEASURED TO THE CENTER OF THE MEASURING LINE (ML) UNLESS OTHERWISE INDICATED. THE MEASURING LINES (ML) SHOWN ON THIS PLAT ARE MEASURED TO THE CENTER OF THE MEASURING LINE (ML) UNLESS OTHERWISE INDICATED.

10. THE MEASURING LINES (ML) SHOWN ON THIS PLAT ARE MEASURED TO THE CENTER OF THE MEASURING LINE (ML) UNLESS OTHERWISE INDICATED. THE MEASURING LINES (ML) SHOWN ON THIS PLAT ARE MEASURED TO THE CENTER OF THE MEASURING LINE (ML) UNLESS OTHERWISE INDICATED.

11. THE MEASURING LINES (ML) SHOWN ON THIS PLAT ARE MEASURED TO THE CENTER OF THE MEASURING LINE (ML) UNLESS OTHERWISE INDICATED. THE MEASURING LINES (ML) SHOWN ON THIS PLAT ARE MEASURED TO THE CENTER OF THE MEASURING LINE (ML) UNLESS OTHERWISE INDICATED.

12. THE MEASURING LINES (ML) SHOWN ON THIS PLAT ARE MEASURED TO THE CENTER OF THE MEASURING LINE (ML) UNLESS OTHERWISE INDICATED. THE MEASURING LINES (ML) SHOWN ON THIS PLAT ARE MEASURED TO THE CENTER OF THE MEASURING LINE (ML) UNLESS OTHERWISE INDICATED.

13. THE MEASURING LINES (ML) SHOWN ON THIS PLAT ARE MEASURED TO THE CENTER OF THE MEASURING LINE (ML) UNLESS OTHERWISE INDICATED. THE MEASURING LINES (ML) SHOWN ON THIS PLAT ARE MEASURED TO THE CENTER OF THE MEASURING LINE (ML) UNLESS OTHERWISE INDICATED.

14. THE MEASURING LINES (ML) SHOWN ON THIS PLAT ARE MEASURED TO THE CENTER OF THE MEASURING LINE (ML) UNLESS OTHERWISE INDICATED. THE MEASURING LINES (ML) SHOWN ON THIS PLAT ARE MEASURED TO THE CENTER OF THE MEASURING LINE (ML) UNLESS OTHERWISE INDICATED.

15. THE MEASURING LINES (ML) SHOWN ON THIS PLAT ARE MEASURED TO THE CENTER OF THE MEASURING LINE (ML) UNLESS OTHERWISE INDICATED. THE MEASURING LINES (ML) SHOWN ON THIS PLAT ARE MEASURED TO THE CENTER OF THE MEASURING LINE (ML) UNLESS OTHERWISE INDICATED.

16. THE MEASURING LINES (ML) SHOWN ON THIS PLAT ARE MEASURED TO THE CENTER OF THE MEASURING LINE (ML) UNLESS OTHERWISE INDICATED. THE MEASURING LINES (ML) SHOWN ON THIS PLAT ARE MEASURED TO THE CENTER OF THE MEASURING LINE (ML) UNLESS OTHERWISE INDICATED.

17. THE MEASURING LINES (ML) SHOWN ON THIS PLAT ARE MEASURED TO THE CENTER OF THE MEASURING LINE (ML) UNLESS OTHERWISE INDICATED. THE MEASURING LINES (ML) SHOWN ON THIS PLAT ARE MEASURED TO THE CENTER OF THE MEASURING LINE (ML) UNLESS OTHERWISE INDICATED.

18. THE MEASURING LINES (ML) SHOWN ON THIS PLAT ARE MEASURED TO THE CENTER OF THE MEASURING LINE (ML) UNLESS OTHERWISE INDICATED. THE MEASURING LINES (ML) SHOWN ON THIS PLAT ARE MEASURED TO THE CENTER OF THE MEASURING LINE (ML) UNLESS OTHERWISE INDICATED.

19. THE MEASURING LINES (ML) SHOWN ON THIS PLAT ARE MEASURED TO THE CENTER OF THE MEASURING LINE (ML) UNLESS OTHERWISE INDICATED. THE MEASURING LINES (ML) SHOWN ON THIS PLAT ARE MEASURED TO THE CENTER OF THE MEASURING LINE (ML) UNLESS OTHERWISE INDICATED.

20. THE MEASURING LINES (ML) SHOWN ON THIS PLAT ARE MEASURED TO THE CENTER OF THE MEASURING LINE (ML) UNLESS OTHERWISE INDICATED. THE MEASURING LINES (ML) SHOWN ON THIS PLAT ARE MEASURED TO THE CENTER OF THE MEASURING LINE (ML) UNLESS OTHERWISE INDICATED.

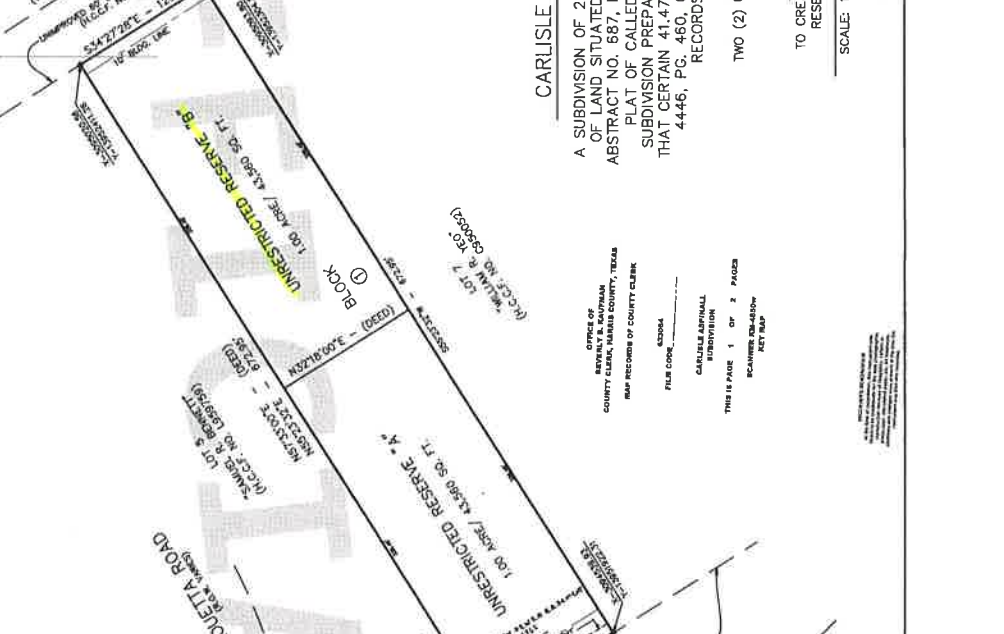
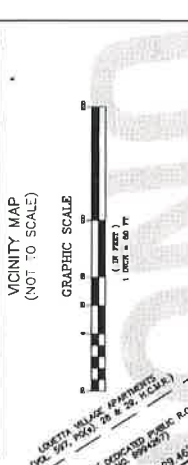
21. THE MEASURING LINES (ML) SHOWN ON THIS PLAT ARE MEASURED TO THE CENTER OF THE MEASURING LINE (ML) UNLESS OTHERWISE INDICATED. THE MEASURING LINES (ML) SHOWN ON THIS PLAT ARE MEASURED TO THE CENTER OF THE MEASURING LINE (ML) UNLESS OTHERWISE INDICATED.

22. THE MEASURING LINES (ML) SHOWN ON THIS PLAT ARE MEASURED TO THE CENTER OF THE MEASURING LINE (ML) UNLESS OTHERWISE INDICATED. THE MEASURING LINES (ML) SHOWN ON THIS PLAT ARE MEASURED TO THE CENTER OF THE MEASURING LINE (ML) UNLESS OTHERWISE INDICATED.

23. THE MEASURING LINES (ML) SHOWN ON THIS PLAT ARE MEASURED TO THE CENTER OF THE MEASURING LINE (ML) UNLESS OTHERWISE INDICATED. THE MEASURING LINES (ML) SHOWN ON THIS PLAT ARE MEASURED TO THE CENTER OF THE MEASURING LINE (ML) UNLESS OTHERWISE INDICATED.

24. THE MEASURING LINES (ML) SHOWN ON THIS PLAT ARE MEASURED TO THE CENTER OF THE MEASURING LINE (ML) UNLESS OTHERWISE INDICATED. THE MEASURING LINES (ML) SHOWN ON THIS PLAT ARE MEASURED TO THE CENTER OF THE MEASURING LINE (ML) UNLESS OTHERWISE INDICATED.

25. THE MEASURING LINES (ML) SHOWN ON THIS PLAT ARE MEASURED TO THE CENTER OF THE MEASURING LINE (ML) UNLESS OTHERWISE INDICATED. THE MEASURING LINES (ML) SHOWN ON THIS PLAT ARE MEASURED TO THE CENTER OF THE MEASURING LINE (ML) UNLESS OTHERWISE INDICATED.



CARLISE ASPINALL SUBDIVISION

A SUBDIVISION OF 2,000 ACRES, OR 87,120 SQUARE FEET OF LAND SITUATED IN THE ABRAHAM SCALES SURVEY, ABSTRACT NO. 687, HARRIS COUNTY, TEXAS, ALSO BEING A PLAT OF CALLED LOT SIX (6) IN AN UNRECORDED SUBDIVISION PREPARED BY H.H. MORELAND SURVEY, OF THAT CERTAIN 41.472 ACRES OF LAND DESCRIBED IN VOL. 4446, PG. 460, OUT OF THE HARRIS COUNTY DEED RECORDS, HARRIS COUNTY, TEXAS

TWO (2) UNRESTRICTED RESERVES AND ONE (1) BLOCK

REASON FOR PLAT:
 TO CREATE TWO (2) UNRESTRICTED RESERVES IN ONE (1) BLOCK

SCALE: 1" = 60' DATE: MAY, 2008

PREPARED BY:
 CARLISE ASPINALL

OFFICE OF
 REV. H. H. MORELAND
 COUNTY CLERK, HARRIS COUNTY, TEXAS
 HARRIS COUNTY CLERK'S OFFICE

FILE BOOK

BOOK

CARLISE ASPINALL
 SUBDIVISION

THIS IS PAGE 1 OF 2 PAGES

SCANNED BY
 JET MAP

PREPARED BY:
 LANDMAPS & INFORMATION
 P.O. BOX 7894 HOUSTON, TEXAS 77270
 PHONE: (713) 944-4124 FAX: (281) 301-9735



THIS IS PAGE 1 OF 2 PAGES