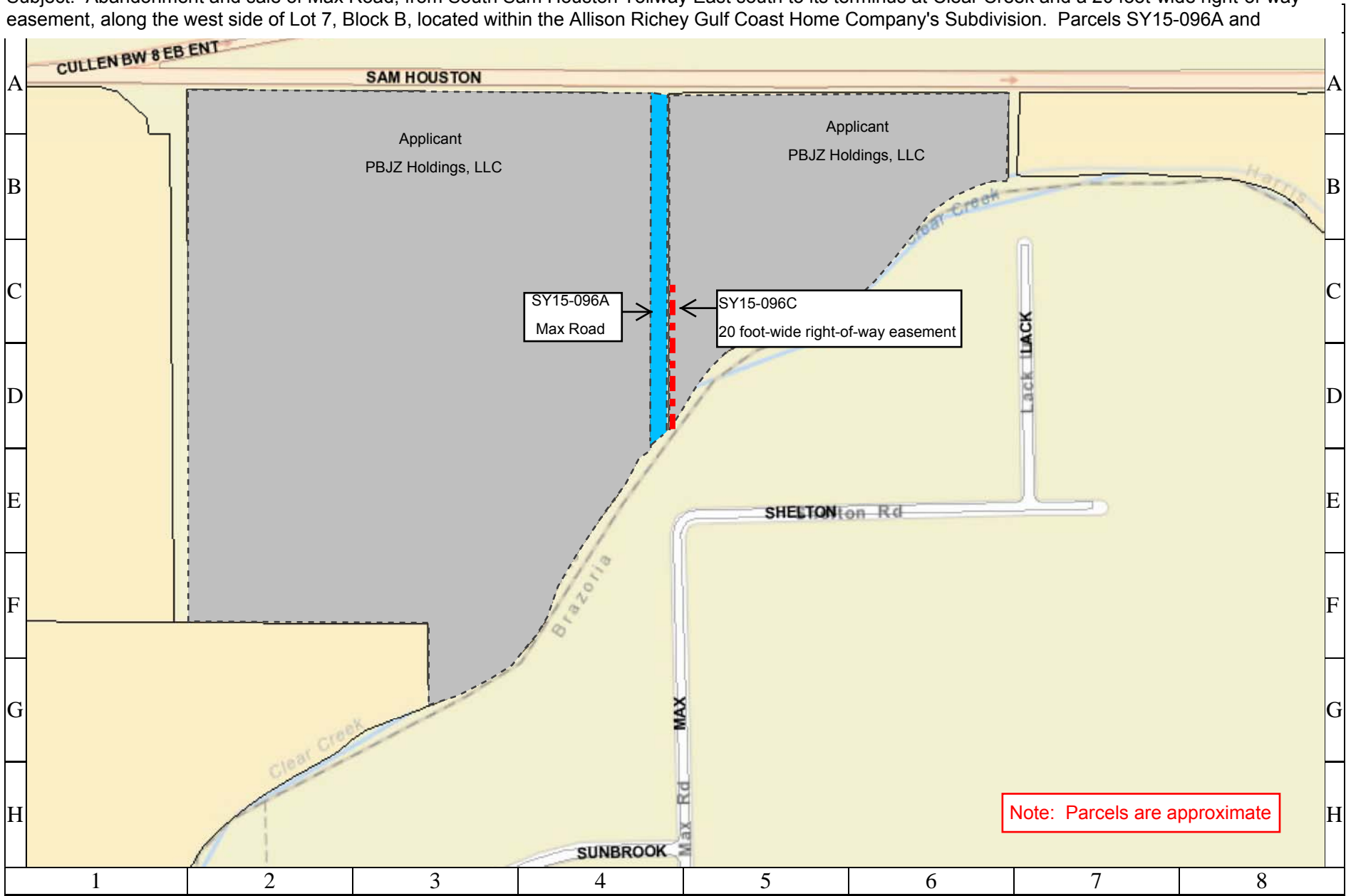
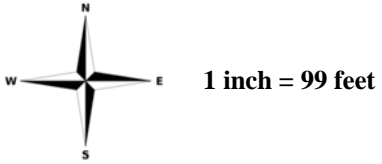


Parcel Map

Subject: Abandonment and sale of Max Road, from South Sam Houston Tollway East south to its terminus at Clear Creek and a 20 foot-wide right-of-way easement, along the west side of Lot 7, Block B, located within the Allison Richey Gulf Coast Home Company's Subdivision. Parcels SY15-096A and



Note: Parcels are approximate



CITY OF HOUSTON
Department of Public Works and Engineering
Geographic Information & Management System (GIMS)

DISCLAIMER: THIS MAP REPRESENTS THE BEST INFORMATION AVAILABLE TO THE CITY.
THE CITY DOES NOT WARRANT ITS ACCURACY OR COMPLETENESS.
FIELD VERIFICATIONS SHOULD BE DONE AS NECESSARY.

