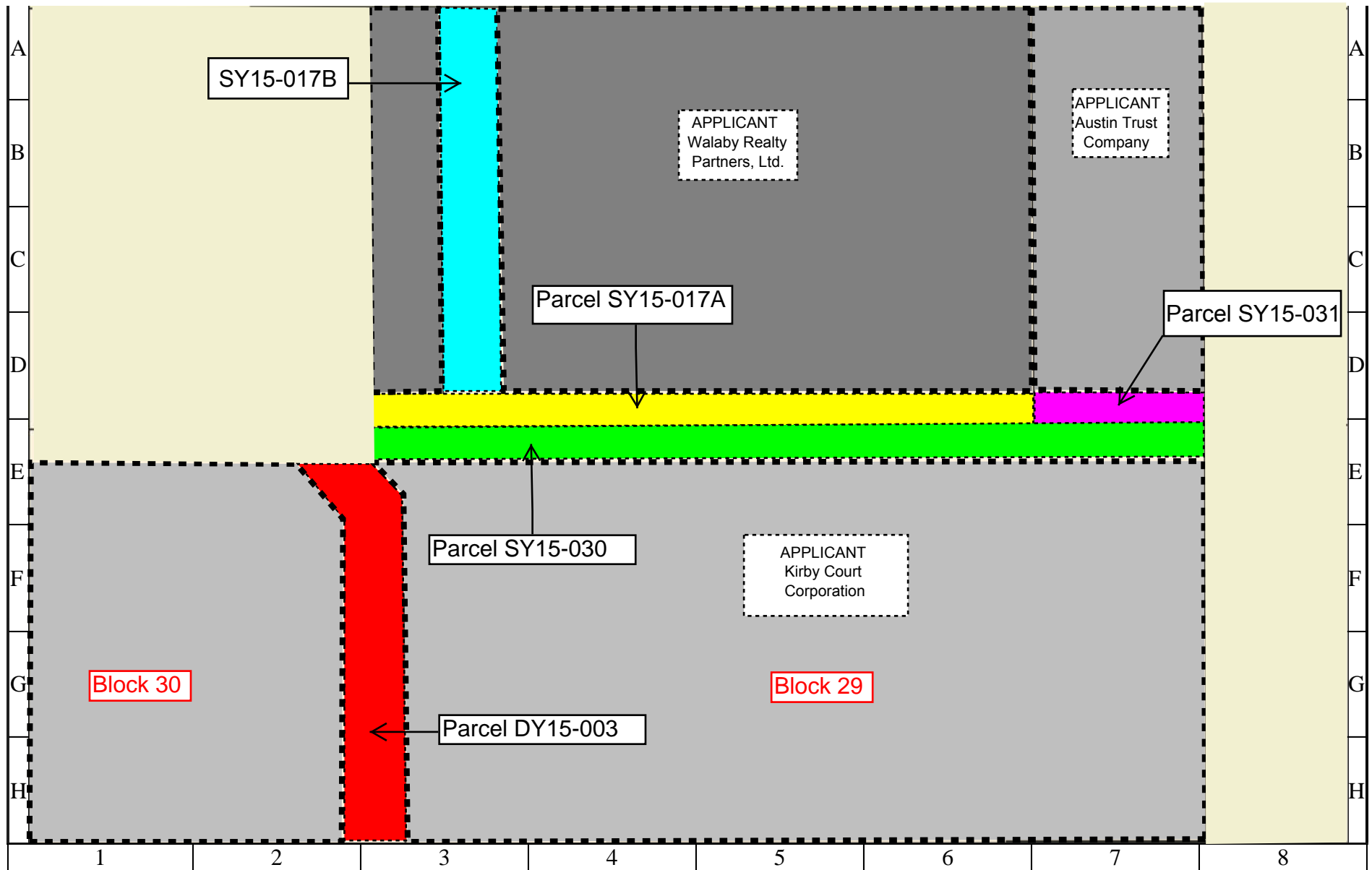





Parcel Map

Subject: Abandonment and sale of a 10 foot-wide utility easement and a 10 foot-wide sanitary sewer easement, within Lots 4 through 13, Tracts 19, 19A and 19B, in exchange for conveyance to the City of a 20 foot-wide sanitary sewer easement within Tracts 16, 16A, and 19C, all located within Blocks 29 and 30, College Heights Addition, out of the A. Reynolds Survey, A-61. **Parcels SY15-017A, SY15-017B, SY15-030, SY15-031, and DY15-003**



Legend - Property Ownership	
	Kirby Court Corporation
	Austin Trust Company
	Walaby Realty Partners, Ltd.

CITY OF HOUSTON
 Department of Public Works and Engineering
 Geographic Information & Management System (GIMS)

DISCLAIMER: THIS MAP REPRESENTS THE BEST INFORMATION AVAILABLE TO THE CITY.
 THE CITY DOES NOT WARRANT ITS ACCURACY OR COMPLETENESS.
 FIELD VERIFICATIONS SHOULD BE DONE AS NECESSARY.

