

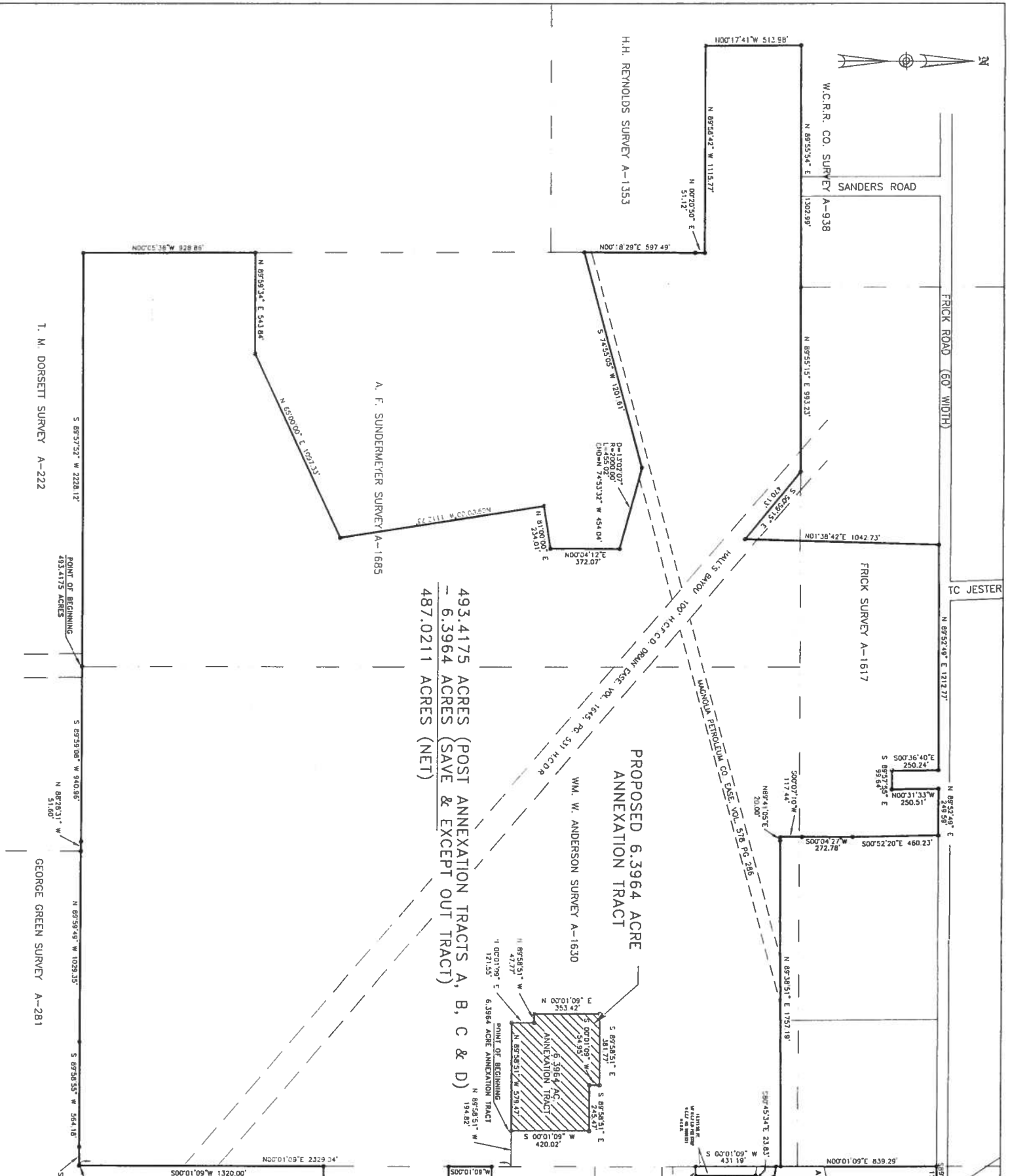
CHORD TABLE

CHORD	CENTRAL ANGLE	BOUNDS	LENGTH	RADIUS	CHORD BEARING	CHORD LENGTH
C1	2192.14	1710.81	428.10	317.67	S0824.18W	624.67
C2	2271.38	1810.91	702.70	355.83	N0807.27E	628.30

ACREAGE LEGEND

ORIGINAL DISTRICT	DATE	ACRES
NOVEMBER, 1973	436.3196	ACRES ***
SEPTEMBER, 2002	15.0001	ACRES
DECEMBER, 2004	19.985	ACRES
OCTOBER, 2008	6.2073	ACRES
OCTOBER, 2008	9.5091	ACRES
OCTOBER, 2008	487.0211	ACRES

*** LESS 6.3964 ACRE OUT TRACT



PROPOSED 6.3964 ACRE ANNEXATION TRACT TO
 DISTRICT BOUNDARY MAP
FOREST HILLS
MUNICIPAL UTILITY DISTRICT
487.0211 ACRES



BRIAN K. LUNELL, A REGISTERED PROFESSIONAL LAND SURVEYOR
 OF FOREST HILLS MUNICIPAL UTILITY DISTRICT OF HARRIS COUNTY, TEXAS.
 WITNESS MY HAND AND SEAL THIS 26 DAY OF AUGUST 2013.

THIS DOCUMENT WAS PREPARED UNDER 22 TAC 683.21, DOES NOT REFLECT THE
 OBLIGATIONS OF A REGISTERED PROFESSIONAL LAND SURVEYOR TO CONDUCT A
 SURVEY OR ESTABLISH BOUNDARIES. IT IS THE RESPONSIBILITY OF THE CLIENT TO
 OBTAIN NECESSARY PERMITS AND RECORDS FROM THE APPROPRIATE AGENCIES
 BEFORE CONSTRUCTION OF THE PROJECT OR RECORDATION OF THE BOUNDARY
 OF THE POLITICAL SUBDIVISION FOR WHICH IT WAS PREPARED.

AEI JOB NO. 070-071-001

PREPARED BY
AEI
 ENGINEERING
 616 CYPRESS CREEK PARKWAY SUITE 250
 HOUSTON, TEXAS 77090
 (281) 350-7027
 (281) 350-7035 FAX
 WWW.AEIENGINEERING.COM

W.C.R.R. CO. SURVEY, A-937
 WM. W. ANDERSON SURVEY, A-1630
 FRICK SURVEY, A-1617
 A. F. SUNDERMEYER SURVEY, A-1685
 HARRIS COUNTY, TEXAS
 SCALE 1"=300'
 AUGUST 2013