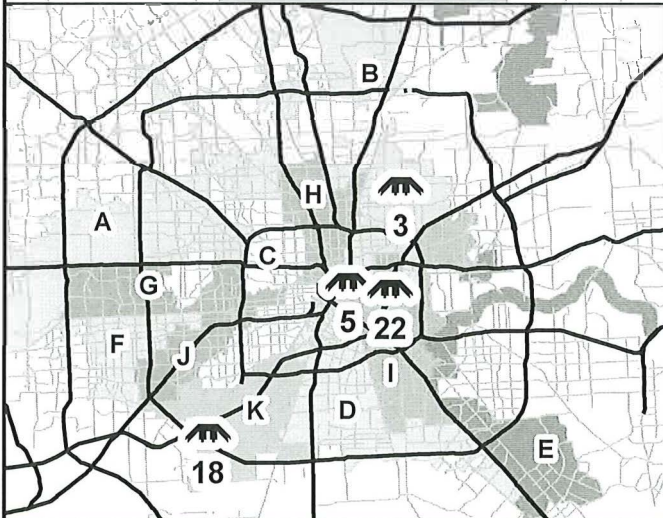
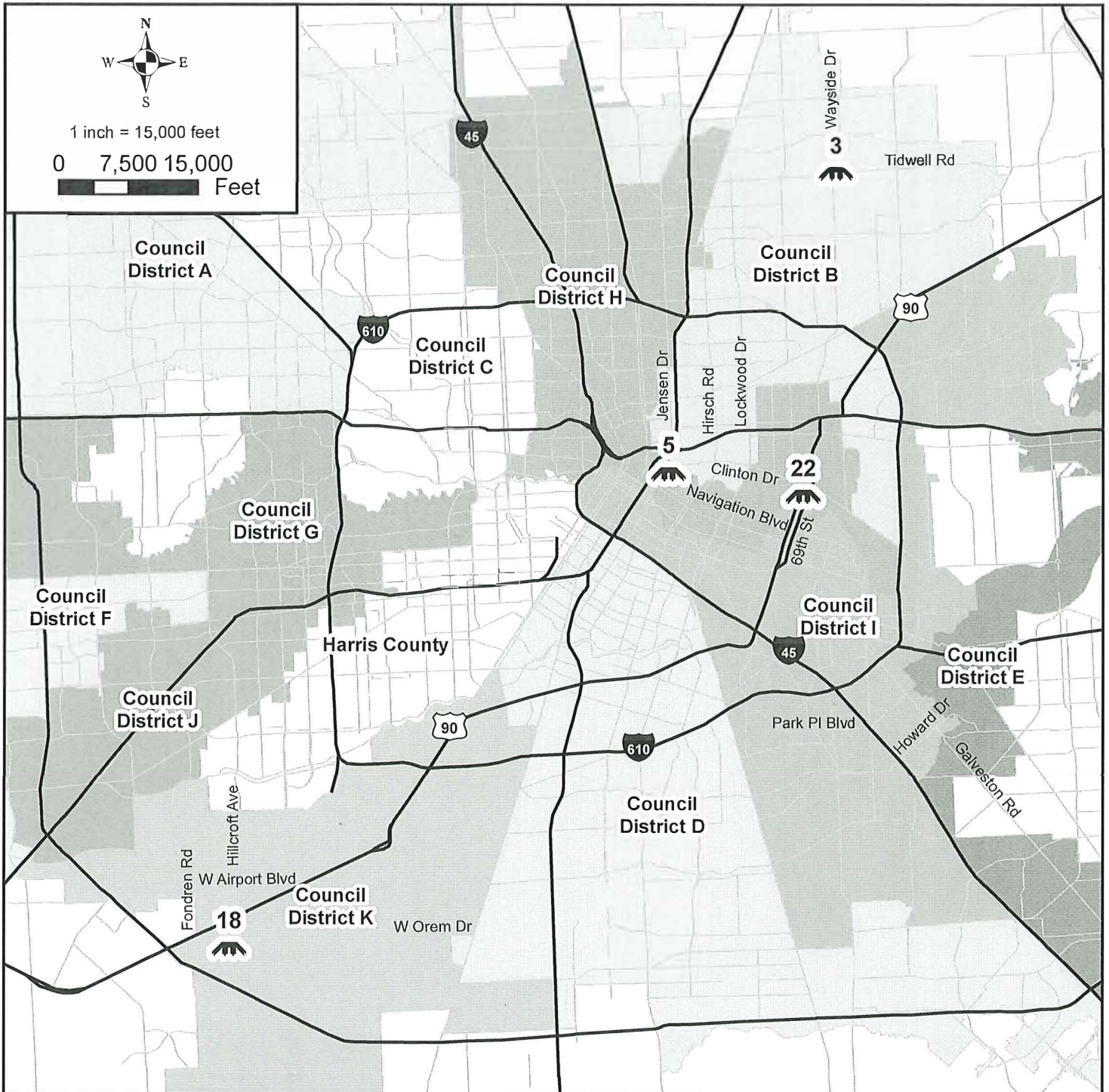




1 inch = 15,000 feet

0 7,500 15,000 Feet



# CITY OF HOUSTON

## PROJECT LOCATION MAP

WBS No. S-000701-0024-4

Rehabilitation of Above Grade Crossings Package 2

KEY MAP GRID(S): 494 J, 535 L, 455 B, 570 M, & 495 N

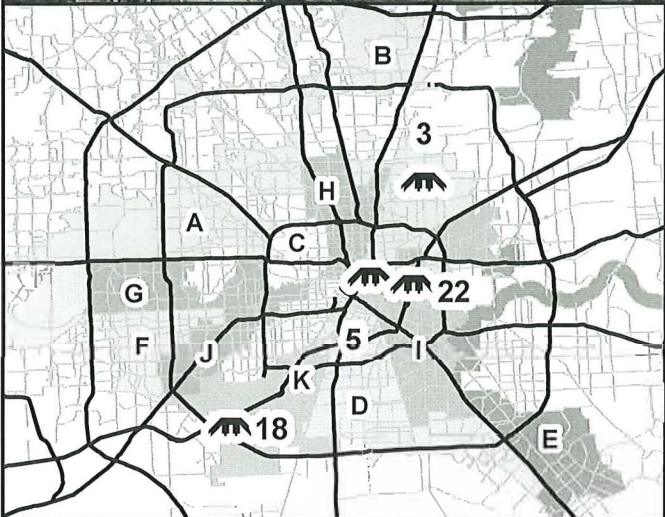
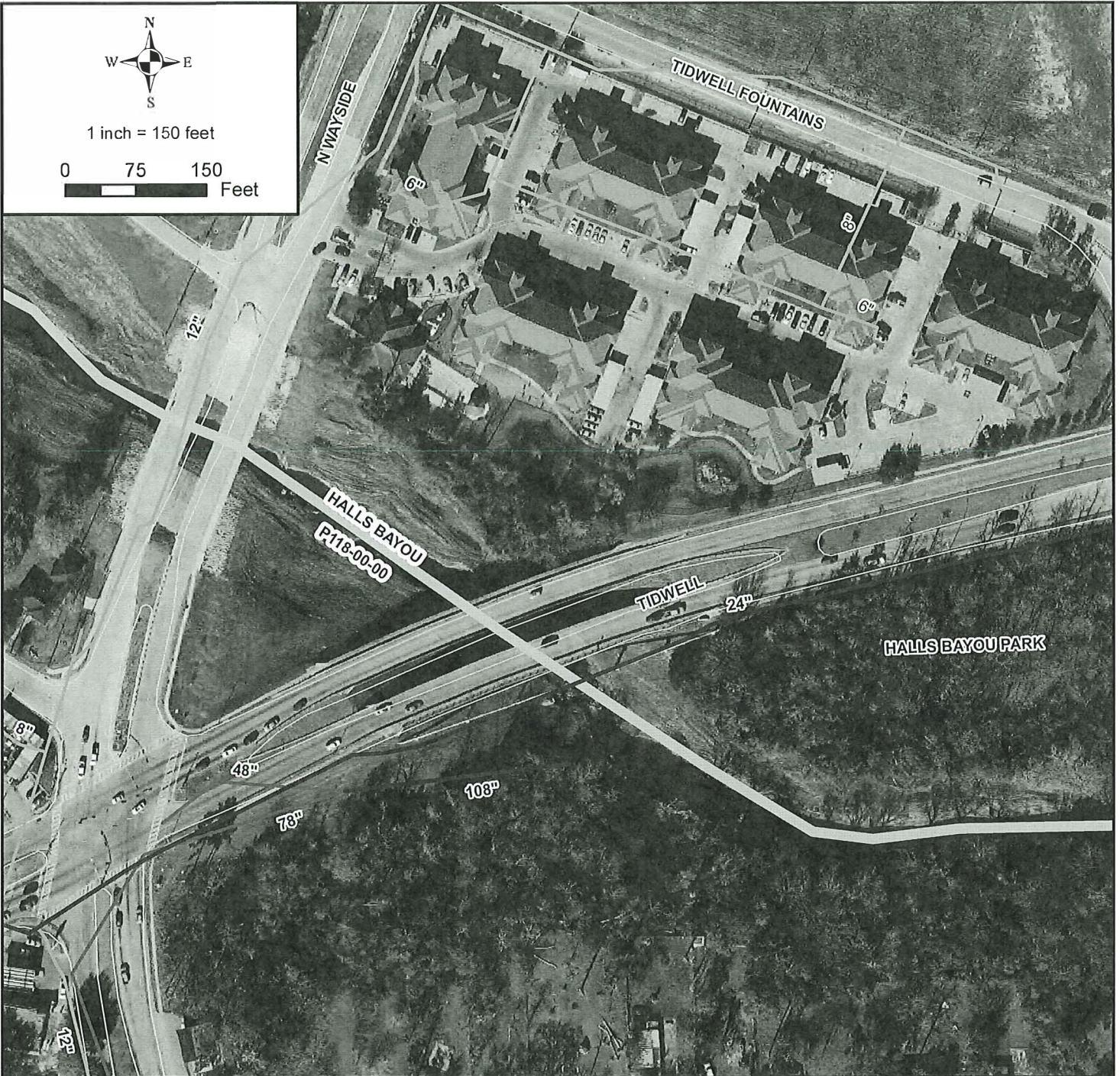
COUNCIL DISTRICT(S): B, H, I & K



2925 Briarpark Drive  
Houston, TX 77042



Surface Water Transportation Program



# CITY OF HOUSTON

WBS No. S-000701-0024-4  
 Rehabilitation of Above Grade Crossings - Pkg 2  
 Site #3 - Tidwell at Halls Bayou

KEY MAP GRID(S): 455 B  
 COUNCIL DISTRICT(S): B

## Legend

- <20" Water Lines
- 24" Water Line
- Bayou
- 48" Storm Sewer
- 78" Storm Sewer
- 108" Storm Sewer

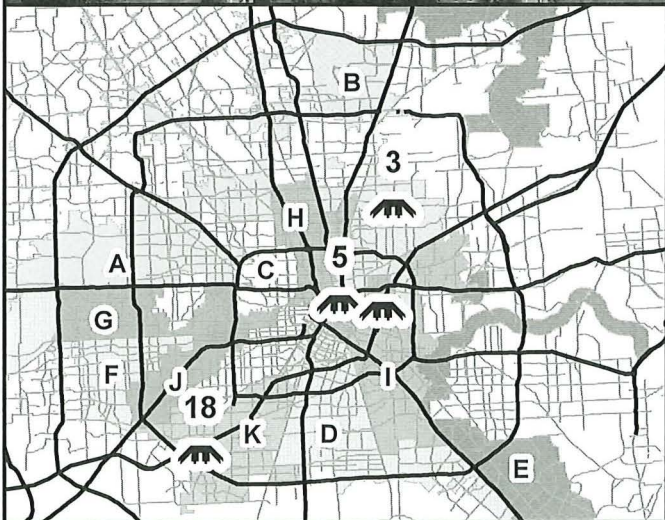
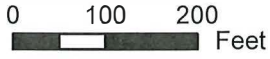


2925 Briarpark Drive  
 Houston, TX 77042





1 inch = 200 feet



# CITY OF HOUSTON

WBS No. S-000701-0024-4  
Rehabilitation of Above Grade Crossings - Pkg 2  
Site #18 - W. Orem at HCFCD Ditch No. C157-00-00  
KEY MAP GRID(S): 570 M  
COUNCIL DISTRICT(S): K

## Legend

- 24" Water Line
- 30" WCL
- <20" Water Lines
- Bayou



2925 Briarpark Drive  
Houston, TX 77042



