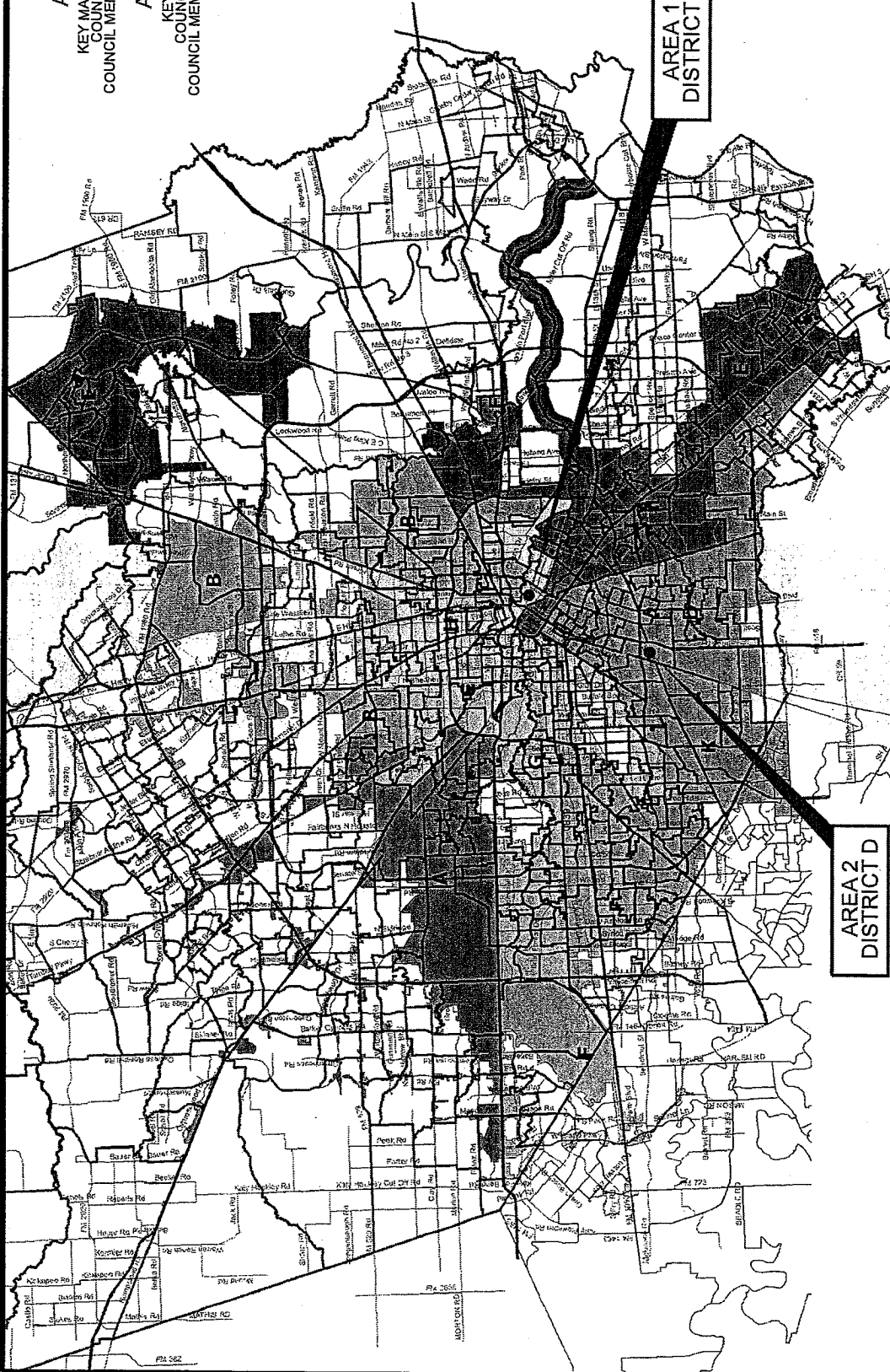


**AREA 1**

KEY MAP 493-R, 494-J&N  
COUNCIL DISTRICT H  
COUNCIL MEMBER: ED GONZALEZ

**AREA 2**

KEY MAP 533-S  
COUNCIL DISTRICT D  
COUNCIL MEMBER: WANDA ADAMS



**AREA 2  
DISTRICT D**

**AREA 1  
DISTRICT H**

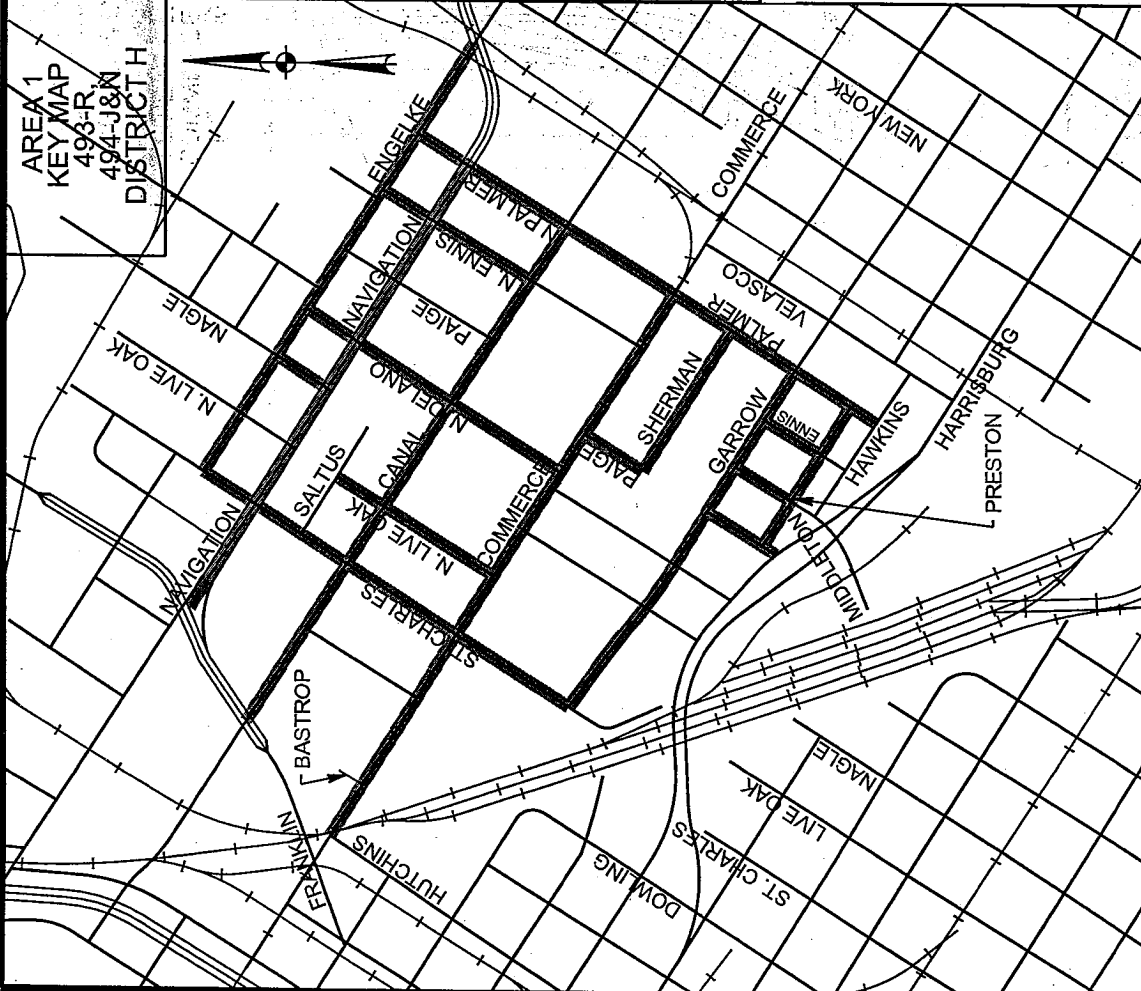


**WATER LINE REPLACEMENT IN COMMERCE AREA  
WBS NO. S-000035-0153-4**

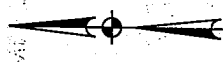
**COUNCIL DISTRICT MAP**

**SANDER ENGINEERING CORPORATION**  
 1250 W SAK HOUSTON PKTY S.  
 SUITE 400  
 HOUSTON, TEXAS, 77042  
 (713) 784-4880

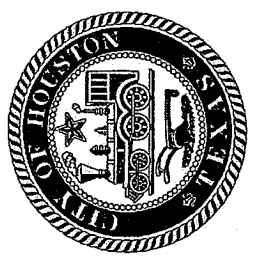
TEXAS BOARD OF PROFESSIONAL ENGINEERS REG. NO. F-577  
 DATE: OCTOBER, 2013 SCALE: N/A



AREA 1  
KEY MAP  
493-R,  
494-J&N  
DISTRICT H

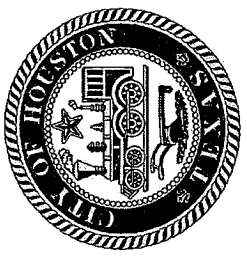
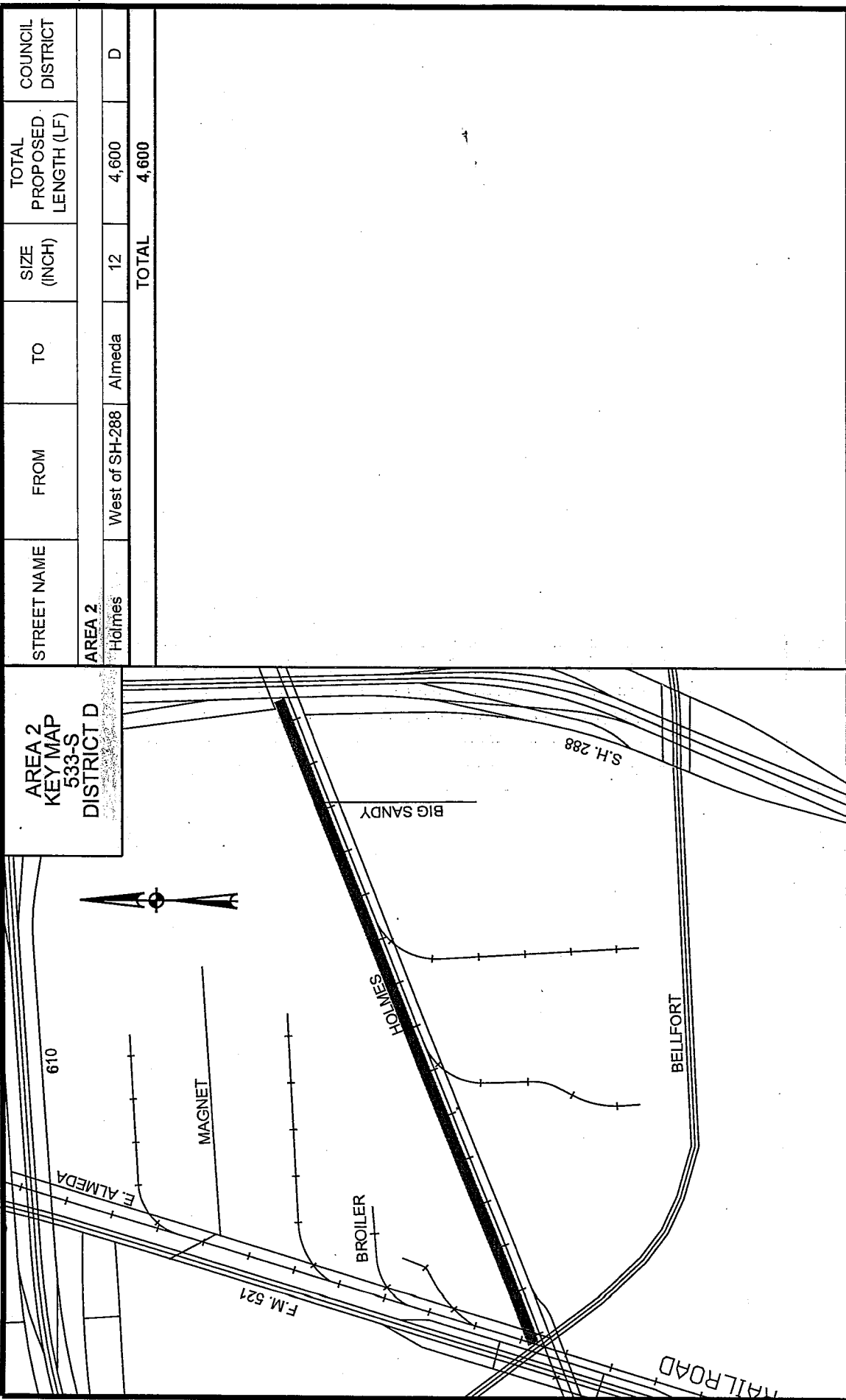


STREET NAME	FROM	TO	SIZE (INCH)	TOTAL PROPOSED LENGTH (LF)	COUNCIL DISTRICT
<b>AREA 1</b>					
Navigation	N. Palmer	Jensen	12	2,300	H
Canal	N. Palmer	Navigation	12	2,660	H
Commerce	N. Palmer	Hutchins	8	3,050	H
Sherman	Palmer	Paige	8	750	H
Garrow	Palmer	St. Charles	12	1,900	H
Preston	Palmer	Paige	8	800	H
Engelage	Navigation	St. Charles	8	2,250	H
Nagle	Engelage	Navigation	8	280	H
St. Charles	Engelage	Garrow	8	2,020	H
N. Live Oak	Saltus	Commerce	8	820	H
N. Delano	Engelage	Commerce	8	1,380	H
Paige	Commerce	Sherman	8	330	H
Paige	Garrow	Harrisburg	8	400	H
Middleton	Garrow	Preston	8	340	H
Ennis	Garrow	Preston	8	340	H
N. Ennis	Engelage	Canal	8	860	H
N. Palmer	Engelage	Commerce	8	1,400	H
Palmer	Commerce	Hawkins	8	1,120	H
<b>TOTAL</b>				<b>23,000</b>	



**CITY OF HOUSTON**  
 DEPARTMENT OF PUBLIC WORKS AND ENGINEERING  
 WATER LINE REPLACEMENT IN  
 COMMERCE AREA  
 WBS NO. S-000035-0153-4

EXHIBIT B-1  
 COMMERCE VICINITY MAP  
**SANDER ENGINEERING CORPORATION**  
 1250 W SAM HOUSTON PKWY S.  
 SUITE 400  
 HOUSTON TEXAS 77042  
 (713) 784-1800  
 TEXAS BOARD OF PROFESSIONAL ENGINEERS FIRM NO. F51T  
 DATE: OCTOBER, 2015 SCALE: NTS



**CITY OF HOUSTON**  
**DEPARTMENT OF PUBLIC WORKS AND ENGINEERING**

WATER LINE REPLACEMENT IN  
 COMMERCE AREA  
 WBS NO. S-000035-0153-4

EXHIBIT B-2

HOLMES VICINITY MAP

**SANDER ENGINEERING CORPORATION**  
 1250 W SAM HOUSTON PKWY S.  
 SUITE 400  
 HOUSTON TEXAS, 77042  
 (713) 784-4830

TEXAS BOARD OF PROFESSIONAL ENGINEERS FIRM NO. F-517

DATE: OCTOBER, 2015 SCALE: NTS