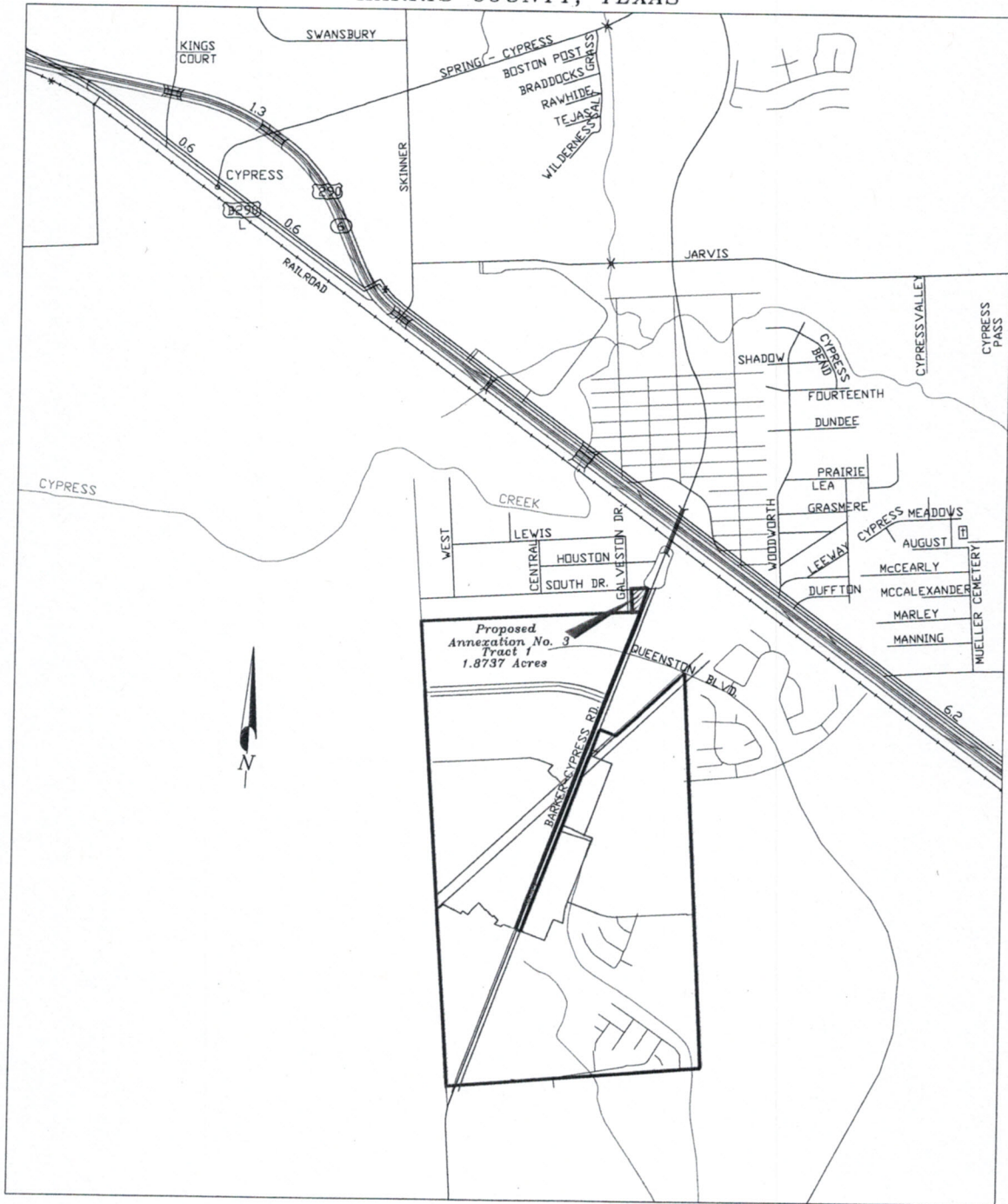


VICINITY MAP OF
 PROPOSED ANNEXATION NO. 3, TRACT 1
 TO BE ANNEXED INTO
 HARRIS COUNTY MUNICIPAL UTILITY DISTRICT No. 196
 BEING 1.8737 ACRES OF LAND
 OUT OF THE W. K. HAMBLIN SURVEY, ABSTRACT 316
 HARRIS COUNTY, TEXAS



SCALE: 1" = 2640'
 KEY MAP 367P

LEGEND

 HARRIS COUNTY MUNICIPAL UTILITY DISTRICT No. 196
 PROPOSED ANNEXATION

SEPTEMBER, 2015