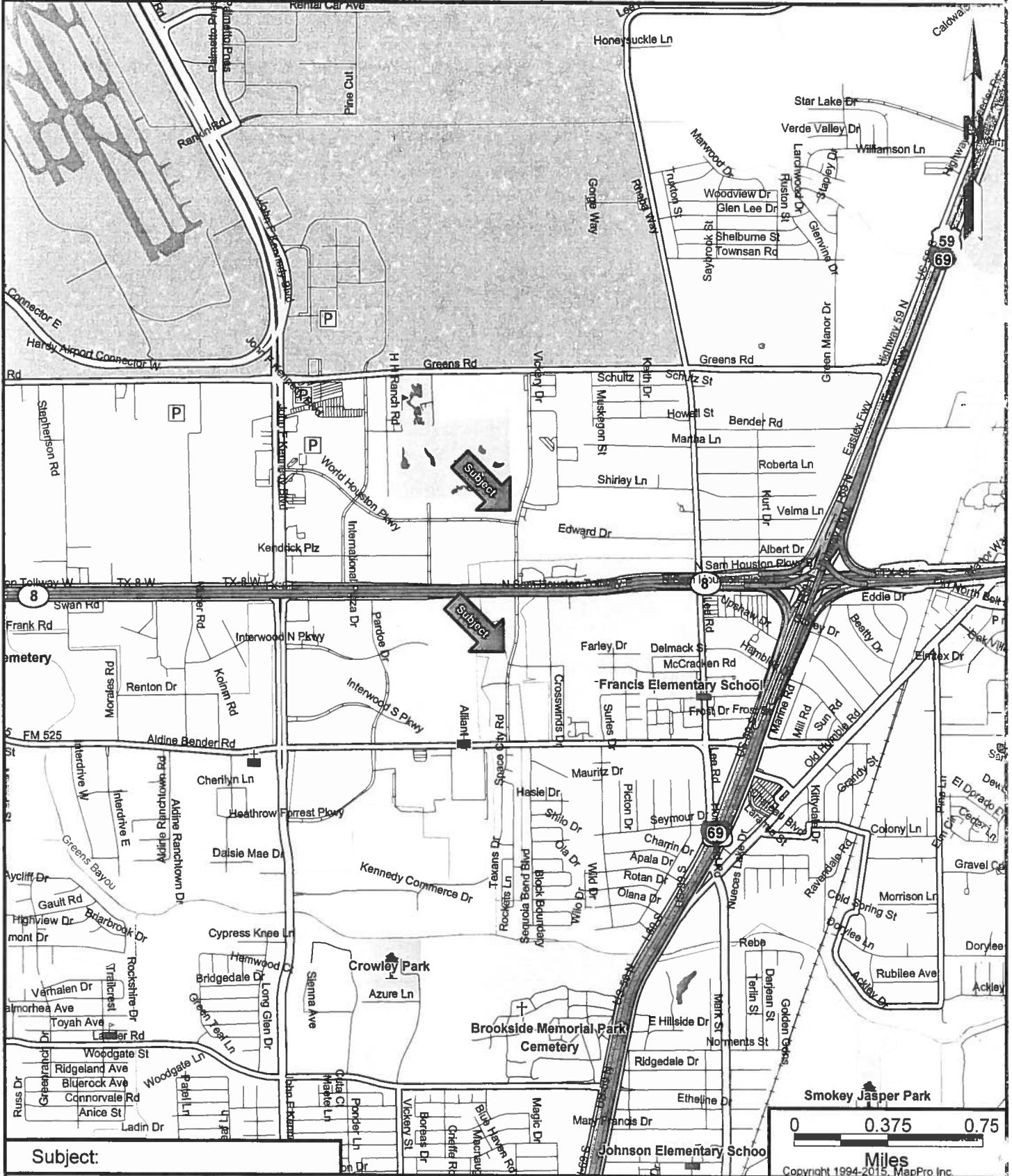


LOCATION MAP

Description: EASEMENT ACQUISITION FOR 54-INCH WATERLINE ALONG VICKERY DRIVE FROM AEROPARK TO WORLD HOUSTON PARKWAY PROJECT; WBS# S-000900-0127-2-01; Key Map 374U, V

Prepared by: City of Houston, 611 Walker, 19th Floor, Houston, TX 77002



Subject:

CAUTION:

The location of property arrows shown on this map are approximate only. Inaccuracies may exist on map such as missing, incorrectly drawn or incorrectly addressed streets. Please report any such inaccuracy to MapPro, Inc. so that appropriate corrections can be made.

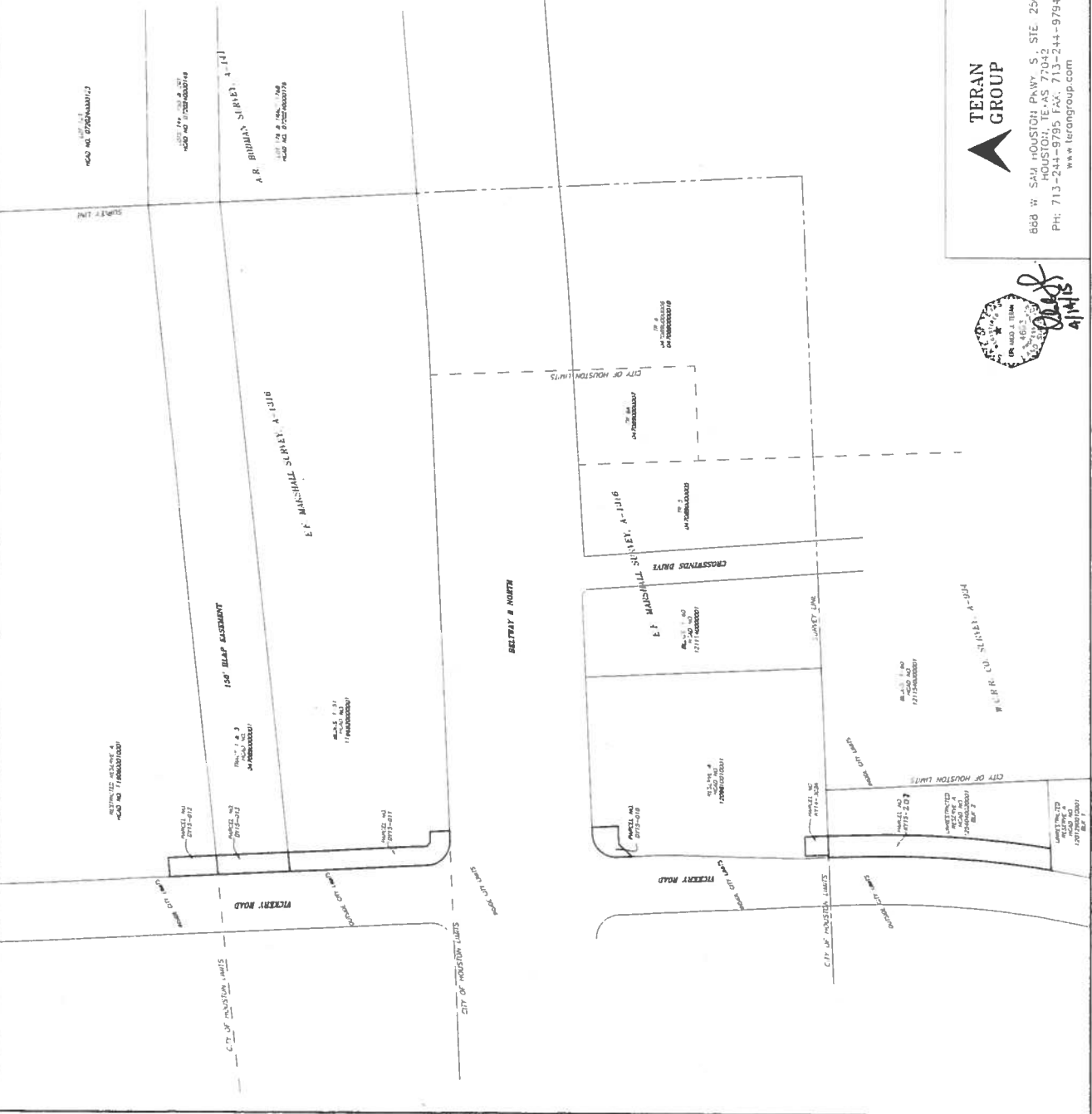


- LEGEND**
- SET MONUMENT
 - FOUND IRON PIN
 - FOUND IRON PIPE
 - POINT OF BEGINNING
 - PROPERTY LINE
 - PAZ
 - F.C. (FENCED CORNER)
 - H.C.M.R. (HARRIS COUNTY MAP RECORD)
 - H.C.M.R. (HARRIS COUNTY MAP RECORD)
 - H.C.M.R. (HARRIS COUNTY MAP RECORD)
 - H.C.M.R. (HARRIS COUNTY MAP RECORD)

H.C.M.R. NO. 0115-011 & 015-012 PARCELS NO. 0115-0-0, 0115-011 & 015-012

Sheet 1A
CITY OF HOUSTON
PUBLIC WORKS AND
ENGINEERING DEPARTMENT

DATE	2-2-15
PROJECT NO.	1207
SCALE	AS SHOWN
DATE	2-2-15
PROJECT NO.	1207
SCALE	AS SHOWN



COVER SHEET
 SANITARY SEWER EASEMENT, PARCEL NOS. 0115-010, 0115-011, 0115-012 & 0115-013
 WATER LINE EASEMENT
 PARCEL NOS. 0115-007 & 0114-3024
 W.C.R. CO. SURVEY A-1116
 & E.F. MARSHALL SURVEY A-1116
 HARRIS COUNTY, TEXAS



TERAN GROUP
 668 W. SAM HOUSTON Pkwy, S. STE. 250
 HOUSTON, TEXAS 77042
 PH: 713-244-9795 FAX: 713-244-9794
 www.terangroup.com

