

KEY MAP:
 SAN FELIPE L.S.: 491N
 BERING L.S.: 491P



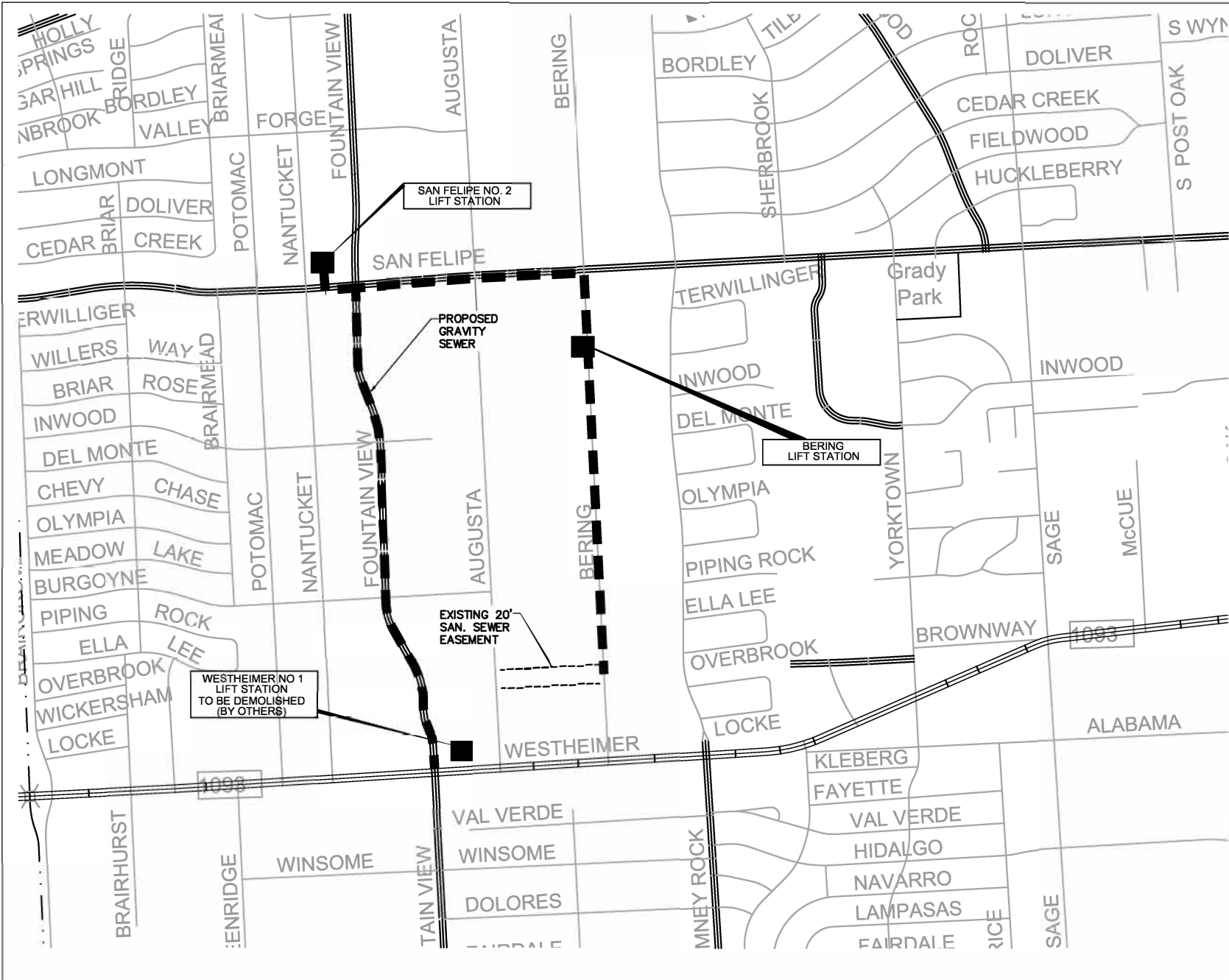
OTHON, INC. T&PE NO. F-1471
 11111 Wilcrest Green Dr. Suite 128, Houston, TX 77042 TEL 713 975 8555
 CONSULTING ENGINEERS www.othon.com



CITY OF HOUSTON
 DEPARTMENT OF PUBLIC WORKS AND ENGINEERING

ABANDONMENT OF BERING AND SAN FELIPE LIFT STATION

EXHIBIT 1
 LOCATION MAP



KEY MAP:
 SAN FELIPE L.S.: 491N
 BERING L.S.: 491P



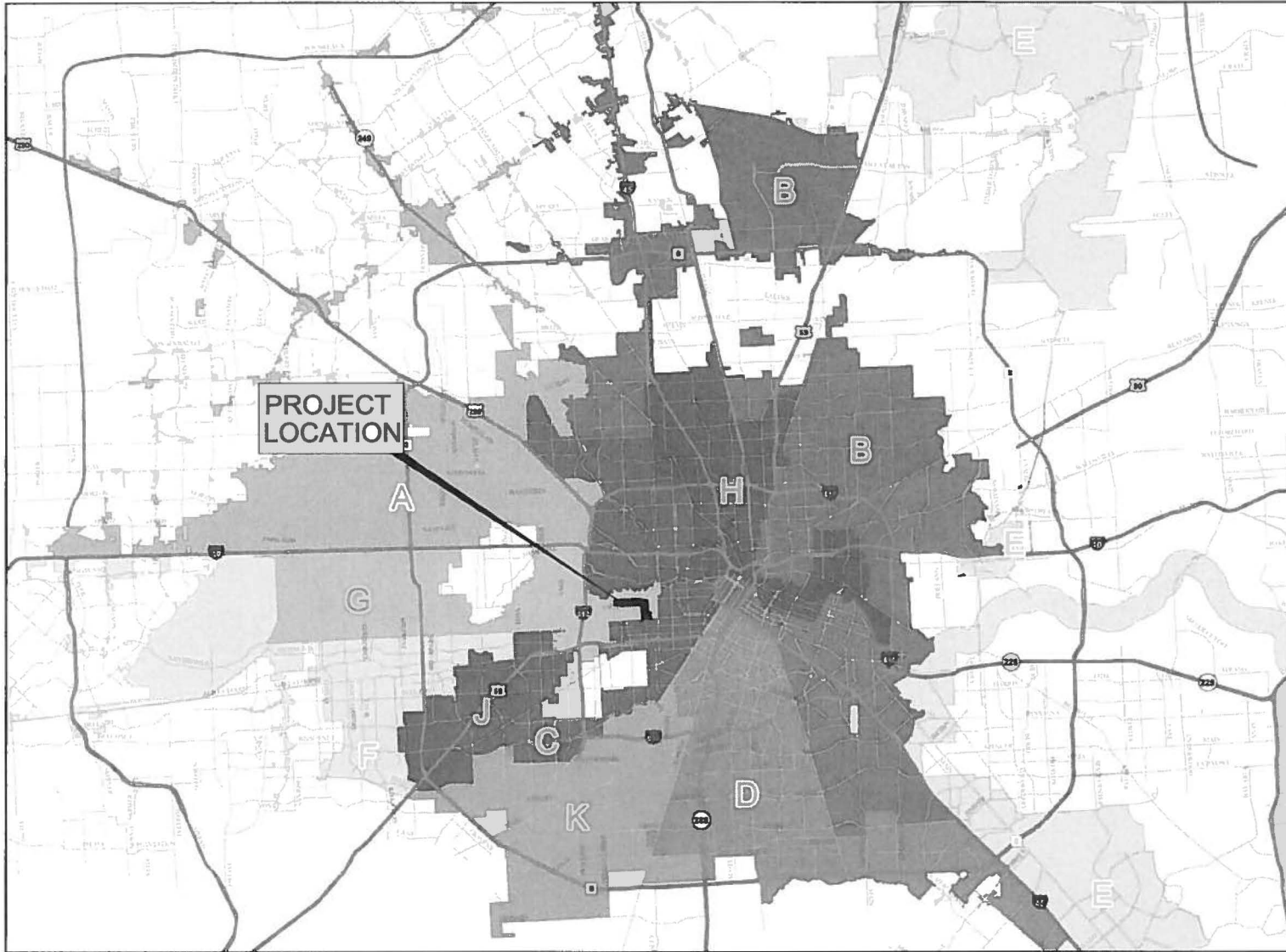
OTHON, INC.
 11111 Wilcrest Green Dr. Suite 128, Houston, TX 77042 TEL 713 975 8555
 CONSULTING ENGINEERS www.othon.com



CITY OF HOUSTON
 DEPARTMENT OF PUBLIC WORKS AND ENGINEERING

ABANDONMENT OF BERING AND SAN FELIPE LIFT STATION

EXHIBIT 2
 VICINITY MAP



NOTE: THE PROJECT IS IN COUNCIL DISTRICTS C AND G.

A Amani Engineering, Inc.
 • Engineers • Surveyors • Construction Managers



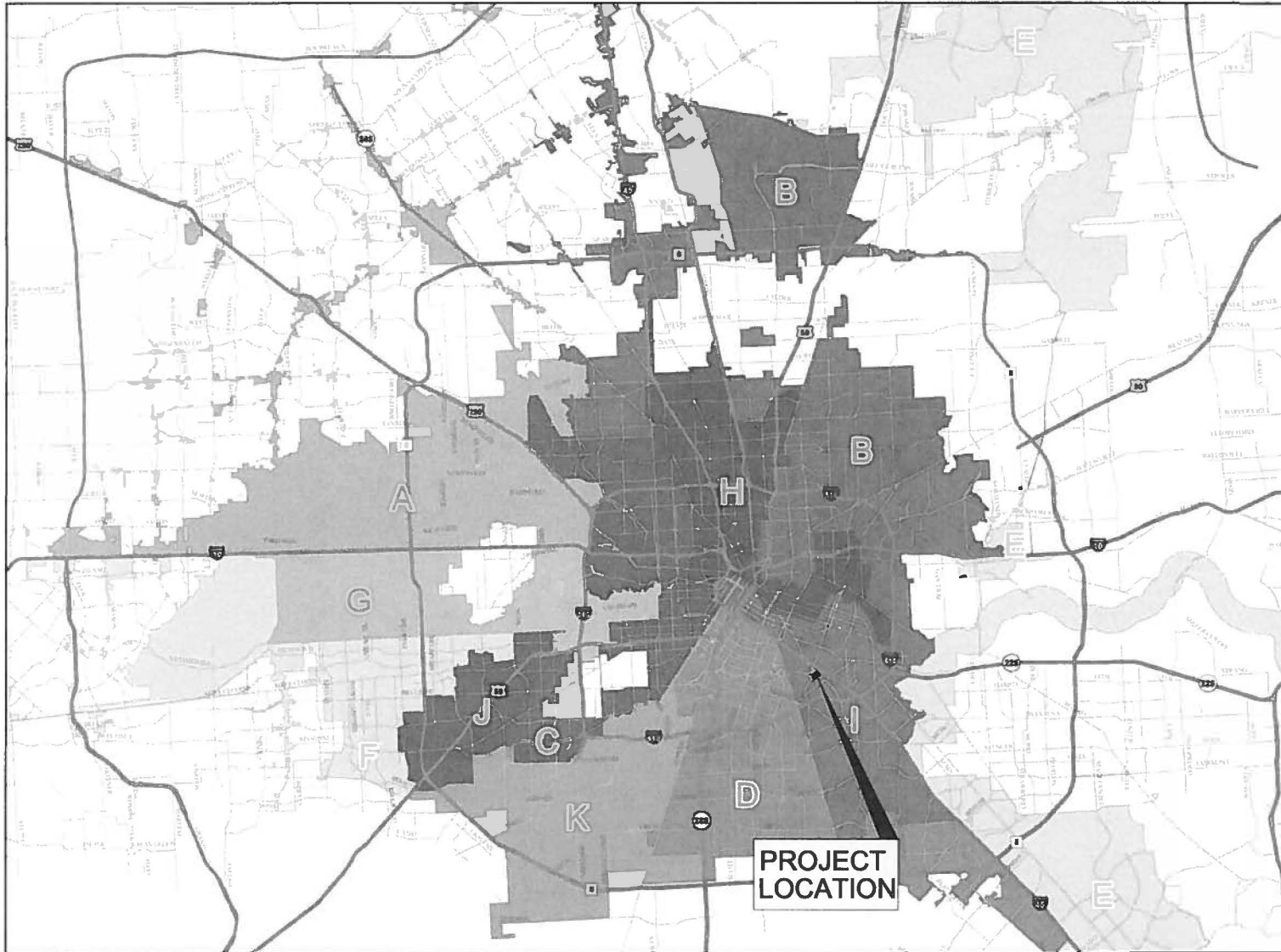
CITY OF HOUSTON
 WASTEWATER FORCE MAIN RENEWAL AND REPLACEMENT
 SLEEPY HOLLOW AND TELEPHONE ROAD NO. 1 LIFT STATION
 WBS R-000035-0012-4

EXHIBIT B - PROJECT LOCATION
 COUNCIL DISTRICT - G

SCALE: NTS

Various Citywide Water and Wastewater Systems Projects

WBS No. R-000020-0065-4



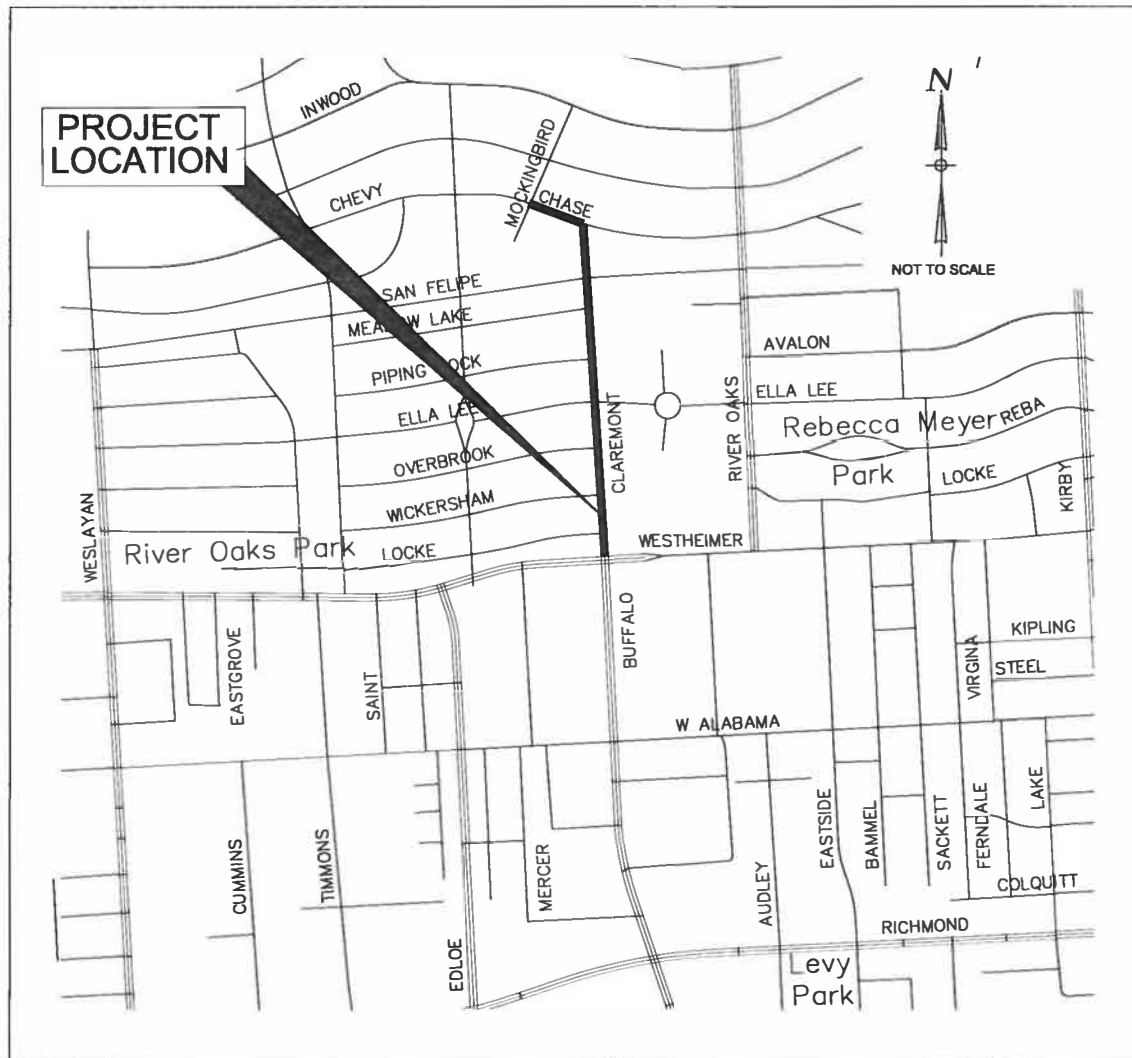
NOTE: THE PROJECT IS IN COUNCIL DISTRICT I.



CITY OF HOUSTON
 WASTEWATER FORCE MAIN RENEWAL AND REPLACEMENT
 SLEEPY HOLLOW AND TELEPHONE ROAD NO. 1 LIFT STATION
 WBS R-000035-0012-4

EXHIBIT E - PROJECT LOCATION
 COUNCIL DISTRICT - I

SCALE: NTS



SLEEPY HOLLOW LIFT STATION VICINITY MAP

KEY MAP NO. 492P & T

GIMS MAP NO. 5257 C & D AND 5256B

ZIP CODE: 77019, 77027 AND 77098

COUNCIL DISTRICT - G

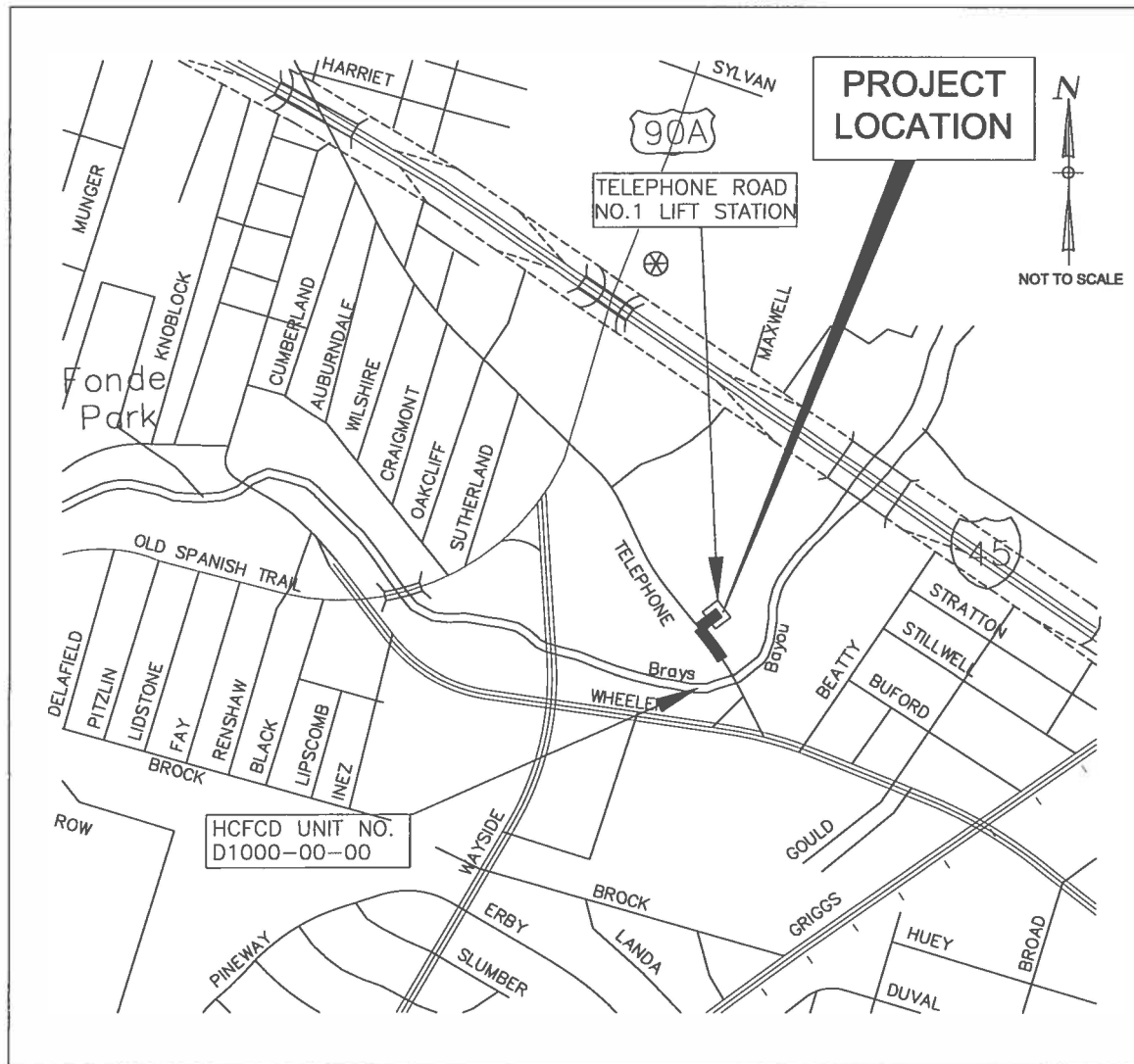
NOTE: THE PROJECT IS IN COUNCIL DISTRICTS C AND G.



CITY OF HOUSTON
 WASTEWATER FORCE MAIN RENEWAL AND REPLACEMENT
 SLEEPY HOLLOW AND TELEPHONE ROAD NO. 1 LIFT STATION
 WBS R-000035-0012-4

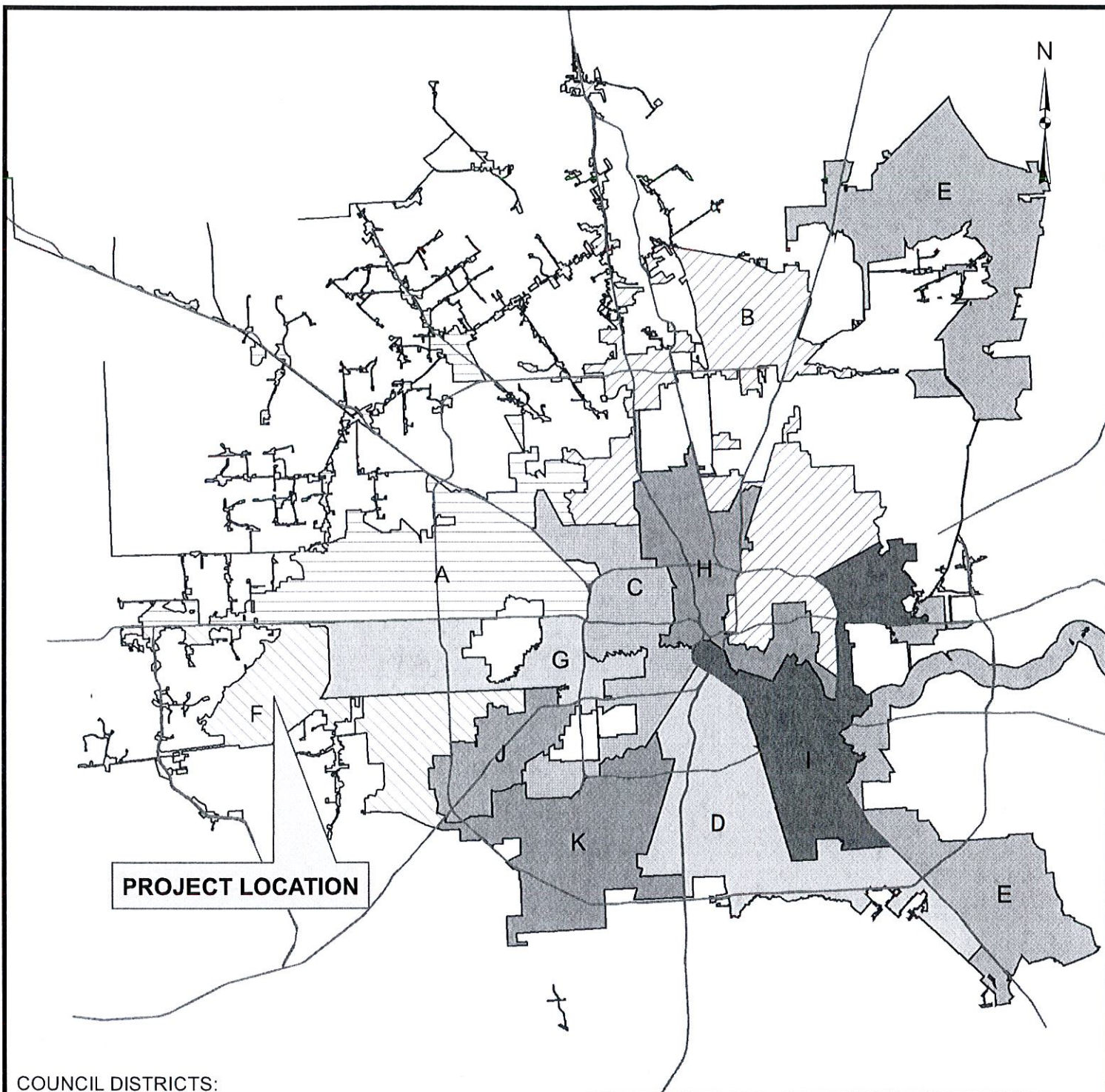
EXHIBIT D - VICINITY MAP
 COUNCIL DISTRICT - G

SCALE: NTS



TELEPHONE ROAD NO. 1 LIFT STATION VICINITY MAP
 KEY MAP NO. 534G
 GIMS MAP NO. 5555A & C
 ZIP CODE: 77023
 COUNCIL DISTRICT- I





COUNCIL DISTRICTS:

- A - BRENDA STARDIG
- B - JERRY DAVIS
- C - ELLEN R. COHEN
- D - DWIGHT BOYKINS
- E - DAVID MARTIN
- F - RICHARD NGUYEN
- G - OLIVER PENNINGTON
- H - EDWARD GONZALEZ
- I - ROBERT GALLEGOS
- J - MIKE LASTER
- K - LARRY V. GREEN

- AT LARGE POSITION 1-STEPHEN C. COSTELLO
- AT LARGE POSITION 2-DAVID ROBINSON
- AT LARGE POSITION 3-MICHAEL KUBOSH
- AT LARGE POSITION 4-C.O. "BRAD" BRADFORD
- AT LARGE POSITION 5-JACK CHRISTIE



CITY OF HOUSTON
 DEPARTMENT OF PUBLIC WORKS
 AND ENGINEERING
 ENGINEERING & CONSTRUCTION DIVISION

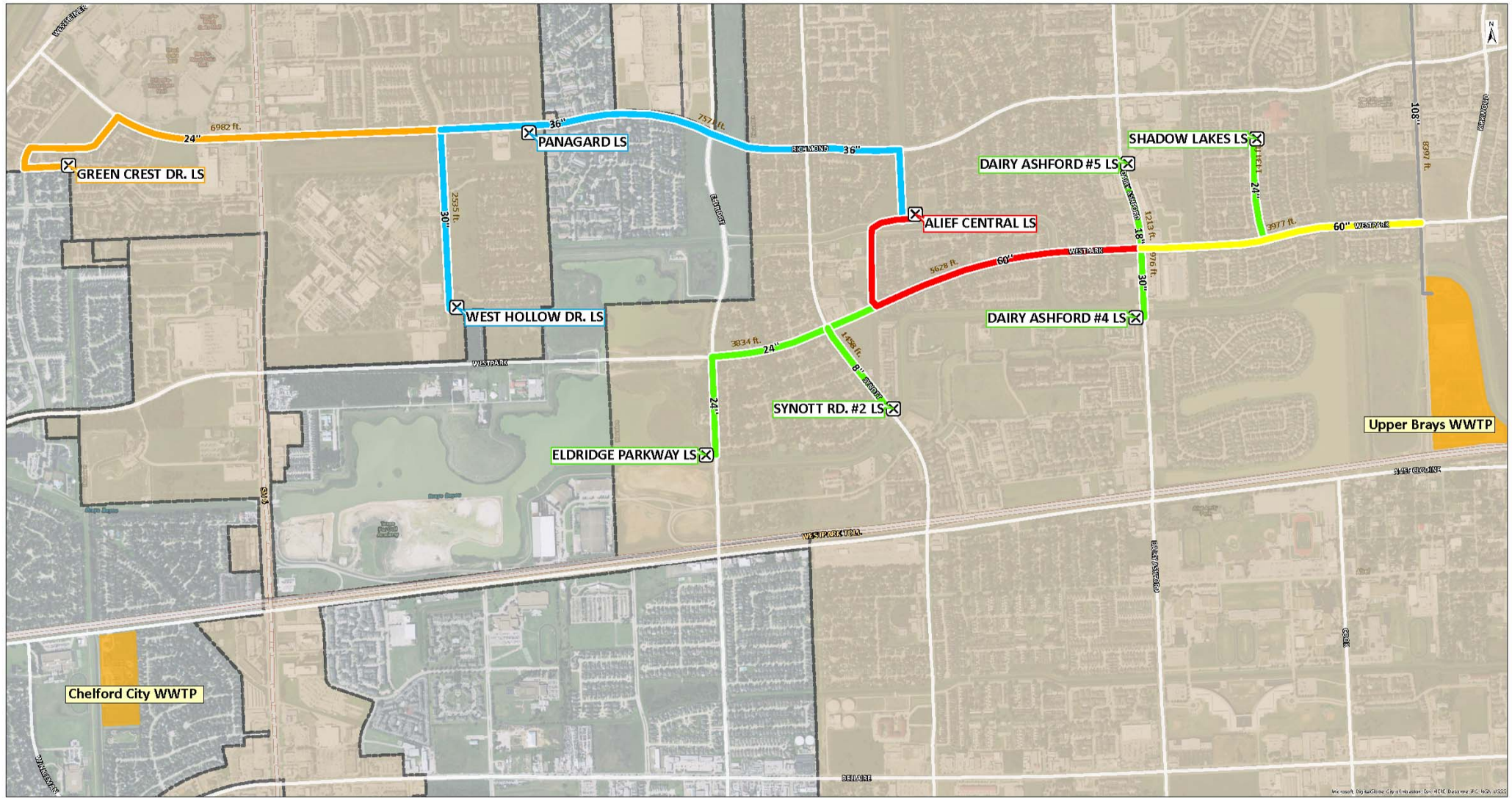
PROJECT LOCATION MAP

WBS No. R-000536-0027-3
FACILITIES CONSOLIDATION: CHELFORD CITY
DIVERSION PACKAGE 2








KEY MAP GRID(S): 487Z, 488W, 488X, 488Y
 COUNCIL DISTRICT(S): F

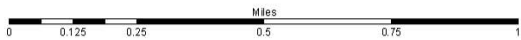


2925 Briarpark Drive
 Houston, Tx 77042

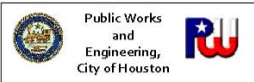


CHELFORD CITY DIVERSION PROJECT OVERVIEW

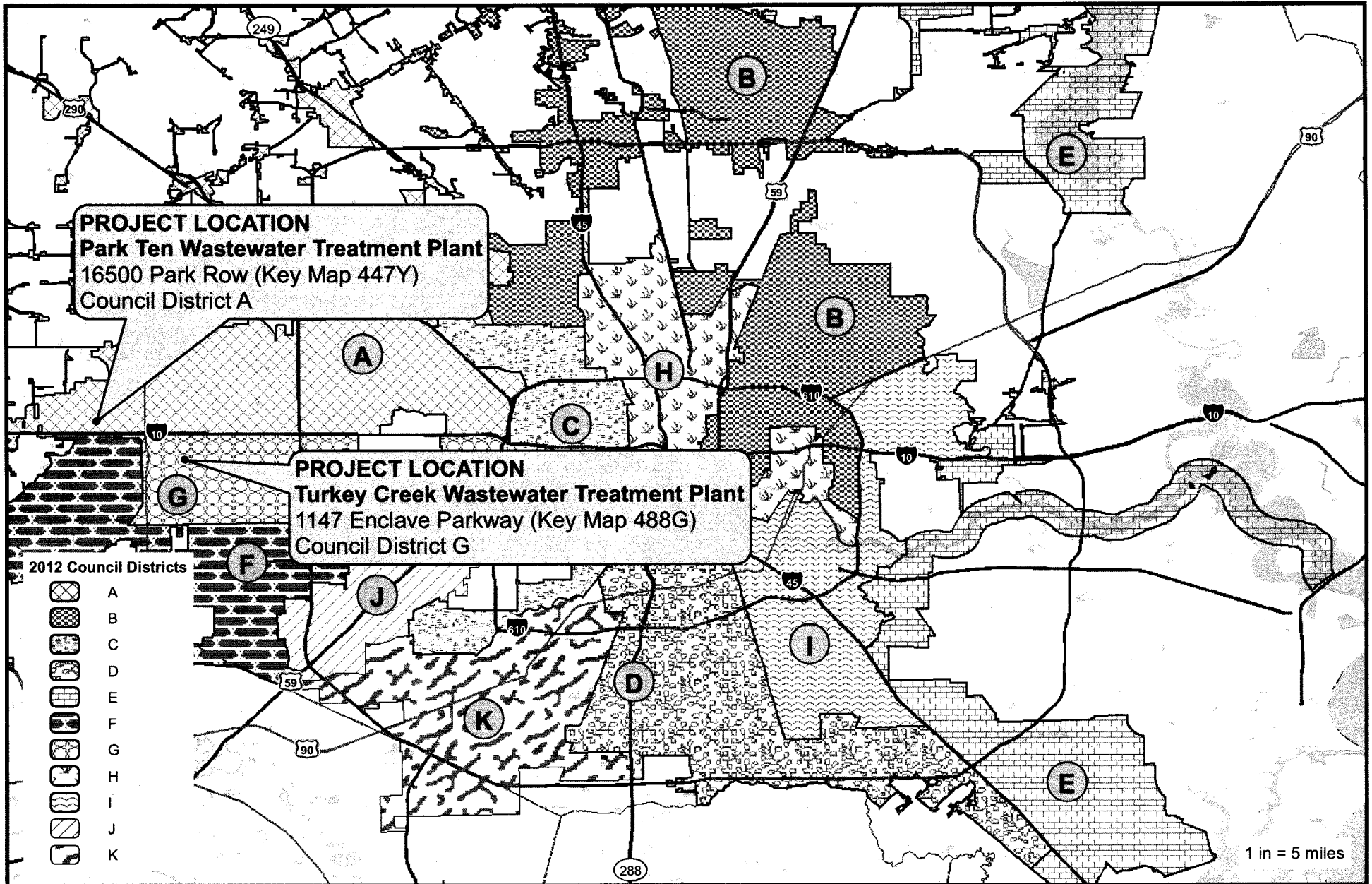
- Legend**
-  Lift stations to be eliminated
 -  City of Houston Boundary
 - Diversion Sewer Route**
 -  N-000815-0001
 -  R-000536-0024
 -  R-000536-0027
 -  R-00536-0029
 -  Phase TBD



Disclaimer
 This map is made available for reference purposes only and should not be substituted for a survey product. The city of Houston will not accept liability of any kind in conjunction with its use.



By: Infrastructure Planning Branch



Location Map

Park Ten WWTP Abandonment and Flow Diversion to Turkey Creek WWTP - WBS No. R-000536-0019-3

