

Project Area List

20PMO180-N-321040-0065-4

Work Authorization	Location	Council District
1	Polk St from Cullen Blvd to Lockwood Dr.	I
2	Greater Inwood	A
3	W Gray from Montrose to Dunlavy	C
4	Jensen Dr from Bennington St to Kelley St	H
5	Bissonnet St from Academy St to Edloe St	C
6	S <u>Braeswood</u> Blvd from S Gessner Dr to Braes Bayou Dr	K



- Work Authorization No. 3 was cancelled and reassigned to another project.

Polk St. from Cullen Blvd. to Lockwood Dr.



Legend

CITY OF HOUSTON
Houston Public Works
WBS N-321040-0065-4
Work Authorization #1
Council District 1



The following data sets were generated by and for the Houston Public Works Department. The asset information within this map are continually being updated, refined and are being provided to your organization for official use only and remains the property of the Houston Public Works Department. Providing this document to you does not constitute a release under the Freedom of Information Act (5 U.S.C. Section) 552, and due to the sensitivity of the information, this document must be appropriately safeguarded. PLEASE NOTE that these data sets are NOT intended to be used as an authoritative public record for any geographic location or as a legal document and have no legal force or effect. Users are responsible for checking the accuracy, completeness, currency and/or suitability of these datasets themselves. The Department makes no representation, guarantee or warranty as to the accuracy, completeness, currency, or suitability of these datasets, which are provided "AS IS".

5/24/2024 10:12:04 AM

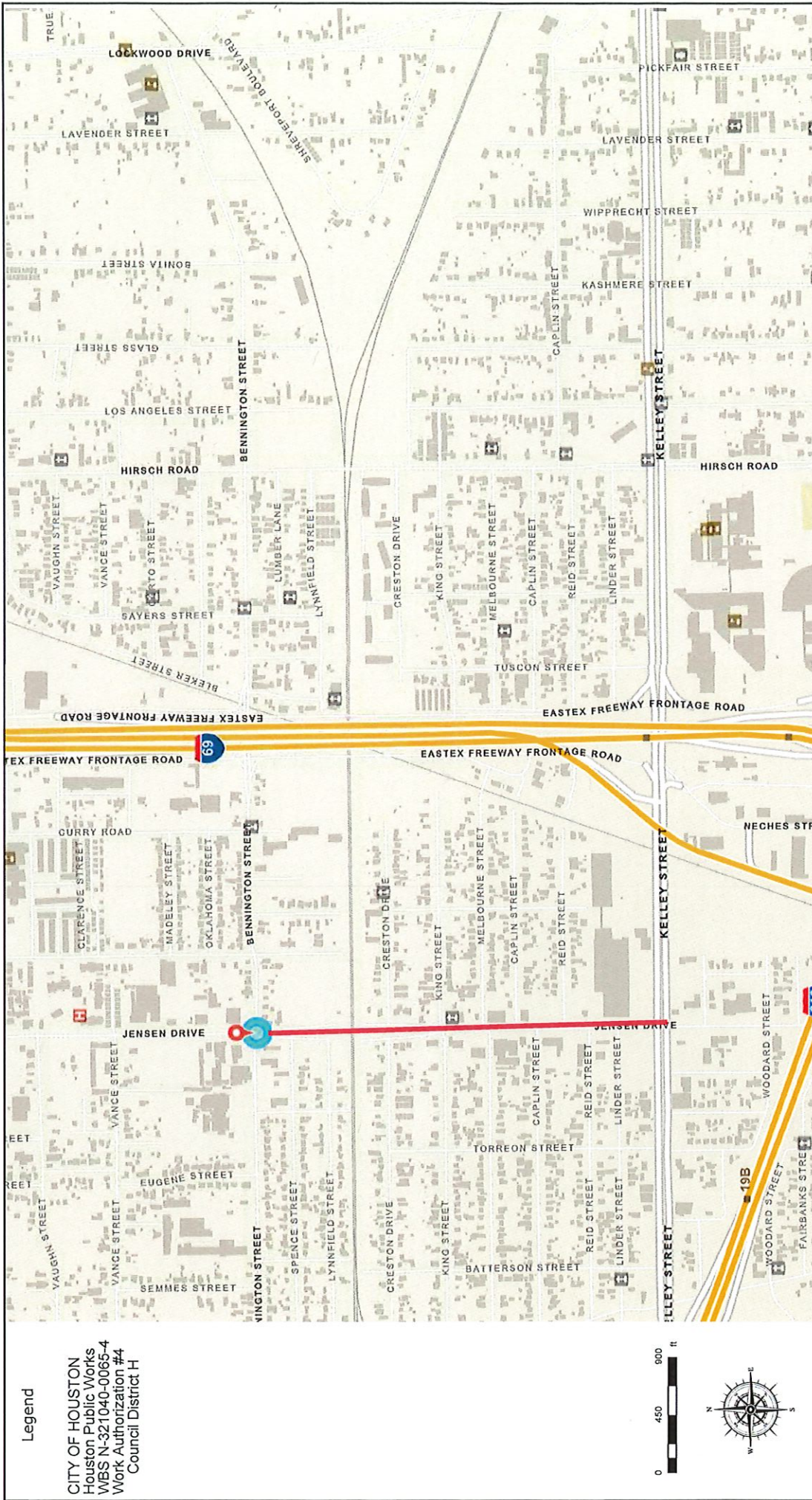
Greater Inwood

CITY OF HOUSTON
Houston Public Works
WBS N-321040-0065-4
Work Authorization #2
Council District A



The following data sets were generated by and for the Houston Public Works Department. The asset information within this map are continually being updated, refined and are being provided to your organization for official use only and remains the property of the Houston Public Works Department. Providing this document to you does not constitute a release under the Freedom of Information Act (5 U.S.C. [section] 552), and due to the sensitivity of the information, this document must be appropriately safeguarded. PLEASE NOTE that these data sets are NOT intended to be used as an authoritative public record for any geographic location or as a legal document and have no legal force or effect. Users are responsible for checking the accuracy, completeness, currency and/or suitability of these datasets themselves. The Department makes no representation, guarantee or warranty as to the accuracy, completeness, currency, or suitability of these datasets, which are provided "AS IS".

Jensen Dr. from Bennington St. to Kelley St.



Legend

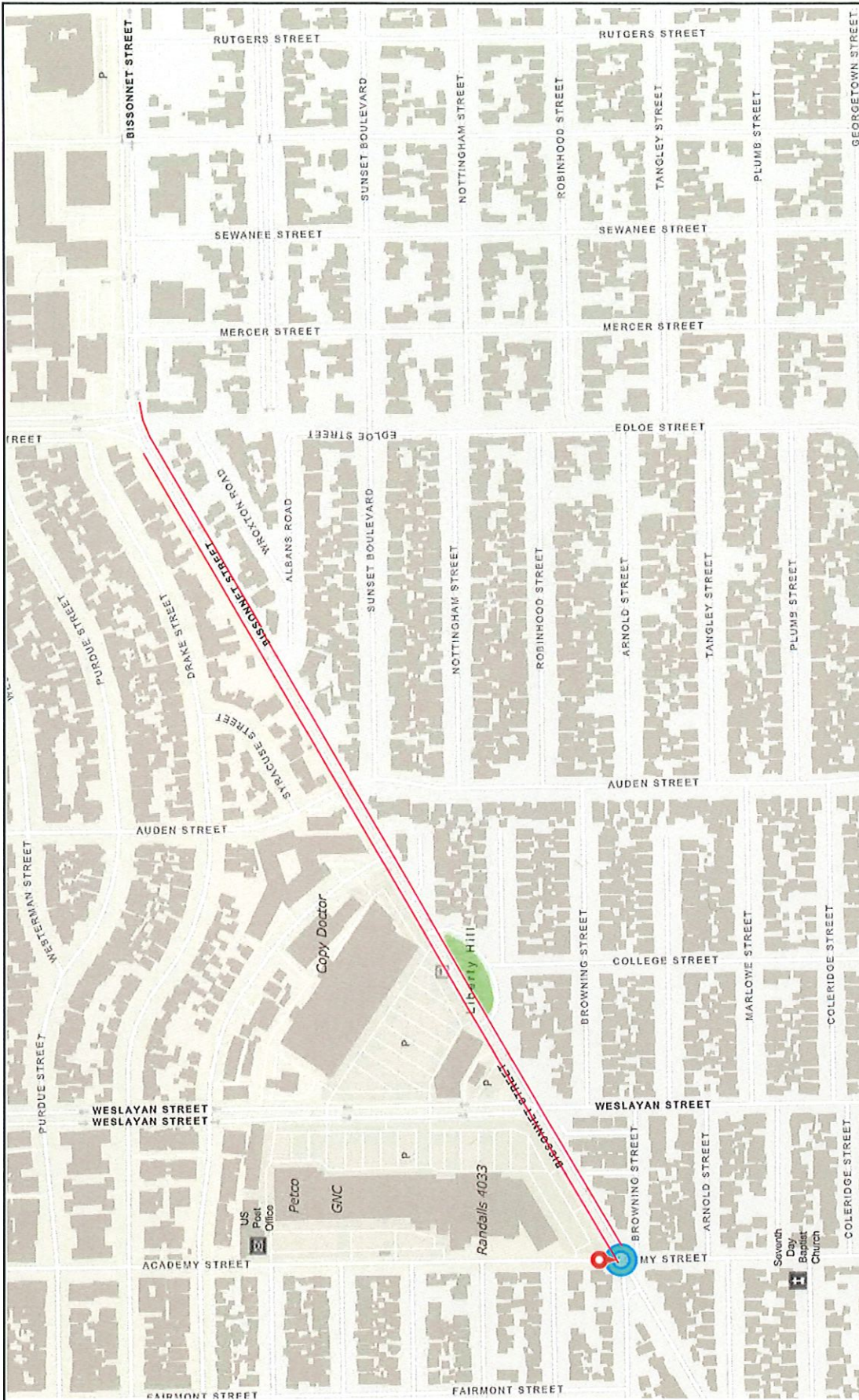
CITY OF HOUSTON
Houston Public Works
WBS N-321040-0065-4
Work Authorization #4
Council District H

The following data sets were generated by and for the Houston Public Works Department. The asset information within this map are continually being updated, refined and are being provided to your organization for official use only and remains the property of the Houston Public Works Department. Providing this document to you does not constitute a release under the Freedom of Information Act (5 U.S.C. [section] 552), and due to the sensitivity of the information, this document must be appropriately safeguarded. PLEASE NOTE that these data sets are NOT intended to be used as an authoritative public record for any geographic location or as a legal document or as a legal document or as a legal document of these datasets themselves. The Department makes no representation, guarantee or warranty as to the accuracy, completeness, currency, or suitability of these datasets, which are provided "AS IS".

5/28/2024 9:51:32 AM

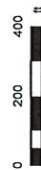


Bissonnet St. from Academy St. to Edloe St.



Legend

CITY OF HOUSTON
Houston Public Works
WBS N-321040-0065-4
Work Authorization #5
Council District C



The following data sets were generated by and for the Houston Public Works Department. The asset information within this map are continually being updated, refined and are being provided to your organization for official use only and remain the property of the Houston Public Works Department. Providing this document to you does not constitute a release under the Freedom of Information Act (5 U.S.C. [section] 552), and due to the sensitivity of the information, this document must be appropriately safeguarded. PLEASE NOTE that these data sets are NOT intended to be used as an authoritative public record for any geographic location or as a legal document or as a legal document of these datasets themselves. The Department makes no representation, guarantee or warranty as to the accuracy, completeness, currency, or suitability of these datasets, which are provided "AS IS".



