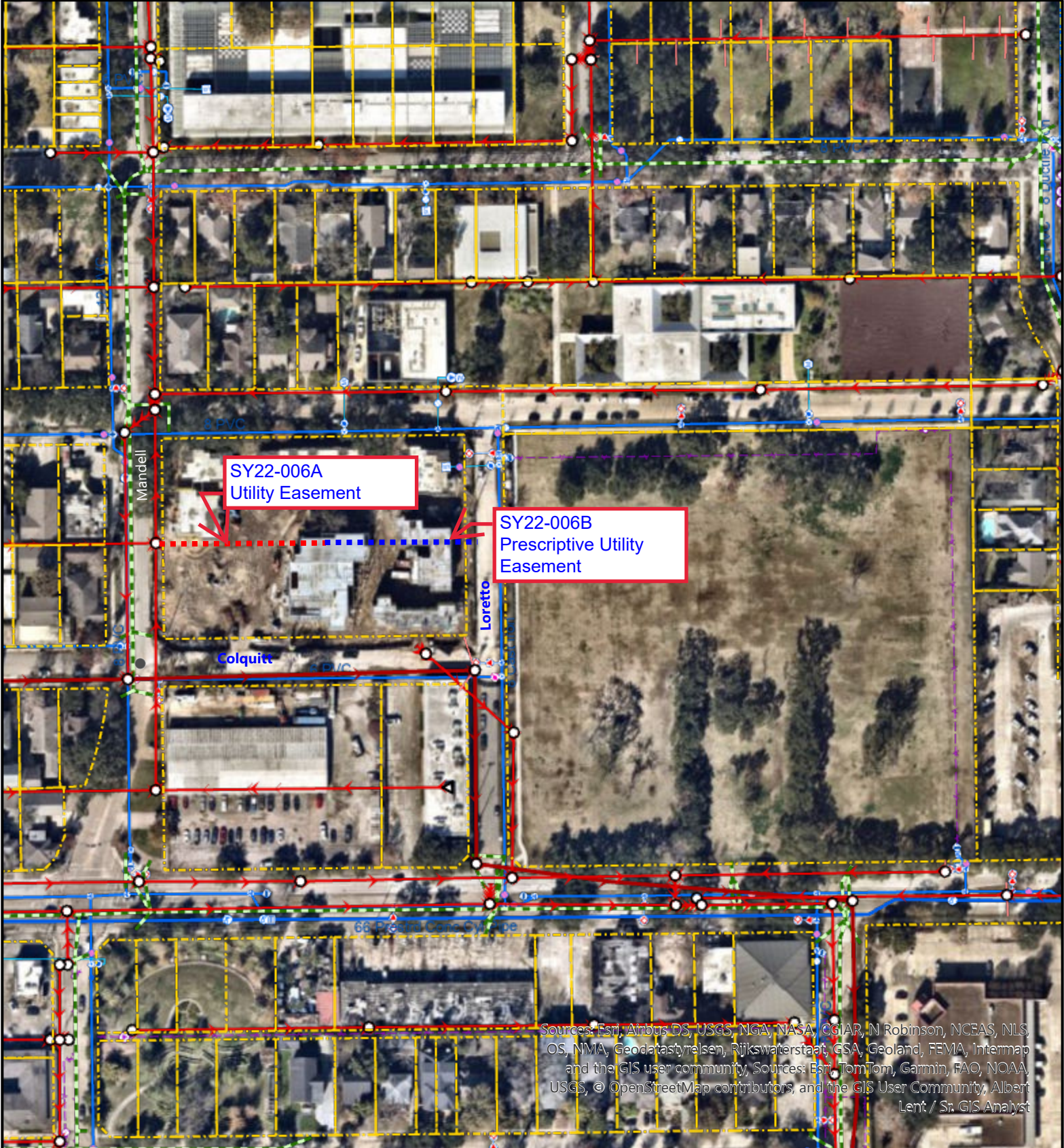


LOCATION MAP

Description: Abandonment and sale of a 6 foot-wide utility easement and a 6 foot-wide prescriptive utility easement being out of and a part of unrestricted Reserve 'A', Block 1 of Hotel Saint Augustine, situated in the Obedience Smith Survey, A-696.

Subject Address: SY22-006A and SY22-006B

Prepared by: Cynthia Wells, City of Houston, 611 Walker, 19th Floor, Houston, TX



Sources: Esri, Airbus DS, USGS, NGA, NASA, CGIAR, N Robinson, NCEAS, NLS, OS, NMA, Geodatastyrelsen, Rijkswaterstaat, GSA, Geoland, FEMA, Intermap and the GIS user community, Sources: Esri, TomTom, Garmin, FAO, NOAA, USGS, © OpenStreetMap contributors, and the GIS User Community, Albert Lent / Sr. GIS Analyst



Disclaimer Statement: Geospatial or map data maintained by the Houston Public Works are for informational purposes and may not have been prepared for or be suitable for legal, engineering, or surveying purposes. It does not represent an on-the-ground survey and only represents the approximate location of property boundaries.