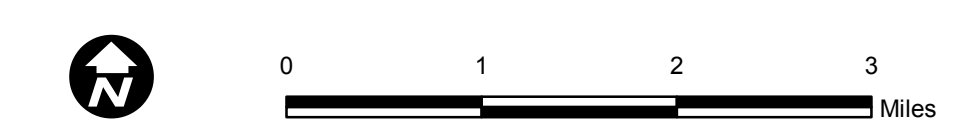


City of Houston Police Residency Incentives

- Zipcode
- Police District
- 3
- 6
- 7
- 8
- 9
- 13
- 14
- 16
- 17
- 19



Source: GIS Services Division
Date: September 23, 2015
Reference: pj18398

This map is made available for reference purposes only and should not be substituted for a survey product. The City of Houston will not accept liability of any kind in conjunction with its use.

****DRAFT****

