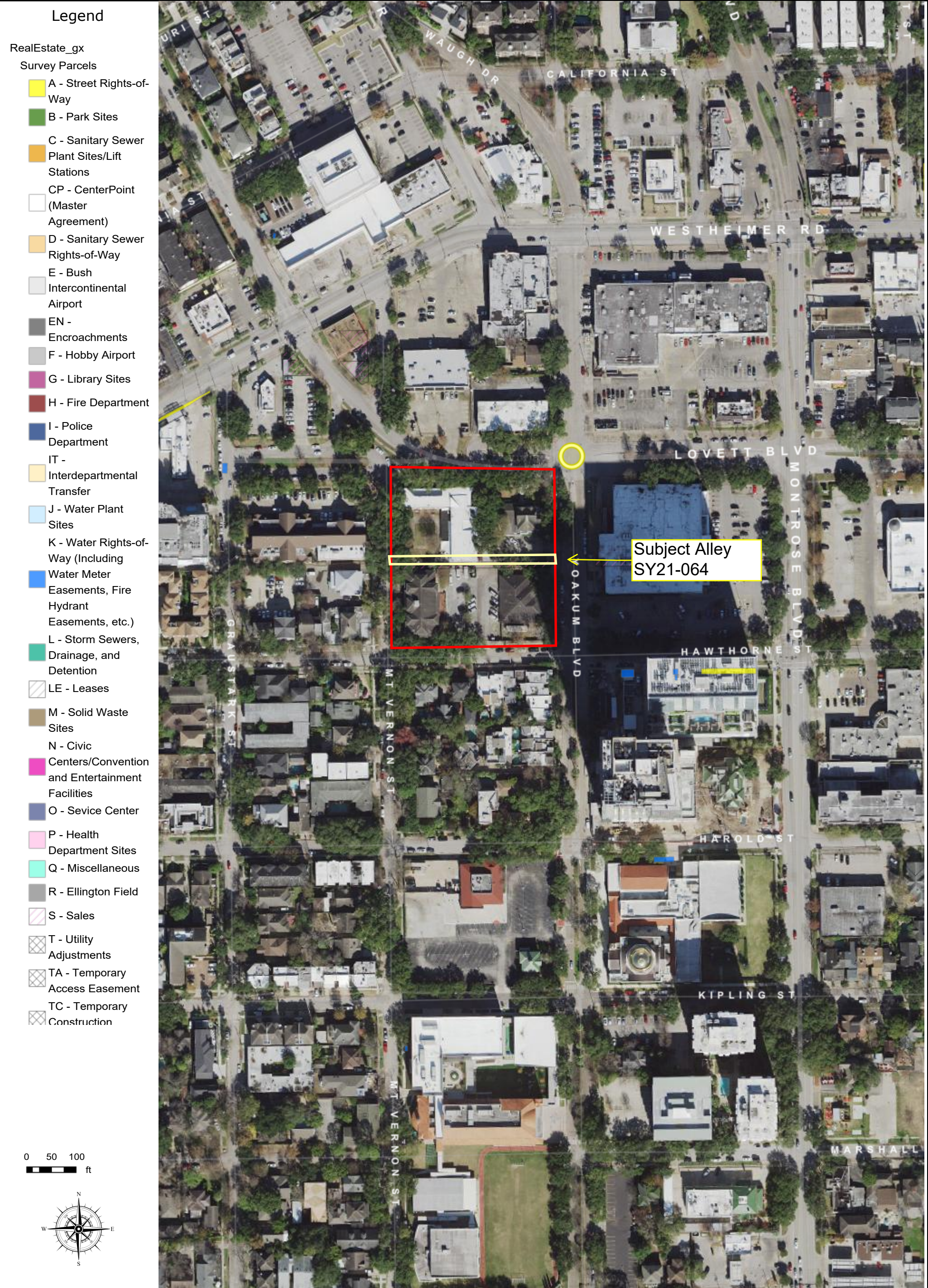


**Parcel SY21-064 - Aerial Map**

**Abandonment and sale of a 12 foot-wide alley, from Mount Vernon Avenue east to Yoakum Boulevard, located out of Block 49 of the Amending Map of Montrose Addition, out of the Obediance Smith Survey, Abstract 696**



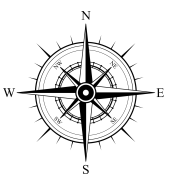
**Legend**

RealEstate\_gx

Survey Parcels

- A - Street Rights-of-Way
- B - Park Sites
- C - Sanitary Sewer Plant Sites/Lift Stations
- CP - CenterPoint (Master Agreement)
- D - Sanitary Sewer Rights-of-Way
- E - Bush Intercontinental Airport
- EN - Encroachments
- F - Hobby Airport
- G - Library Sites
- H - Fire Department
- I - Police Department
- IT - Interdepartmental Transfer
- J - Water Plant Sites
- K - Water Rights-of-Way (Including Water Meter Easements, Fire Hydrant Easements, etc.)
- L - Storm Sewers, Drainage, and Detention
- LE - Leases
- M - Solid Waste Sites
- N - Civic Centers/Convention and Entertainment Facilities
- O - Sevice Center
- P - Health Department Sites
- Q - Miscellaneous
- R - Ellington Field
- S - Sales
- T - Utility Adjustments
- TA - Temporary Access Easement
- TC - Temporary Construction

0 50 100  
ft



The following data sets were generated by and for the Houston Public Works Department. The asset information within this map are continually being updated, refined and are being provided to your organization for official use only and remains the property of the Houston Public Works Department. Providing this document to you does not constitute a release under the Freedom of Information Act (5 U.S.C. [section] 552), and due to the sensitivity of the information, this document must be appropriately safeguarded. PLEASE NOTE that these data sets are NOT intended to be used as an authoritative public record for any geographic location or as a legal document and have no legal force or effect. Users are responsible for checking the accuracy, completeness, currency and/or suitability of these datasets themselves. The Department makes no representation, guarantee or warranty as to the accuracy, completeness, currency, or suitability of these datasets, which are provided "AS IS"