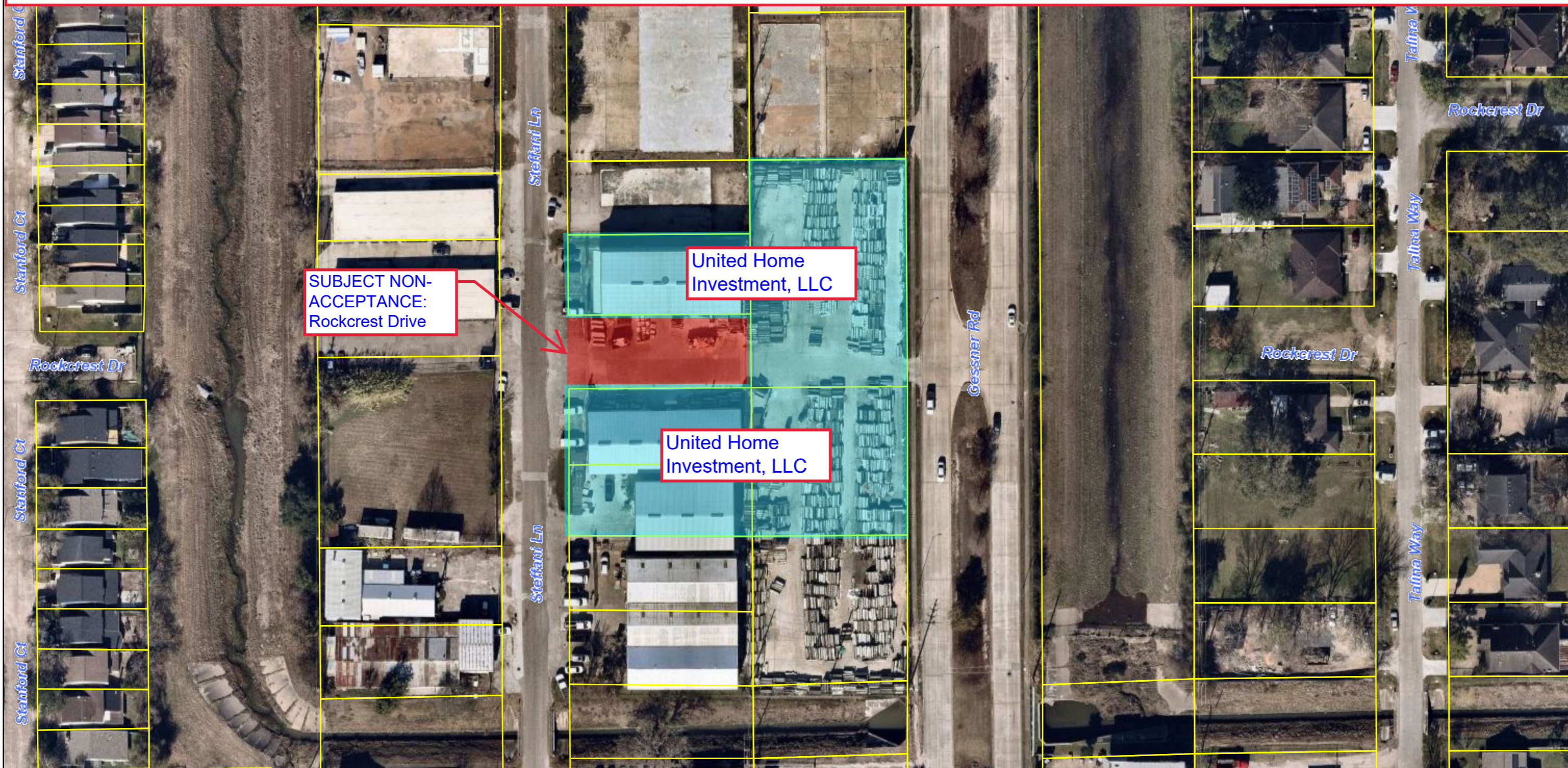


# Aerial Map

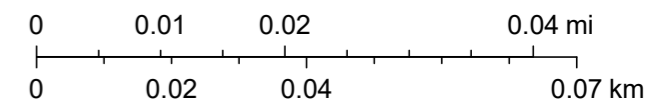
Non-acceptance of a ±8,940 square-foot portion of 60 foot-wide Rockcrest Drive, from Steffani Street east to its terminus, within the Spring Branch Terrace Subdivision, out of the J.B. Gardner Survey, A-294. **Parcel SY22-109**



5/23/2022, 11:34:47 AM

1:1,128

HCAD  
Street Names  
Nearmap US Vertical Imagery  
Red: Band\_1  
Green: Band\_2  
Blue: Band\_3



Copyright nearmap 2015, Sources: Esri, HERE, Garmin, FAO, NOAA, USGS, © OpenStreetMap contributors, and the GIS User Community