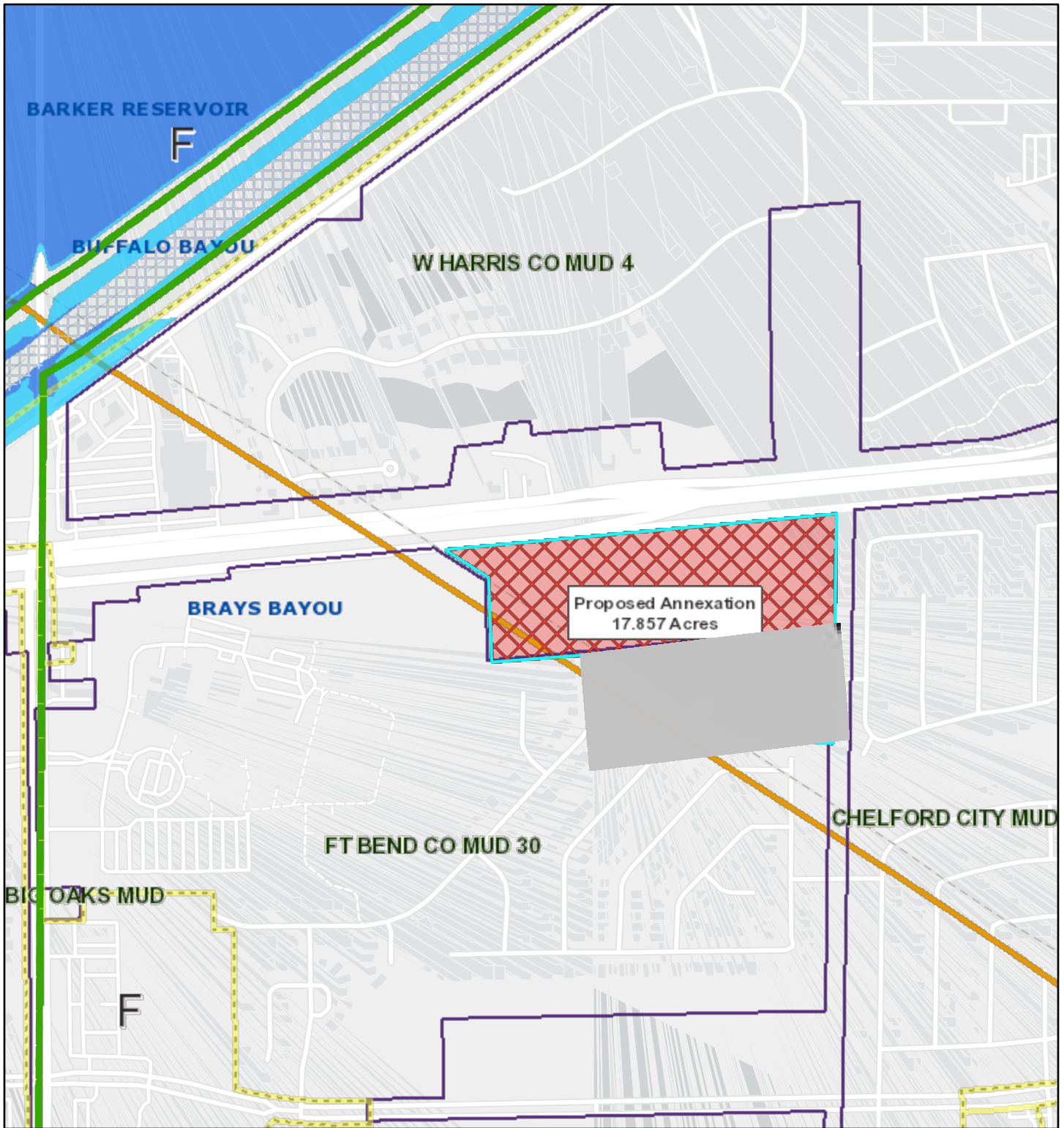


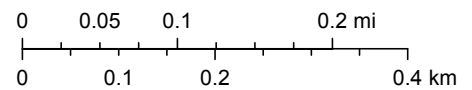
# Chelford City Municipal Utility District (17.857 acres)



7/11/2023, 12:26:34 PM

1:9,028

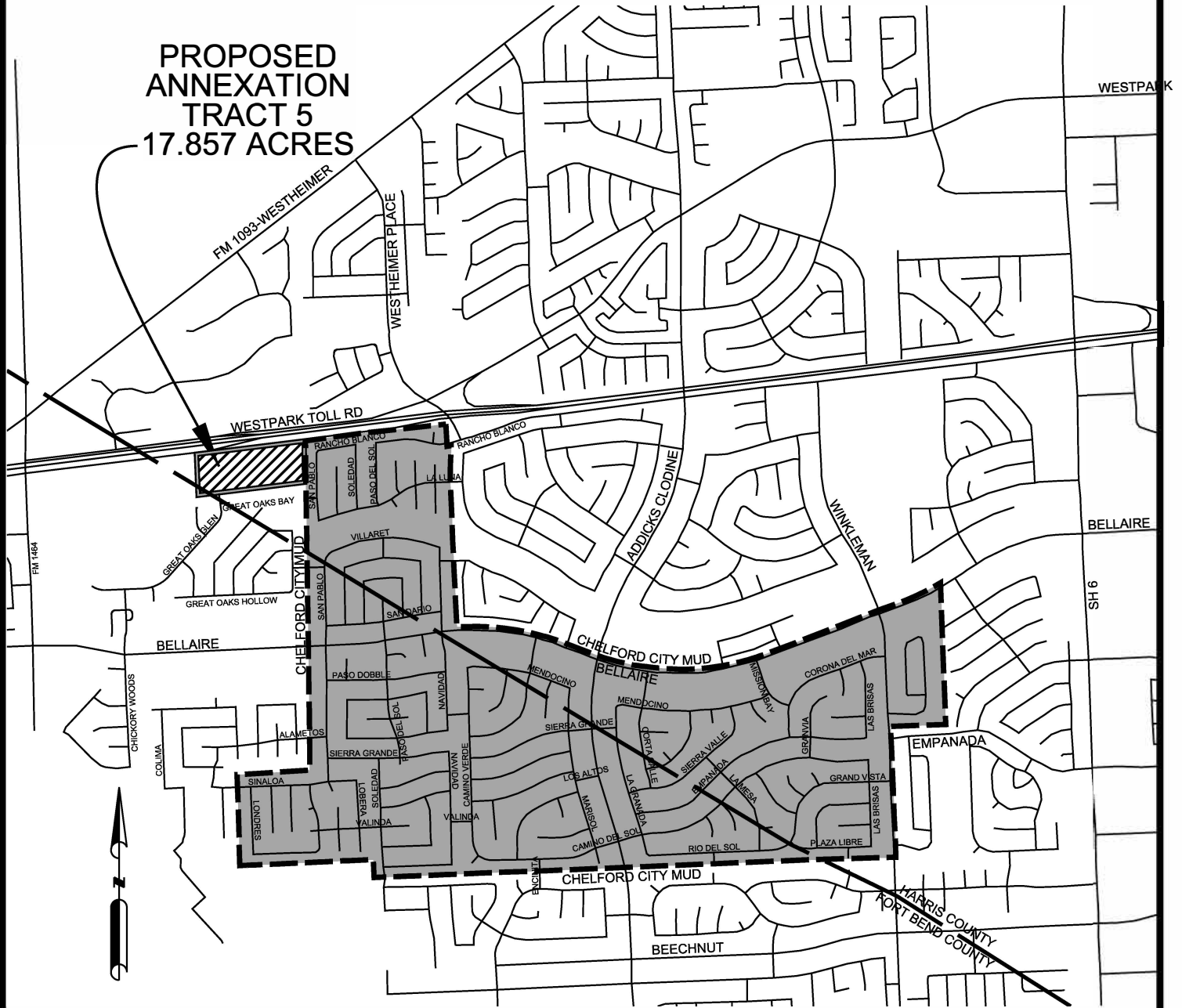
- █ Watersheds
- █ Texas Senate Districts
- █ Texas House Districts
- █ Flood Hazard Zones
- █ 100 Year Floodplain
- █ 500 Year Floodplain
- Floodway
- City Limits
- Council Districts
- Existing Acreage of District



# CHELFORD CITY M.U.D.

CURRENT ACREAGE 704.9223 AC.

PROPOSED  
ANNEXATION  
TRACT 5  
17.857 ACRES



## VICINITY MAP

N.T.S.



VOGLER & SPENCER  
ENGINEERING

777 North Eldridge Parkway, Suite 500  
Houston, Texas 77079  
713-782-0042  
www.vs-eng.com  
Texas P. E. Firm Registration No. F148

DRAWN BY: DGR  
JOB No: 17000-617-1-RPT DATE: AUGUST, 2023