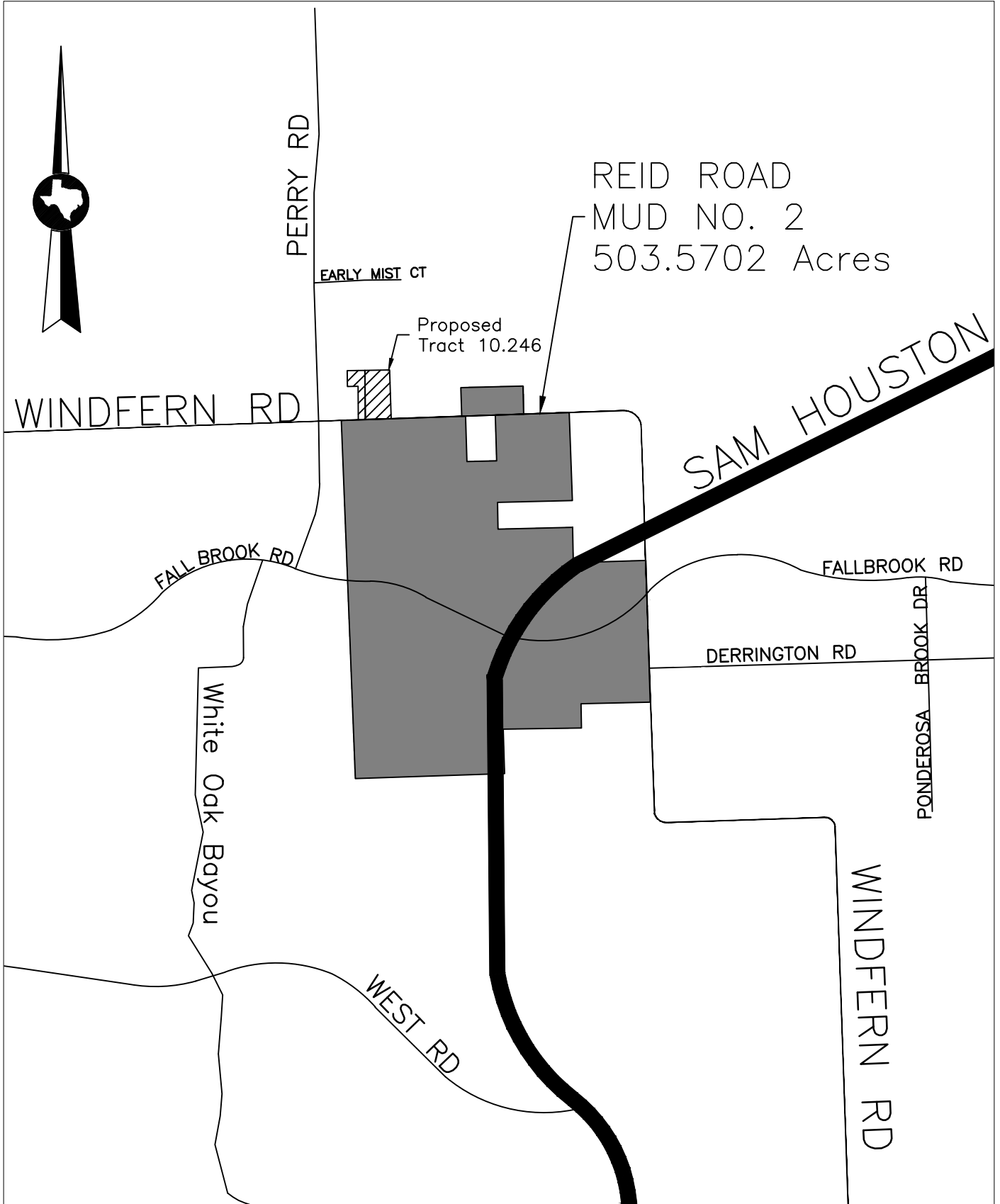


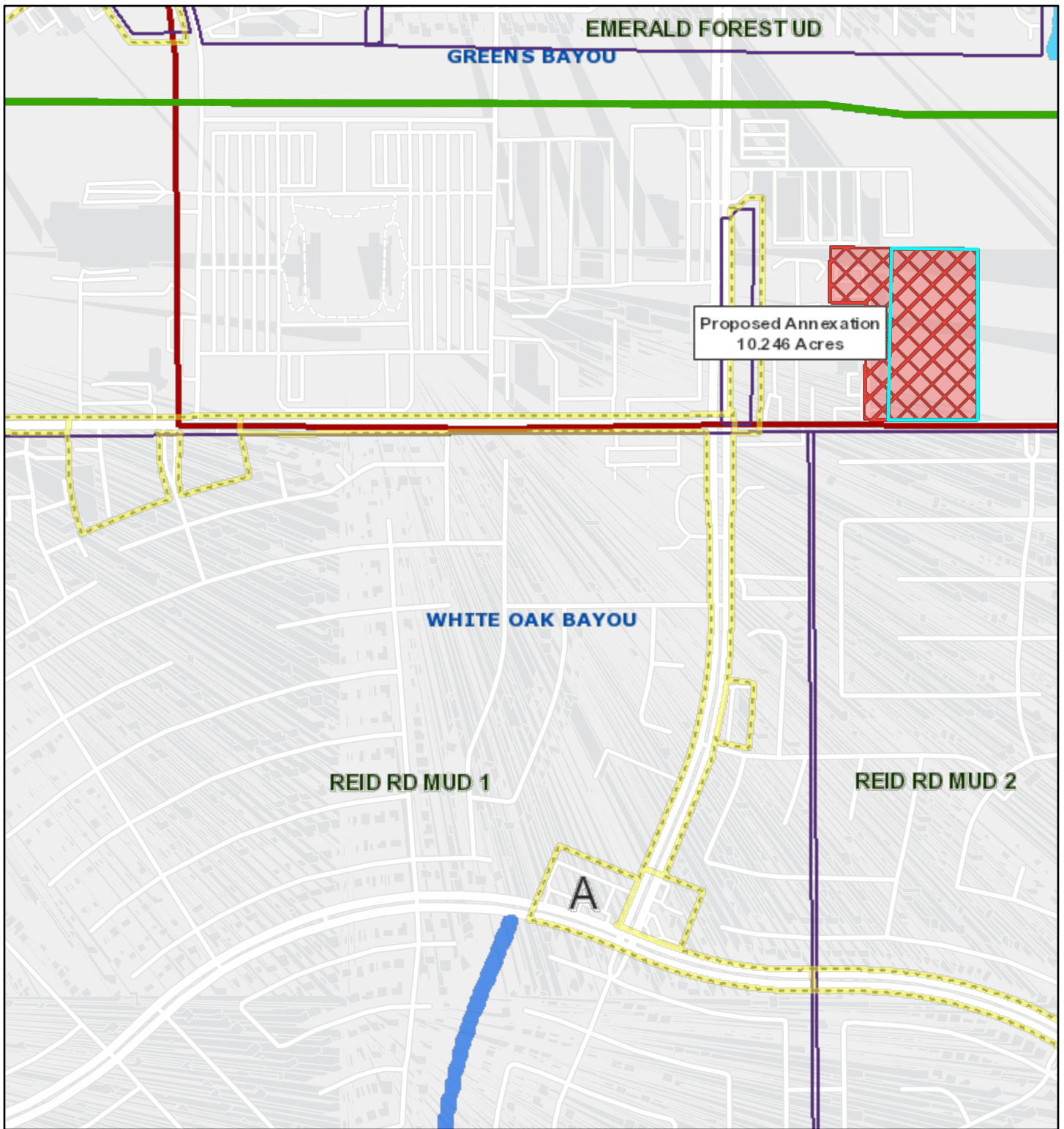
REID ROAD MUD NO. 2

(Acres to be annexed: 10.246 , Key Map: 369V)



VICINITY MAP  
N.T.S.

# Reid Road Municipal Utility District No.2 (10.246 acres)



8/9/2023, 12:35:59 PM

1:9,028

- █ Watersheds
- Texas Senate Districts
- Texas House Districts
- █ Flood Hazard Zones
- █ 100 Year Floodplain
- 500 Year Floodplain
- Floodway
- City Limits
- Council Districts
- Existing Acreage of District

