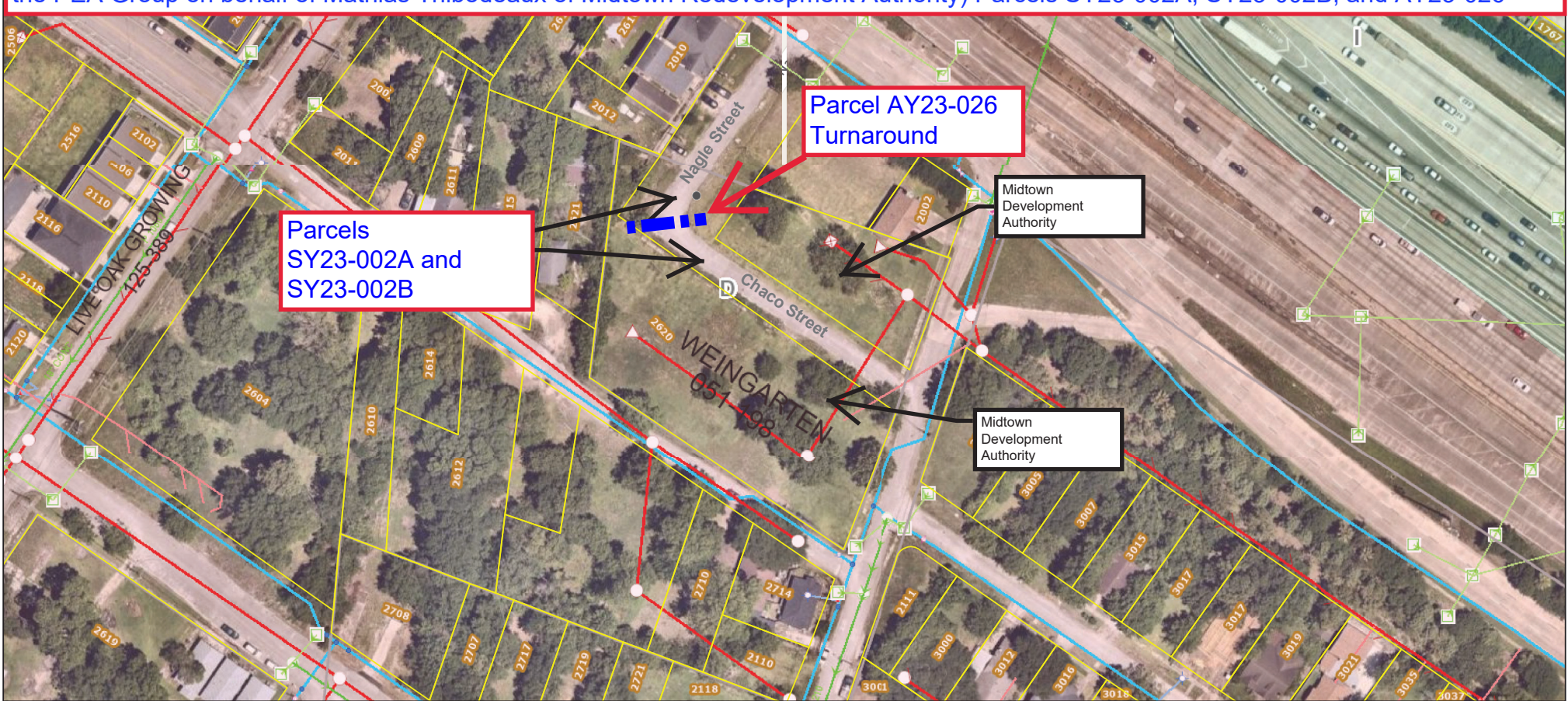


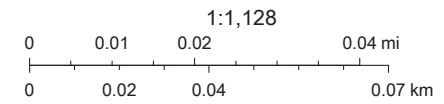
Aerial Map

Abandonment and sale of Chaco Street, from Sauer Street west to Nagle Street, and Nagle Street, from the north property line of Lot 12 north ± 82 feet to the north property line of Lot 1, in exchange for conveyance of a right-of-way easement for and construction of a turnaround located at the terminus of Nagle Street, all out of the Weingarten Subdivision, James Wells Survey, A-832. (Glen Freeland of the PEA Group on behalf of Mathias Thibodeaux of Midtown Redevelopment Authority) Parcels SY23-002A, SY23-002B, and AY23-026



7/8/2022, 9:54:17 AM

HCAD	E Subdivisions	Plug	Cleanout	Stormceptor	TrenchDrain	Private Service Connection - Stub	Manhole
Survey Parcel	F Parcel Address Labels	Reducer	Storm Inlet	Casement	Trunk	Private Service Connection - Collector	Manhole
Keymap Grid	G Pump Station	Safety End Treatment	Storm Inlet A	Gravity Main	Gravity Main	Force Main	Junction Box
Council District	H Fitting	Stack	Storm Inlet L	Culvert	Trunk	Force	Diversion Box
A	I Drain Node	Storm Gate Valve	Manhole	Lead	Collector	Sludge	Clean Out
B	J Flap Gate	Storm Interconnect	Junction Box	Outfall	Overflow	Service Line	Cleanout
C	K Headwall with Structure	Unusual Fitting	Manhole	Overflow	Siphon	Casing	Pig Launching Station
D	Headwall without Structure		Outfall	Siphon	Stub		Permanent Flow Meter



Esri Community Maps Contributors, City of Houston, HPB, Texas Parks & Wildlife, © OpenStreetMap, Microsoft, CONANP, Esri, HERE, Garmin, Foursquare, SafeGraph, GeoTechnologies, Inc, METI/NASA, USGS,