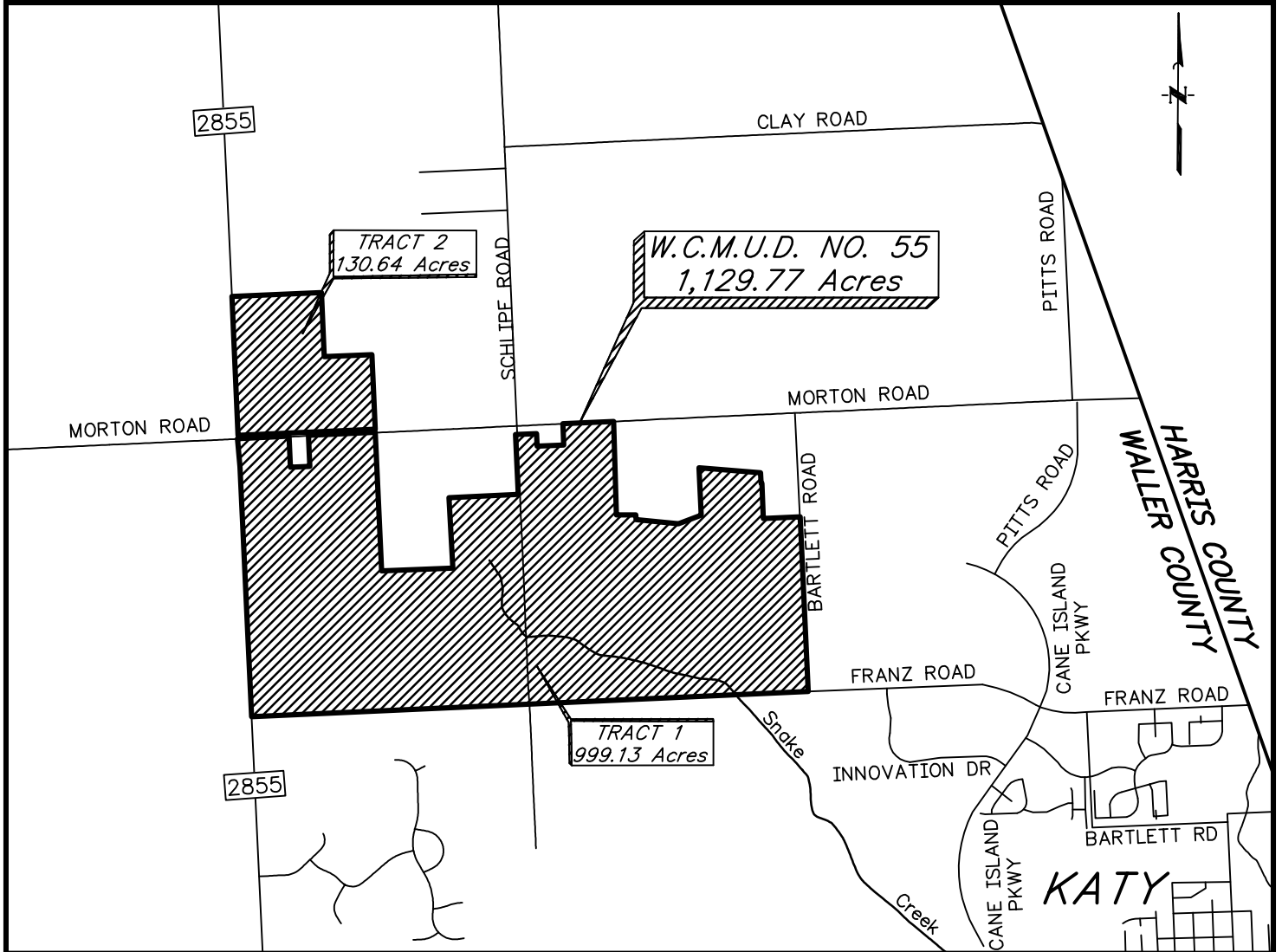


WALLER COUNTY MUNICIPAL UTILITY DISTRICT NO. 55

Total AC: 1,129.77

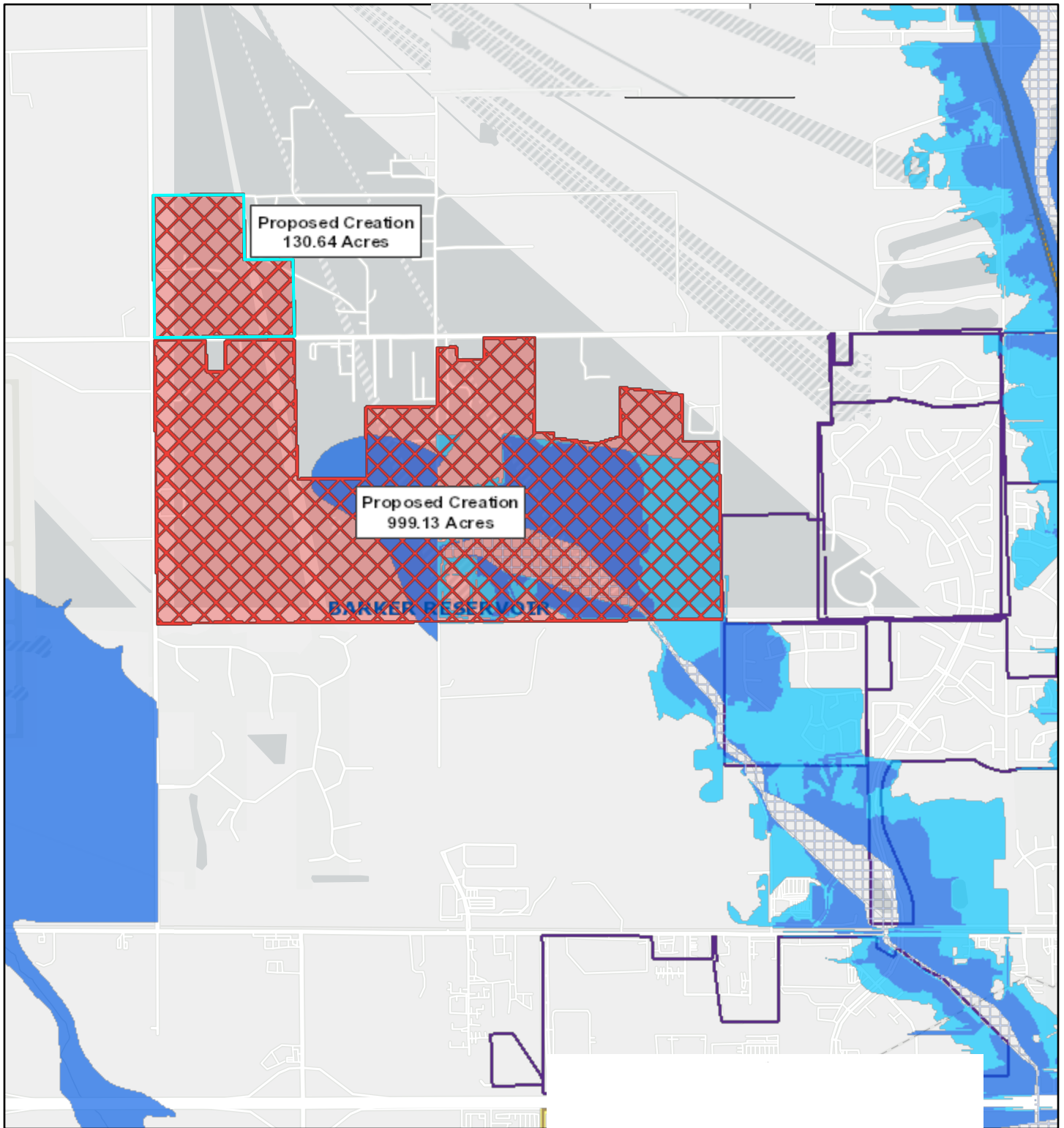
Key Map: Waller County 443 J, K, N, P, Q, & R



VICINITY MAP











Scale: N.T.S.

Waller County Municipal Utility District No. 55 (1,129.77 acres)



4/21/2023, 10:49:31 AM

1:36,112

-  Watersheds
-  Texas Senate Districts
-  Texas House Districts
-  Flood Hazard Zones
-  100 Year Floodplain
-  500 Yyear Floodplain
-  Floodway
-  City Limits
-  Council Districts
-  Existing Acreage of District

