



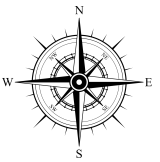
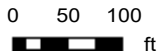
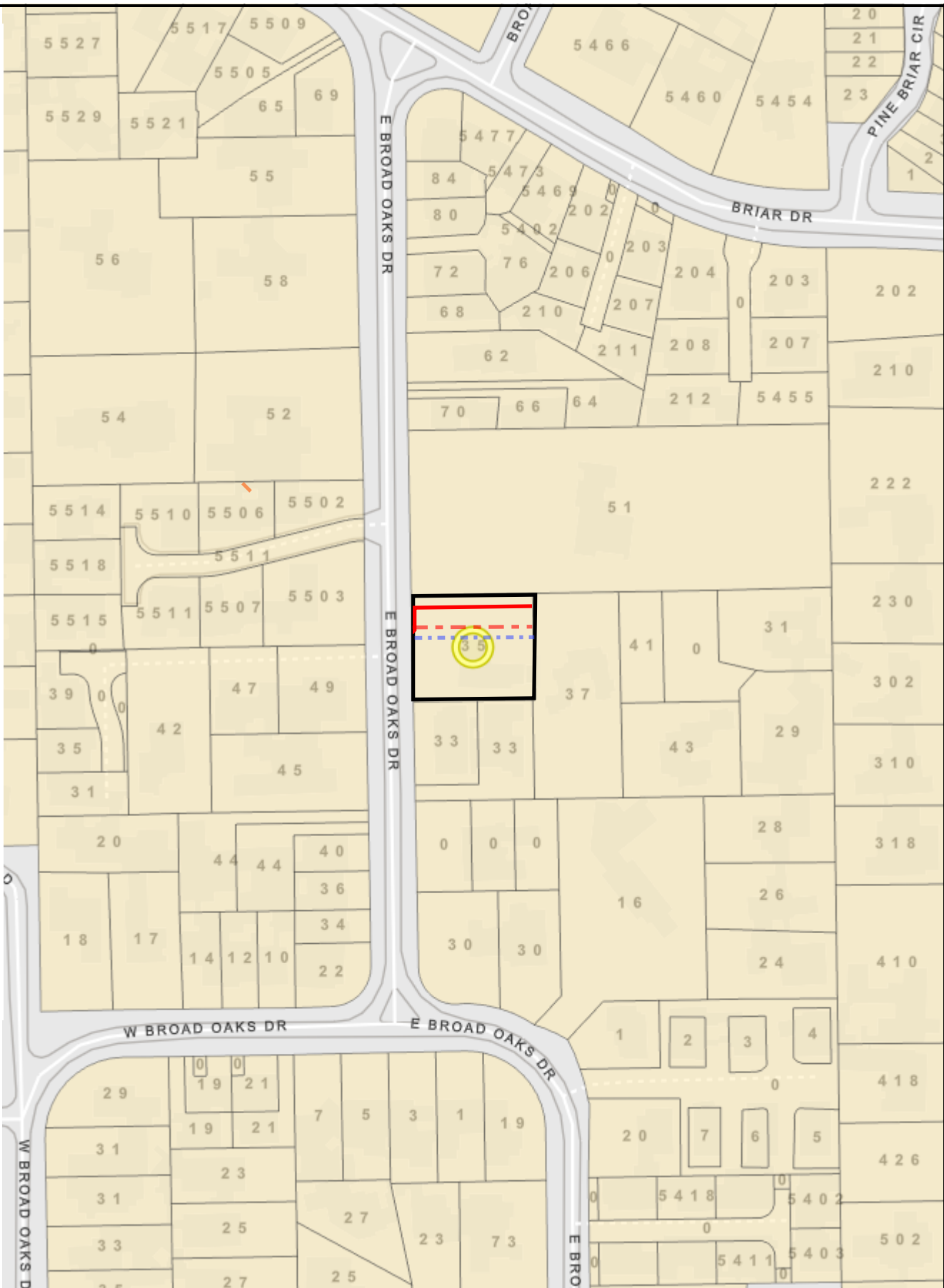


Parcel Map

Abandonment and sale of a 6 foot-wide water line easement and an 8 foot-wide sanitary sewer easement, in exchange for conveyance to the City of a 15 foot-wide sanitary sewer easement, all within Tract 8J, Block 3, out of the Broad Oaks Addition, out of the Charles Sage Survey,

-  Applicant's Property
-  SY19-048A
-  SY19-048B
-  DY19-032



The following data sets were generated by and for the Houston Public Works Department. The asset information within this map are continually being updated, refined and are being provided to your organization for official use only and remains the property of the Houston Public Works Department. Providing this document to you does not constitute a release under the Freedom of Information Act (5 U.S.C. [section] 552), and due to the sensitivity of the information, this document must be appropriately safeguarded. PLEASE NOTE that these data sets are NOT intended to be used as an authoritative public record for any geographic location or as a legal document and have no legal force or effect. Users are responsible for checking the accuracy, completeness, currency and/or suitability of these datasets themselves. The Department makes no representation, guarantee or warranty as to the accuracy, completeness, currency, or suitability of these datasets, which are provided "AS IS"