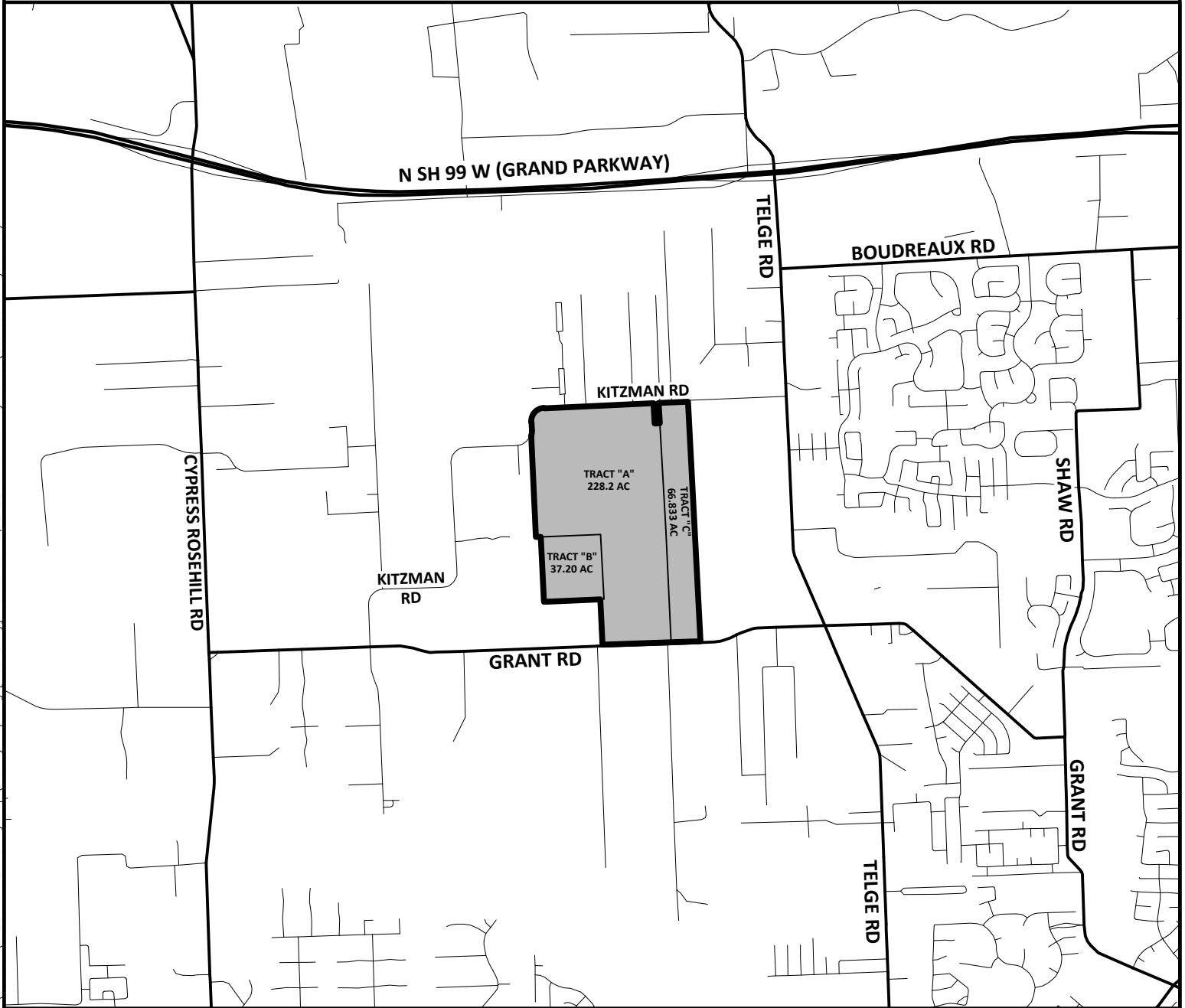


HARRIS COUNTY MUNICIPAL DISTRICT NO. 583

332.233 ACRES

W.H. FITCH SURVEY, A-963, HERMAN MATZKE SURVEY, A-1552, LOUIS MATZKE, A-1553,
J.P. CHRITEN SURVEY, A-994 AND C. THEEK SURVEY, A-1560
KEY MAP NO. 327 C, 327 G AND 327 L

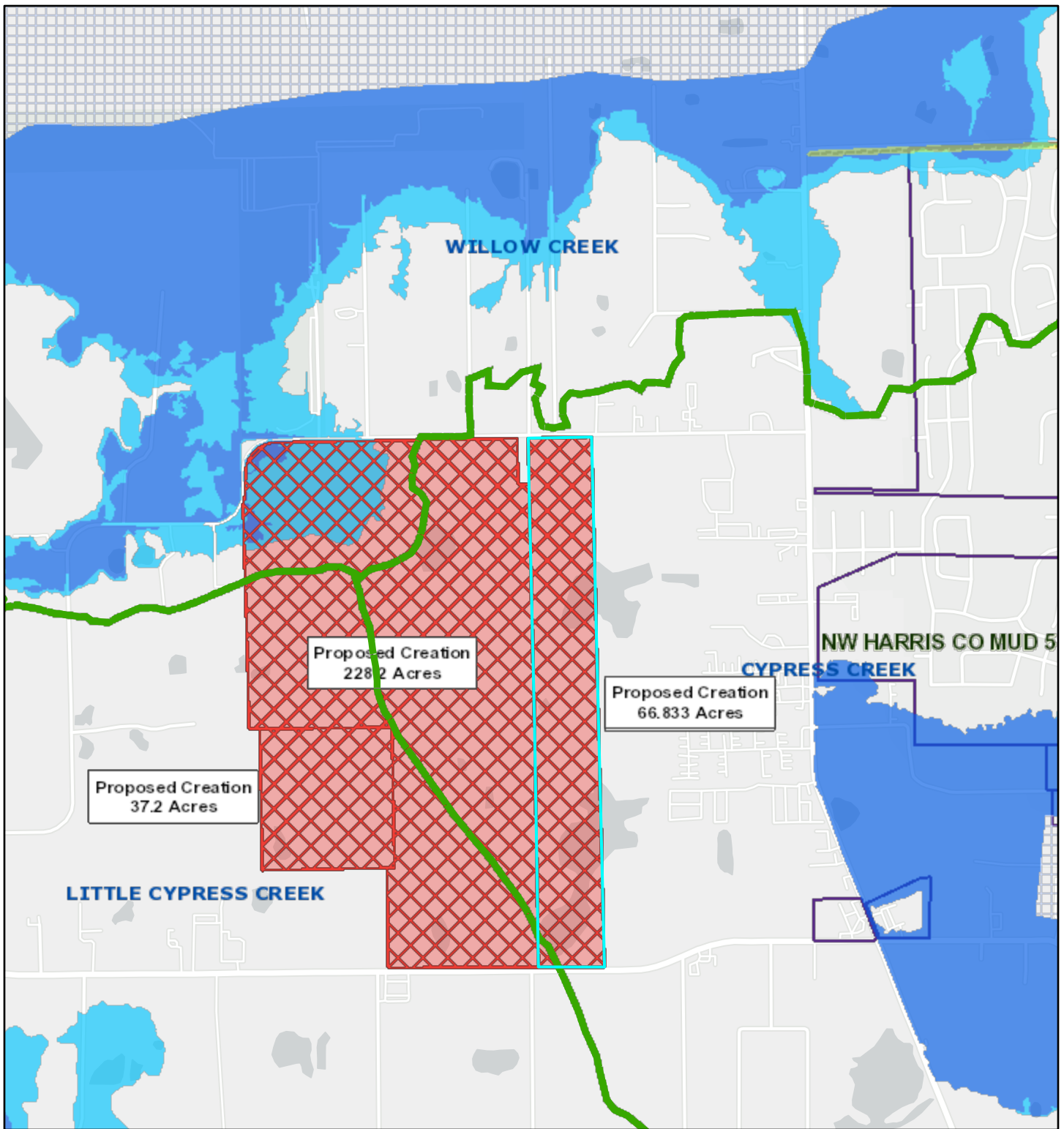


\\fs3\Projects\2300\238600200_HCMUD_583_Creation\CAD\Exhibits\2022-04-12_Vicinity_Map[Vicinity_Map.dwg [MUD_Bnd]] Plotted Jul 12, 2022 at 6:47am by teloid (Last Saved by: teloid)













VICINITY MAP
NTS

Harris County Municipal Utility District No. 583 (332.233 acres)



7/12/2022, 12:36:14 PM

1:18,056

-  Watersheds
-  Texas Senate Districts
-  Texas House Districts
-  Flood Hazard Zones
-  100 Year Floodplain
-  500 Year Floodplain
-  Floodway
-  City Limits
-  Council Districts
-  Existing Acreage of District

