

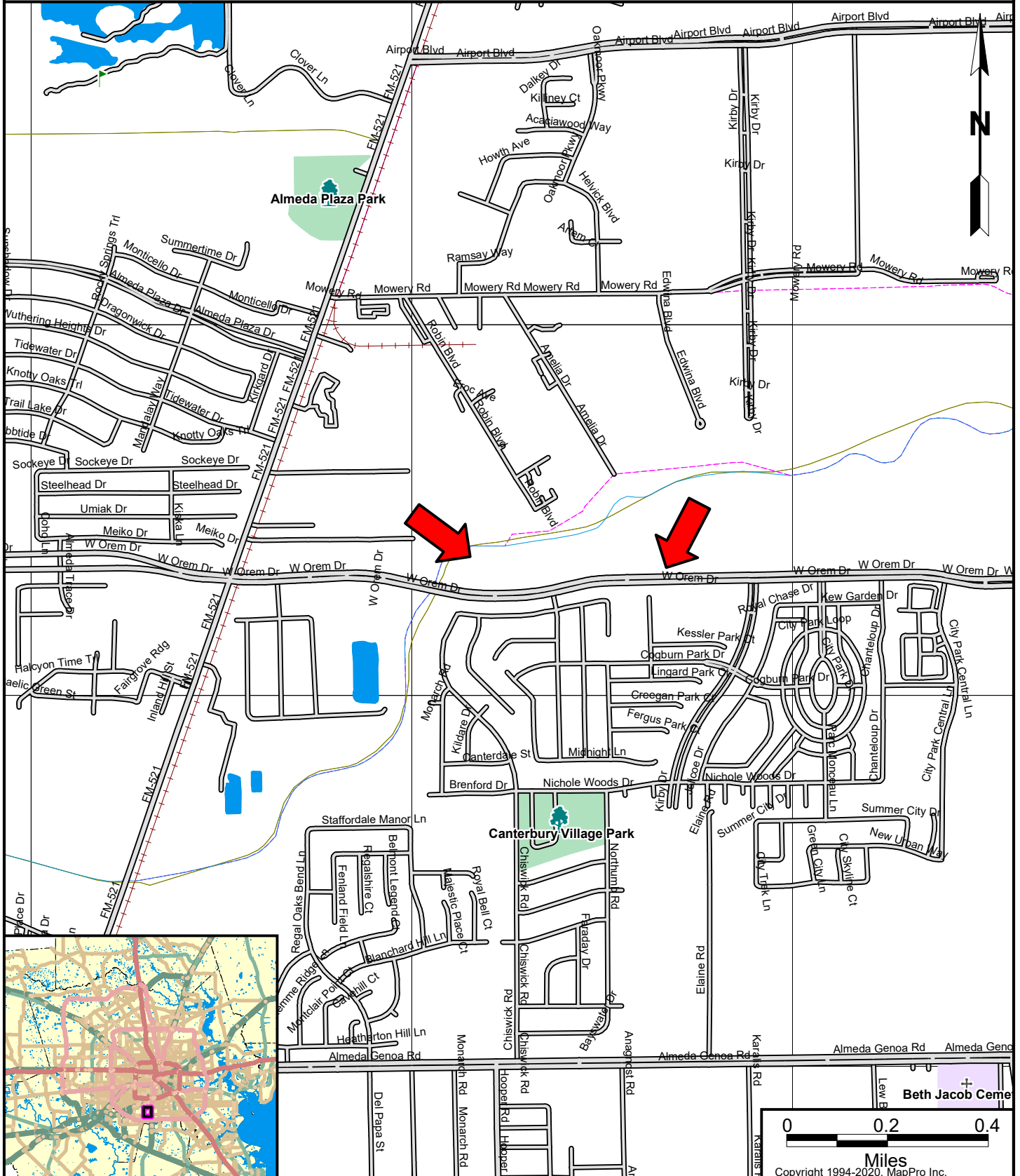
# LOCATION MAP

Description: Almeda Sims WWTP Large Diameter Influent Sewer Relocation

WBS R-002011-0090-2; Parcels AY19-184 and TCY22-006; Council District D; Key Map 572 M & R

Subject Address: 2201 W. Orem Dr., Houston, TX 77047

Prepared by: City of Houston, 611 Walker, 19th Floor, Houston, TX 77002



**CAUTION:**

The location of property arrows shown on this map are approximate only. Inaccuracies may exist on map such as missing, incorrectly drawn, or incorrectly addressed streets. Please report any such inaccuracy to MapPro, Inc. so that appropriate corrections can be made.