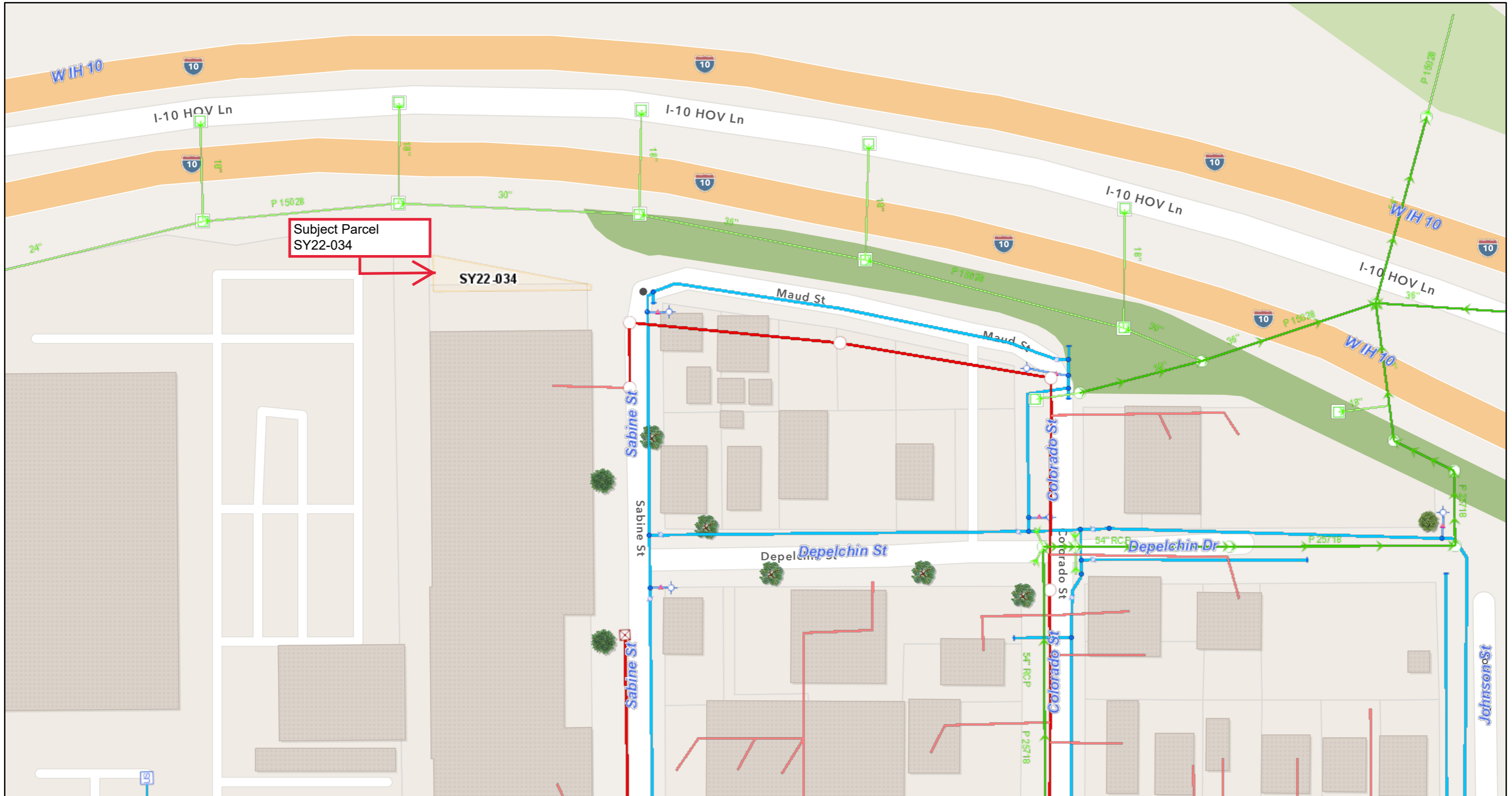


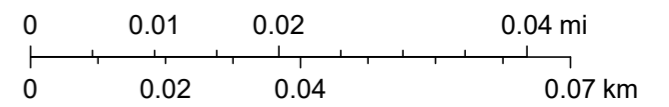
# SY22-034 Maud and Sabine



6/14/2022, 3:21:42 PM

1:1,128

- |                            |                      |               |              |              |  |                       |               |                |
|----------------------------|----------------------|---------------|--------------|--------------|--|-----------------------|---------------|----------------|
| Survey Parcel              | Plug                 | Cleanout      | Stormceptor  | TrenchDrain  | Private Service Connection - Stub      | Manhole               | Fitting       | Tee            |
| Street Names               | Reducer              | Storm Inlet   | Casement     | Trunk        | Private Service Connection - Collector | Junction Box          | EndofLine     | UnusualFitting |
| Pump Station               | Safety End Treatment | Storm Inlet A | Gravity Main | Gravity Main | Force Main                             | Diversion Box         | Interconnect  | Wye1           |
| Fitting                    | Stack                | Storm Inlet L | Culvert      | Trunk        | Force                                  | Cleanout              | Sanitary Node | Wye2           |
| Drain Node                 | Storm Gate Valve     | Manhole       | Lead         | Collector    | Sludge                                 | Pig Launching Station | Plug          |                |
| Flap Gate                  | Storm Interconnect   | Junction Box  | Outfall      | Overflow     | Service Line                           | Permanent Flow Meter  | Reducer       |                |
| Headwall with Structure    | Unusual Fitting      | Manhole       | Overflow     | Siphon       | Casing                                 |                       | Stack         |                |
| Headwall without Structure |                      | Outfall       | Siphon       | Stub         |  |                       | StarTap       |                |



Kirt Arthur | Houston Water | Houston Water, Mary Gambordella | GIS Analyst | Houston Public Works | Water Division, Kirt Arthur | GIS Supervisor | Houston Public Works | Houston Water GIS, Sources: Esri, HERE, Garmin, FAO, NOAA, USGS, © OpenStreetMap contributors, and the GIS User Community