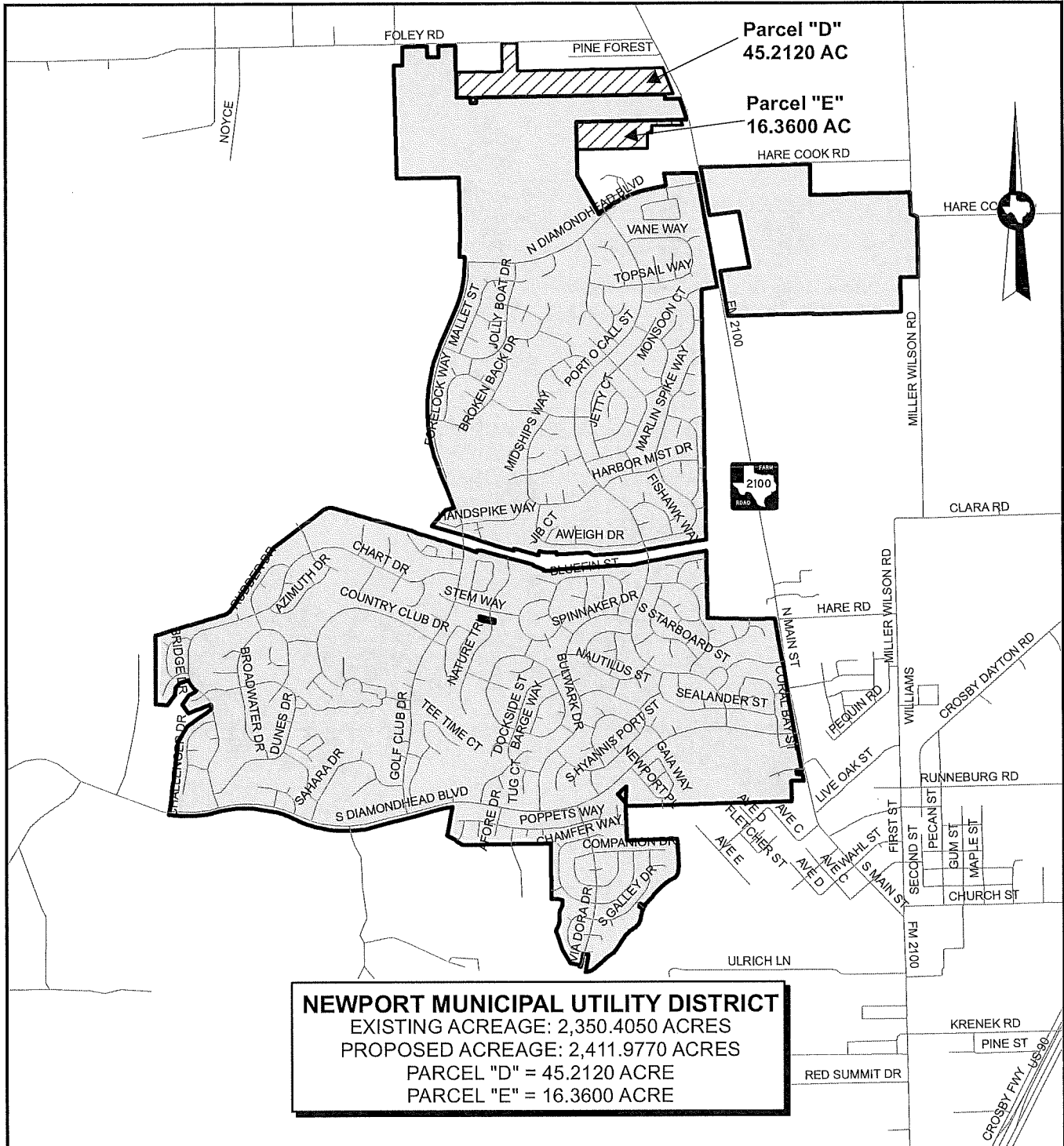


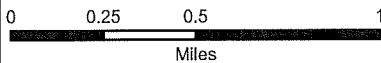
NEWPORT MUNICIPAL UTILITY DISTRICT

PARCEL "D" - 45.2120 ACRE KEY MAP LOCATION 379T
 LOCATED IN THE ABSOLOM REEVES SURVEY, ABSTRACT NO. 60, HARRIS COUNTY, TEXAS
 PARCEL "E" - 16.3600 ACRE - KEY MAP LOCATION 379T
 LOCATED IN THE WILLIAM WILSON SURVEY, ABSTRACT NO. 838, HARRIS COUNTY, TEXAS



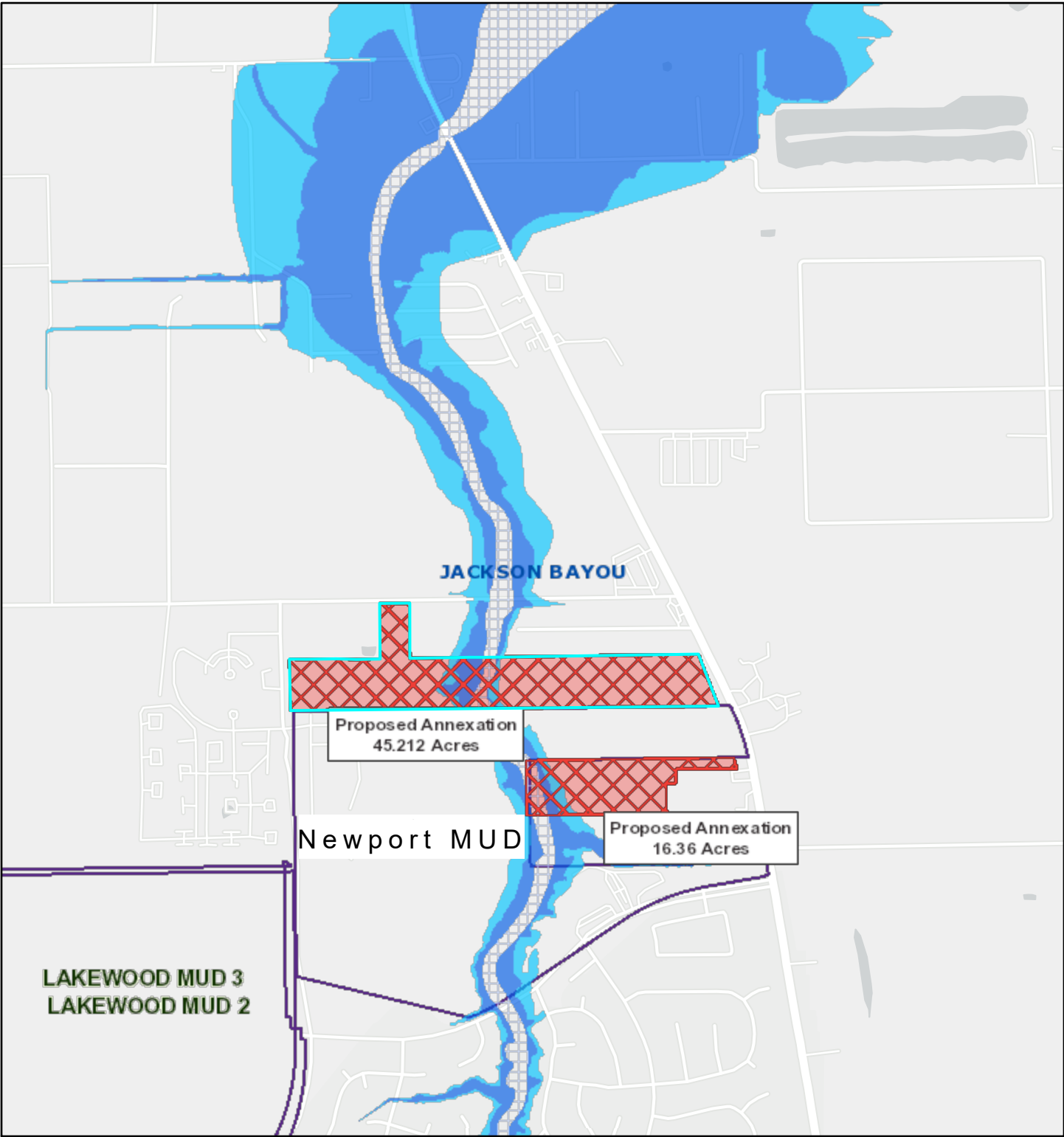
NEWPORT MUNICIPAL UTILITY DISTRICT
 EXISTING ACREAGE: 2,350.4050 ACRES
 PROPOSED ACREAGE: 2,411.9770 ACRES
 PARCEL "D" = 45.2120 ACRE
 PARCEL "E" = 16.3600 ACRE

1 inch equals 0.5 miles



VICINITY MAP

Newport Municipal Utility District (61.572 acres)



5/10/2022, 9:55:16 AM

1:18,056

- Watersheds
- Texas Senate Districts
- Texas House Districts
- Flood Hazard Zones
- 100 Year Floodplain
- 500 Yyear Floodplain
- Floodway
- City Limits
- Council Districts
- Existing Acreage of District

