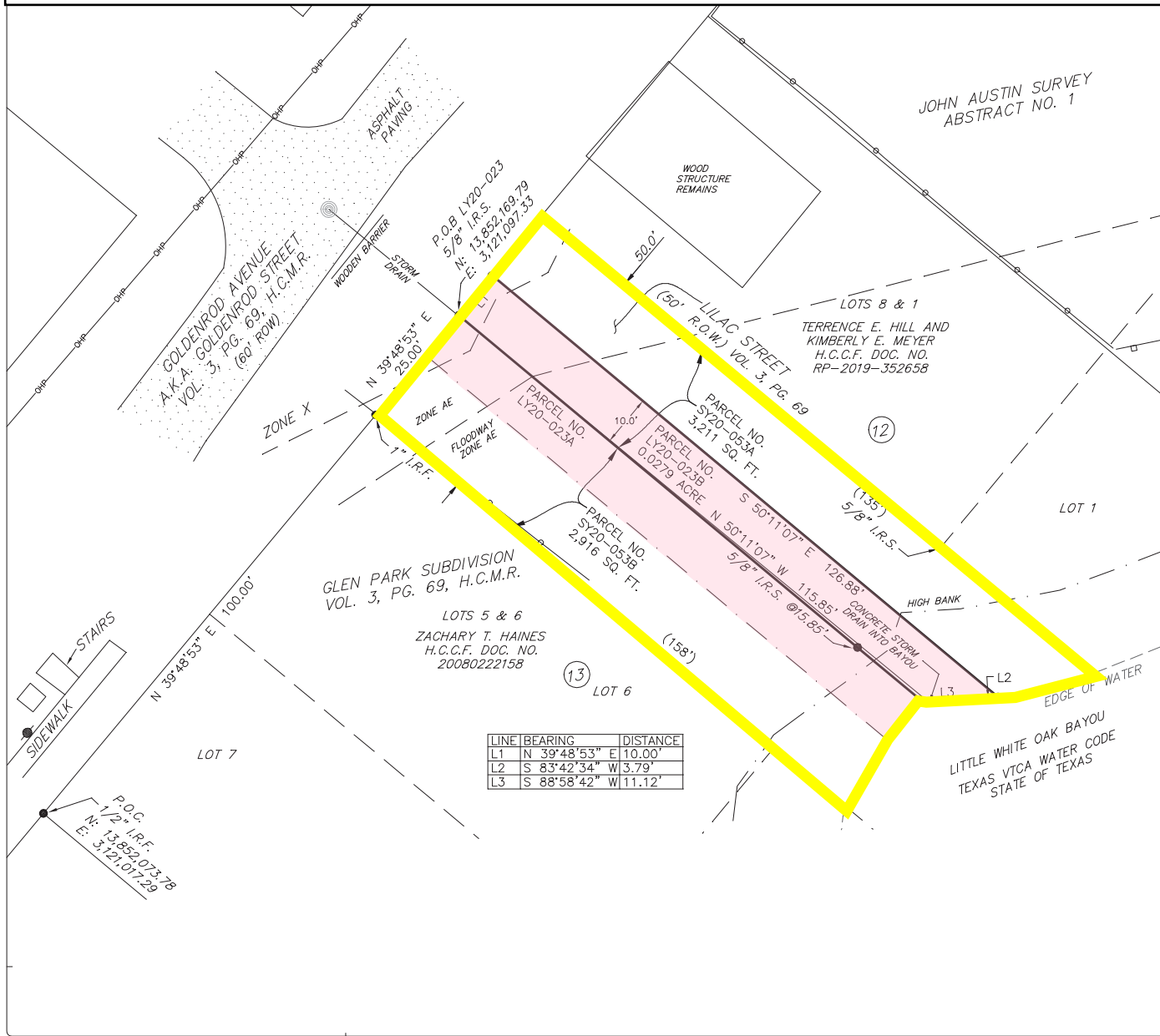


Subject: Abandonment and sale of Lilac Street, from Goldenrod Street south to its terminus, in exchange for conveyance to the City of a 20 foot-wide storm sewer easement, both located in the Glen Park Subdivision, out of the John Austin Survey. **Parcels SY20-053A, SY20-053B, LY20-023A, and LY20-023B**



LILAC STREET

STORM SEWER EASEMENT