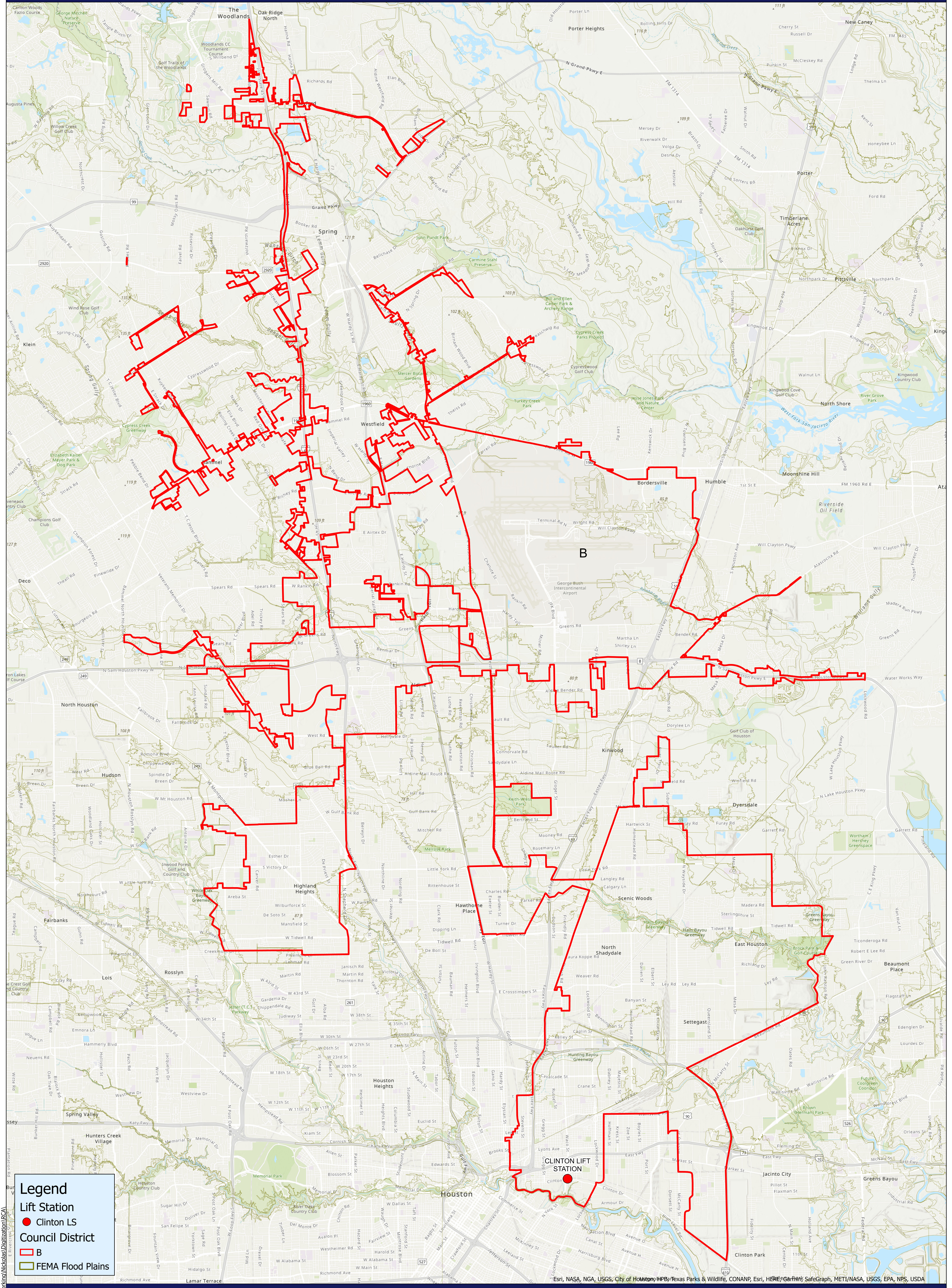


Locations for RCA HPW20FMS15 - District B



Legend

- Lift Station
- Clinton LS
- Council District
- B
- FEMA Flood Plains

Document Path: P:\GIS\HW\Users\work\micklas\Digitalization\RCA\

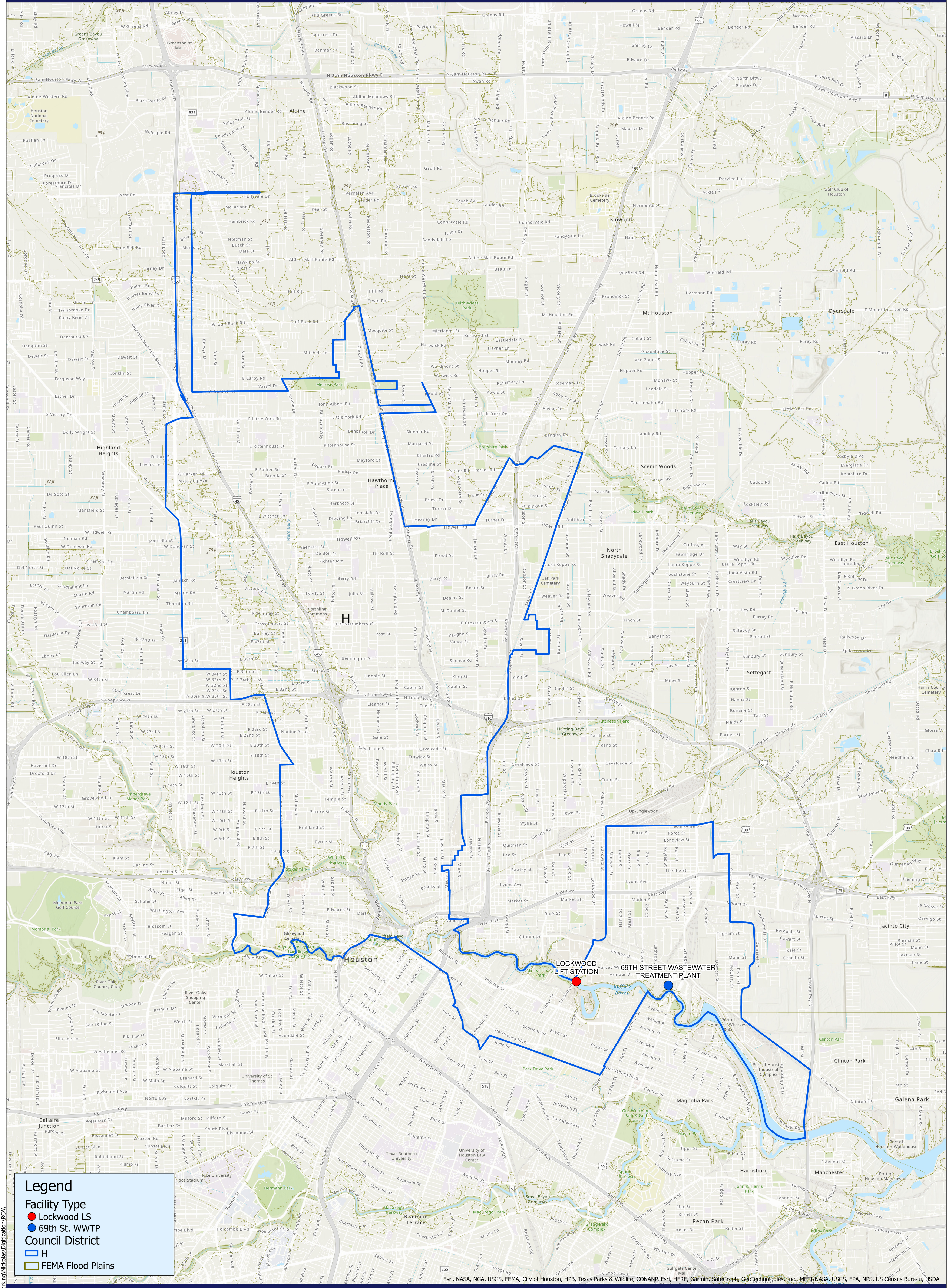


Geospatial or map data maintained by Houston Public Works is for informational purposes and may not have been prepared for or be suitable for legal, engineering, or surveying purposes. It does not represent an on-the-ground survey and only represents the approximate location of property boundaries.

Esri, NASA, NGA, USGS, City of Houston, HPB, Texas Parks & Wildlife, CONANP, Esri, HERE, Garmin, SafeGraph, METI/NASA, USGS, EPA, NPS, USDA



Locations for RCA HPW20FMS15 - District H



Legend

- Facility Type
 - Lockwood LS
 - 69th St. WWTP
- Council District
 - H
- FEMA Flood Plains

Esri, NASA, NGA, USGS, FEMA, City of Houston, HPB, Texas Parks & Wildlife, CONANP, Esri, HERE, Garmin, SafeGraph, GeoTechnologies, Inc., METI/NASA, USGS, EPA, NPS, US Census Bureau, USDA

HOUSTON PUBLIC WORKS

Geospatial or map data maintained by Houston Public Works is for informational purposes and may not have been prepared for or be suitable for legal, engineering, or surveying purposes. It does not represent an on-the-ground survey and only represents the approximate location of property boundaries.



Document Path: P:\GIS\HW\Users\micklas\Digitalization\RCA\