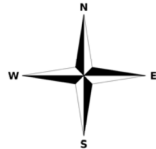
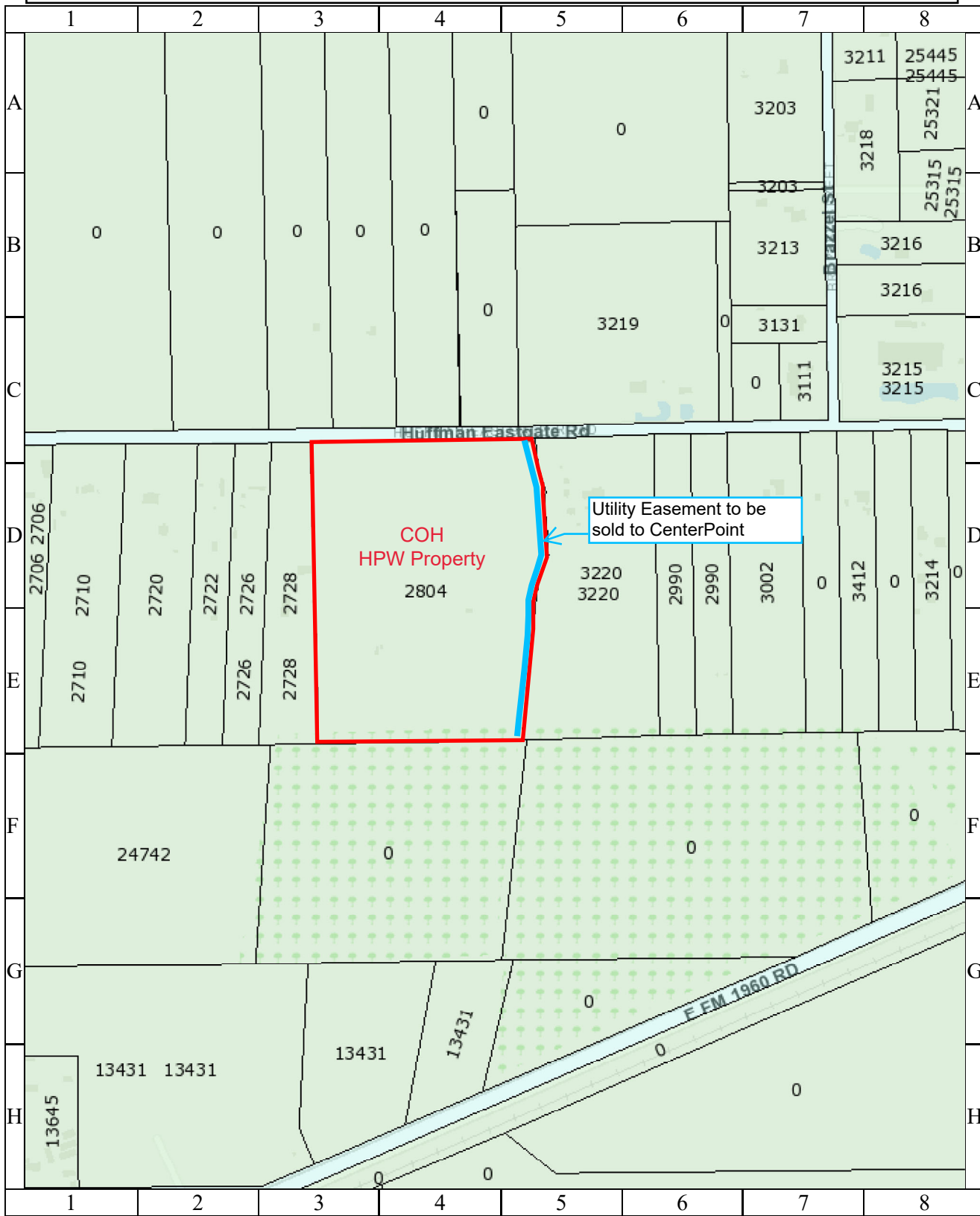


Parcel Map - Parcel SY20-030

Sale of a 10 foot-wide utility easement with its adjoining aerial easement, out of a portion of a 29.11 acre City fee-owned tract of land, located in TR 3B of the Cedar Bayou Wastewater Treatment Plant, out of the John Merry League Survey, Abstract 49.



1 inch = 202 feet

CITY OF HOUSTON
 Department of Public Works and Engineering
 Geographic Information & Management System (GIMS)



DISCLAIMER: THIS MAP REPRESENTS THE BEST INFORMATION AVAILABLE TO THE CITY.
 THE CITY DOES NOT WARRANT ITS ACCURACY OR COMPLETENESS.