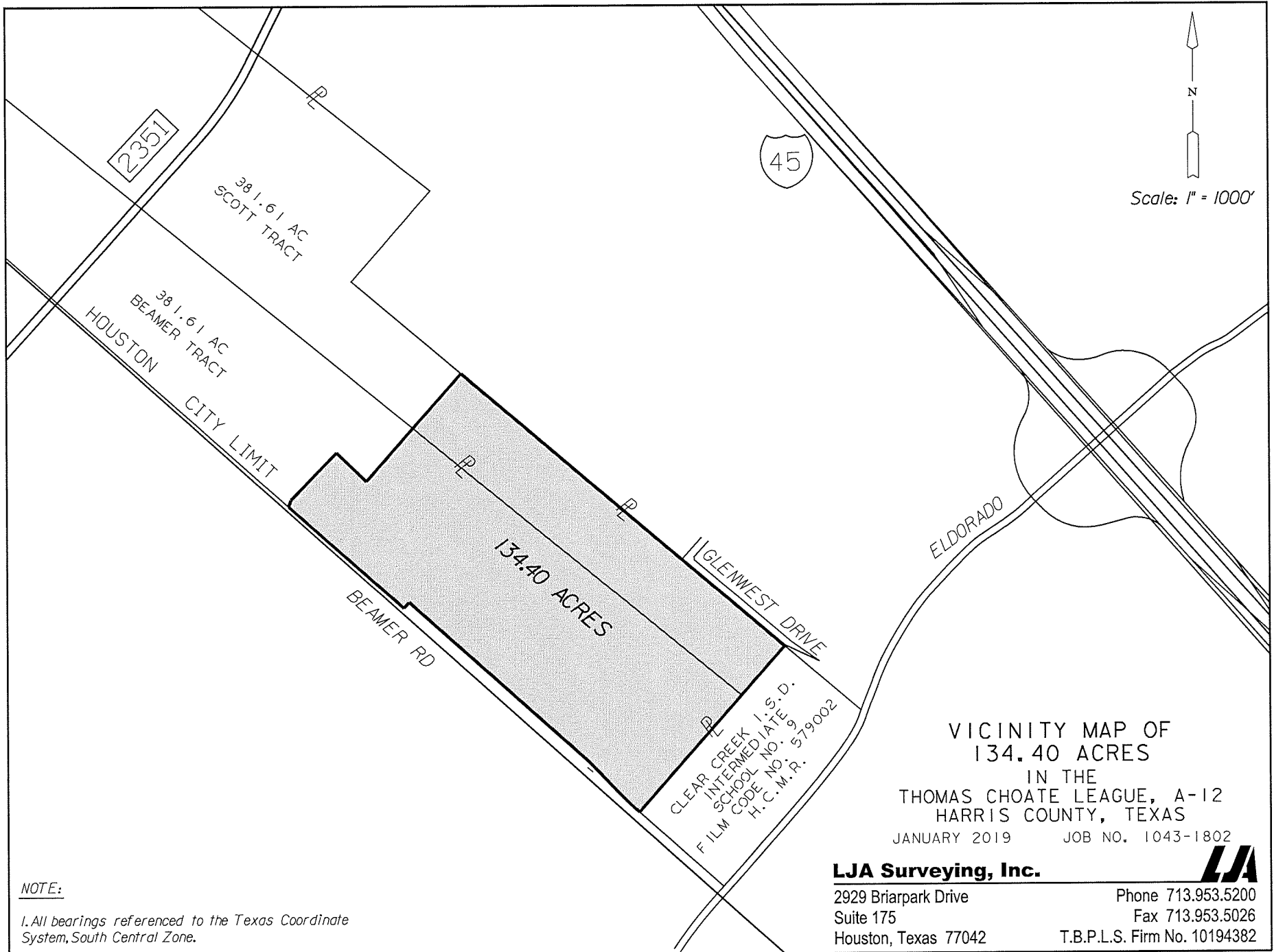


Exhibit A



HARRIS COUNTY M.U.D. 568







Approx. 134 ac.

UTILITY EXHIBIT

CITY OF HOUSTON

SEPTEMBER 2021

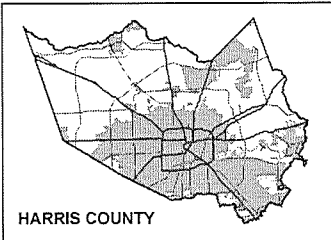
LEGEND

-  DISCOVERY TRACT
-  CITY AND ETJ LIMITS
-  SANITARY FORCE MAIN
-  SANITARY LINE
-  WATER LINE
-  STORM LINE

DATA SOURCE: UTILITY - CITY OF HOUSTON GIS, CITY OF HOUSTON LIMITS AND ETJ - CITY OF HOUSTON



0 250 500 1,000 Feet



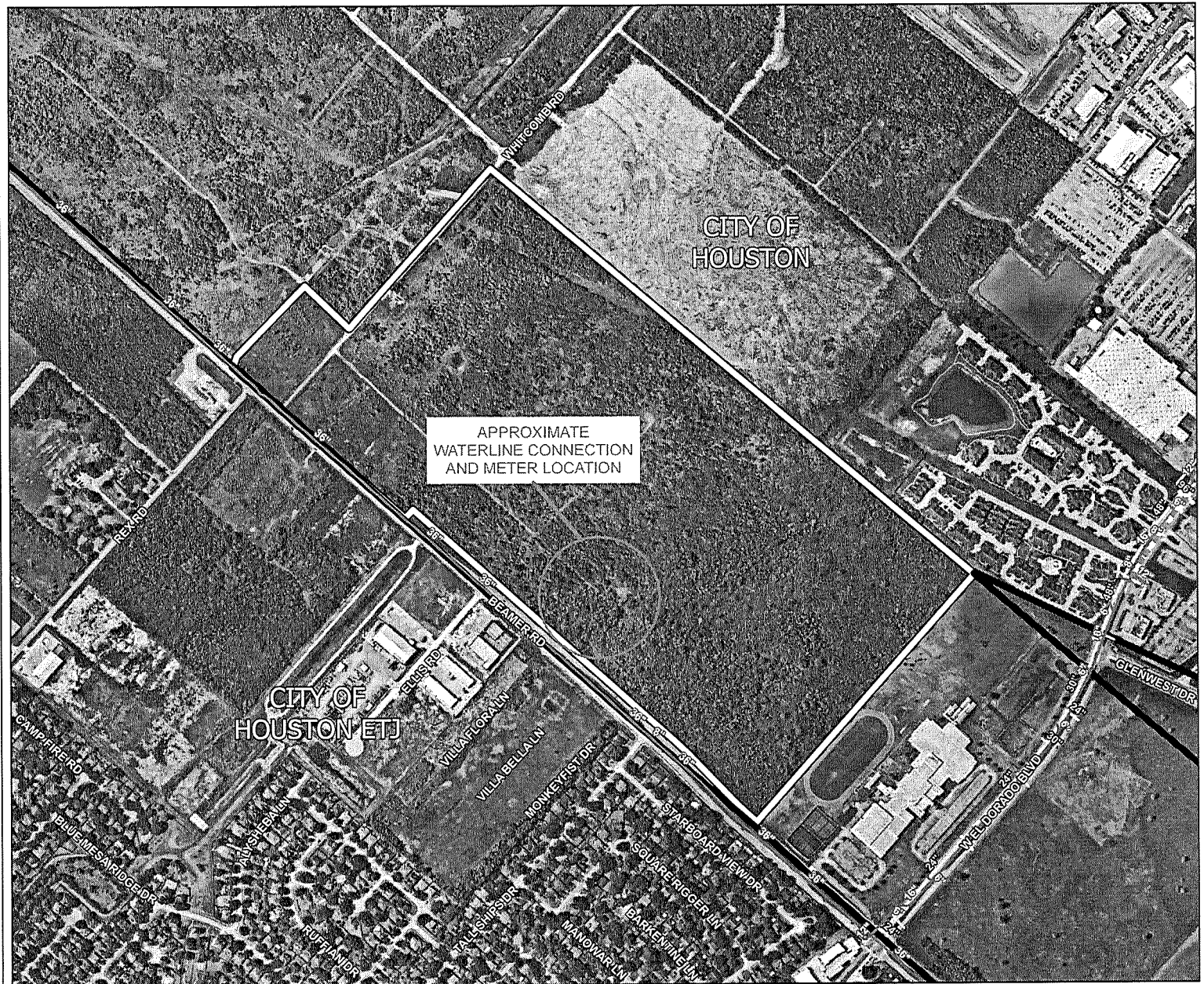
AERIAL PHOTOGRAPH DATE: NEARMAP 2021

THIS PRODUCT IS FOR INFORMATIONAL PURPOSES AND MAY NOT HAVE BEEN PREPARED FOR OR BE SUITABLE FOR LEGAL ENGINEERING, OR SURVEYING PURPOSES, IT DOES NOT REPRESENT AN ON-THE-GROUND SURVEY AND REPRESENTS ONLY THE APPROXIMATE RELATIVE LOCATION OF PROPERTY BOUNDARIES.



2900 W Sam Houston Parkway E, Suite 600
Houston, Texas 77062
Phone 713.953.5200 TDD P-1336
LJA.com

Exhibit B; page 1 of 2



HARRIS COUNTY M.U.D. 568







Approx. 134 ac.

UTILITY EXHIBIT

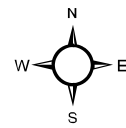
CITY OF HOUSTON

NOVEMBER 2021

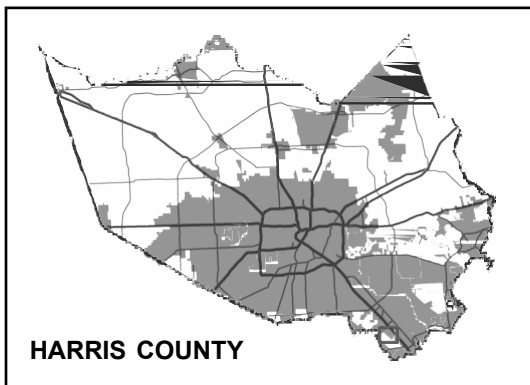
LEGEND

-  DISCOVERY TRACT
-  CITY AND ETJ LIMITS
-  SANITARY FORCE MAIN
-  SANITARY LINE
-  WATER LINE
-  STORM LINE

DATA SOURCE: UTILITY - CITY OF HOUSTON GIMS, CITY OF HOUSTON LIMITS AND ETJ - CITY OF HOUSTON



0 500 1,000 2,000 Feet

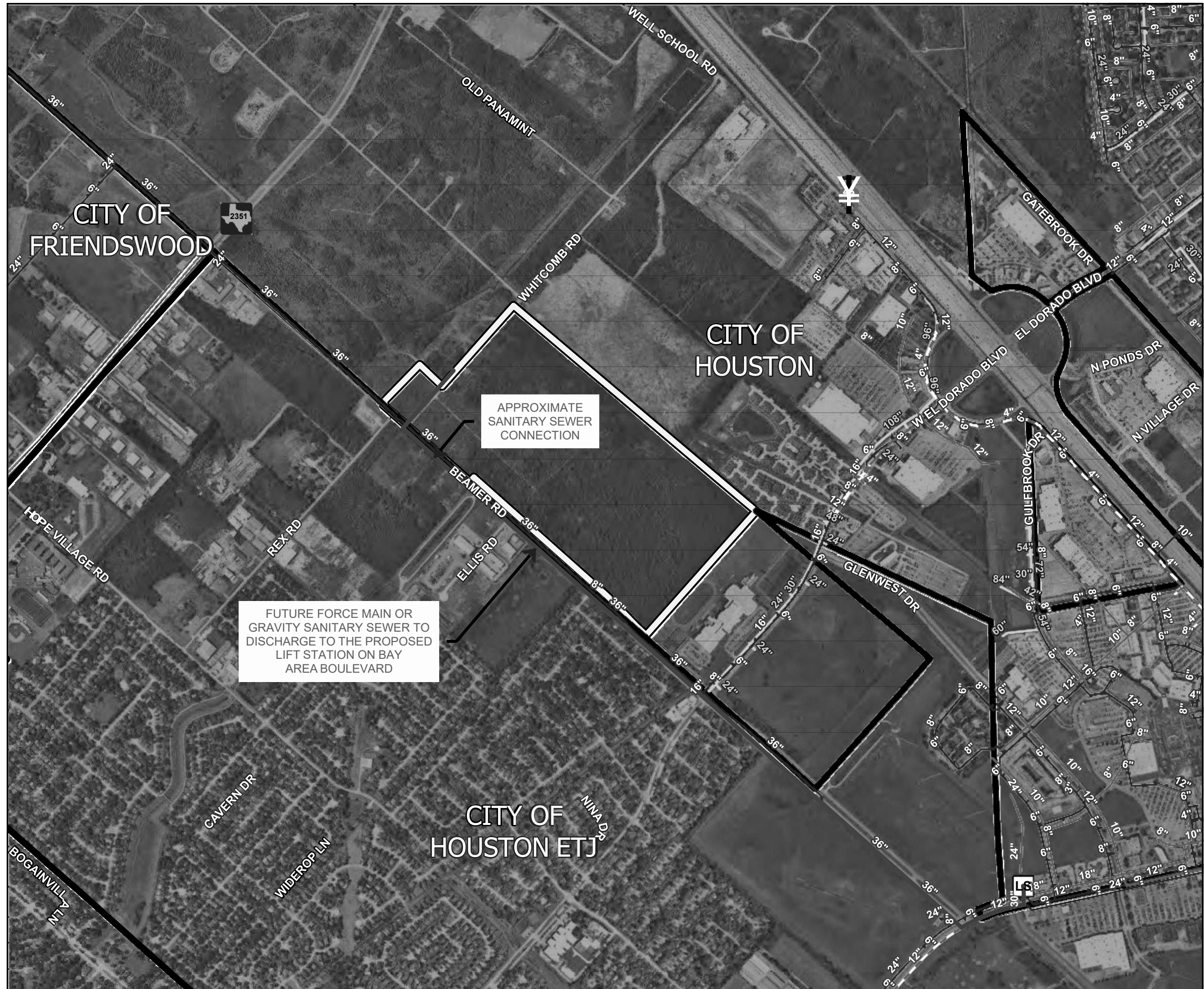


AERIAL PHOTOGRAPH DATE: NEARMAP 2021

THIS PRODUCT IS FOR INFORMATIONAL PURPOSES AND MAY NOT HAVE BEEN PREPARED FOR OR BE SUITABLE FOR LEGAL, ENGINEERING, OR SURVEYING PURPOSES. IT DOES NOT REPRESENT AN ON-THE-GROUND SURVEY AND REPRESENTS ONLY THE APPROXIMATE RELATIVE LOCATION OF PROPERTY BOUNDARIES.

LJA ENGINEERING
 3600 W Sam Houston Parkway S, Suite 600
 Houston, Texas 77042
 Phone 713.953.5200 TBP# F-1386
 LJA.com

Exhibit B, page 2 of 2



Path: T:\0004\Exhibits\HA68a\roll\HA68a.aprx