

**SHELDON ROAD MUNICIPAL UTILITY DISTRICT:**  
 CURRENT DISTRICT ACREAGE: 434.6135  
 TOTAL PROPOSED ACREAGE: 229.7972  
 TOTAL EXISTING + PROPOSED ACREAGE: 664.4107

Proposed Tract  
 UTLX Manufacturing, LLC  
 23.4036 Acres

Proposed Tract  
 Transco Railway Products, Inc.  
 206.3936 Acres



- ▭ Proposed Annexation Parcels
- Parcels
- District Boundaries



# SHELDON ROAD MUD

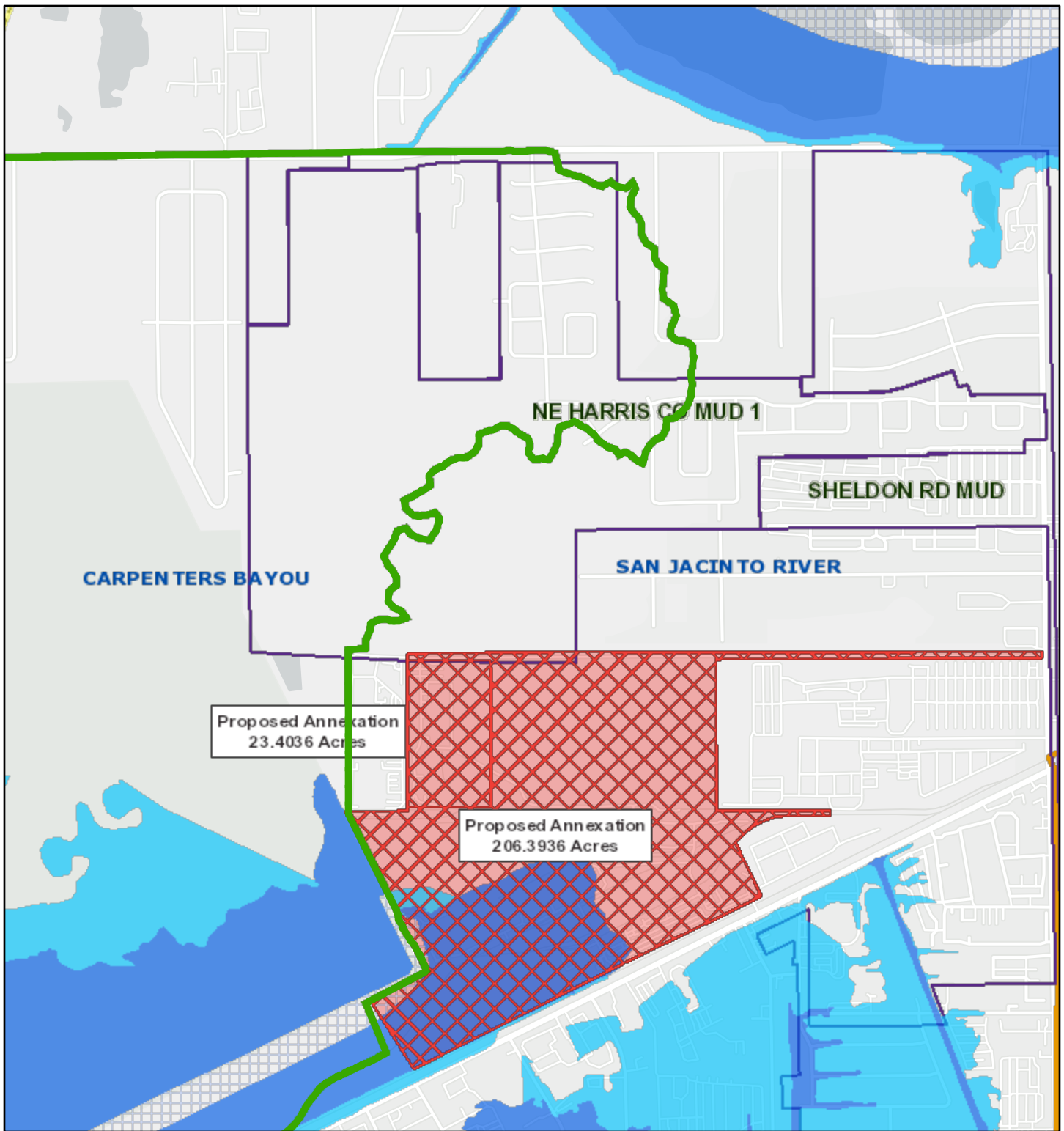
9419 LAMKIN  
 HOUSTON TX 77049  
 (281) 456-9825



0 800 Feet












# Sheldon Road Municipal Utility District (229.7972 acres)



9/2/2021, 3:20:25 PM

1:18,056

-  Watersheds
-  Texas Senate Districts
-  Texas House Districts
-  100 Year Floodplain
-  500 Year Floodplain
-  Floodway
-  City Limits
-  Council Districts
-  Existing Acreage of District

