

VICINITY MAP

LEGEND

- HGAC Roads
- COUNCIL DISTRICT A, AMY PECK
- COUNCIL DISTRICT B, JERRY DAVIS
- COUNCIL DISTRICT C, ABBIE KAMIN
- COUNCIL DISTRICT D, CAROLYN EVANS-SHABAZZ
- COUNCIL DISTRICT E, DAVID MARTIN
- COUNCIL DISTRICT F, TIFFANY D. THOMAS
- COUNCIL DISTRICT G, GREG TRAVIS
- COUNCIL DISTRICT H, KARLA CISNEROS
- COUNCIL DISTRICT I, ROBERT GALLEGOS
- COUNCIL DISTRICT J, EDWARD POLLARD
- COUNCIL DISTRICT K, MARTHA CASTEX-TATUM

48-INCH WATER LINE FROM SH 288 TO CULLEN BOULEVARD ALONG E OREM DRIVE WBS No. S-000900-0173-3

COUNCIL DISTRICT MAP

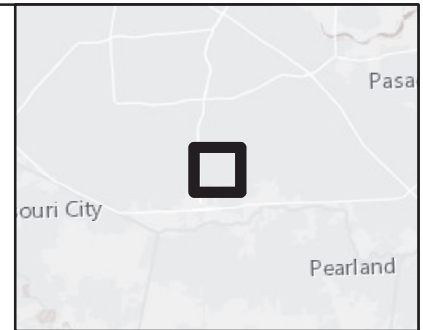
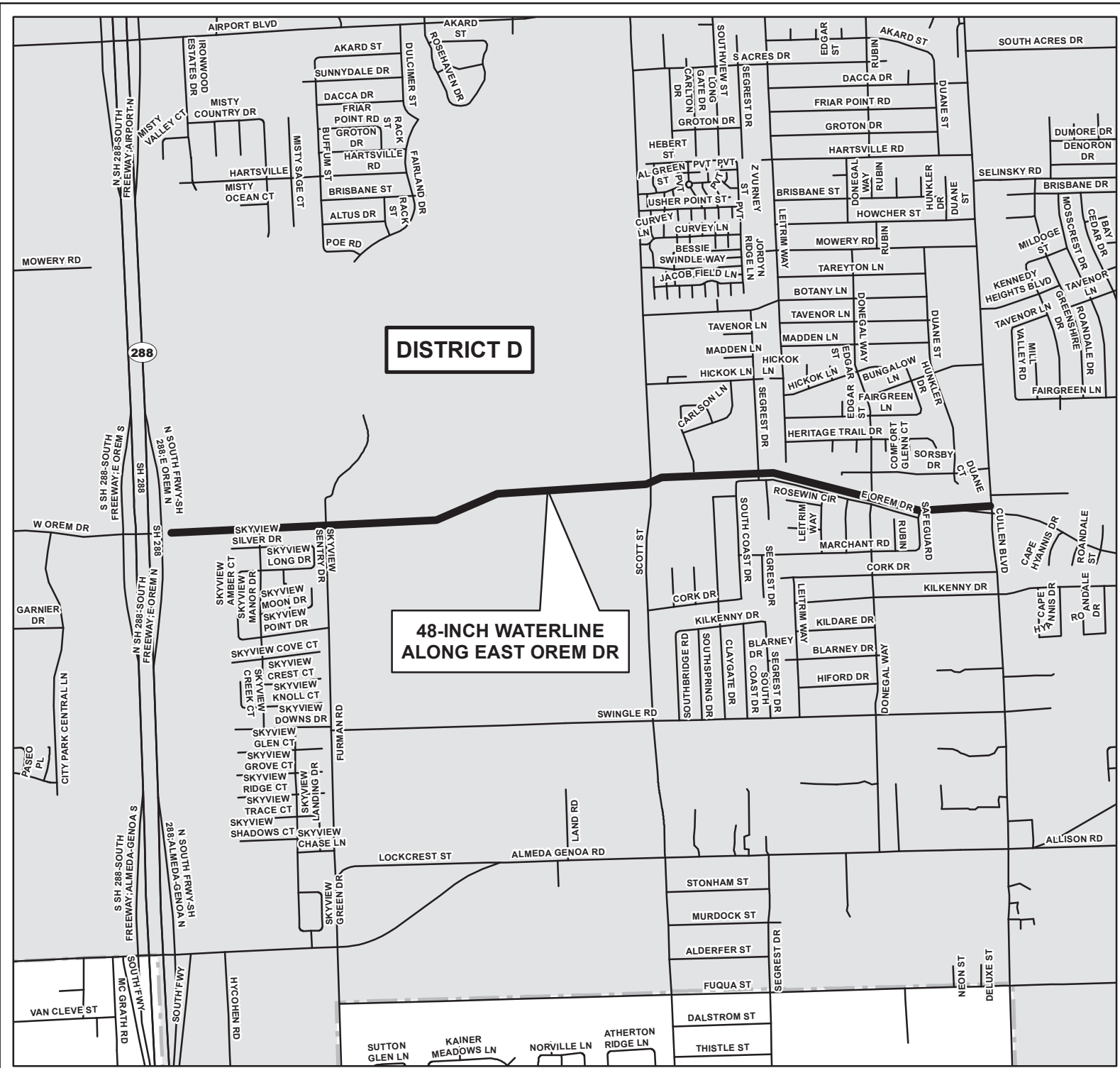
HARRIS COUNTY, TEXAS



1 inch equals 36,960 feet

Disclaimer: This product is offered for informational purposes and may not have been prepared for or be suitable for legal, engineering, or surveying purposes. It does not represent an on-the-ground survey and represents only the approximate relative location of property, governmental and/or political boundaries or related facilities to said boundary. No express warranties are made by Jones & Carter, Inc. concerning the accuracy, completeness, reliability, or usability of the information included within this exhibit.





VICINITY MAP
1 INCH = 10 MILES

- LEGEND**
- Proposed Waterline
 - HGAC Roads
 - City Council District D

48-INCH WATER LINE FROM
SH 288 TO CULLEN BOULEVARD
ALONG E OREM DRIVE WBS No.
S-000900-0173-3

PROJECT VICINITY MAP

HARRIS COUNTY, TEXAS



1 inch equals 1,600 feet

Disclaimer: This product is offered for informational purposes and may not have been prepared for or be suitable for legal, engineering, or surveying purposes. It does not represent an on-the-ground survey and represents only the approximate relative location of property, governmental and/or political boundaries or related facilities to said boundary. No express warranties are made by Jones & Carter, Inc. concerning the accuracy, completeness, reliability, or usability of the information included within this exhibit.

