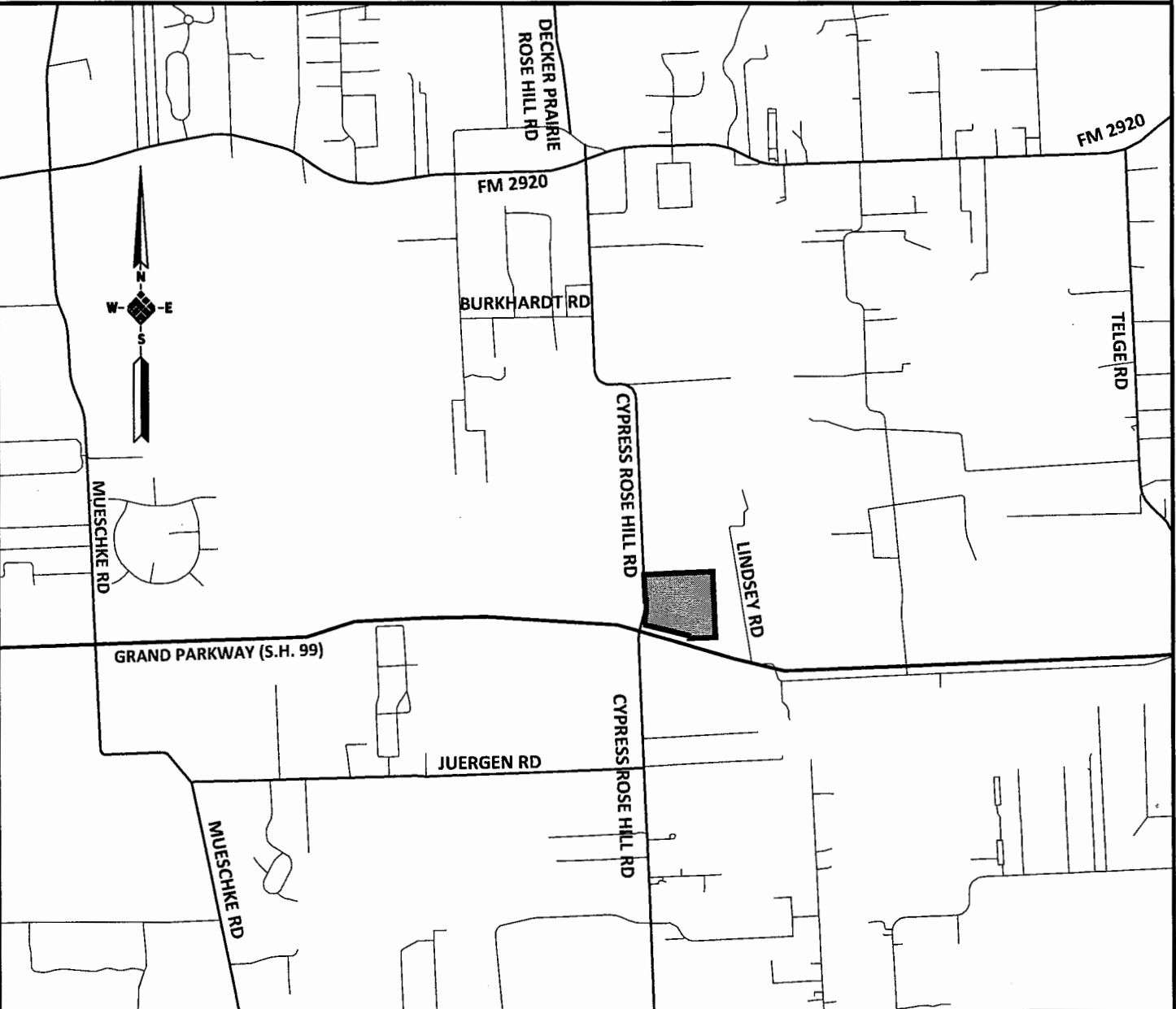


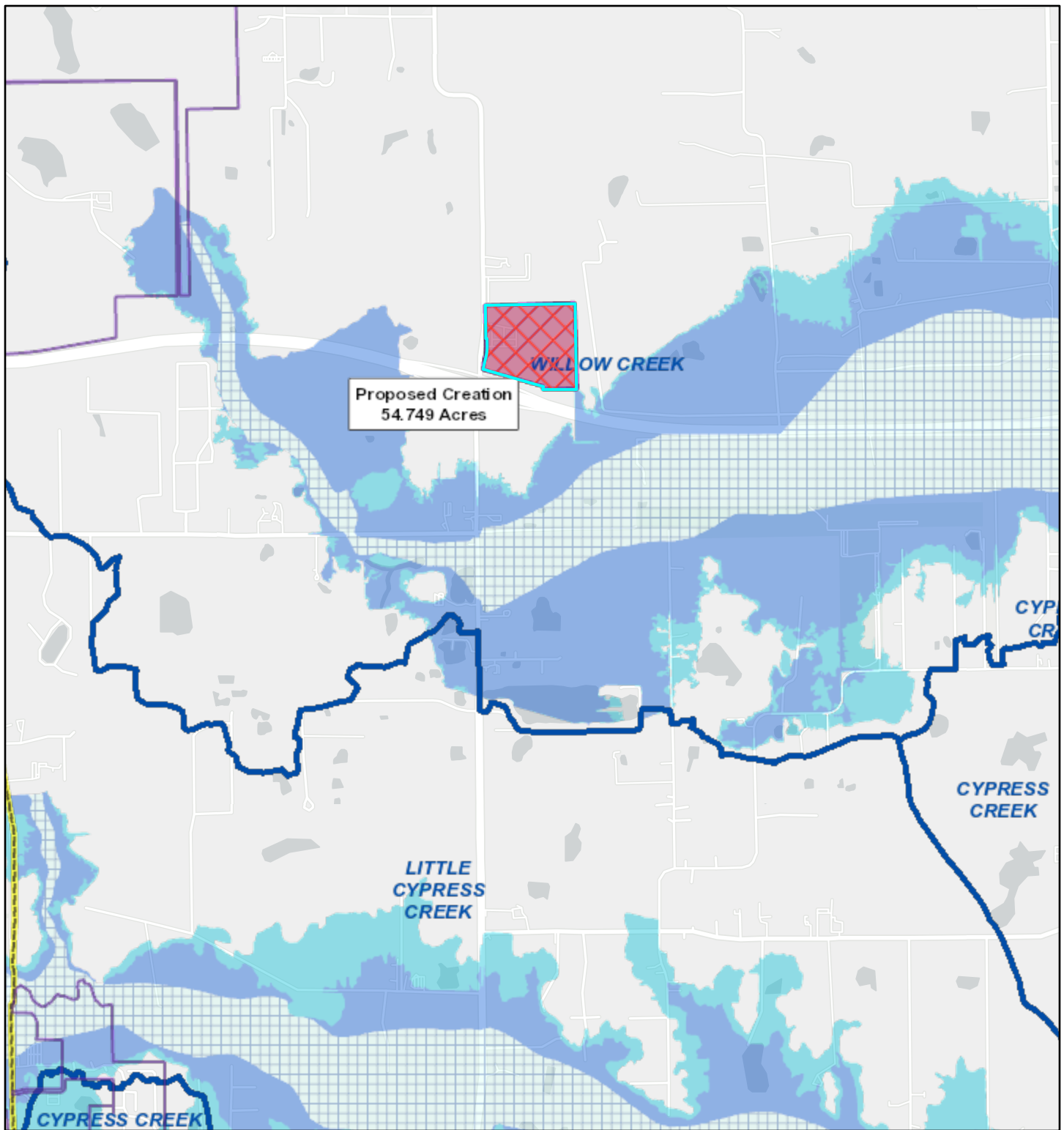
HARRIS COUNTY MUNICIPAL DISTRICT NO. 572
WILLIAM HURD SURVEY, A-376 AND F. BENIGNUS SURVEY, A-1463
54.749 ACRES - KEY MAP #287 W

\\fs3\Projects\2500\233000100_HC_WUD_572_GC\Boundary Maps, Descriptions, and Aerial Maps\HCMUD 572 Boundary Map Creation\Vicinity Map.dwg [MUD Bdy] Plotted Mar 02, 2020 at 1:44pm by rfuseller (Last Saved by: rfuseller)












VICINITY MAP
NTS

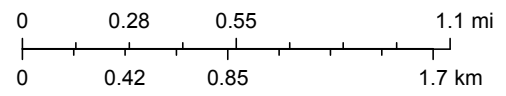
Harris County Municipal Utility District No. 572 (54.749 acres)



7/17/2020, 1:43:17 PM

1:36,112

- | | | | |
|--|---------------------|---|------------------------------|
|  | 100 Year Floodplain |  | Council Districts |
|  | 500 Year Floodplain |  | Existing Acreage of District |
|  | Floodway |  | Proposed Annexation |
|  | City Limits |  | COH Wastewater Line |
| | |  | COH Water Line |



HCFC and HCED,